

Community Planning Forum

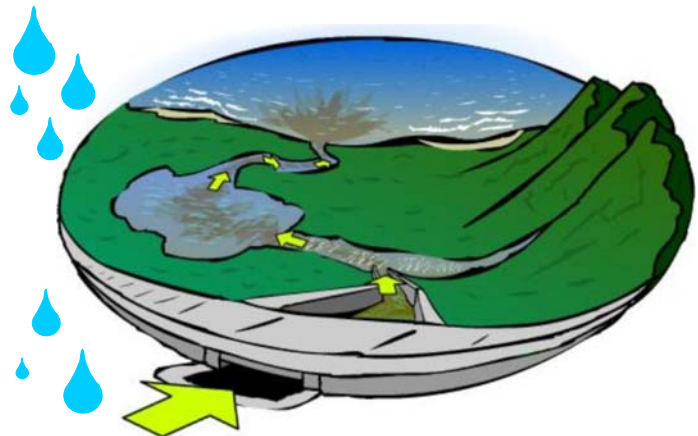
STONINGTON
Department of Planning



STORMWATER

DATE: **Wednesday February 22, 2006**
LOCATION: **Pine Point School Library/Technology Center**
89 Barnes Road, Stonington, Connecticut 06378
TIME: **7:00 p.m.**

Join the *Stonington Stormwater Task Force* for a demonstration of the *Enviroscape Model*, a short presentation on the *Stormwater Utility Study* findings, and an explanation on why stormwater is an important topic.



According to the U.S. Environmental Protection Agency (EPA) and supporting research, pollutants that are washed off roads and highways and other impervious surfaces by rain and snow melt, known as *storm water runoff*, may impair the quality of our water resource. These resources are used for drinking water and recreation and provide habitat to a variety of plants and animals. To find out more information about stormwater impacts, check out the EPA website at:

<http://www.epa.gov/ebtpages/watestormwater.html>

For directions to Pine Point School, check out the Google Maps website:
<http://maps.google.com/maps?q=89+Barnes+Road,+Stonington,+CT+06378&iwloc=A&hl=en>

This event is sponsored by the Stonington Department of Planning and Pine Point School
<http://www.pinepoint.org> with contributions from the Stonington Stormwater Task Force



STONINGTON
ten
Striving to become a 'Top 10' community in the country.