

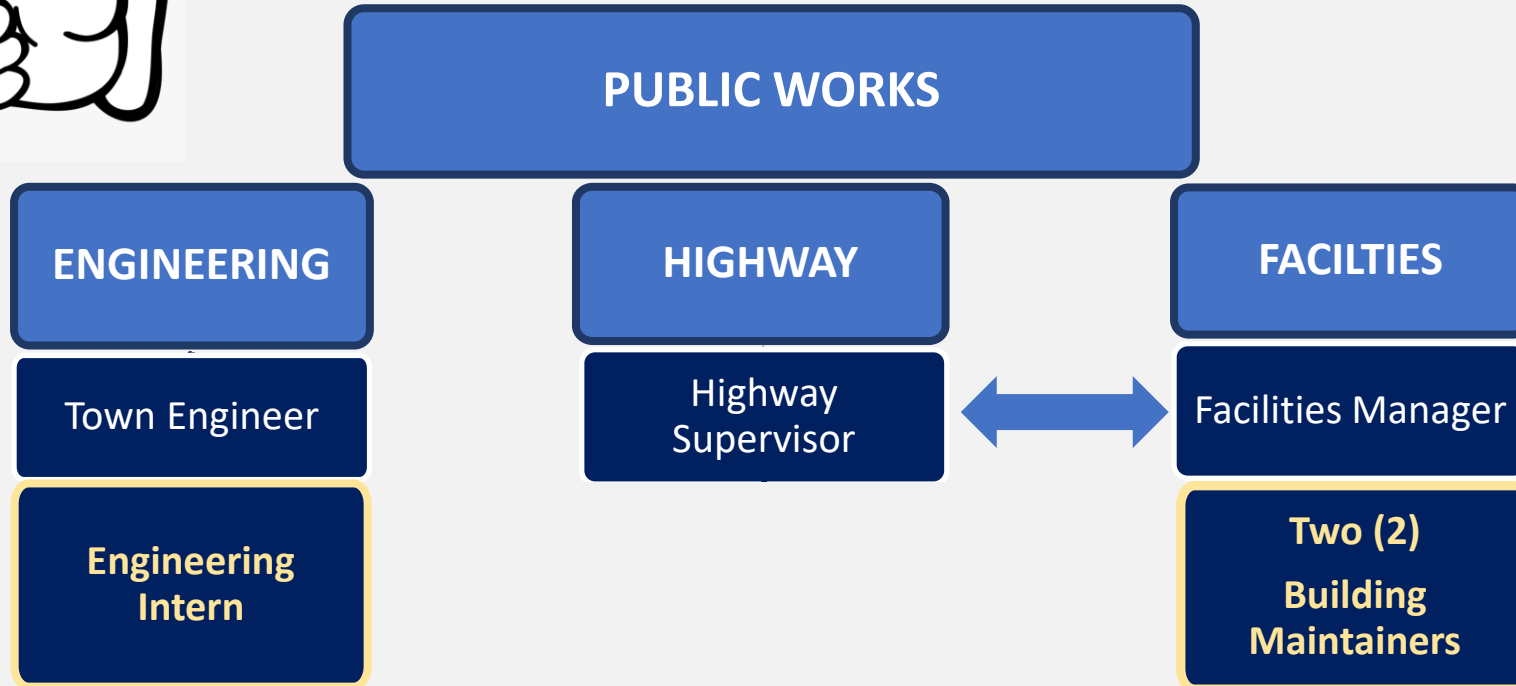


DEPARTMENT OF PUBLIC WORKS 2020 REPORT

Stonington

Department of Public Works

ABOUT US



HIGHWAY

Primary Services

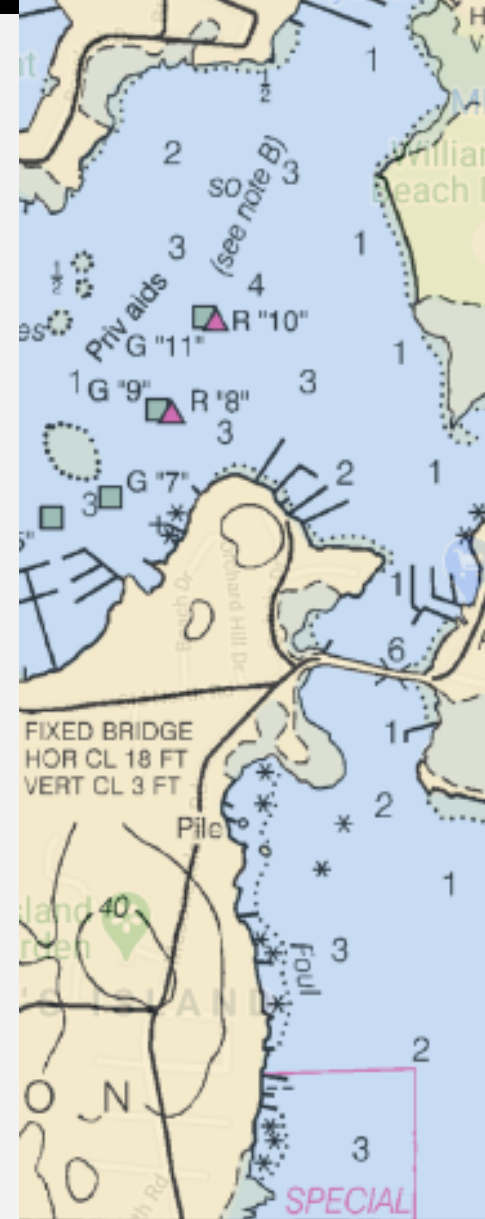
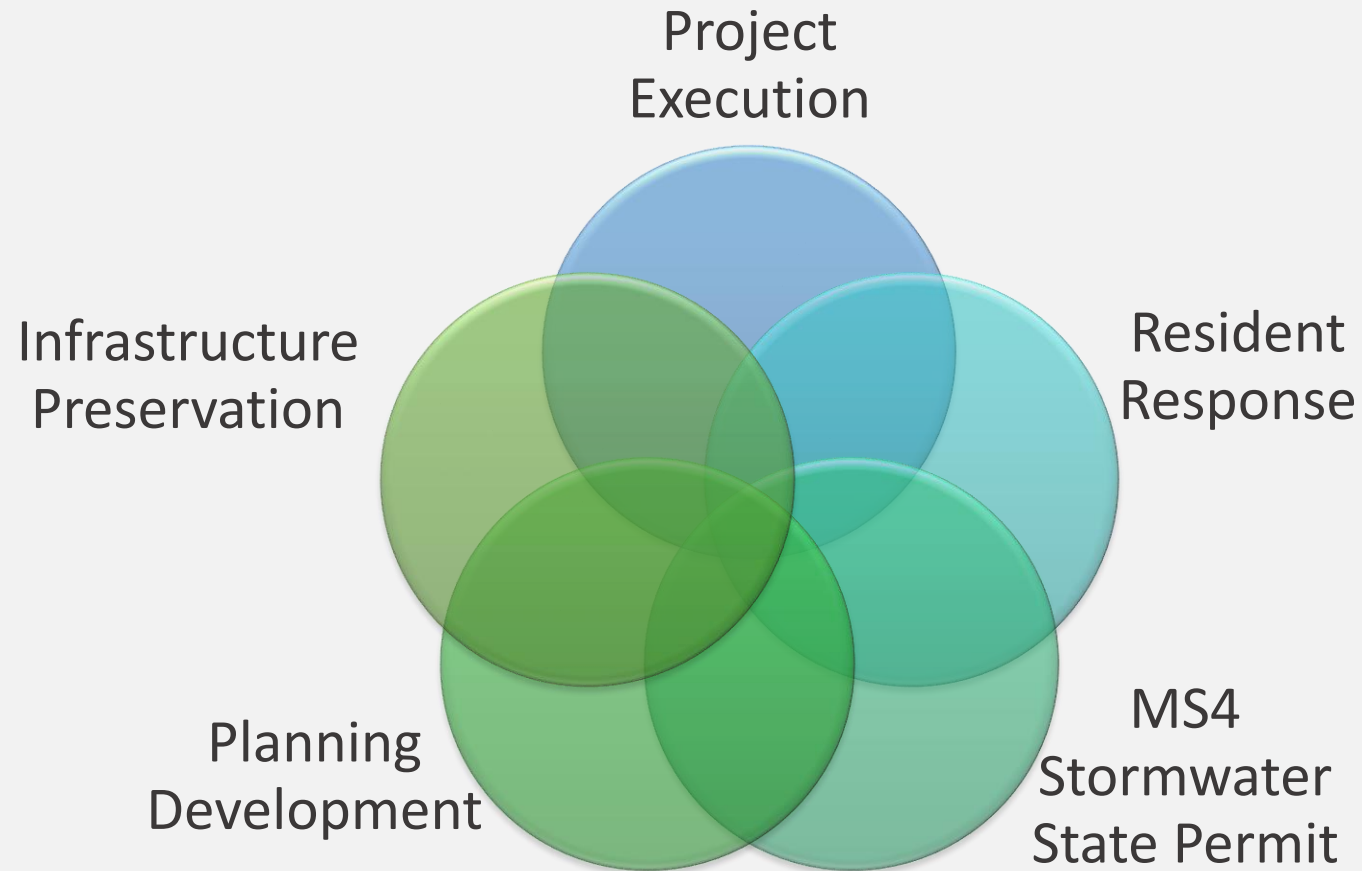


Stonington

Department of Public Works

ENGINEERING

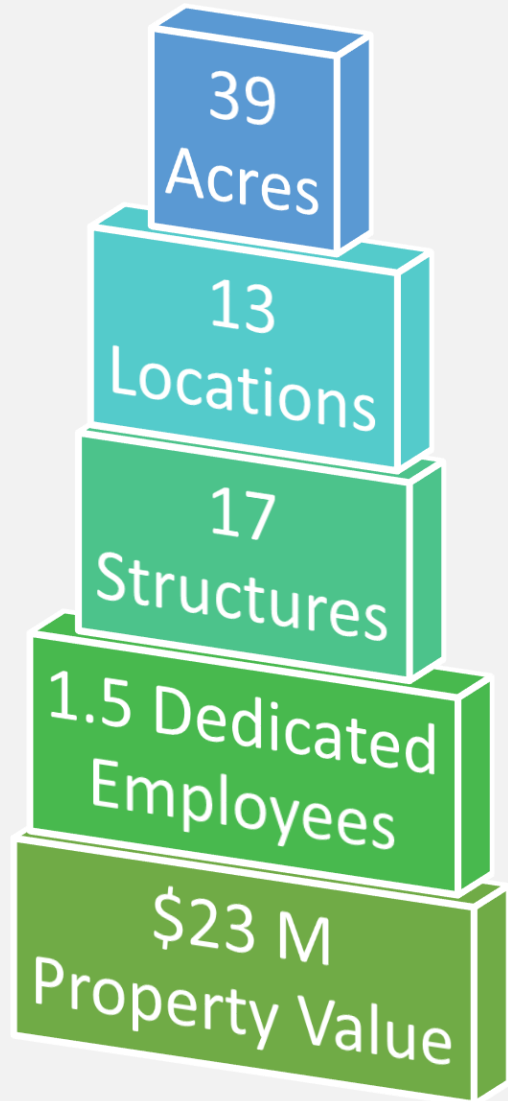
Primary Services



Stonington

Department of Public Works

FACILITIES



Facilities Maintained:

1. *Town Hall*
 2. *Human Services Building*
 3. *Mystic River Boathouse Park Structures*
 4. *Highway Facilities: Four (4) Structures*
 5. *Pawcatuck Neighborhood Center and Senior Center*
 6. *Fourth District Voting Hall*
 7. *Town Dock (Pier Structure, Parking Lot, Green Space)*
 8. *West Broad Street School/St Michael School*
 9. *Former Old Mystic Administration Building*
 10. *Mystic Boathouse Park: Two (2) Structures*
 11. *Pawcatuck Dike Facility (Pump House & Barrier)*
 12. *Two (2) Picnic Grounds (East and West Pavilions)*
 13. *Five (5) Parks & Playgrounds*
Old Mystic Playground,
Borough Playground,
Spellman Playground,
Donahue Park and Boat Ramp,
Veterans Memorial)
1. *Street Lighting Maintenance*



OUR TOP GOALS

- General Town Wide Instructure Improvements
- Regulatory Compliance Facility Environmental Improvements
- Optimize Asset Management Efforts to include resource monitoring, fleet management and condition assessments
 - Benchmarking Performance
 - Proactive vs Reactive
 - Increase Efficiency



OUR TOP CHALLENGES

- Increases to core functions and services throughout the entire Department.
- Prioritization and funding of repair or replacement of inadequate facilities, failing infrastructure and aged equipment.
- Maintaining best levels of service to our residents.



Stonington

Department of Public Works

Surface Sanitation

DATE:

SIGNATURE

BUILDING: TOWN HALL

LOCATION	Frequency/Day	7AM
Office Door Knobs (both sides)	4	
Exterior Building doors knobs & doors (both sides)	4	
Elevator Controls and Walls		
Exterior Call Buttons	4	
Interior Buttons	4	
Counter Surfaces		
Tax Office	1	
Town Clerk	1	
Break Room	2	
Planning and Zoning	1	
Building Official	1	
Finance	1	
Public Tables		
Main Hallway	1	
Break Room	2	
Meeting Room	1	
Hallways & Stairs		
Handrails	2	
Trim	2	
Walls	1	
Drop Box (outside)	4	
Bathrooms		
Toilet Surfaces	2	
Stall Doors & Walls	2	
Doors (2)	2	
Soap Dispenser	2	
Towel Dispenser	2	
Sink and Faucets	2	
Window sills and window glass	1	
Floors (Per discussions with the school complete as follows: mop on disinfecting cleaner, replace water in bucket with clean water, dry mop up the cleaners to ensure entire surface is disinfected)	1	
Break Room		
Floors (Per discussions with the school complete as follows: mop on disinfecting cleaner, replace water in bucket with clean water, dry mop up the cleaners to ensure entire surface is disinfected)	2/weekly	



The image shows a spiral-bound notebook with a grey cover. The cover features a large photograph of a lush green field with a large, multi-story building in the background. The Tom Irwin, Inc. logo is prominently displayed at the top of the photo. At the bottom of the photo, contact information is provided. The notebook is placed on a grassy area, with a real-world landscape of a golf course and a road visible in the background.

Tom Irwin^{INC.}

Tom Irwin, Inc. | 13 A Street, Burlington, MA 01803 | 800-582-5959 | tomirwin.com



