

Appendix B

Mystic Area Manhole Inspection Reports and Photos

This page intentionally left blank.



Manhole Inspection Form

Manhole Information

Inspector: BH AND TT

Date: 4/28/2022

Weather: DRY (NO PRECIPITATION DURING SURVEY)

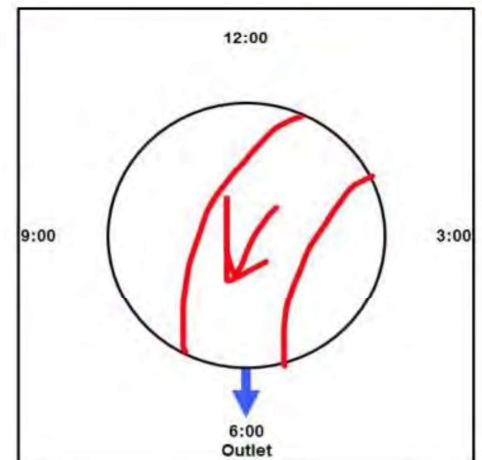
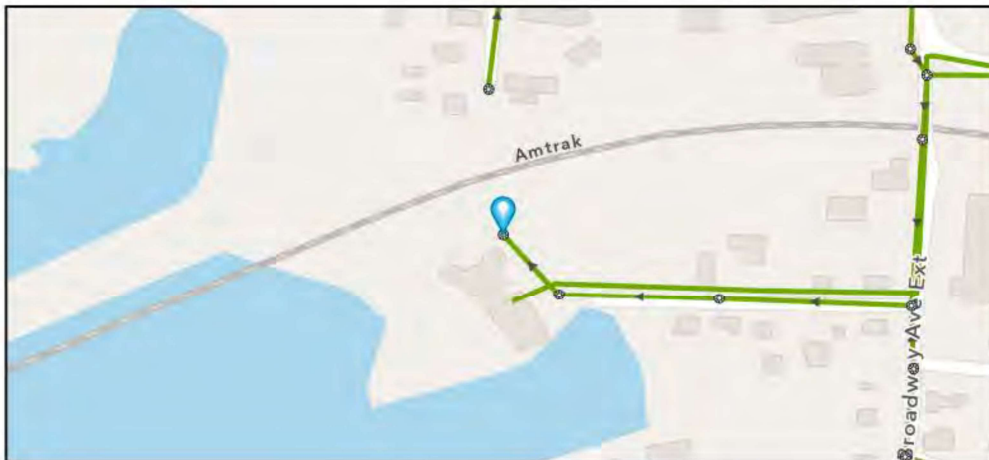
Street: EDMONT

GIS MH No: 1-0

Type of Manhole: SANITARY SEWER (GRAVITY)

Inspection Status: SURFACE INSPECTION: LEVEL 1 (NO MANHOLE ENTRY)

Manhole Location and Configuration



Inspection Photos



**Manhole Inspection Form****Manhole Information****Inspector:** BH AND TT**Date:** 4/28/2022**Weather:** DRY (NO PRECIPITATION DURING SURVEY)**Street:** EDGEMONT**Location:** PARKING LOT**GIS MH No:** 1-0**Type of Manhole:** SANITARY SEWER (GRAVITY)**Inspection Status:** SURFACE INSPECTION: LEVEL 1 (NO MANHOLE ENTRY)**Rim to Invert (ft):** 15.75**Grade to Rim (in):** 0**Manhole Infiltration****Surcharge:** NO**Infiltration:** NO**Number of Holes:** 4**Metal Riser:** NO**Manhole Characteristics**

Location in MH	Mtrl. Code	Infil. Code	Cond. Code	Repair Codes	Comments
Frame/Cover	CAST IRON	NONE	CORRODED	REPLACE FRAME AND COVER	
Chimney	CONCRETE (PRECAST)	NONE	SOUND	NONE	
Cone	CONCRETE (PRECAST)	NONE	SOUND	NONE	
Wall	CONCRETE (PRECAST)	NONE	SOUND	NONE	
Bench	BRICK	NONE	SOUND	NONE	
Invert/Channel	BRICK	NONE	SOUND	NONE	

Invert Information

Pipe	Direction	Rim to Invert	Pipe Dia. (in)	Pipe Mtrl. Code	Clock Position*	Comments
Pipe 1	OUT	15.75	30	REINFORCED CONCRETE PIPE	06:00	
Pipe 2	IN	15.75	30	REINFORCED CONCRETE PIPE	02:00	
Pipe 3						
Pipe 4						
Pipe 5						

**Additional
Comments**



Manhole Inspection Form

Manhole Information

Inspector: BH AND TT

Date: 4/28/2022

Weather: DRY (NO PRECIPITATION DURING SURVEY)

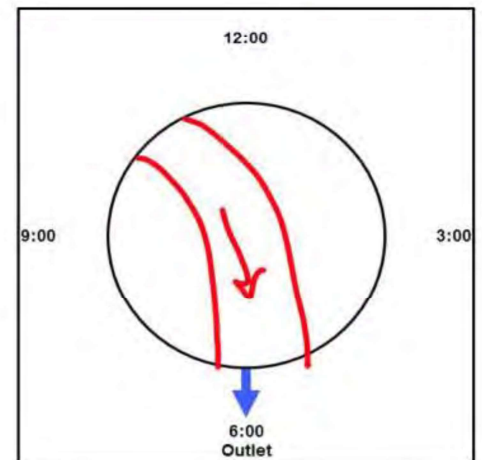
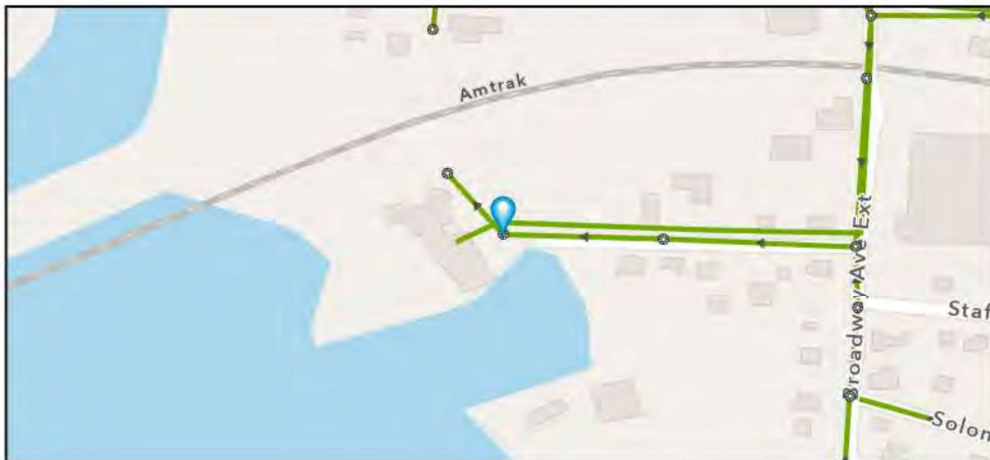
Street: EDMONT

GIS MH No: 1-1

Type of Manhole: SANITARY SEWER (GRAVITY)

Inspection Status: SURFACE INSPECTION: LEVEL 1 (NO MANHOLE ENTRY)

Manhole Location and Configuration



Inspection Photos



**Manhole Inspection Form****Manhole Information****Inspector:** BH AND TT**Date:** 4/28/2022**Weather:** DRY (NO PRECIPITATION DURING SURVEY)**GIS MH No:** 1-1**Type of Manhole:** SANITARY SEWER (GRAVITY)**Inspection Status:** SURFACE INSPECTION: LEVEL 1 (NO MANHOLE ENTRY)**Street:** EDGEMONT**Rim to Invert (ft):** 15**Location:** PARKING LOT**Grade to Rim (in):** 0**Manhole Infiltration****Surcharge:** YES**Number of Holes:** 4**Infiltration:** NO**Metal Riser:** NO**Manhole Characteristics**

Location in MH	Mtrl. Code	Infil. Code	Cond. Code	Repair Codes	Comments
Frame/Cover	CAST IRON	NONE	CORRODED	REPLACE FRAME AND COVER	
Chimney	CONCRETE BLOCK	NONE	SOUND	NONE	
Cone	CONCRETE (PRECAST)	NONE	SOUND	NONE	
Wall	CONCRETE (PRECAST)	NONE	SOUND	NONE	
Bench	BRICK	NONE	SOUND	NONE	
Invert/Channel	BRICK	NONE	SOUND	NONE	

Invert Information

Pipe	Direction	Rim to Invert	Pipe Dia. (in)	Pipe Mtrl. Code	Clock Position*	Comments
Pipe 1	OUT	15	30	REINFORCED CONCRETE PIPE	06:00	
Pipe 2	IN	15	30	REINFORCED CONCRETE PIPE	11:00	
Pipe 3						
Pipe 4						
Pipe 5						

**Additional
Comments**



CDM
Smith

Town of Stonington, Connecticut

Manhole Inspection Form

Manhole Information

Inspector: BH AND TT

Date: 4/28/2022

Weather: DRY (NO PRECIPITATION DURING SURVEY)

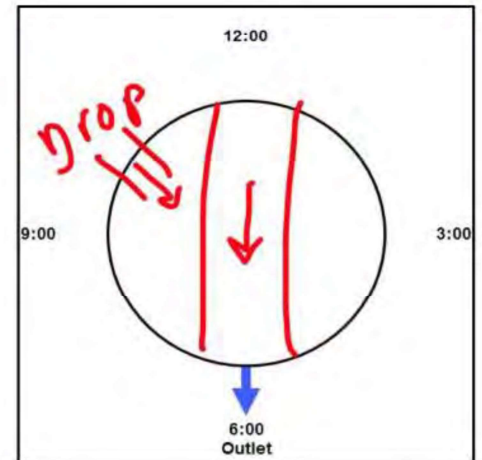
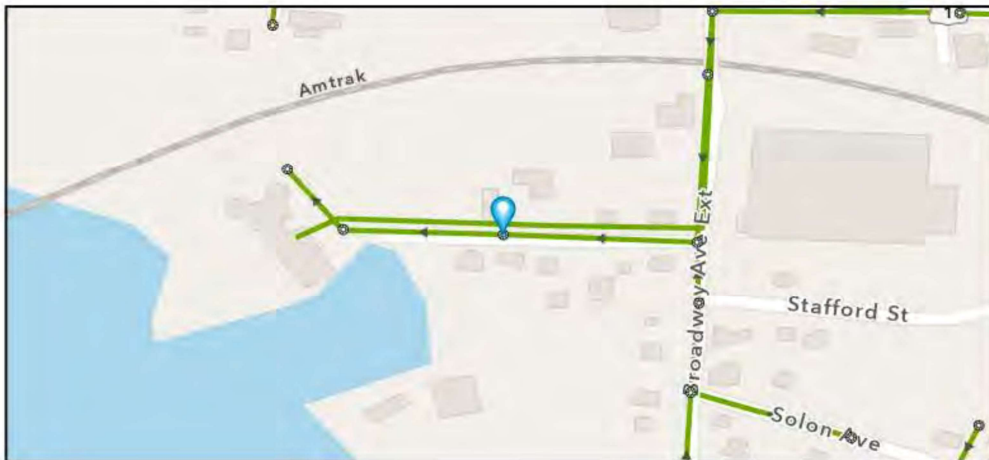
Street: EDMONT

GIS MH No: 1-2

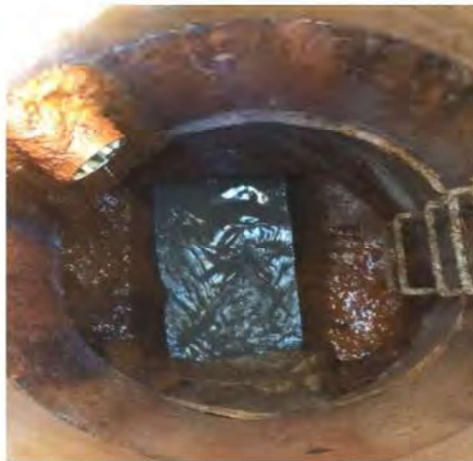
Type of Manhole: SANITARY SEWER (GRAVITY)

Inspection Status: SURFACE INSPECTION: LEVEL 1 (NO MANHOLE ENTRY)

Manhole Location and Configuration



Inspection Photos



**Manhole Inspection Form****Manhole Information****Inspector:** BH AND TT**Date:** 4/28/2022**Weather:** DRY (NO PRECIPITATION DURING SURVEY)**Street:** EDGEMONT**Location:** PARKING LOT**GIS MH No:** 1-2**Type of Manhole:** SANITARY SEWER (GRAVITY)**Inspection Status:** SURFACE INSPECTION: LEVEL 1 (NO MANHOLE ENTRY)**Rim to Invert (ft):** 14**Grade to Rim (in):** 0**Manhole Infiltration****Surcharge:** NO**Infiltration:** YES**Number of Holes:** 4**Metal Riser:** NO**Manhole Characteristics**

Location in MH	Mtrl. Code	Infil. Code	Cond. Code	Repair Codes	Comments
Frame/Cover	CAST IRON	NONE	CORRODED	REPLACE FRAME AND COVER	
Chimney	OTHER (DESCRIBE IN DETAILS)	NONE	NOT KNOWN	NONE	NO CHIMNEY
Cone	OTHER (DESCRIBE IN DETAILS)	NONE	SOUND	NONE	NO CHIMNEY
Wall	CONCRETE (PRECAST)	WEEPER	SOUND	LINE_MANHOLE	
Bench	BRICK	NONE	SOUND	NONE	
Invert/Channel	BRICK	NONE	SOUND	NONE	

Invert Information

Pipe	Direction	Rim to Invert	Pipe Dia. (in)	Pipe Mtrl. Code	Clock Position*	Comments
Pipe 1	OUT	14	30	REINFORCED CONCRETE PIPE	06:00	
Pipe 2	IN	5.75	6	POLY VINYL CHLORIDE	01:00	
Pipe 3	IN	14	30	REINFORCED CONCRETE PIPE	12:00	
Pipe 4						
Pipe 5						

Additional Comments 5.75 TO DROP



CDM
Smith

Town of Stonington, Connecticut

Manhole Inspection Form

Manhole Information

Inspector: BH AND TT

Date: 4/28/2022

Weather: DRY (NO PRECIPITATION DURING SURVEY)

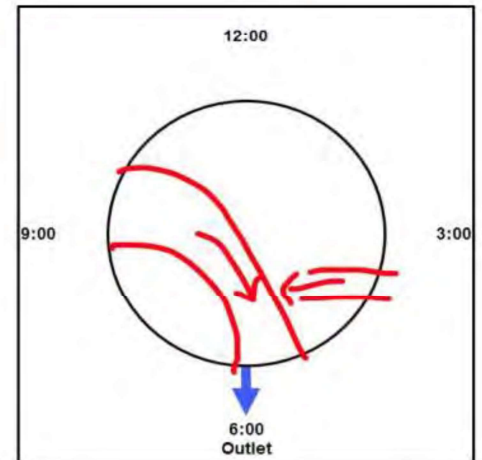
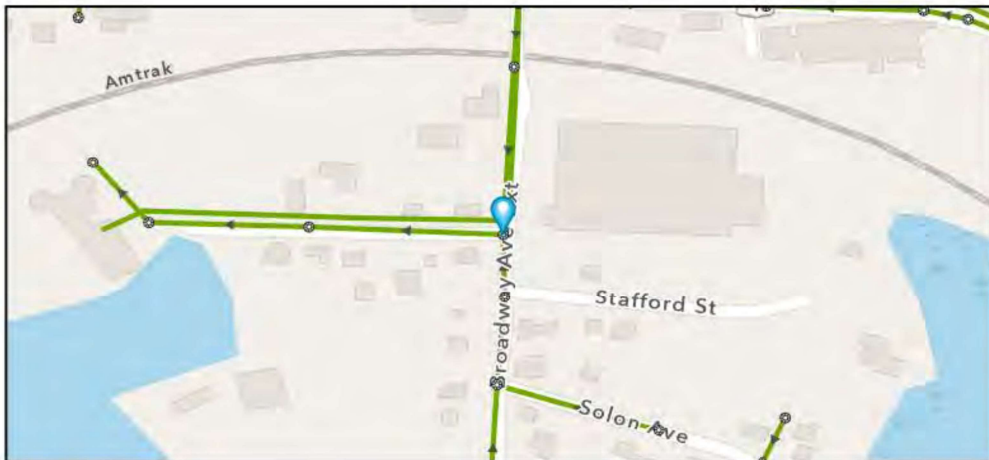
Street: BROADWAT EXT

GIS MH No: 1-3

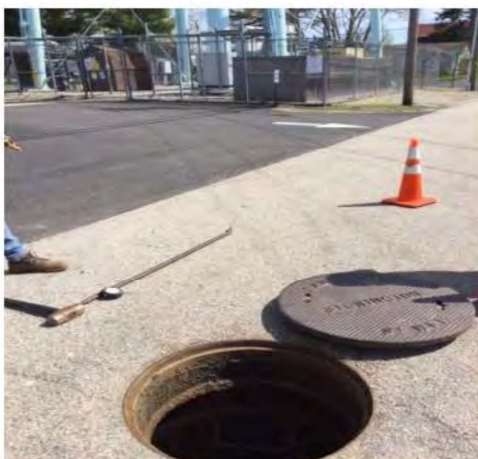
Type of Manhole: SANITARY SEWER (GRAVITY)

Inspection Status: SURFACE INSPECTION: LEVEL 1 (NO MANHOLE ENTRY)

Manhole Location and Configuration



Inspection Photos



**Manhole Inspection Form****Manhole Information****Inspector:** BH AND TT**Date:** 4/28/2022**Weather:** DRY (NO PRECIPITATION DURING SURVEY)**Street:** BROADWAT EXT**Location:** LOCAL RURAL STREETS**GIS MH No:** 1-3**Type of Manhole:** SANITARY SEWER (GRAVITY)**Inspection Status:** SURFACE INSPECTION: LEVEL 1 (NO MANHOLE ENTRY)**Rim to Invert (ft):** 14.25**Grade to Rim (in):** 0**Manhole Infiltration****Surcharge:** NO**Infiltration:** YES**Number of Holes:** 4**Metal Riser:** NO**Manhole Characteristics**

Location in MH	Mtrl. Code	Infil. Code	Cond. Code	Repair Codes	Comments
Frame/Cover	CAST IRON	NONE	SOUND	NONE	
Chimney	OTHER (DESCRIBE IN DETAILS)	NONE	SOUND	NONE	NO CHIMNEY.
Cone	OTHER (DESCRIBE IN DETAILS)	NONE	SOUND	NONE	NO CONE.
Wall	CONCRETE (PRECAST)	STAINS	SOUND	NONE	
Bench	BRICK	NONE	SOUND	NONE	
Invert/Channel	BRICK	NONE	SOUND	NONE	

Invert Information

Pipe	Direction	Rim to Invert	Pipe Dia. (in)	Pipe Mtrl. Code	Clock Position*	Comments
Pipe 1	OUT	14.25	30	REINFORCED CONCRETE PIPE	06:00	
Pipe 2	IN	14.25	30	REINFORCED CONCRETE PIPE	09:00	
Pipe 3	IN	14.25	6	POLY VINYL CHLORIDE	05:00	
Pipe 4						
Pipe 5						

**Additional
Comments**



CDM
Smith

Town of Stonington, Connecticut

Manhole Inspection Form

Manhole Information

Inspector: BH AND TT

Date: 4/28/2022

Weather: DRY (NO PRECIPITATION DURING SURVEY)

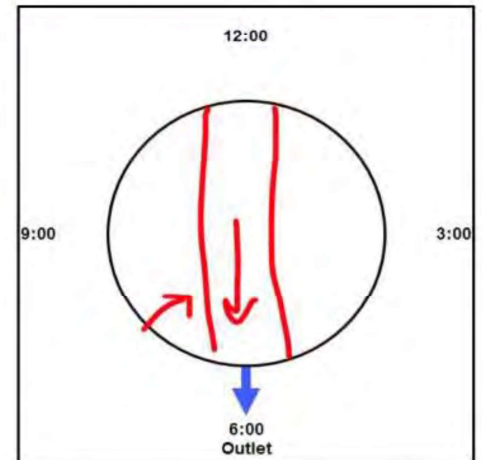
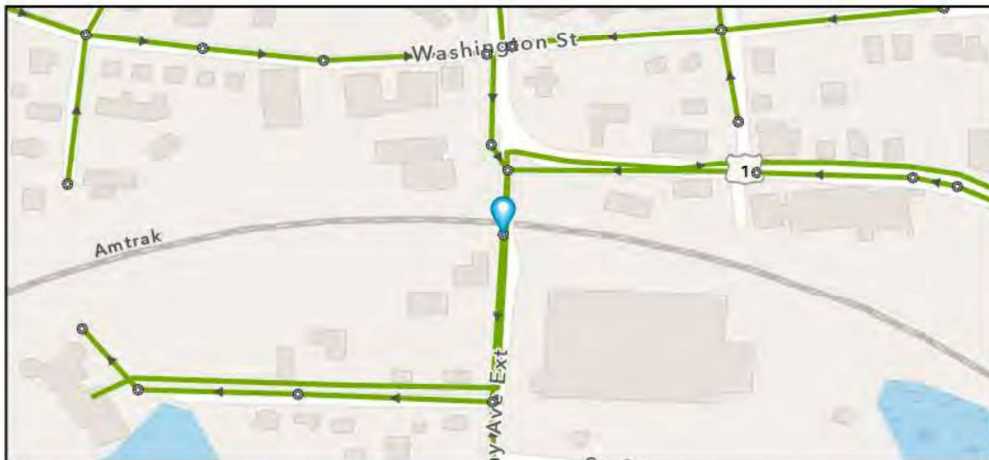
Street: BROADWAY EXT

GIS MH No: 1-4

Type of Manhole: SANITARY SEWER (GRAVITY)

Inspection Status: SURFACE INSPECTION: LEVEL 1 (NO MANHOLE ENTRY)

Manhole Location and Configuration



Inspection Photos



**Manhole Inspection Form****Manhole Information****Inspector:** BH AND TT**Date:** 4/28/2022**Weather:** DRY (NO PRECIPITATION DURING SURVEY)**Street:** BROADWAY EXT**Location:** SECONDARY ROADS**GIS MH No:** 1-4**Type of Manhole:** SANITARY SEWER (GRAVITY)**Inspection Status:** SURFACE INSPECTION: LEVEL 1 (NO MANHOLE ENTRY)**Rim to Invert (ft):** 14.5**Grade to Rim (in):** 0**Manhole Infiltration****Surcharge:** YES**Infiltration:** NO**Number of Holes:** 0**Metal Riser:** NO**Manhole Characteristics**

Location in MH	Mtrl. Code	Infil. Code	Cond. Code	Repair Codes	Comments
Frame/Cover	CAST IRON	STAINS	SOUND	NONE	
Chimney	BRICK	NONE	SOUND	NONE	
Cone	CONCRETE (PRECAST)	NONE	SOUND	NONE	DOUBLE CONE
Wall	CONCRETE (PRECAST)	NONE	SOUND	NONE	
Bench	BRICK	NONE	SOUND	NONE	
Invert/Channel	BRICK	NONE	SOUND	NONE	

Invert Information

Pipe	Direction	Rim to Invert	Pipe Dia. (in)	Pipe Mtrl. Code	Clock Position*	Comments
Pipe 1	OUT	14.5	30	REINFORCED CONCRETE PIPE	06:00	
Pipe 2	IN	6.5	6	POLY VINYL CHLORIDE	05:00	INSIDE DROP
Pipe 3	IN	14.5	24	REINFORCED CONCRETE PIPE	12:00	
Pipe 4						
Pipe 5						

**Additional
Comments** 6.5 FOR DROP



CDM
Smith

Town of Stonington, Connecticut

Manhole Inspection Form

Manhole Information

Inspector: BH AND TT

Date: 4/28/2022

Weather: DRY (NO PRECIPITATION DURING SURVEY)

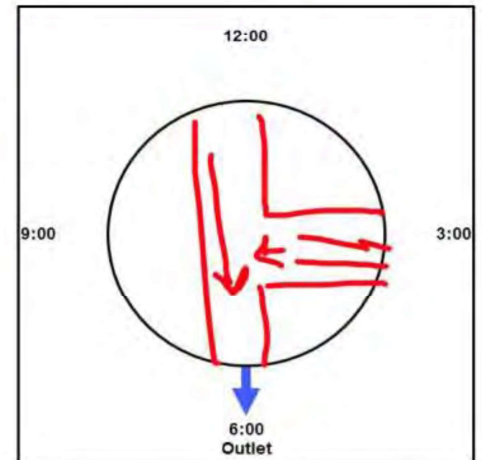
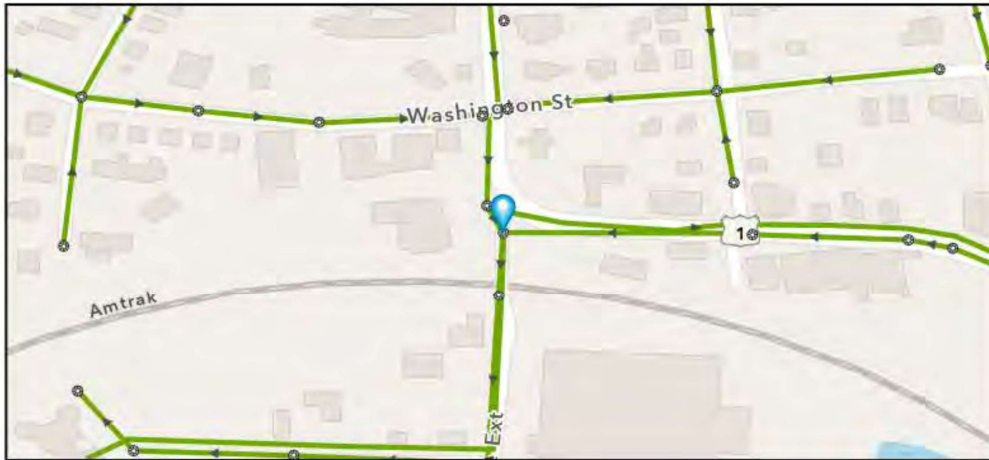
Street: BROADWAY EXT

GIS MH No: 1-5

Type of Manhole: SANITARY SEWER (GRAVITY)

Inspection Status: SURFACE INSPECTION: LEVEL 1 (NO MANHOLE ENTRY)

Manhole Location and Configuration



Inspection Photos



**Manhole Inspection Form****Manhole Information****Inspector:** BH AND TT**Date:** 4/28/2022**Weather:** DRY (NO PRECIPITATION DURING SURVEY)**Street:** BROADWAY EXT**Location:** SECONDARY ROADS**GIS MH No:** 1-5**Type of Manhole:** SANITARY SEWER (GRAVITY)**Inspection Status:** SURFACE INSPECTION: LEVEL 1 (NO MANHOLE ENTRY)**Rim to Invert (ft):** 15**Grade to Rim (in):** 0**Manhole Infiltration****Surcharge:** YES**Infiltration:** YES**Number of Holes:** 0**Metal Riser:** NO**Manhole Characteristics**

Location in MH	Mtrl. Code	Infil. Code	Cond. Code	Repair Codes	Comments
Frame/Cover	CAST IRON	NONE	CORRODED	REPLACE FRAME AND COVER	
Chimney	BRICK	NONE	SOUND	NONE	
Cone	OTHER (DESCRIBE IN DETAILS)	NONE	SOUND	NONE	NO CONE
Wall	CONCRETE (PRECAST)	WEEPER	DEFECTIVE	LINE_MANHOLE	TONS OF CORROSION
Bench	BRICK	NONE	SOUND	NONE	
Invert/Channel	BRICK	NONE	SOUND	NONE	

Invert Information

Pipe	Direction	Rim to Invert	Pipe Dia. (in)	Pipe Mtrl. Code	Clock Position*	Comments
Pipe 1	OUT	15	24	REINFORCED CONCRETE PIPE	06:00	
Pipe 2	IN	15	24	REINFORCED CONCRETE PIPE	12:00	
Pipe 3	IN	15	12	REINFORCED CONCRETE PIPE	03:00	BOTTOM OF DROP
Pipe 4	IN	12	12	REINFORCED CONCRETE PIPE	03:00	
Pipe 5						

**Additional
Comments**



CDM
Smith

Town of Stonington, Connecticut

Manhole Inspection Form

Manhole Information

Inspector: BH AND TT

Date: 4/28/2022

Weather: DRY (NO PRECIPITATION DURING SURVEY)

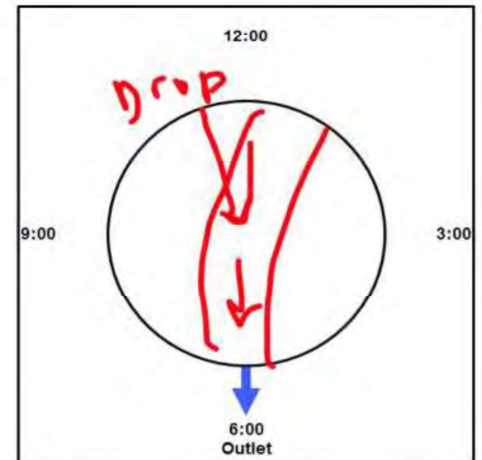
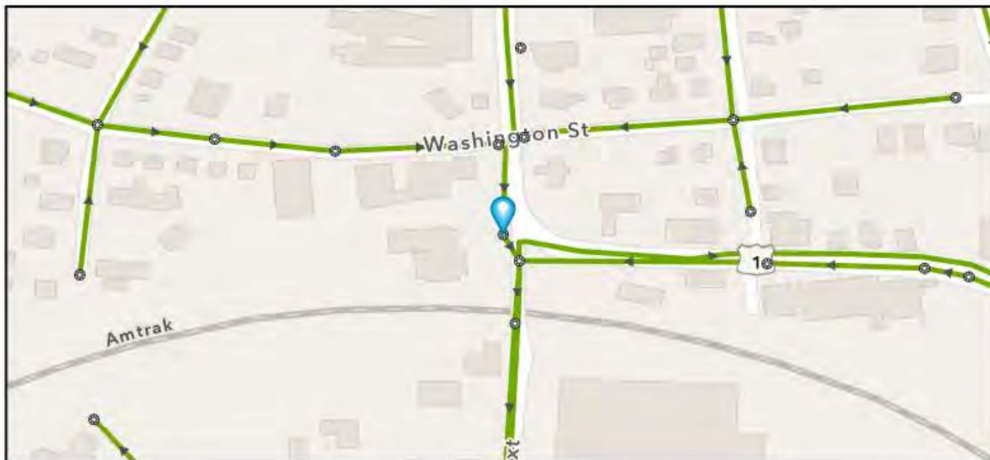
Street: BROADWAY

GIS MH No: 1-6

Type of Manhole: SANITARY SEWER (GRAVITY)

Inspection Status: SURFACE INSPECTION: LEVEL 1 (NO MANHOLE ENTRY)

Manhole Location and Configuration



Inspection Photos



**Manhole Inspection Form****Manhole Information****Inspector:** BH AND TT**Date:** 4/28/2022**Weather:** DRY (NO PRECIPITATION DURING SURVEY)**Street:** BROADWAY**Location:** PRIMARY ARTERIAL ROADS**GIS MH No:** 1-6**Type of Manhole:** SANITARY SEWER (GRAVITY)**Inspection Status:** SURFACE INSPECTION: LEVEL 1 (NO MANHOLE ENTRY)**Rim to Invert (ft):** 15**Grade to Rim (in):** 0**Manhole Infiltration****Surcharge:** YES**Infiltration:** YES**Number of Holes:** 0**Metal Riser:** NO**Manhole Characteristics**

Location in MH	Mtrl. Code	Infil. Code	Cond. Code	Repair Codes	Comments
Frame/Cover	CAST IRON	NONE	SOUND	NONE	
Chimney	BRICK	STAINS	DEFECTIVE	REBUILD TOP, REPLACE FRAME AND CHIMNEY	
Cone	OTHER (DESCRIBE IN DETAILS)	NONE	SOUND	NONE	NO CONE.
Wall	CONCRETE (PRECAST)	STAINS	SOUND	NONE	
Bench	BRICK	NONE	SOUND	NONE	
Invert/Channel	BRICK	NONE	SOUND	NONE	

Invert Information

Pipe	Direction	Rim to Invert	Pipe Dia. (in)	Pipe Mtrl. Code	Clock Position*	Comments
Pipe 1	OUT	15	24	REINFORCED CONCRETE PIPE	06:00	
Pipe 2	IN	7.75	6	POLY VINYL CHLORIDE	11:00	INSIDE DROP
Pipe 3	IN	15	24	REINFORCED CONCRETE PIPE	01:00	
Pipe 4						
Pipe 5						

**Additional
Comments**



CDM
Smith

Town of Stonington, Connecticut

Manhole Inspection Form

Manhole Information

Inspector: BH AND TT

Date: 4/28/2022

Weather: DRY (NO PRECIPITATION DURING SURVEY)

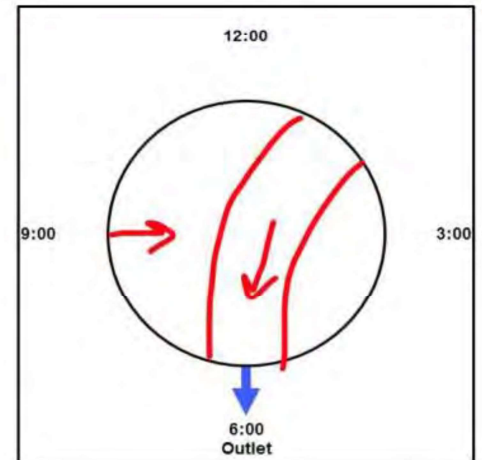
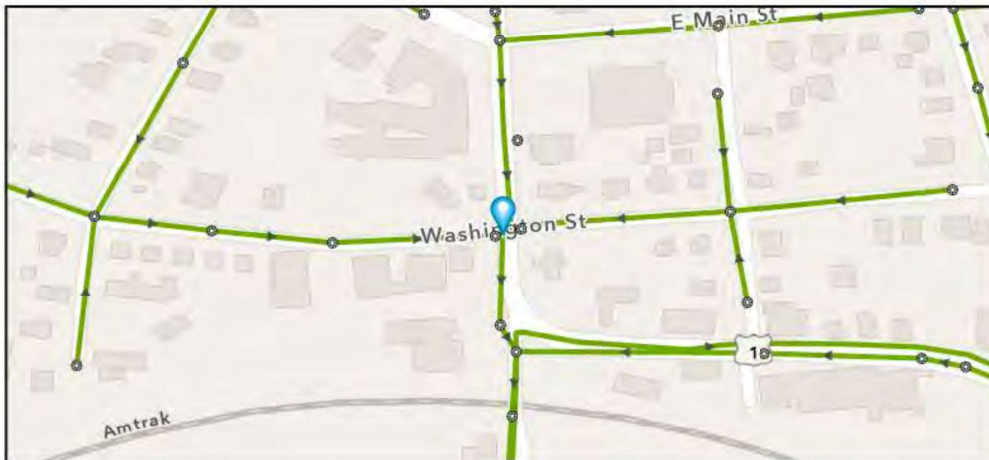
Street: ROUTE 1

GIS MH No: 1-7

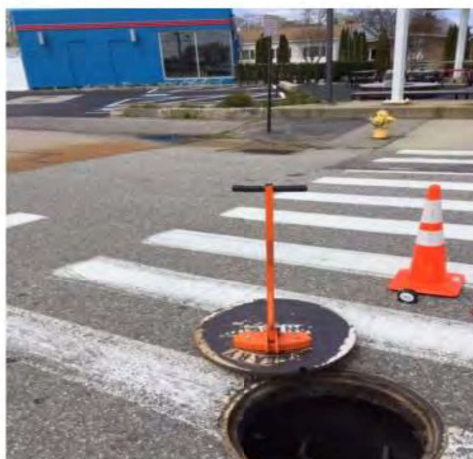
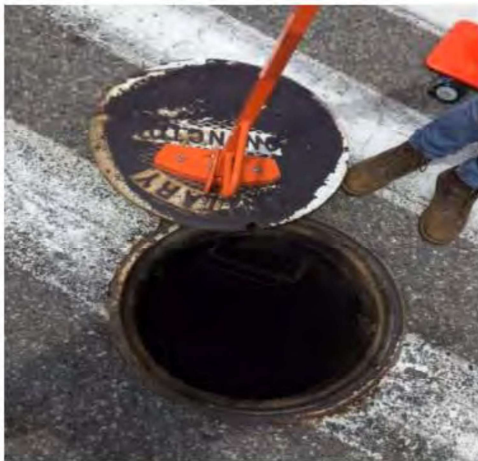
Type of Manhole: SANITARY SEWER (GRAVITY)

Inspection Status: SURFACE INSPECTION: LEVEL 1 (NO MANHOLE ENTRY)

Manhole Location and Configuration



Inspection Photos



**Manhole Inspection Form****Manhole Information****Inspector:** BH AND TT**Date:** 4/28/2022**Weather:** DRY (NO PRECIPITATION DURING SURVEY)**Street:** ROUTE 1**Location:** PRIMARY ARTERIAL ROADS**GIS MH No:** 1-7**Type of Manhole:** SANITARY SEWER (GRAVITY)**Inspection Status:** SURFACE INSPECTION: LEVEL 1 (NO MANHOLE ENTRY)**Rim to Invert (ft):** 12.75**Grade to Rim (in):** 0**Manhole Infiltration****Surcharge:** NO**Infiltration:** YES**Number of Holes:** 0**Metal Riser:** YES**Manhole Characteristics**

Location in MH	Mtrl. Code	Infil. Code	Cond. Code	Repair Codes	Comments
Frame/Cover	CAST IRON	NONE	SOUND	NONE	
Chimney	CONCRETE BLOCK	NONE	SOUND	NONE	
Cone	OTHER (DESCRIBE IN DETAILS)	NONE	SOUND	NONE	NO CONE.
Wall	CONCRETE (PRECAST)	STAINS	SOUND	NONE	
Bench	BRICK	NONE	SOUND	NONE	
Invert/Channel	BRICK	NONE	SOUND	NONE	

Invert Information

Pipe	Direction	Rim to Invert	Pipe Dia. (in)	Pipe Mtrl. Code	Clock Position*	Comments
Pipe 1	OUT	12.75	24	REINFORCED CONCRETE PIPE	06:00	
Pipe 2	IN	12.75	8	VITRIFIED CLAY PIPE	09:00	
Pipe 3	IN	12.75	24	REINFORCED CONCRETE PIPE	02:00	
Pipe 4						
Pipe 5						

**Additional
Comments**



CDM
Smith

Town of Stonington, Connecticut

Manhole Inspection Form

Manhole Information

Inspector: BH AND TT

Date: 4/28/2022

Weather: DRY (NO PRECIPITATION DURING SURVEY)

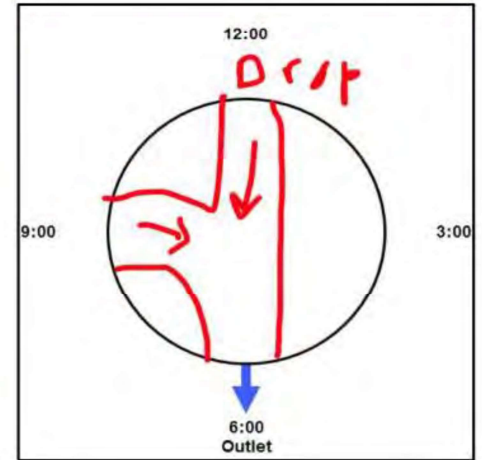
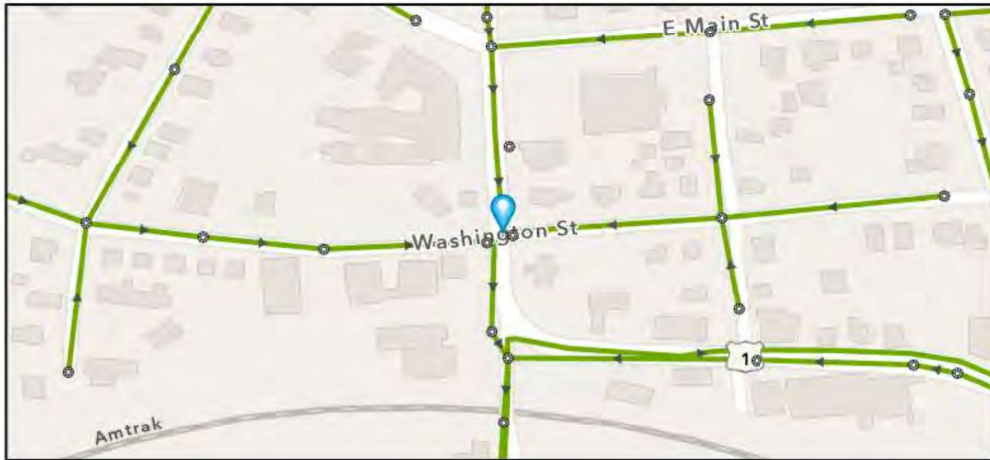
Street: ROUTE 1

GIS MH No: 1-8

Type of Manhole: SANITARY SEWER (GRAVITY)

Inspection Status: SURFACE INSPECTION: LEVEL 1 (NO MANHOLE ENTRY)

Manhole Location and Configuration



Inspection Photos



**Manhole Inspection Form****Manhole Information****Inspector:** BH AND TT**Date:** 4/28/2022**Weather:** DRY (NO PRECIPITATION DURING SURVEY)**Street:** ROUTE 1**Location:** PRIMARY ARTERIAL ROADS**GIS MH No:** 1-8**Type of Manhole:** SANITARY SEWER (GRAVITY)**Inspection Status:** SURFACE INSPECTION: LEVEL 1 (NO MANHOLE ENTRY)**Rim to Invert (ft):** 13.25**Grade to Rim (in):** 0**Manhole Infiltration****Surcharge:** YES**Infiltration:** YES**Number of Holes:** 4**Metal Riser:** YES**Manhole Characteristics**

Location in MH	Mtrl. Code	Infil. Code	Cond. Code	Repair Codes	Comments
Frame/Cover	CAST IRON	NONE	BROKEN	REPLACE FRAME AND COVER	
Chimney	CONCRETE BLOCK	NONE	SOUND	NONE	
Cone	OTHER (DESCRIBE IN DETAILS)	NONE	SOUND	OTHER	NO CONE.
Wall	CONCRETE (PRECAST)	RUNNER	DEFECTIVE	LINE_MANHOLE	SEDIMENT ALSO ON WALL AROUND NINE O CLOCK PIPE. RUNNER AROUND 2 O CLOCK.
Bench	BRICK	NONE	SOUND	NONE	
Invert/Channel	BRICK	NONE	SOUND	NONE	

Invert Information

Pipe	Direction	Rim to Invert	Pipe Dia. (in)	Pipe Mtrl. Code	Clock Position*	Comments
Pipe 1	OUT	13.25	24	REINFORCED CONCRETE PIPE	06:00	
Pipe 2	IN	13.25	24	REINFORCED CONCRETE PIPE	09:00	
Pipe 3	IN	13.25	12	VITRIFIED CLAY PIPE	12:00	BOTTOM OF DROP
Pipe 4	IN	7	12	VITRIFIED CLAY PIPE	12:00	TOP OF DROP
Pipe 5						

**Additional
Comments**



CDM
Smith

Town of Stonington, Connecticut

Manhole Inspection Form

Manhole Information

Inspector: BH AND TT

Date: 4/28/2022

Weather: DRY (NO PRECIPITATION DURING SURVEY)

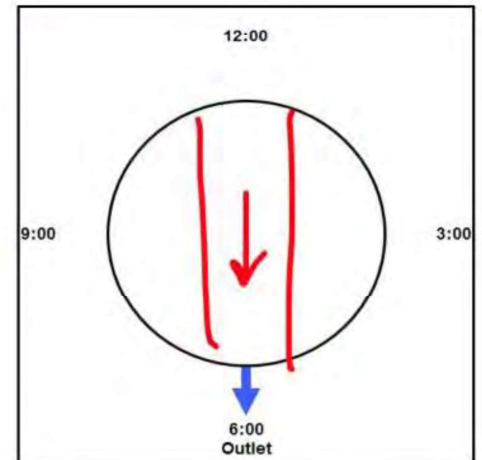
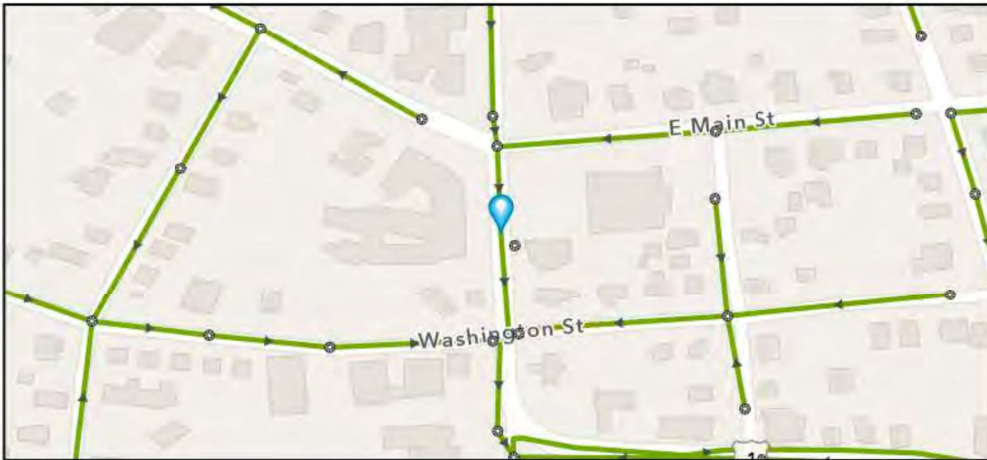
Street: ROUTE 27

GIS MH No: 1-9

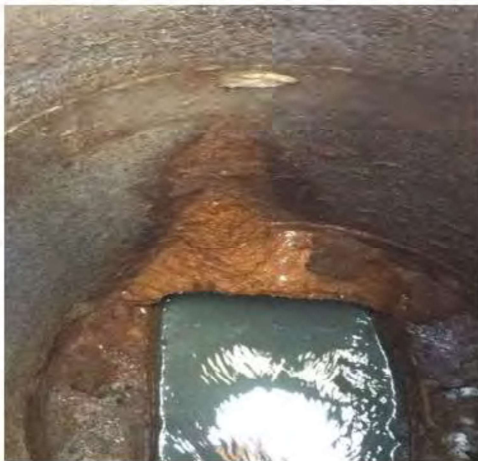
Type of Manhole: SANITARY SEWER (GRAVITY)

Inspection Status: SURFACE INSPECTION: LEVEL 1 (NO MANHOLE ENTRY)

Manhole Location and Configuration



Inspection Photos



**Manhole Inspection Form****Manhole Information****Inspector:** BH AND TT**Date:** 4/28/2022**Weather:** DRY (NO PRECIPITATION DURING SURVEY)**Street:** ROUTE 27**Location:** PRIMARY ARTERIAL ROADS**GIS MH No:** 1-9**Type of Manhole:** SANITARY SEWER (GRAVITY)**Inspection Status:** SURFACE INSPECTION: LEVEL 1 (NO MANHOLE ENTRY)**Rim to Invert (ft):** 13.5**Grade to Rim (in):** 0**Manhole Infiltration****Surcharge:** NO**Infiltration:** YES**Number of Holes:** 0**Metal Riser:** NO**Manhole Characteristics**

Location in MH	Mtrl. Code	Infil. Code	Cond. Code	Repair Codes	Comments
Frame/Cover	CAST IRON	NONE	SOUND	NONE	
Chimney	BRICK	NONE	DEFECTIVE	LINE MANHOLE	
Cone	OTHER (DESCRIBE IN DETAILS)	NONE	NOT KNOWN	NONE	
Wall	CONCRETE (PRECAST)	WEEPER	DEFECTIVE	LINE_MANHOLE	WEEPER WHERE HOLE FOR CARING WAS. MINERALS AND INFILTRATION ABOVE 12 O'CLOCK PIPE.
Bench	BRICK	NONE	SOUND	NONE	
Invert/Channel	BRICK	NONE	SOUND	NONE	

Invert Information

Pipe	Direction	Rim to Invert	Pipe Dia. (in)	Pipe Mtrl. Code	Clock Position*	Comments
Pipe 1	OUT	13.5	24	REINFORCED CONCRETE PIPE	06:00	
Pipe 2	IN	13.5	24	REINFORCED CONCRETE PIPE	12:00	
Pipe 3						
Pipe 4						
Pipe 5						

**Additional
Comments**



CDM
Smith

Town of Stonington, Connecticut

Manhole Inspection Form

Manhole Information

Inspector: BH AND TT

Date: 4/28/2022

Weather: DRY (NO PRECIPITATION DURING SURVEY)

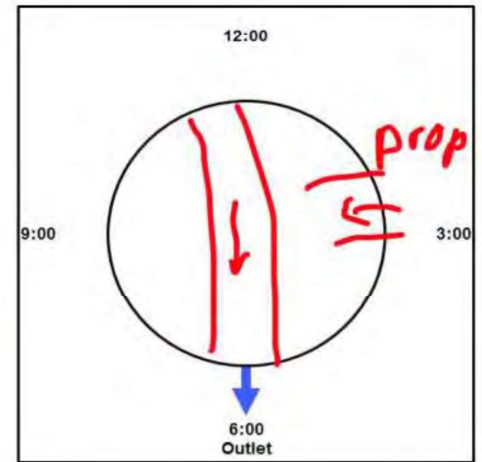
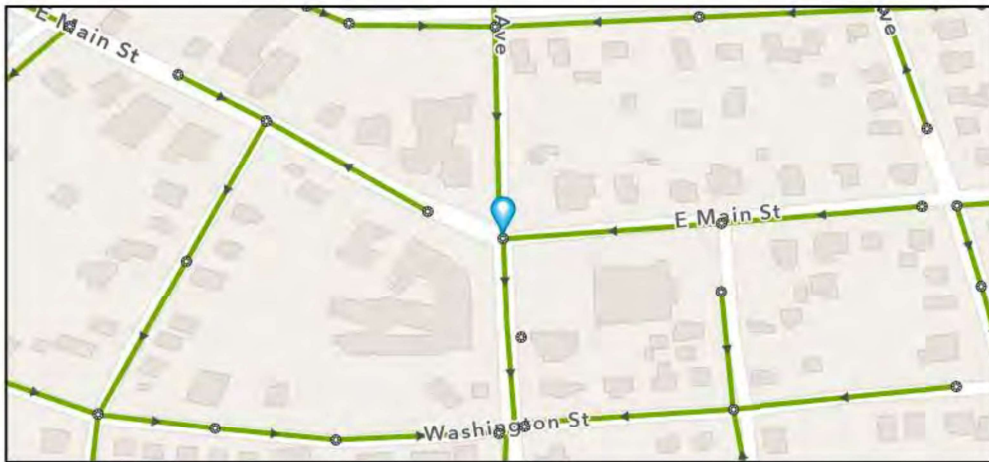
Street: ROUTE 1

GIS MH No: 1-10

Type of Manhole: SANITARY SEWER (GRAVITY)

Inspection Status: SURFACE INSPECTION: LEVEL 1 (NO MANHOLE ENTRY)

Manhole Location and Configuration



Inspection Photos



**Manhole Inspection Form****Manhole Information****Inspector:** BH AND TT**Date:** 4/28/2022**Weather:** DRY (NO PRECIPITATION DURING SURVEY)**GIS MH No:** 1-10**Type of Manhole:** SANITARY SEWER (GRAVITY)**Inspection Status:** SURFACE INSPECTION: LEVEL 1 (NO MANHOLE ENTRY)**Street:** ROUTE 1**Rim to Invert (ft):** 14**Location:** PRIMARY ARTERIAL ROADS**Grade to Rim (in):** 0**Manhole Infiltration****Surcharge:** YES**Number of Holes:** 0**Infiltration:** NO**Metal Riser:** NO**Manhole Characteristics**

Location in MH	Mtrl. Code	Infil. Code	Cond. Code	Repair Codes	Comments
Frame/Cover	CAST IRON	NONE	SOUND	NONE	
Chimney	BRICK	NONE	SOUND	NONE	
Cone	OTHER (DESCRIBE IN DETAILS)	NONE	SOUND	NONE	NO CONE
Wall	CONCRETE (PRECAST)	NONE	SOUND	NONE	
Bench	BRICK	NONE	SOUND	NONE	
Invert/Channel	BRICK	NONE	SOUND	NONE	

Invert Information

Pipe	Direction	Rim to Invert	Pipe Dia. (in)	Pipe Mtrl. Code	Clock Position*	Comments
Pipe 1	OUT	14	24	REINFORCED CONCRETE PIPE	06:00	
Pipe 2	IN	14	24	REINFORCED CONCRETE PIPE	11:00	
Pipe 3	IN	8.75	8	VITRIFIED CLAY PIPE	03:00	TOP OF DROP
Pipe 4	IN	14	8	VITRIFIED CLAY PIPE	03:00	BOTTOM OF DROP
Pipe 5						

**Additional
Comments**



CDM
Smith

Town of Stonington, Connecticut

Manhole Inspection Form

Manhole Information

Inspector: BH AND TT

Date: 4/18/2022

Weather: DRY (NO PRECIPITATION DURING SURVEY)

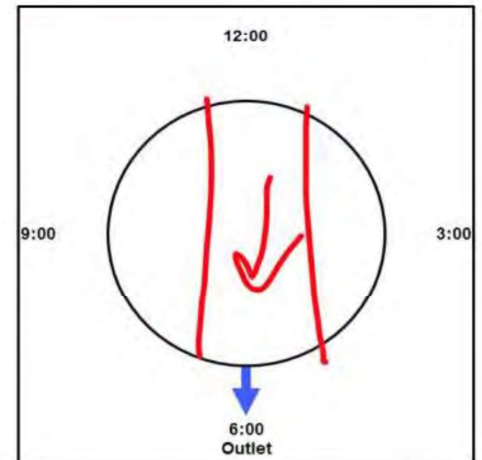
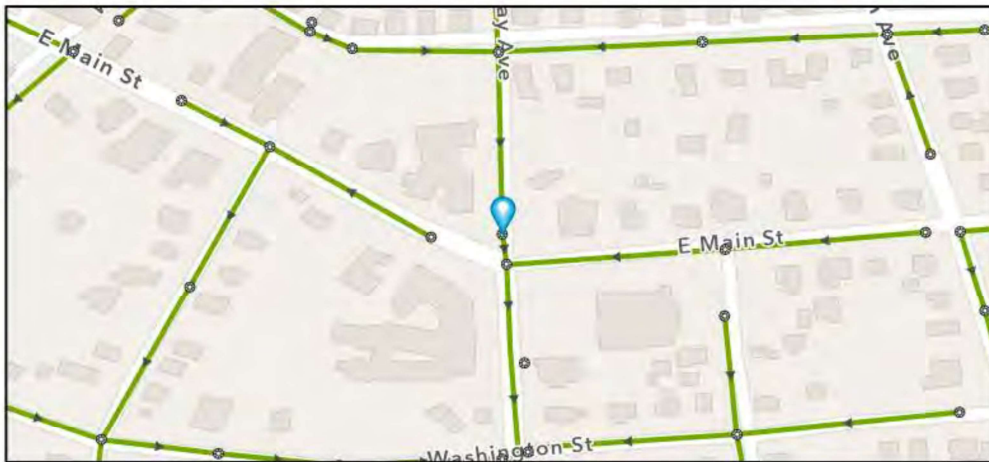
Street: ROUTE 1

GIS MH No: 1-11

Type of Manhole: SANITARY SEWER (GRAVITY)

Inspection Status: SURFACE INSPECTION: LEVEL 1 (NO MANHOLE ENTRY)

Manhole Location and Configuration



Inspection Photos



**Manhole Inspection Form****Manhole Information****Inspector:** BH AND TT**Date:** 4/18/2022**Weather:** DRY (NO PRECIPITATION DURING SURVEY)**Street:** ROUTE 1**Location:** PRIMARY ARTERIAL ROADS**GIS MH No:** 1-11**Type of Manhole:** SANITARY SEWER (GRAVITY)**Inspection Status:** SURFACE INSPECTION: LEVEL 1 (NO MANHOLE ENTRY)**Rim to Invert (ft):** 13.25**Grade to Rim (in):** 0**Manhole Infiltration****Surcharge:** NO**Infiltration:** YES**Number of Holes:** 0**Metal Riser:** YES**Manhole Characteristics**

Location in MH	Mtrl. Code	Infil. Code	Cond. Code	Repair Codes	Comments
Frame/Cover	CAST IRON	STAINS	SOUND	REPLACE FRAME AND COVER	
Chimney	BRICK	NONE	SOUND	NONE	
Cone	OTHER (DESCRIBE IN DETAILS)	NONE	SOUND	NONE	NO CONE
Wall	CONCRETE (PRECAST)	NONE	SOUND	NONE	
Bench	BRICK	NONE	SOUND	NONE	
Invert/Channel	BRICK	NONE	SOUND	NONE	

Invert Information

Pipe	Direction	Rim to Invert	Pipe Dia. (in)	Pipe Mtrl. Code	Clock Position*	Comments
Pipe 1	OUT	13.25	24	REINFORCED CONCRETE PIPE	06:00	
Pipe 2	IN	13.25	24	REINFORCED CONCRETE PIPE	12:30	
Pipe 3						
Pipe 4						
Pipe 5						

**Additional
Comments**



CDM
Smith

Town of Stonington, Connecticut

Manhole Inspection Form

Manhole Information

Inspector: BH AND TT

Date: 4/18/2022

Weather: DRY WEATHER, BUT WET GROUND

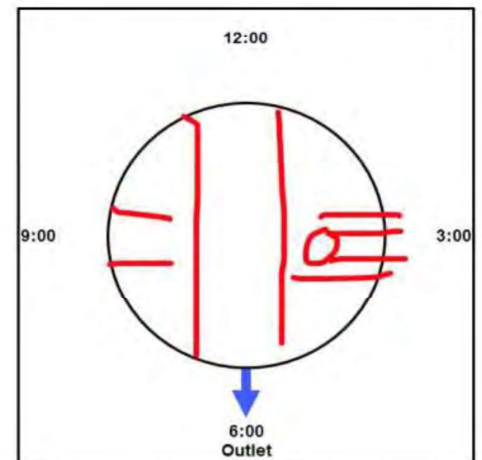
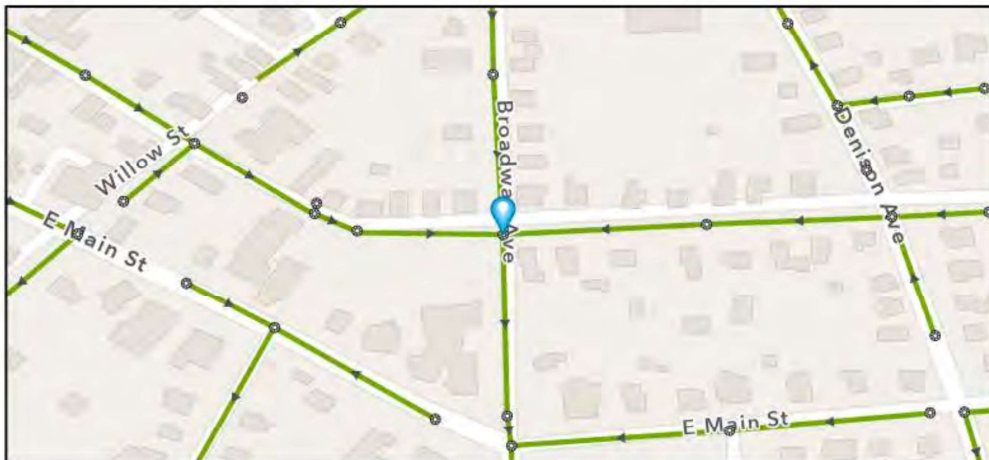
Street: WILLOW STREET

GIS MH No: 1-12

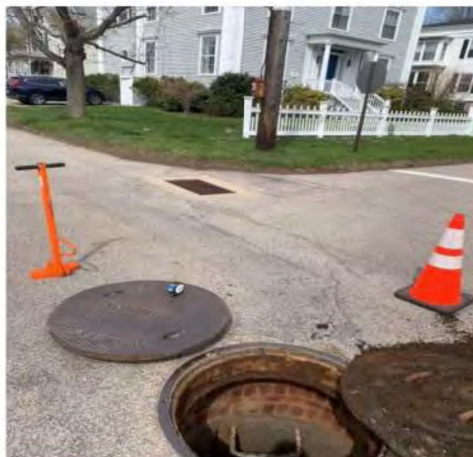
Type of Manhole: SANITARY SEWER (GRAVITY)

Inspection Status: SURFACE INSPECTION: LEVEL 1 (NO MANHOLE ENTRY)

Manhole Location and Configuration



Inspection Photos



**Manhole Inspection Form****Manhole Information****Inspector:** BH AND TT**Date:** 4/18/2022**Weather:** DRY WEATHER, BUT WET GROUND**Street:** WILLOW STREET**Location:** SECONDARY ROADS**GIS MH No:** 1-12**Type of Manhole:** SANITARY SEWER (GRAVITY)**Inspection Status:** SURFACE INSPECTION: LEVEL 1 (NO MANHOLE ENTRY)**Rim to Invert (ft):** 12**Grade to Rim (in):** 0**Manhole Infiltration****Surcharge:** NO**Infiltration:** YES**Number of Holes:** 0**Metal Riser:** NO**Manhole Characteristics**

Location in MH	Mtrl. Code	Infil. Code	Cond. Code	Repair Codes	Comments
Frame/Cover	CAST IRON	NONE	SOUND	NONE	
Chimney	BRICK	STAINS	DEFECTIVE	LINE MANHOLE	
Cone	OTHER (DESCRIBE IN DETAILS)	NONE	SOUND	NONE	NO CONE
Wall	CONCRETE (PRECAST)	STAINS	DEFECTIVE	LINE_MANHOLE	
Bench	BRICK	NONE	SOUND	NONE	
Invert/Channel	BRICK	NONE	SOUND	NONE	

Invert Information

Pipe	Direction	Rim to Invert	Pipe Dia. (in)	Pipe Mtrl. Code	Clock Position*	Comments
Pipe 1	OUT	12	24	REINFORCED PLASTIC PIPE	06:00	
Pipe 2	IN	12	6	REINFORCED CONCRETE PIPE	09:00	
Pipe 3	IN	12	24	REINFORCED CONCRETE PIPE	12:00	
Pipe 4	IN	8	6	VITRIFIED CLAY PIPE	03:00	
Pipe 5						

**Additional
Comments**



CDM
Smith

Town of Stonington, Connecticut

Manhole Inspection Form

Manhole Information

Inspector: BH AND TT

Date: 4/18/2022

Weather: DRY (NO PRECIPITATION DURING SURVEY)

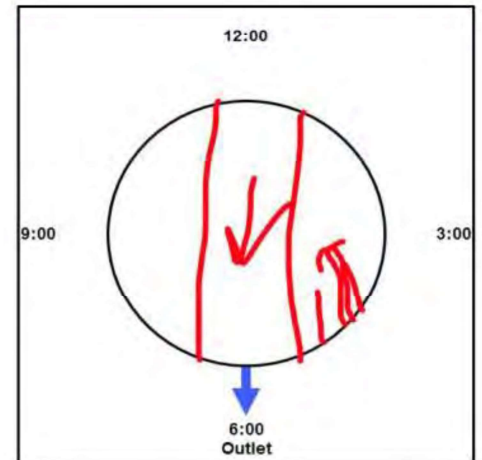
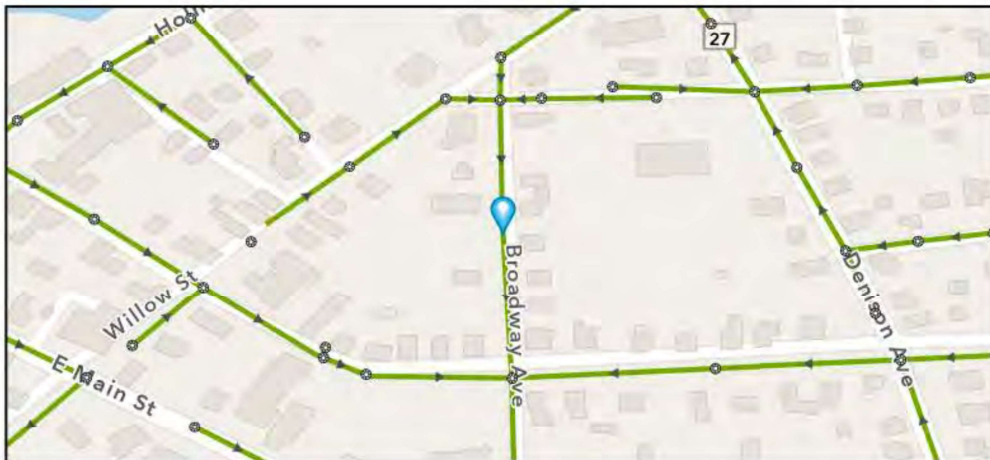
Street: WILLOW STREET

GIS MH No: 1-13

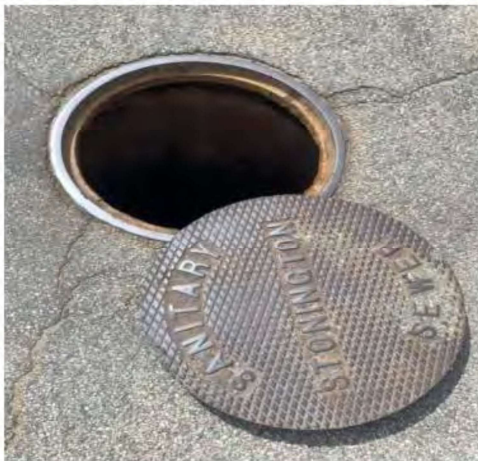
Type of Manhole: SANITARY SEWER (GRAVITY)

Inspection Status: SURFACE INSPECTION: LEVEL 1 (NO MANHOLE ENTRY)

Manhole Location and Configuration



Inspection Photos



**Manhole Inspection Form****Manhole Information****Inspector:** BH AND TT**Date:** 4/18/2022**Weather:** DRY (NO PRECIPITATION DURING SURVEY)**GIS MH No:** 1-13**Type of Manhole:** SANITARY SEWER (GRAVITY)**Inspection Status:** SURFACE INSPECTION; LEVEL 1 (NO MANHOLE ENTRY)**Street:** WILLOW STREET**Rim to Invert (ft):** 13**Location:** SECONDARY ROADS**Grade to Rim (in):** 0**Manhole Infiltration****Surcharge:** NO**Number of Holes:** 0**Infiltration:** YES**Metal Riser:** NO**Manhole Characteristics**

Location in MH	Mtrl. Code	Infil. Code	Cond. Code	Repair Codes	Comments
Frame/Cover	CAST IRON	NONE	SOUND	NONE	
Chimney	BRICK	STAINS	DEFECTIVE	LINE MANHOLE	
Cone	NOT KNOWN	NONE	SOUND	NONE	NO CONE
Wall	CONCRETE (PRECAST)	GUSHER	DEFECTIVE	LINE_MANHOLE	
Bench	BRICK	NONE	SOUND	NONE	
Invert/Channel	BRICK	NONE	SOUND	NONE	

Invert Information

Pipe	Direction	Rim to Invert	Pipe Dia. (in)	Pipe Mtrl. Code	Clock Position*	Comments
Pipe 1	OUT	13	24	REINFORCED CONCRETE PIPE	06:00	
Pipe 2	IN	13	24	REINFORCED CONCRETE PIPE	12:00	
Pipe 3	IN	12	6	VITRIFIED CLAY PIPE	05:00	
Pipe 4						
Pipe 5						

**Additional
Comments**



CDM
Smith

Town of Stonington, Connecticut

Manhole Inspection Form

Manhole Information

Inspector: BH AND TT

Date: 4/18/2022

Weather: DRY (NO PRECIPITATION DURING SURVEY)

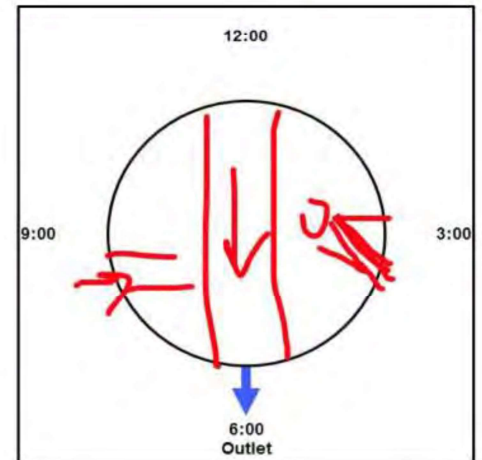
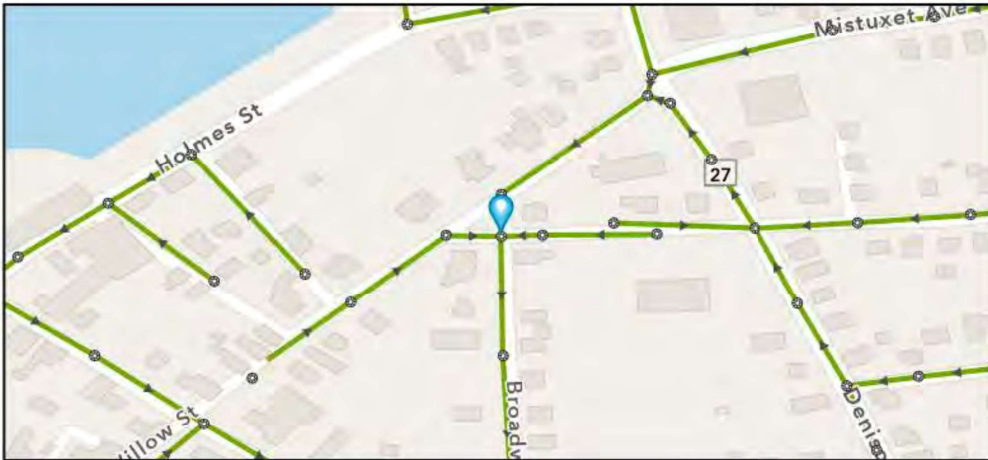
Street: WILLOW STREET

GIS MH No: 1-14

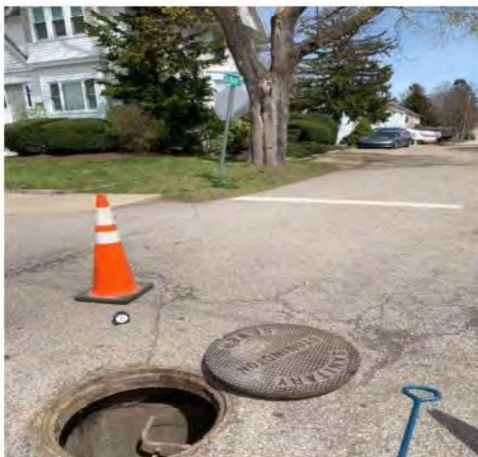
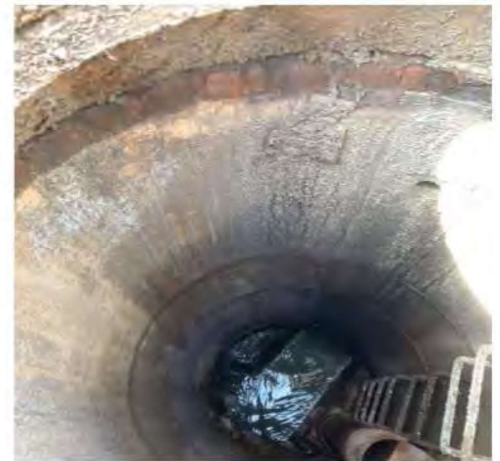
Type of Manhole: SANITARY SEWER (GRAVITY)

Inspection Status: SURFACE INSPECTION: LEVEL 1 (NO MANHOLE ENTRY)

Manhole Location and Configuration



Inspection Photos



**Manhole Inspection Form****Manhole Information****Inspector:** BH AND TT**Date:** 4/18/2022**Weather:** DRY (NO PRECIPITATION DURING SURVEY)**GIS MH No:** 1-14**Type of Manhole:** SANITARY SEWER (GRAVITY)**Inspection Status:** SURFACE INSPECTION: LEVEL 1 (NO MANHOLE ENTRY)**Street:** WILLOW STREET**Rim to Invert (ft):** 13.75**Location:** SECONDARY ROADS**Grade to Rim (in):** 0**Manhole Infiltration****Surcharge:** NO**Number of Holes:** 0**Infiltration:** YES**Metal Riser:** YES**Manhole Characteristics**

Location in MH	Mtrl. Code	Infil. Code	Cond. Code	Repair Codes	Comments
Frame/Cover	CAST IRON	STAINS	CORRODED	LINE MANHOLE	
Chimney	BRICK	NONE	DEFECTIVE	LINE MANHOLE	CORRODED
Cone	OTHER (DESCRIBE IN DETAILS)	NONE	SOUND	NONE	NO CONE
Wall	CONCRETE (PRECAST)	NONE	DEFECTIVE	LINE_MANHOLE	CORRODED
Bench	BRICK	NONE	SOUND	NONE	
Invert/Channel	BRICK	NONE	SOUND	NONE	

Invert Information

Pipe	Direction	Rim to Invert	Pipe Dia. (in)	Pipe Mtrl. Code	Clock Position*	Comments
Pipe 1	OUT	13.75	24	REINFORCED CONCRETE PIPE	06:00	
Pipe 2	IN	13.75	6	REINFORCED CONCRETE PIPE	09:00	
Pipe 3	IN	13.75	24	REINFORCED CONCRETE PIPE	12:00	
Pipe 4	IN	7	6	VITRIFIED CLAY PIPE	04:00	DROP LINE
Pipe 5						

**Additional
Comments**



Town of Stonington, Connecticut

Manhole Inspection Form

Manhole Information

Inspector: TT BH

Date: 2/21/2022

Weather: DRY (NO PRECIPITATION DURING SURVEY)

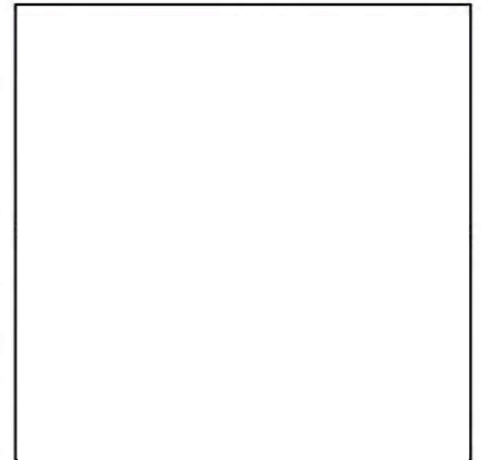
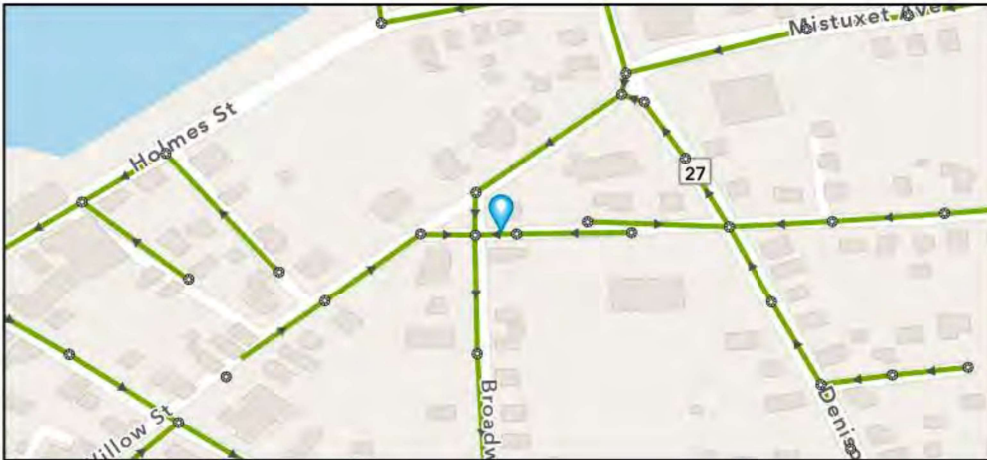
Street: SCHOOL ST

GIS MH No: 1-14A

Type of Manhole:

Inspection Status: NOT FOUND

Manhole Location and Configuration



Inspection Photos



**Manhole Inspection Form****Manhole Information**

Inspector: TT BH GIS MH No: 1-14A
Date: 2/21/2022 Type of Manhole:
Weather: DRY (NO PRECIPITATION DURING SURVEY) Inspection Status: NOT FOUND
Street: SCHOOL ST Rim to Invert (ft):
Location: SECONDARY ROADS Grade to Rim (in):

Manhole Infiltration

Surcharge: Number of Holes:
Infiltration: Metal Riser:

Manhole Characteristics

Location in MH	Mtrl. Code	Infil. Code	Cond. Code	Repair Codes	Comments
Frame/Cover					
Chimney					
Cone					
Wall					
Bench					
Invert/Channel					

Invert Information

Pipe	Direction	Rim to Invert	Pipe Dia. (in)	Pipe Mtrl. Code	Clock Position*	Comments
Pipe 1						
Pipe 2						
Pipe 3						
Pipe 4						
Pipe 5						

Additional
Comments



CDM
Smith

Town of Stonington, Connecticut

Manhole Inspection Form

Manhole Information

Inspector: BH AND TT

Date: 4/18/2022

Weather: DRY (NO PRECIPITATION DURING SURVEY)

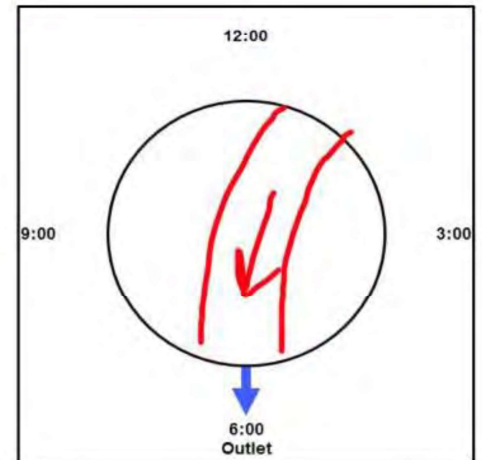
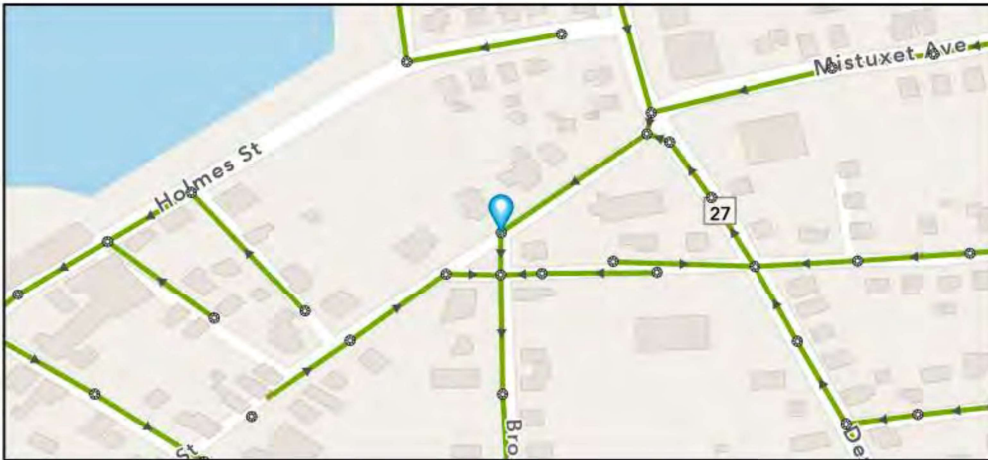
Street: WILLOW STREET

GIS MH No: 1-15

Type of Manhole: SANITARY SEWER (GRAVITY)

Inspection Status: SURFACE INSPECTION: LEVEL 1 (NO MANHOLE ENTRY)

Manhole Location and Configuration



Inspection Photos



**Manhole Inspection Form****Manhole Information****Inspector:** BH AND TT**Date:** 4/18/2022**Weather:** DRY (NO PRECIPITATION DURING SURVEY)**Street:** WILLOW STREET**Location:** SECONDARY ROADS**GIS MH No:** 1-15**Type of Manhole:** SANITARY SEWER (GRAVITY)**Inspection Status:** SURFACE INSPECTION: LEVEL 1 (NO MANHOLE ENTRY)**Rim to Invert (ft):** 13.25**Grade to Rim (in):** 0**Manhole Infiltration****Surcharge:** NO**Infiltration:** YES**Number of Holes:** 0**Metal Riser:** YES**Manhole Characteristics**

Location in MH	Mtrl. Code	Infil. Code	Cond. Code	Repair Codes	Comments
Frame/Cover	CAST IRON	STAINS	BROKEN	REPLACE FRAME AND COVER	
Chimney	BRICK	NONE	SOUND	NONE	
Cone	NOT KNOWN	NONE	SOUND	NONE	
Wall	CONCRETE (PRECAST)	NONE	SOUND	NONE	
Bench	BRICK	NONE	SOUND	NONE	
Invert/Channel	BRICK	NONE	SOUND	NONE	

Invert Information

Pipe	Direction	Rim to Invert	Pipe Dia. (in)	Pipe Mtrl. Code	Clock Position*	Comments
Pipe 1	OUT	13.25	24	REINFORCED CONCRETE PIPE	06:00	
Pipe 2	IN	13.25	24	REINFORCED CONCRETE PIPE	01:00	
Pipe 3						
Pipe 4						
Pipe 5						

**Additional
Comments**



Manhole Inspection Form

Manhole Information

Inspector: BH AND TT

Date: 4/18/2022

Weather: DRY (NO PRECIPITATION DURING SURVEY)

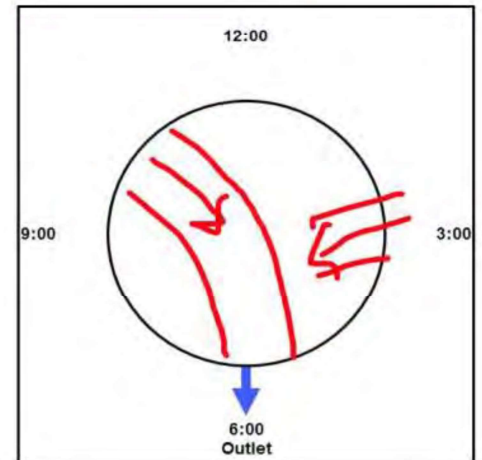
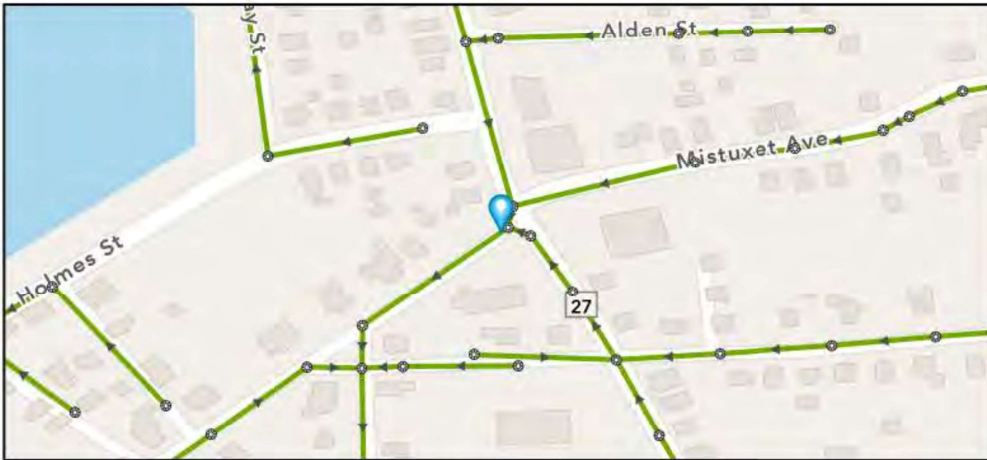
Street: WILLOW STREET

GIS MH No: 1-16

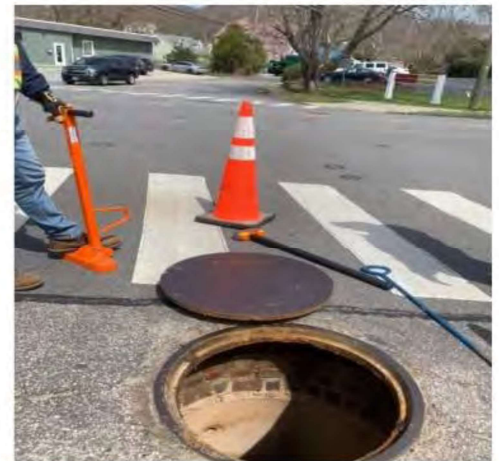
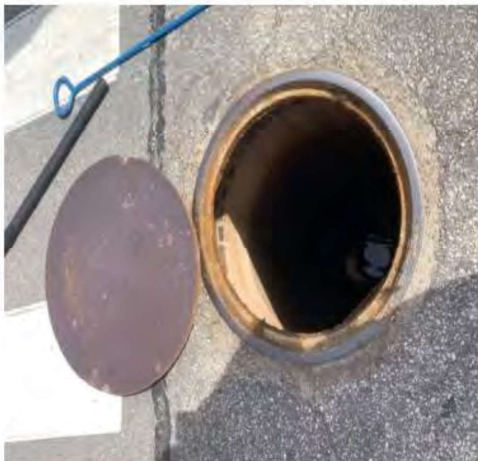
Type of Manhole: SANITARY SEWER (GRAVITY)

Inspection Status: SURFACE INSPECTION: LEVEL 1 (NO MANHOLE ENTRY)

Manhole Location and Configuration



Inspection Photos



**Manhole Inspection Form****Manhole Information****Inspector:** BH AND TT**Date:** 4/18/2022**Weather:** DRY (NO PRECIPITATION DURING SURVEY)**GIS MH No:** 1-16**Type of Manhole:** SANITARY SEWER (GRAVITY)**Inspection Status:** SURFACE INSPECTION: LEVEL 1 (NO MANHOLE ENTRY)**Street:** WILLOW STREET**Rim to Invert (ft):** 13.5**Location:** SECONDARY ROADS**Grade to Rim (in):** 0**Manhole Infiltration****Surcharge:** NO**Number of Holes:** 0**Infiltration:** NO**Metal Riser:** NO**Manhole Characteristics**

Location in MH	Mtrl. Code	Infil. Code	Cond. Code	Repair Codes	Comments
Frame/Cover	CAST IRON	NONE	SOUND	NONE	
Chimney	BRICK	NONE	SOUND	NONE	
Cone	OTHER (DESCRIBE IN DETAILS)	STAINS	SOUND	NONE	NO CONE
Wall	CONCRETE (PRECAST)	NONE	SOUND	NONE	
Bench	BRICK	NONE	SOUND	NONE	
Invert/Channel	BRICK	NONE	SOUND	NONE	

Invert Information

Pipe	Direction	Rim to Invert	Pipe Dia. (in)	Pipe Mtrl. Code	Clock Position*	Comments
Pipe 1	OUT	13.5	24	REINFORCED CONCRETE PIPE	06:00	
Pipe 2	IN	13.5	24	REINFORCED CONCRETE PIPE	10:30	
Pipe 3	IN	13.5	6	REINFORCED CONCRETE PIPE	02:00	
Pipe 4						
Pipe 5						

**Additional
Comments**



CDM
Smith

Town of Stonington, Connecticut

Manhole Inspection Form

Manhole Information

Inspector: BH AND TT

Date: 4/18/2022

Weather: DRY (NO PRECIPITATION DURING SURVEY)

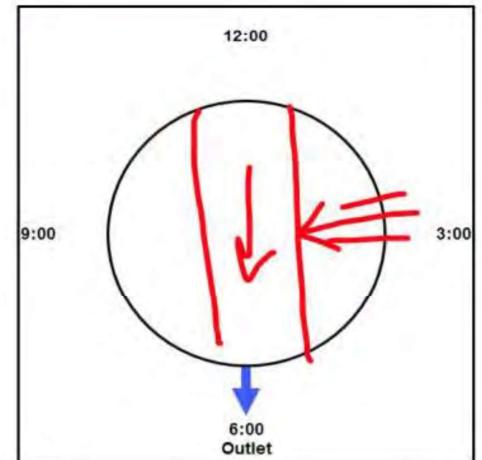
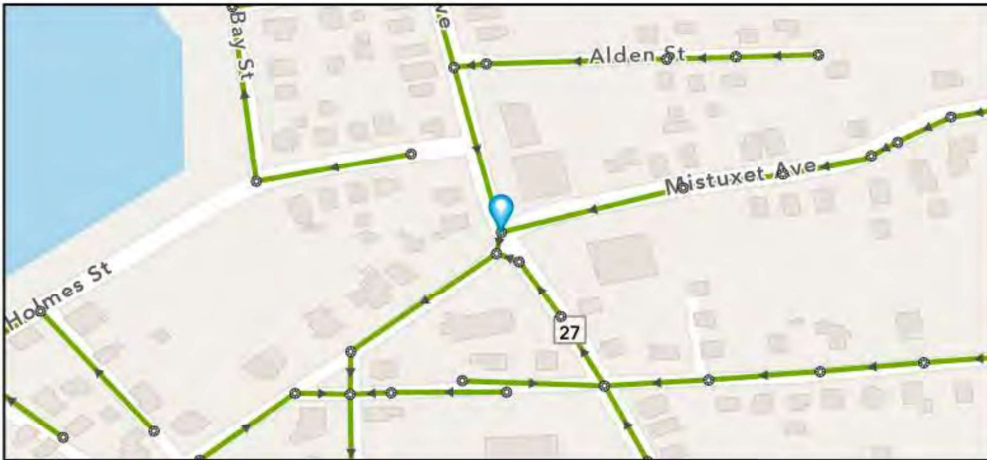
Street: ROUTE 27

GIS MH No: 1-17

Type of Manhole: SANITARY SEWER (GRAVITY)

Inspection Status: SURFACE INSPECTION: LEVEL 1 (NO MANHOLE ENTRY)

Manhole Location and Configuration



Inspection Photos



**Manhole Inspection Form****Manhole Information****Inspector:** BH AND TT**Date:** 4/18/2022**Weather:** DRY (NO PRECIPITATION DURING SURVEY)**Street:** ROUTE 27**Location:** PRIMARY ARTERIAL ROADS**GIS MH No:** 1-17**Type of Manhole:** SANITARY SEWER (GRAVITY)**Inspection Status:** SURFACE INSPECTION: LEVEL 1 (NO MANHOLE ENTRY)**Rim to Invert (ft):** 13.25**Grade to Rim (in):** 0**Manhole Infiltration****Surcharge:** NO**Infiltration:** YES**Number of Holes:** 0**Metal Riser:** YES**Manhole Characteristics**

Location in MH	Mtrl. Code	Infil. Code	Cond. Code	Repair Codes	Comments
Frame/Cover	CAST IRON	STAINS	SOUND	REPLACE FRAME AND COVER	
Chimney	BRICK	NONE	DEFECTIVE	RESET EXISTING FRAME AND CHIMNEY	
Cone	OTHER (DESCRIBE IN DETAILS)	NONE	SOUND	NONE	NO CONE
Wall	CONCRETE (PRECAST)	NONE	SOUND	NONE	
Bench	BRICK	NONE	SOUND	NONE	
Invert/Channel	BRICK	NONE	SOUND	NONE	

Invert Information

Pipe	Direction	Rim to Invert	Pipe Dia. (in)	Pipe Mtrl. Code	Clock Position*	Comments
Pipe 1	OUT	13.25	24	REINFORCED CONCRETE PIPE	06:00	
Pipe 2	IN	13.25	24	REINFORCED CONCRETE PIPE	11:00	
Pipe 3	IN	13	6	REINFORCED CONCRETE PIPE	02:00	
Pipe 4						
Pipe 5						

**Additional
Comments**



CDM
Smith

Town of Stonington, Connecticut

Manhole Inspection Form

Manhole Information

Inspector: BH AND TT

Date: 4/18/2022

Weather: DRY (NO PRECIPITATION DURING SURVEY)

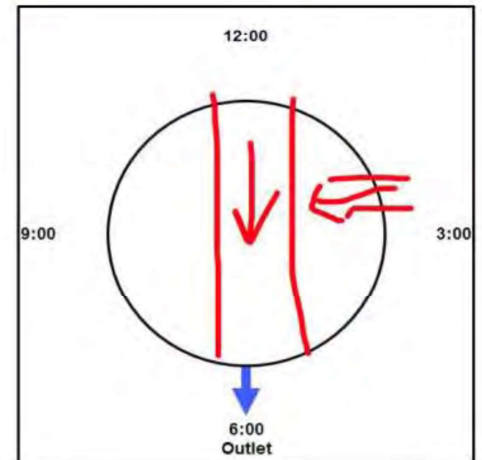
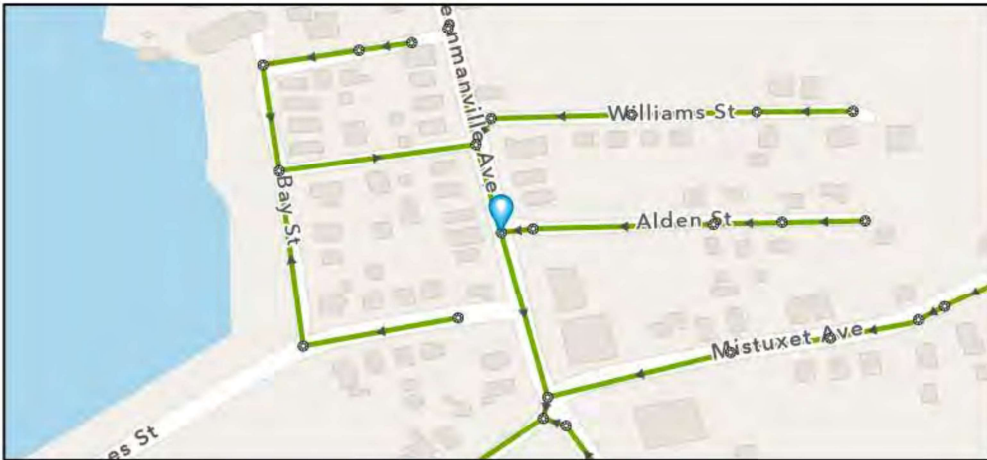
Street: ROUTE 27

GIS MH No: 1-18

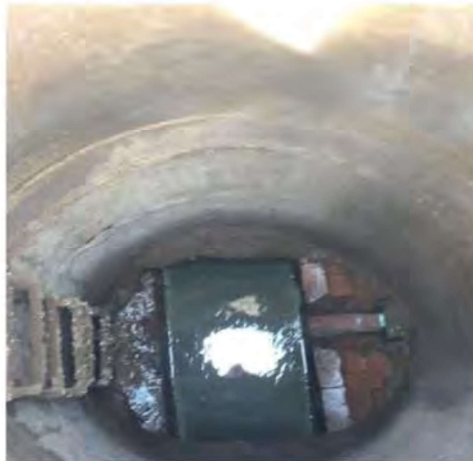
Type of Manhole: SANITARY SEWER (GRAVITY)

Inspection Status: SURFACE INSPECTION: LEVEL 1 (NO MANHOLE ENTRY)

Manhole Location and Configuration



Inspection Photos



**Manhole Inspection Form****Manhole Information****Inspector:** BH AND TT**Date:** 4/18/2022**Weather:** DRY (NO PRECIPITATION DURING SURVEY)**Street:** ROUTE 27**Location:** PRIMARY ARTERIAL ROADS**GIS MH No:** 1-18**Type of Manhole:** SANITARY SEWER (GRAVITY)**Inspection Status:** SURFACE INSPECTION: LEVEL 1 (NO MANHOLE ENTRY)**Rim to Invert (ft):** 13.25**Grade to Rim (in):** 0**Manhole Infiltration****Surcharge:** NO**Infiltration:** YES**Number of Holes:** 0**Metal Riser:** YES**Manhole Characteristics**

Location in MH	Mtrl. Code	Infil. Code	Cond. Code	Repair Codes	Comments
Frame/Cover	CAST IRON	STAINS	BROKEN	REPLACE FRAME AND COVER	
Chimney	BRICK	NONE	SOUND	NONE	
Cone	NOT KNOWN	NONE	SOUND	NONE	NO CONE
Wall	CONCRETE (PRECAST)	NONE	SOUND	NONE	
Bench	BRICK	NONE	SOUND	NONE	
Invert/Channel	BRICK	NONE	SOUND	NONE	

Invert Information

Pipe	Direction	Rim to Invert	Pipe Dia. (in)	Pipe Mtrl. Code	Clock Position*	Comments
Pipe 1	OUT	13.25	24	REINFORCED CONCRETE PIPE	06:00	
Pipe 2	IN	13.25	24	REINFORCED CONCRETE PIPE	12:00	
Pipe 3	IN	12	6	REINFORCED CONCRETE PIPE	03:00	
Pipe 4						
Pipe 5						

**Additional
Comments**



CDM
Smith

Town of Stonington, Connecticut

Manhole Inspection Form

Manhole Information

Inspector: BH AND TT

Date: 4/18/2022

Weather: DRY (NO PRECIPITATION DURING SURVEY)

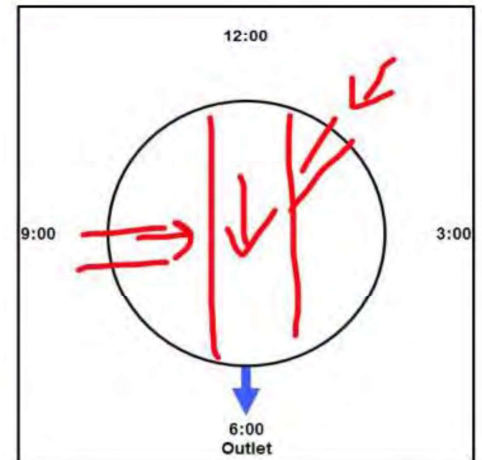
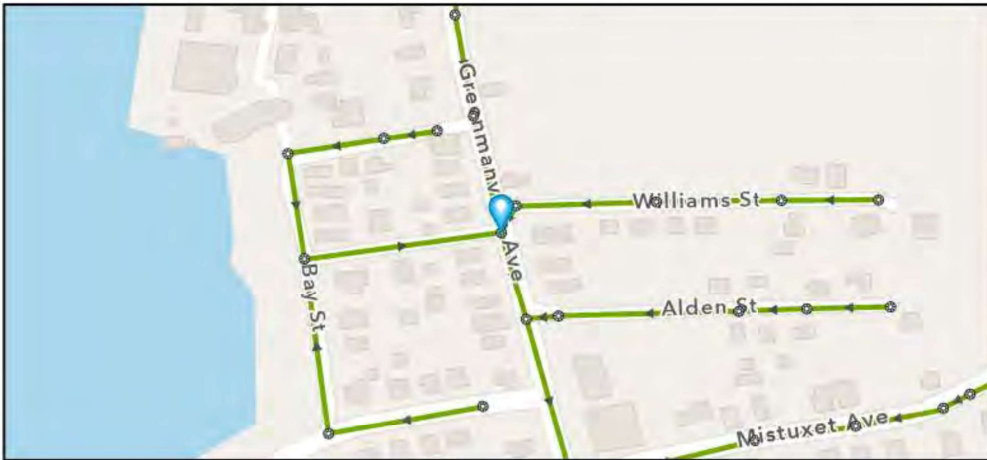
Street: ROUTE 27

GIS MH No: 1-19

Type of Manhole: SANITARY SEWER (GRAVITY)

Inspection Status: SURFACE INSPECTION: LEVEL 1 (NO MANHOLE ENTRY)

Manhole Location and Configuration



Inspection Photos





Town of Stonington, Connecticut

Manhole Inspection Form

Manhole Information

Inspector: BH AND TT

Date: 4/18/2022

Weather: DRY (NO PRECIPITATION DURING SURVEY)

Street: ROUTE 27

Location: PRIMARY ARTERIAL ROADS

GIS MH No: 1-19

Type of Manhole: SANITARY SEWER (GRAVITY)

Inspection Status: SURFACE INSPECTION: LEVEL 1 (NO MANHOLE ENTRY)

Rim to Invert (ft): 12.5

Grade to Rim (in): 0

Manhole Infiltration

Surcharge: NO

Infiltration: NO

Number of Holes: 0

Metal Riser: YES

Manhole Characteristics

Location in MH	Mtrl. Code	Infil. Code	Cond. Code	Repair Codes	Comments
Frame/Cover	CAST IRON	STAINS	SOUND	REPLACE FRAME AND COVER	
Chimney	BRICK	NONE	SOUND	NONE	
Cone	OTHER (DESCRIBE IN DETAILS)	NONE	SOUND	NONE	NO CONE
Wall	CONCRETE (PRECAST)	NONE	SOUND	NONE	
Bench	BRICK	NONE	SOUND	NONE	
Invert/Channel	BRICK	NONE	SOUND	NONE	

Invert Information

Pipe	Direction	Rim to Invert	Pipe Dia. (in)	Pipe Mtrl. Code	Clock Position*	Comments
Pipe 1	OUT	12	24	REINFORCED CONCRETE PIPE	06:00	
Pipe 2	IN	12.5	6	REINFORCED CONCRETE PIPE	09:00	
Pipe 3	IN	12.5	24	REINFORCED CONCRETE PIPE	12:00	
Pipe 4	IN	12.5	6	POLY VINYL CHLORIDE	02:00	
Pipe 5						

Additional
Comments

*6:00 is outlet



CDM
Smith

Town of Stonington, Connecticut

Manhole Inspection Form

Manhole Information

Inspector: BM AK

Date: 9/8/2022

Weather: DRY (NO PRECIPITATION DURING SURVEY)

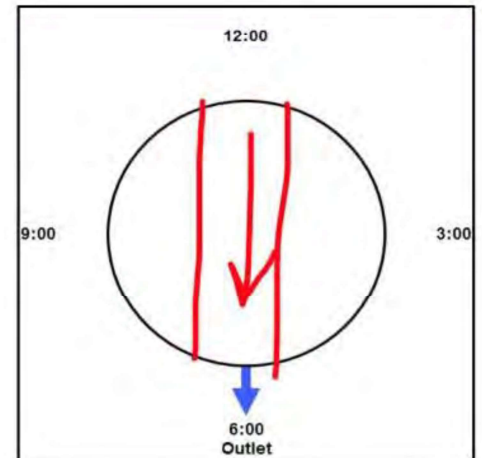
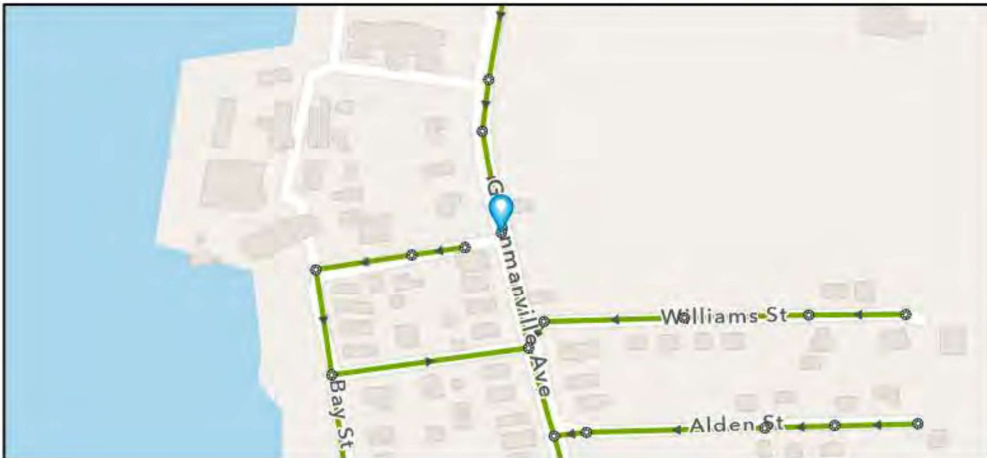
Street: ROUTE 27

GIS MH No: 1-20

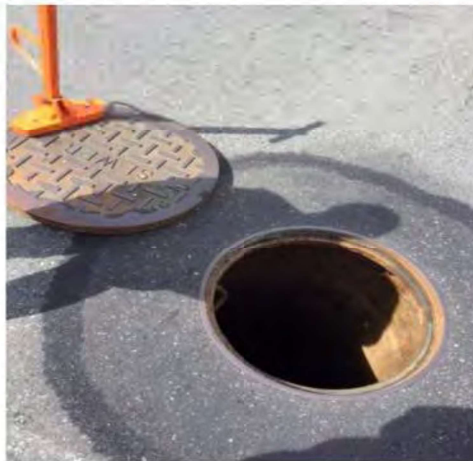
Type of Manhole: SANITARY SEWER (GRAVITY)

Inspection Status: SURFACE INSPECTION: LEVEL 1 (NO MANHOLE ENTRY)

Manhole Location and Configuration



Inspection Photos



**Manhole Inspection Form****Manhole Information**

Inspector: BM AK
Date: 9/8/2022
Weather: DRY (NO PRECIPITATION DURING SURVEY)
Street: ROUTE 27
Location: PRIMARY ARTERIAL ROADS

GIS MH No: 1-20
Type of Manhole: SANITARY SEWER (GRAVITY)
Inspection Status: SURFACE INSPECTION: LEVEL 1 (NO MANHOLE ENTRY)
Rim to Invert (ft): 14
Grade to Rim (in): 0

Manhole Infiltration

Surcharge: NO
Infiltration: YES

Number of Holes: 0
Metal Riser: NO

Manhole Characteristics

Location in MH	Mtrl. Code	Infil. Code	Cond. Code	Repair Codes	Comments
Frame/Cover	CAST IRON	NONE	SOUND	NONE	
Chimney	BRICK	NONE	SOUND	NONE	
Cone	CONCRETE (PRECAST)	NONE	SOUND	NONE	
Wall	CONCRETE (PRECAST)	WEEPER	DEFECTIVE	SEAL_REPOINT	MINOR INFILTRATION AT BOTTOM OF WALL
Bench	BRICK	NONE	SOUND	NONE	
Invert/Channel	BRICK	NONE	SOUND	NONE	

Invert Information

Pipe	Direction	Rim to Invert	Pipe Dia. (in)	Pipe Mtrl. Code	Clock Position*	Comments
Pipe 1	OUT	14	24	REINFORCED CONCRETE PIPE	06:00	
Pipe 2	IN	14	24	REINFORCED CONCRETE PIPE	12:00	
Pipe 3						
Pipe 4						
Pipe 5						

Additional
Comments



CDM
Smith

Town of Stonington, Connecticut

Manhole Inspection Form

Manhole Information

Inspector: BH AND TT

Date: 4/18/2022

Weather: DRY (NO PRECIPITATION DURING SURVEY)

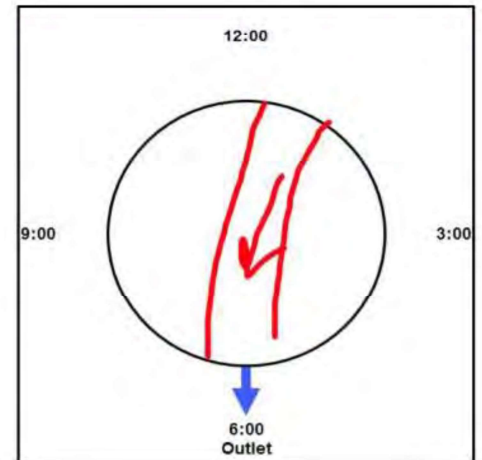
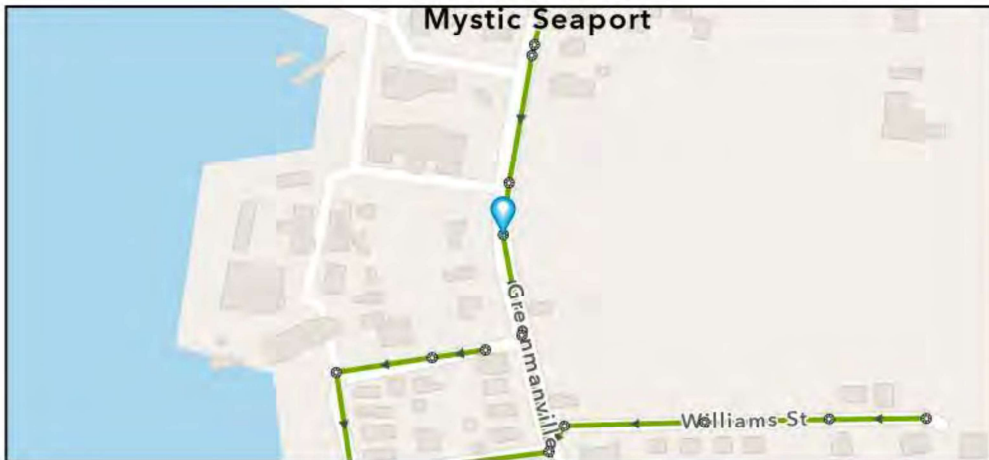
Street: ROUTE 27

GIS MH No: 1-21

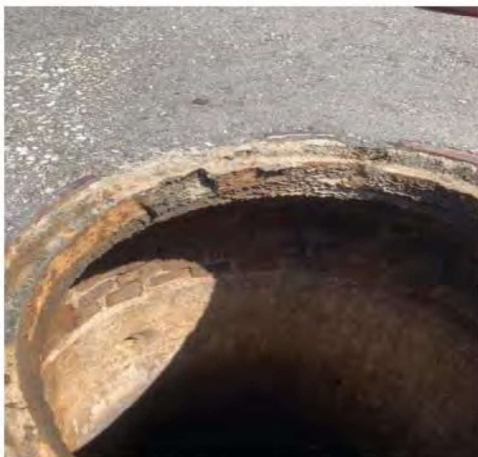
Type of Manhole: SANITARY SEWER (GRAVITY)

Inspection Status: SURFACE INSPECTION: LEVEL 1 (NO MANHOLE ENTRY)

Manhole Location and Configuration



Inspection Photos



**Manhole Inspection Form****Manhole Information****Inspector:** BH AND TT**Date:** 4/18/2022**Weather:** DRY (NO PRECIPITATION DURING SURVEY)**Street:** ROUTE 27**Location:** PRIMARY ARTERIAL ROADS**GIS MH No:** 1-21**Type of Manhole:** SANITARY SEWER (GRAVITY)**Inspection Status:** SURFACE INSPECTION: LEVEL 1 (NO MANHOLE ENTRY)**Rim to Invert (ft):** 10.5**Grade to Rim (in):** 0**Manhole Infiltration****Surcharge:** NO**Infiltration:** YES**Number of Holes:** 0**Metal Riser:** YES**Manhole Characteristics**

Location in MH	Mtrl. Code	Infil. Code	Cond. Code	Repair Codes	Comments
Frame/Cover	CAST IRON	NONE	BROKEN	REPLACE FRAME AND COVER	
Chimney	BRICK	STAINS	SOUND	LINE MANHOLE	
Cone	OTHER (DESCRIBE IN DETAILS)	NONE	SOUND	NONE	NO CONE
Wall	CONCRETE (PRECAST)	STAINS	SOUND	LINE_MANHOLE	
Bench	BRICK	NONE	SOUND	NONE	
Invert/Channel	BRICK	NONE	SOUND	NONE	

Invert Information

Pipe	Direction	Rim to Invert	Pipe Dia. (in)	Pipe Mtrl. Code	Clock Position*	Comments
Pipe 1	OUT	10.5	24	REINFORCED CONCRETE PIPE	06:00	
Pipe 2	IN	10.5	24	REINFORCED CONCRETE PIPE	01:00	
Pipe 3						
Pipe 4						
Pipe 5						

**Additional
Comments**



CDM
Smith

Town of Stonington, Connecticut

Manhole Inspection Form

Manhole Information

Inspector: BH AND TT

Date: 4/18/2022

Weather: DRY (NO PRECIPITATION DURING SURVEY)

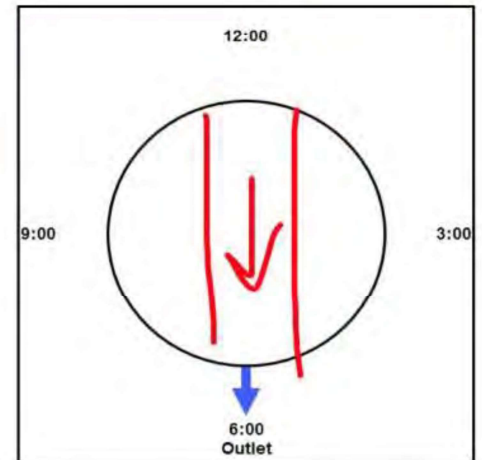
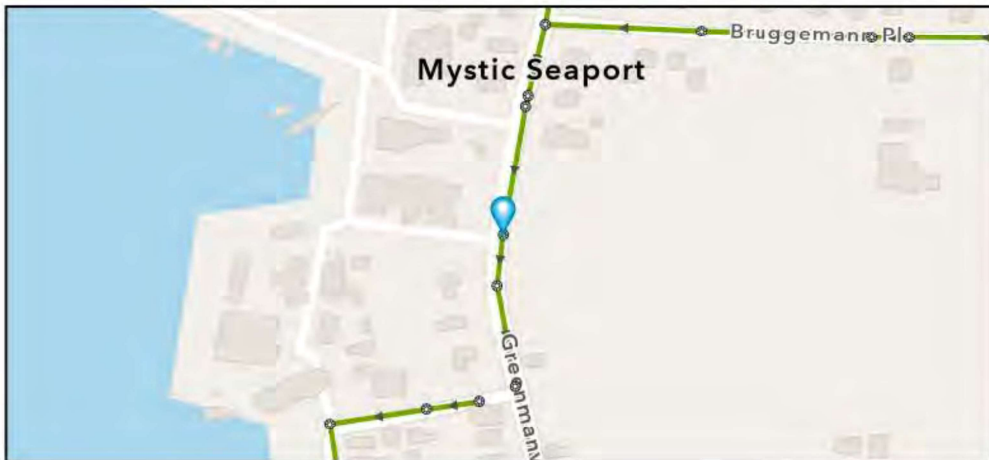
Street: ROUTE 27

GIS MH No: 1-22

Type of Manhole: SANITARY SEWER (GRAVITY)

Inspection Status: SURFACE INSPECTION: LEVEL 1 (NO MANHOLE ENTRY)

Manhole Location and Configuration



Inspection Photos





Town of Stonington, Connecticut

Manhole Inspection Form

Manhole Information

Inspector: BH AND TT

Date: 4/18/2022

Weather: DRY (NO PRECIPITATION DURING SURVEY)

Street: ROUTE 27

Location: PRIMARY ARTERIAL ROADS

GIS MH No: 1-22

Type of Manhole: SANITARY SEWER (GRAVITY)

Inspection Status: SURFACE INSPECTION: LEVEL 1 (NO MANHOLE ENTRY)

Rim to Invert (ft): 9.25

Grade to Rim (in): 0

Manhole Infiltration

Surcharge: NO

Infiltration: NO

Number of Holes: 0

Metal Riser: YES

Manhole Characteristics

Location in MH	Mtrl. Code	Infil. Code	Cond. Code	Repair Codes	Comments
Frame/Cover	CAST IRON	NONE	SOUND	NONE	
Chimney	BRICK	NONE	SOUND	NONE	
Cone	OTHER (DESCRIBE IN DETAILS)	NONE	SOUND	NONE	NO CONE
Wall	CONCRETE (PRECAST)	NONE	SOUND	NONE	
Bench	BRICK	NONE	SOUND	NONE	
Invert/Channel	BRICK	NONE	SOUND	NONE	

Invert Information

Pipe	Direction	Rim to Invert	Pipe Dia. (in)	Pipe Mtrl. Code	Clock Position*	Comments
Pipe 1	OUT	9.25	24	REINFORCED CONCRETE PIPE	06:00	
Pipe 2	IN	9.25	24	REINFORCED CONCRETE PIPE	12:00	
Pipe 3						
Pipe 4						
Pipe 5						

Additional
Comments

*6:00 is outlet