



CDM
Smith

Town of Stonington, Connecticut

Manhole Inspection Form

Manhole Information

Inspector: BH AND TT

Date: 4/18/2022

Weather: DRY (NO PRECIPITATION DURING SURVEY)

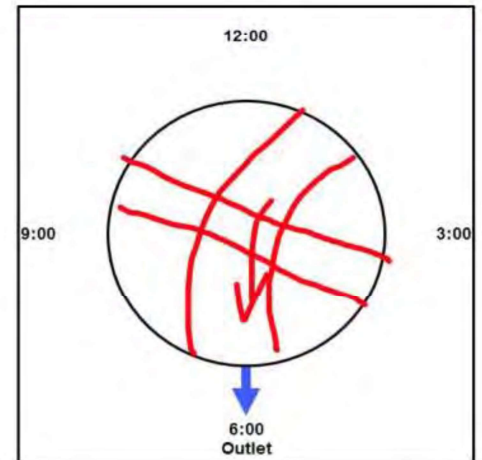
Street: ROUTE 27

GIS MH No: 1-23

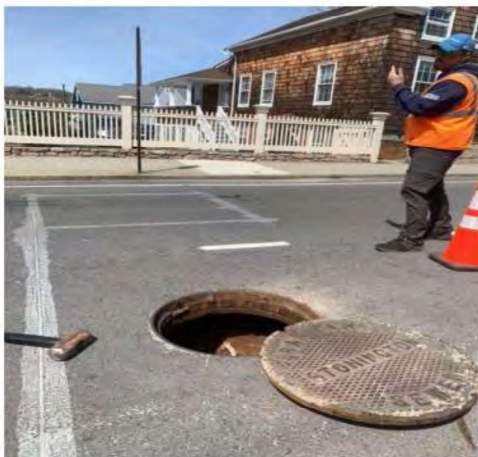
Type of Manhole: SANITARY SEWER (GRAVITY)

Inspection Status: SURFACE INSPECTION: LEVEL 1 (NO MANHOLE ENTRY)

Manhole Location and Configuration



Inspection Photos



**Manhole Inspection Form****Manhole Information****Inspector:** BH AND TT**Date:** 4/18/2022**Weather:** DRY (NO PRECIPITATION DURING SURVEY)**Street:** ROUTE 27**Location:** PRIMARY ARTERIAL ROADS**GIS MH No:** 1-23**Type of Manhole:** SANITARY SEWER (GRAVITY)**Inspection Status:** SURFACE INSPECTION: LEVEL 1 (NO MANHOLE ENTRY)**Rim to Invert (ft):** 10.5**Grade to Rim (in):** 0**Manhole Infiltration****Surcharge:** NO**Infiltration:** YES**Number of Holes:** 0**Metal Riser:** YES**Manhole Characteristics**

Location in MH	Mtrl. Code	Infil. Code	Cond. Code	Repair Codes	Comments
Frame/Cover	CAST IRON	NONE	SOUND	NONE	
Chimney	BRICK	WEEPER	DEFECTIVE	LINE MANHOLE	
Cone	OTHER (DESCRIBE IN DETAILS)	NONE	SOUND	NONE	NO CONE
Wall	CONCRETE (PRECAST)	NONE	SOUND	NONE	
Bench	BRICK	NONE	SOUND	NONE	
Invert/Channel	BRICK	NONE	SOUND	NONE	

Invert Information

Pipe	Direction	Rim to Invert	Pipe Dia. (in)	Pipe Mtrl. Code	Clock Position*	Comments
Pipe 1	OUT	10.5	24	REINFORCED CONCRETE PIPE	06:00	
Pipe 2		10	6	REINFORCED CONCRETE PIPE	08:00	PIPE GOES FROM 08:00 TO 05:00 THROUGH MANHOLE. DOES NOT DROP INTO MANHOLE, PIPE FLOW
Pipe 3	IN	10.5	24	REINFORCED CONCRETE PIPE	02:00	
Pipe 4						
Pipe 5						

**Additional
Comments**



Manhole Inspection Form

Manhole Information

Inspector: BH AND TT

Date: 4/18/2022

Weather: DRY (NO PRECIPITATION DURING SURVEY)

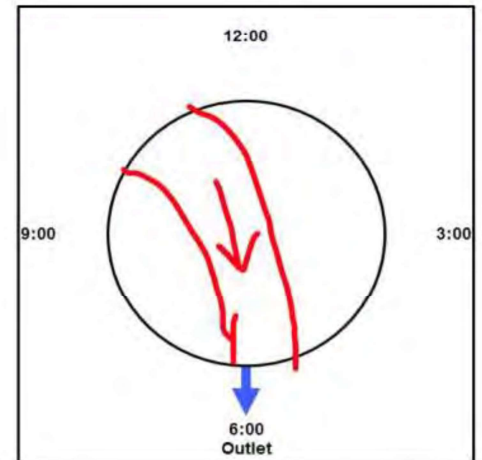
Street: ROUTE 27-2 MY

GIS MH No: 1-23A

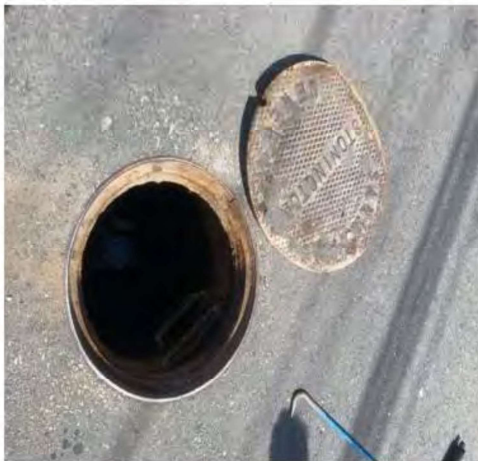
Type of Manhole: SANITARY SEWER (GRAVITY)

Inspection Status: SURFACE INSPECTION: LEVEL 1 (NO MANHOLE ENTRY)

Manhole Location and Configuration



Inspection Photos



**Manhole Inspection Form****Manhole Information****Inspector:** BH AND TT**Date:** 4/18/2022**Weather:** DRY (NO PRECIPITATION DURING SURVEY)**Street:** ROUTE 27--2 MY**Location:** PRIMARY ARTERIAL ROADS**GIS MH No:** 1-23A**Type of Manhole:** SANITARY SEWER (GRAVITY)**Inspection Status:** SURFACE INSPECTION: LEVEL 1 (NO MANHOLE ENTRY)**Rim to Invert (ft):** 10.75**Grade to Rim (in):** 0**Manhole Infiltration****Surcharge:** NO**Infiltration:** YES**Number of Holes:** 0**Metal Riser:** YES**Manhole Characteristics**

Location in MH	Mtrl. Code	Infil. Code	Cond. Code	Repair Codes	Comments
Frame/Cover	CAST IRON	NONE	SOUND	REPLACE FRAME AND COVER	REPLACE COVER
Chimney	BRICK	STAINS	SOUND	NONE	
Cone	OTHER (DESCRIBE IN DETAILS)	NONE	SOUND	NONE	NO CONE.
Wall	CONCRETE (PRECAST)	NONE	SOUND	NONE	
Bench	BRICK	NONE	SOUND	NONE	
Invert/Channel	BRICK	NONE	SOUND	NONE	

Invert Information

Pipe	Direction	Rim to Invert	Pipe Dia. (in)	Pipe Mtrl. Code	Clock Position*	Comments
Pipe 1	OUT	10.75	30	REINFORCED CONCRETE PIPE	06:00	
Pipe 2	IN	10.75	30	REINFORCED CONCRETE PIPE	11:00	
Pipe 3						
Pipe 4						
Pipe 5						

**Additional
Comments**



CDM
Smith

Town of Stonington, Connecticut

Manhole Inspection Form

Manhole Information

Inspector: BH AND TT

Date: 4/18/2022

Weather: DRY (NO PRECIPITATION DURING SURVEY)

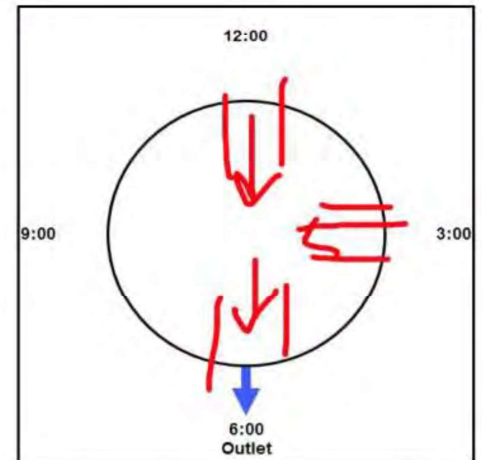
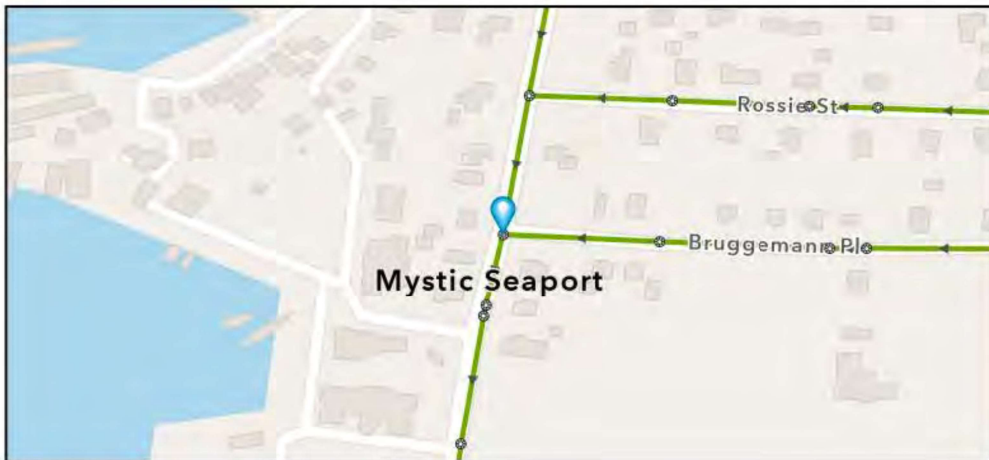
Street: ROUTE 27

GIS MH No: 1-24

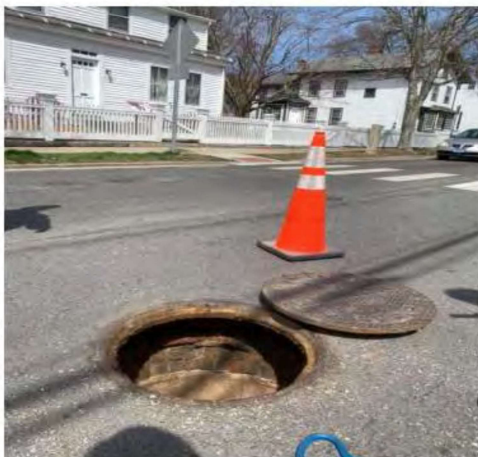
Type of Manhole: SANITARY SEWER (GRAVITY)

Inspection Status: SURFACE INSPECTION: LEVEL 1 (NO MANHOLE ENTRY)

Manhole Location and Configuration



Inspection Photos



**Manhole Inspection Form****Manhole Information****Inspector:** BH AND TT**Date:** 4/18/2022**Weather:** DRY (NO PRECIPITATION DURING SURVEY)**Street:** ROUTE 27**Location:** PRIMARY ARTERIAL ROADS**GIS MH No:** 1-24**Type of Manhole:** SANITARY SEWER (GRAVITY)**Inspection Status:** SURFACE INSPECTION: LEVEL 1 (NO MANHOLE ENTRY)**Rim to Invert (ft):** 13.25**Grade to Rim (in):** 0**Manhole Infiltration****Surcharge:** NO**Infiltration:** YES**Number of Holes:** 0**Metal Riser:** YES**Manhole Characteristics**

Location in MH	Mtrl. Code	Infil. Code	Cond. Code	Repair Codes	Comments
Frame/Cover	CAST IRON	NONE	SOUND	NONE	
Chimney	BRICK	WEEPER	DEFECTIVE	LINE MANHOLE	
Cone	NOT KNOWN	NONE	SOUND	NONE	NO CONE
Wall	CONCRETE (PRECAST)	NONE	SOUND	NONE	
Bench	BRICK	STAINS	SOUND	NONE	
Invert/Channel	BRICK	NONE	SOUND	NONE	

Invert Information

Pipe	Direction	Rim to Invert	Pipe Dia. (in)	Pipe Mtrl. Code	Clock Position*	Comments
Pipe 1	OUT	13.25	24	REINFORCED CONCRETE PIPE	06:00	
Pipe 2	IN	13.25	24	REINFORCED CONCRETE PIPE	12:00	
Pipe 3	IN	13.25	6	REINFORCED CONCRETE PIPE	03:00	
Pipe 4						
Pipe 5						

**Additional
Comments**



CDM
Smith

Town of Stonington, Connecticut

Manhole Inspection Form

Manhole Information

Inspector: BH AND TT

Date: 4/18/2022

Weather: DRY (NO PRECIPITATION DURING SURVEY)

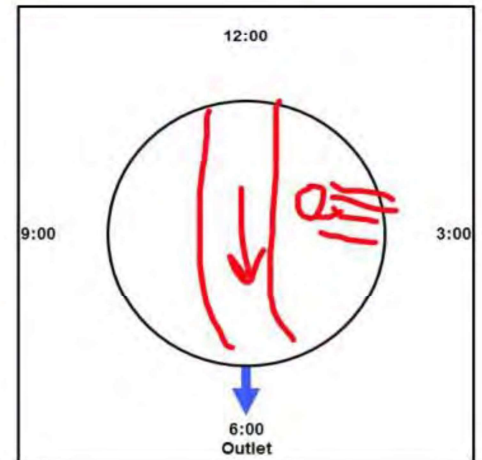
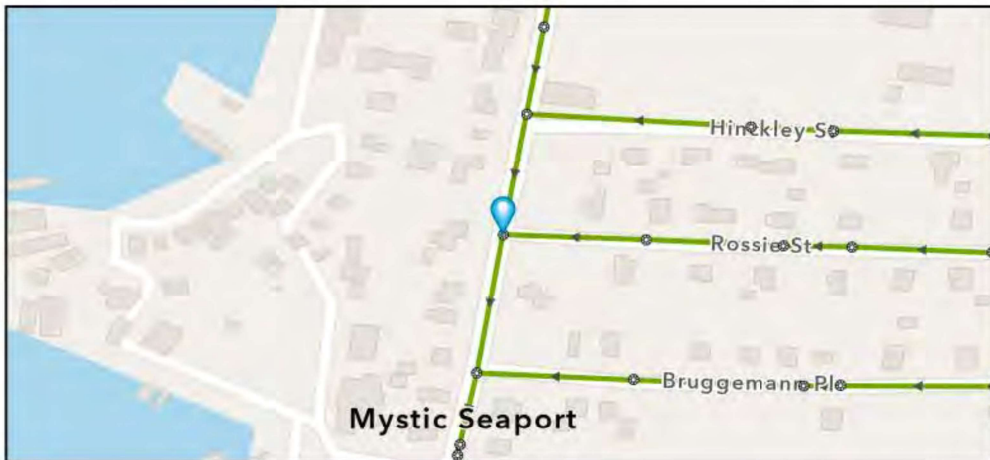
Street: ROUTE 27

GIS MH No: 1-25

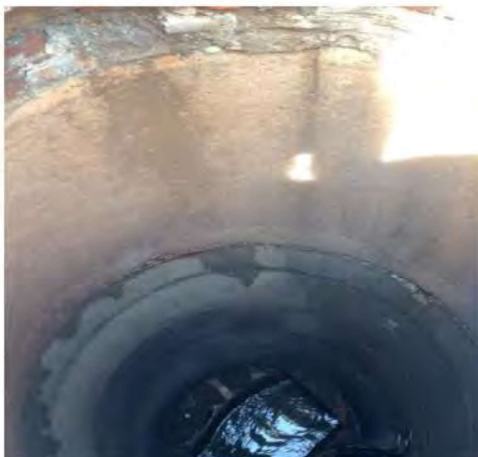
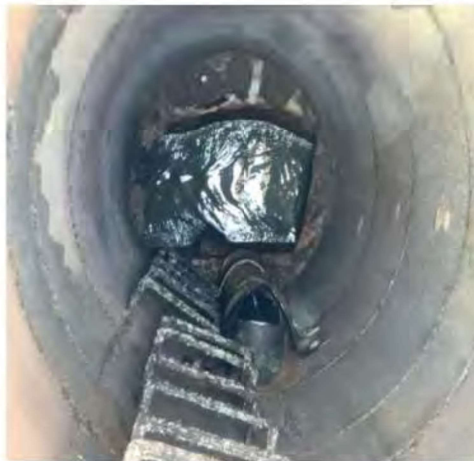
Type of Manhole: SANITARY SEWER (GRAVITY)

Inspection Status: SURFACE INSPECTION: LEVEL 1 (NO MANHOLE ENTRY)

Manhole Location and Configuration



Inspection Photos



**Manhole Inspection Form****Manhole Information****Inspector:** BH AND TT**Date:** 4/18/2022**Weather:** DRY (NO PRECIPITATION DURING SURVEY)**Street:** ROUTE 27**Location:** PRIMARY ARTERIAL ROADS**GIS MH No:** 1-25**Type of Manhole:** SANITARY SEWER (GRAVITY)**Inspection Status:** SURFACE INSPECTION: LEVEL 1 (NO MANHOLE ENTRY)**Rim to Invert (ft):** 17**Grade to Rim (in):** 0**Manhole Infiltration****Surcharge:** YES**Infiltration:** YES**Number of Holes:** 0**Metal Riser:** YES**Manhole Characteristics**

Location in MH	Mtrl. Code	Infil. Code	Cond. Code	Repair Codes	Comments
Frame/Cover	CAST IRON	NONE	SOUND	NONE	
Chimney	BRICK	STAINS	DEFECTIVE	LINE MANHOLE	
Cone	OTHER (DESCRIBE IN DETAILS)	NONE	SOUND	NONE	NO CONE
Wall	CONCRETE (PRECAST)	STAINS	DEFECTIVE	LINE_MANHOLE	
Bench	BRICK	NONE	SOUND	NONE	
Invert/Channel	BRICK	NONE	SOUND	NONE	

Invert Information

Pipe	Direction	Rim to Invert	Pipe Dia. (in)	Pipe Mtrl. Code	Clock Position*	Comments
Pipe 1	OUT	17	24	REINFORCED CONCRETE PIPE	06:00	
Pipe 2	IN	17	24	REINFORCED CONCRETE PIPE	11:00	
Pipe 3	IN	10.5	6	REINFORCED CONCRETE PIPE	04:00	DROP LINE
Pipe 4						
Pipe 5						

**Additional
Comments**



CDM
Smith

Town of Stonington, Connecticut

Manhole Inspection Form

Manhole Information

Inspector: BH AND TT

Date: 4/18/2022

Weather: DRY (NO PRECIPITATION DURING SURVEY)

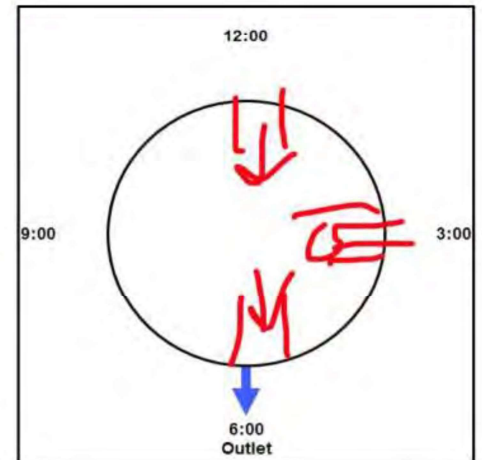
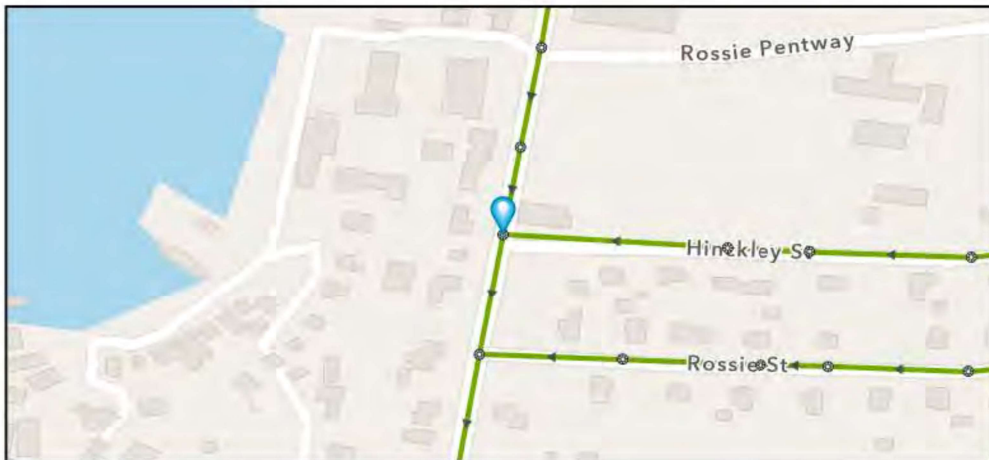
Street: ROUTE 27

GIS MH No: 1-26

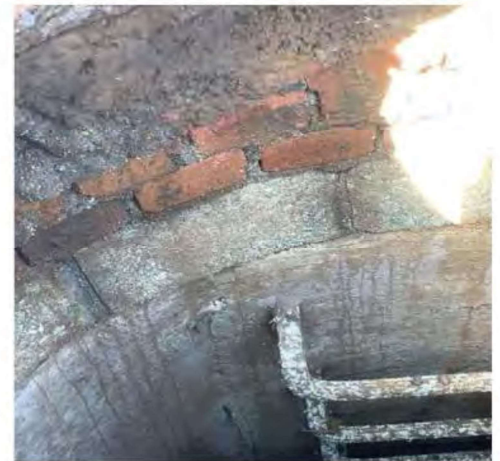
Type of Manhole: SANITARY SEWER (GRAVITY)

Inspection Status: SURFACE INSPECTION: LEVEL 1 (NO MANHOLE ENTRY)

Manhole Location and Configuration



Inspection Photos



**Manhole Inspection Form****Manhole Information****Inspector:** BH AND TT**Date:** 4/18/2022**Weather:** DRY (NO PRECIPITATION DURING SURVEY)**Street:** ROUTE 27**Location:** PRIMARY ARTERIAL ROADS**GIS MH No:** 1-26**Type of Manhole:** SANITARY SEWER (GRAVITY)**Inspection Status:** SURFACE INSPECTION: LEVEL 1 (NO MANHOLE ENTRY)**Rim to Invert (ft):** 15.5**Grade to Rim (in):** 0**Manhole Infiltration****Surcharge:** NO**Infiltration:** YES**Number of Holes:** 0**Metal Riser:** YES**Manhole Characteristics**

Location in MH	Mtrl. Code	Infil. Code	Cond. Code	Repair Codes	Comments
Frame/Cover	CAST IRON	NONE	SOUND	NONE	
Chimney	BRICK	WEEPER	DEFECTIVE	LINE MANHOLE	BRICK AND CONCRETE BLOCK. INFILTRATION RIGHT BELOW
Cone	OTHER (DESCRIBE IN DETAILS)	NONE	SOUND	NONE	CONCRETE BLOCKS NO CONE
Wall	CONCRETE (PRECAST)	NONE	SOUND	NONE	
Bench	BRICK	NONE	SOUND	NONE	
Invert/Channel	BRICK	NONE	SOUND	NONE	

Invert Information

Pipe	Direction	Rim to Invert	Pipe Dia. (in)	Pipe Mtrl. Code	Clock Position*	Comments
Pipe 1	OUT	15.5	24	REINFORCED CONCRETE PIPE	06:00	
Pipe 2	IN	15.5	24	REINFORCED CONCRETE PIPE	12:00	
Pipe 3	IN	10	6	REINFORCED CONCRETE PIPE	03:00	
Pipe 4						
Pipe 5						

**Additional
Comments**



CDM
Smith

Town of Stonington, Connecticut

Manhole Inspection Form

Manhole Information

Inspector: BH AND TT

Date: 4/18/2022

Weather: DRY (NO PRECIPITATION DURING SURVEY)

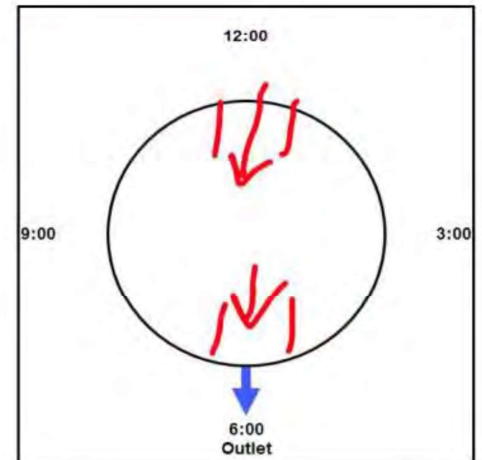
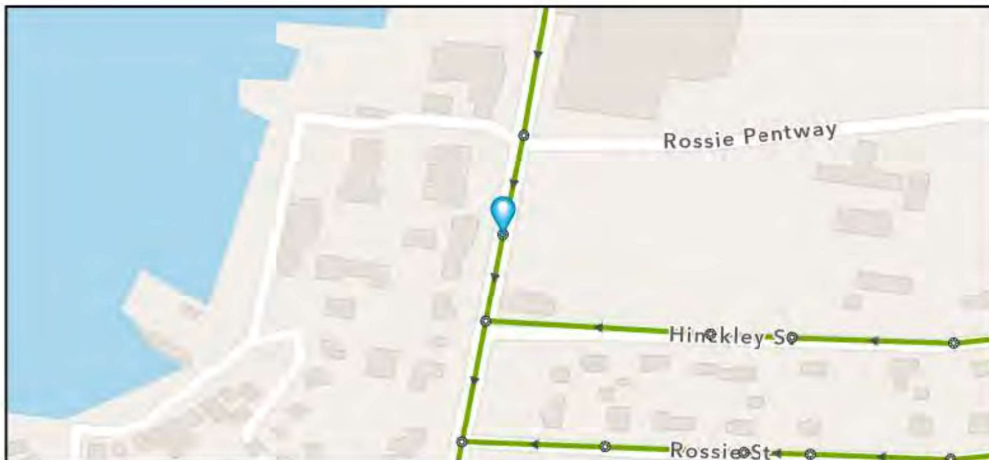
Street: ROUTE 27

GIS MH No: 1-27

Type of Manhole: SANITARY SEWER (GRAVITY)

Inspection Status: SURFACE INSPECTION: LEVEL 1 (NO MANHOLE ENTRY)

Manhole Location and Configuration



Inspection Photos



**Manhole Inspection Form****Manhole Information****Inspector:** BH AND TT**Date:** 4/18/2022**Weather:** DRY (NO PRECIPITATION DURING SURVEY)**Street:** ROUTE 27**Location:** PRIMARY ARTERIAL ROADS**GIS MH No:** 1-27**Type of Manhole:** SANITARY SEWER (GRAVITY)**Inspection Status:** SURFACE INSPECTION: LEVEL 1 (NO MANHOLE ENTRY)**Rim to Invert (ft):** 10.5**Grade to Rim (in):** 0**Manhole Infiltration****Surcharge:** NO**Number of Holes:** 0**Infiltration:** NO**Metal Riser:** YES**Manhole Characteristics**

Location in MH	Mtrl. Code	Infil. Code	Cond. Code	Repair Codes	Comments
Frame/Cover	CAST IRON	NONE	SOUND	NONE	
Chimney	BRICK	NONE	SOUND	NONE	BRICK AND CONCRETE BLOCK
Cone	OTHER (DESCRIBE IN DETAILS)	NONE	SOUND	NONE	NO CONE
Wall	CONCRETE (PRECAST)	NONE	SOUND	NONE	
Bench	BRICK	NONE	SOUND	NONE	
Invert/Channel	BRICK	NONE	SOUND	NONE	

Invert Information

Pipe	Direction	Rim to Invert	Pipe Dia. (in)	Pipe Mtrl. Code	Clock Position*	Comments
Pipe 1	OUT	10.5	24	REINFORCED CONCRETE PIPE	06:00	
Pipe 2	IN	10.5	24	REINFORCED CONCRETE PIPE	12:00	
Pipe 3						
Pipe 4						
Pipe 5						

**Additional
Comments**



CDM
Smith

Town of Stonington, Connecticut

Manhole Inspection Form

Manhole Information

Inspector: BH AND TT

Date: 4/18/2022

Weather: DRY (NO PRECIPITATION DURING SURVEY)

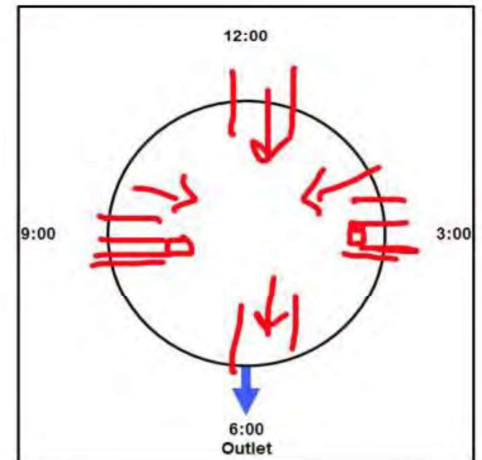
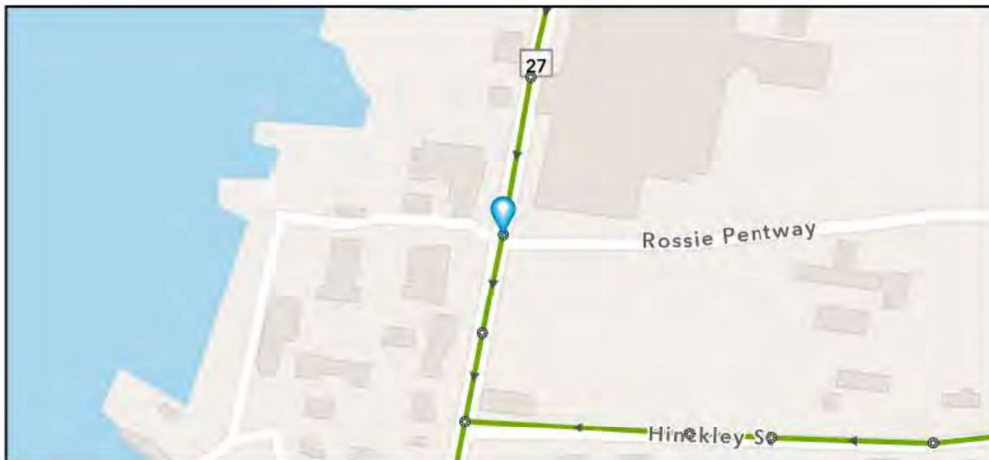
Street: ROUTE 27

GIS MH No: 1-28

Type of Manhole: SANITARY SEWER (GRAVITY)

Inspection Status: SURFACE INSPECTION: LEVEL 1 (NO MANHOLE ENTRY)

Manhole Location and Configuration



Inspection Photos



**Manhole Inspection Form****Manhole Information****Inspector:** BH AND TT**Date:** 4/18/2022**Weather:** DRY (NO PRECIPITATION DURING SURVEY)**Street:** ROUTE 27**Location:** PRIMARY ARTERIAL ROADS**GIS MH No:** 1-28**Type of Manhole:** SANITARY SEWER (GRAVITY)**Inspection Status:** SURFACE INSPECTION: LEVEL 1 (NO MANHOLE ENTRY)**Rim to Invert (ft):** 9.25**Grade to Rim (in):** 0**Manhole Infiltration****Surcharge:** NO**Infiltration:** NO**Number of Holes:** 0**Metal Riser:** YES**Manhole Characteristics**

Location in MH	Mtrl. Code	Infil. Code	Cond. Code	Repair Codes	Comments
Frame/Cover	CAST IRON	NONE	BROKEN	REPLACE FRAME AND COVER	
Chimney	BRICK	NONE	DEFECTIVE	LINE MANHOLE	CORROSION
Cone	OTHER (DESCRIBE IN DETAILS)	NONE	SOUND	NONE	NO CONE
Wall	CONCRETE (PRECAST)	NONE	DEFECTIVE	LINE_MANHOLE	CORROSION
Bench	BRICK	NONE	SOUND	NONE	
Invert/Channel	BRICK	NONE	SOUND	NONE	

Invert Information

Pipe	Direction	Rim to Invert	Pipe Dia. (in)	Pipe Mtrl. Code	Clock Position*	Comments
Pipe 1	OUT	9.25	24	REINFORCED CONCRETE PIPE	06:00	
Pipe 2	IN	6	8	REINFORCED CONCRETE PIPE	09:00	DROP LINE
Pipe 3	IN	9.25	24	REINFORCED CONCRETE PIPE	12:00	
Pipe 4	IN	6	8	REINFORCED CONCRETE PIPE	04:00	
Pipe 5						

**Additional
Comments**



CDM
Smith

Town of Stonington, Connecticut

Manhole Inspection Form

Manhole Information

Inspector: BH AND TT

Date: 4/18/2022

Weather: DRY (NO PRECIPITATION DURING SURVEY)

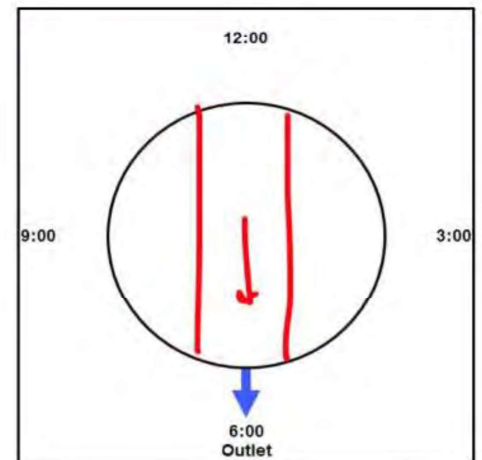
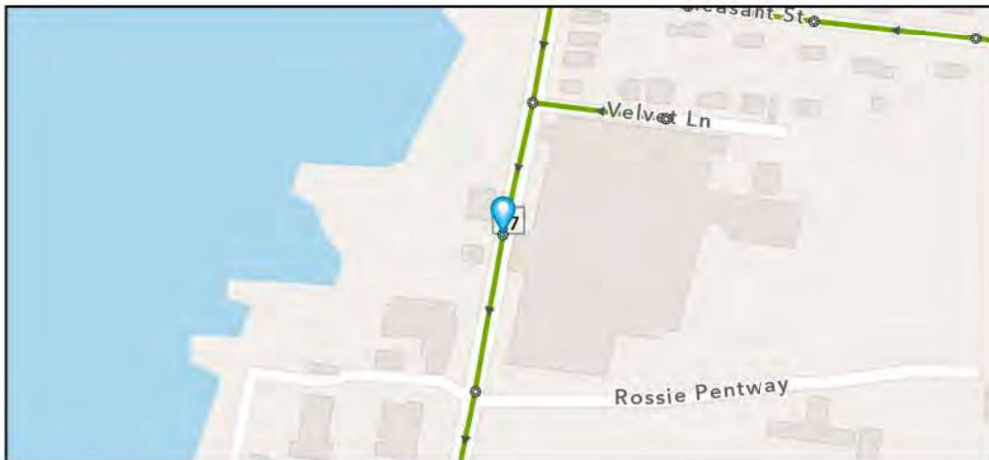
Street: ROUTE 27

GIS MH No: 1-29

Type of Manhole: SANITARY SEWER (GRAVITY)

Inspection Status: SURFACE INSPECTION: LEVEL 1 (NO MANHOLE ENTRY)

Manhole Location and Configuration



Inspection Photos



**Manhole Inspection Form****Manhole Information****Inspector:** BH AND TT**Date:** 4/18/2022**Weather:** DRY (NO PRECIPITATION DURING SURVEY)**Street:** ROUTE 27**Location:** PRIMARY ARTERIAL ROADS**GIS MH No:** 1-29**Type of Manhole:** SANITARY SEWER (GRAVITY)**Inspection Status:** SURFACE INSPECTION: LEVEL 1 (NO MANHOLE ENTRY)**Rim to Invert (ft):** 12.5**Grade to Rim (in):** 0**Manhole Infiltration****Surcharge:** NO**Infiltration:** NO**Number of Holes:** 0**Metal Riser:** YES**Manhole Characteristics**

Location in MH	Mtrl. Code	Infil. Code	Cond. Code	Repair Codes	Comments
Frame/Cover	CAST IRON	NONE	SOUND	NONE	
Chimney	BRICK	NONE	SOUND	NONE	
Cone	OTHER (DESCRIBE IN DETAILS)	NONE	SOUND	OTHER	NO CONE
Wall	CONCRETE (PRECAST)	NONE	SOUND	NONE	
Bench	BRICK	NONE	SOUND	NONE	
Invert/Channel	BRICK	NONE	SOUND	NONE	

Invert Information

Pipe	Direction	Rim to Invert	Pipe Dia. (in)	Pipe Mtrl. Code	Clock Position*	Comments
Pipe 1	OUT	12.5	24	REINFORCED CONCRETE PIPE	06:00	
Pipe 2	IN	12.5	24	REINFORCED CONCRETE PIPE	12:00	
Pipe 3						
Pipe 4						
Pipe 5						

**Additional
Comments**



Manhole Inspection Form

Manhole Information

Inspector: BH AND TT

Date: 4/18/2022

Weather: DRY (NO PRECIPITATION DURING SURVEY)

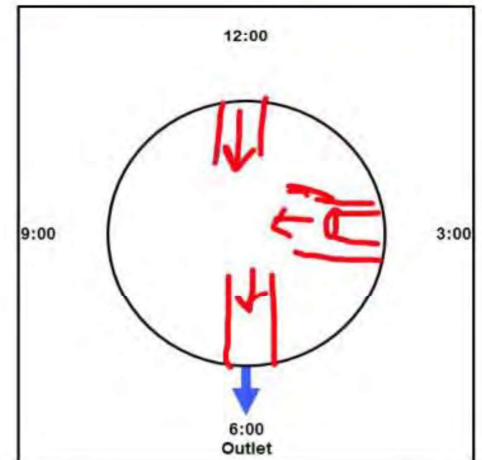
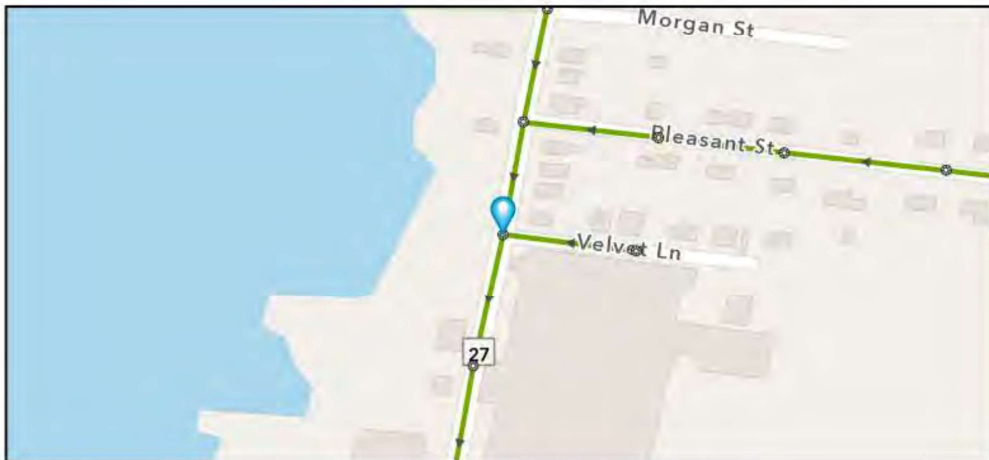
Street: ROUTE 27

GIS MH No: 1-30

Type of Manhole: SANITARY SEWER (GRAVITY)

Inspection Status: SURFACE INSPECTION: LEVEL 1 (NO MANHOLE ENTRY)

Manhole Location and Configuration



Inspection Photos



**Manhole Inspection Form****Manhole Information****Inspector:** BH AND TT**Date:** 4/18/2022**Weather:** DRY (NO PRECIPITATION DURING SURVEY)**Street:** ROUTE 27**Location:** PRIMARY ARTERIAL ROADS**GIS MH No:** 1-30**Type of Manhole:** SANITARY SEWER (GRAVITY)**Inspection Status:** SURFACE INSPECTION: LEVEL 1 (NO MANHOLE ENTRY)**Rim to Invert (ft):** 11**Grade to Rim (in):** 0**Manhole Infiltration****Surcharge:** NO**Infiltration:** NO**Number of Holes:** 0**Metal Riser:** YES**Manhole Characteristics**

Location in MH	Mtrl. Code	Infil. Code	Cond. Code	Repair Codes	Comments
Frame/Cover	CAST IRON	NONE	SOUND	NONE	
Chimney	BRICK	NONE	SOUND	NONE	
Cone	OTHER (DESCRIBE IN DETAILS)	NONE	SOUND	NONE	NO CONE
Wall	CONCRETE (PRECAST)	NONE	SOUND	NONE	
Bench	BRICK	NONE	SOUND	NONE	
Invert/Channel	BRICK	NONE	SOUND	NONE	

Invert Information

Pipe	Direction	Rim to Invert	Pipe Dia. (in)	Pipe Mtrl. Code	Clock Position*	Comments
Pipe 1	OUT	11	24	REINFORCED CONCRETE PIPE	06:00	
Pipe 2	IN	11	24	REINFORCED CONCRETE PIPE	12:00	
Pipe 3	IN	8	8	REINFORCED CONCRETE PIPE	03:30	DROP PIPE
Pipe 4						
Pipe 5						

**Additional
Comments**



Manhole Inspection Form

Manhole Information

Inspector: BM AND JC

Date: 5/4/2022

Weather: DRY (NO PRECIPITATION DURING SURVEY)

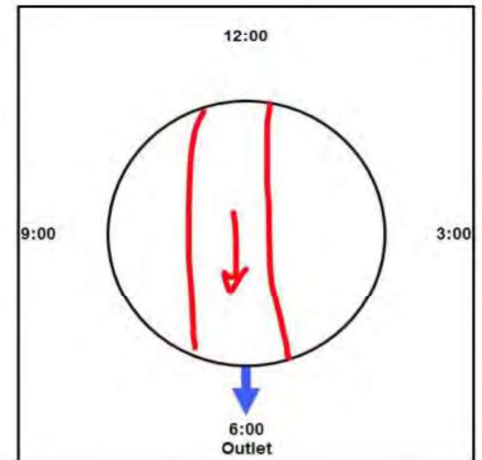
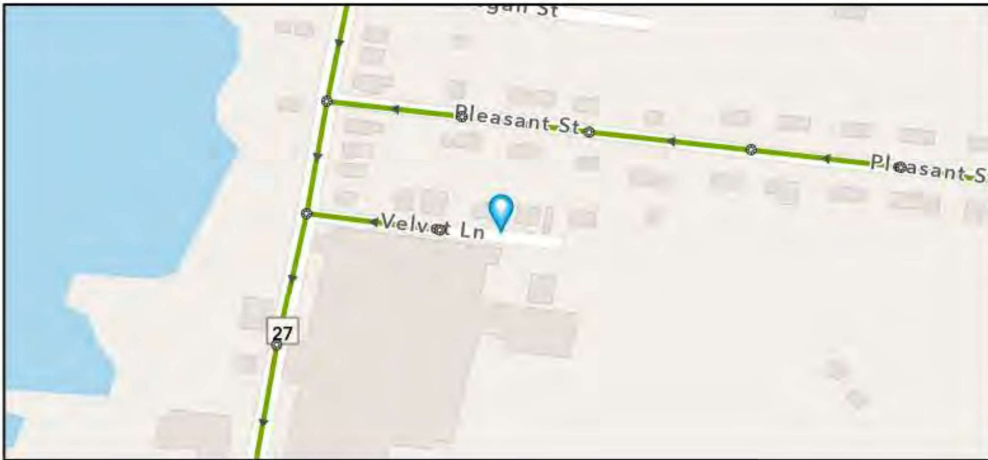
Street: 7 VELVET LANE

GIS MH No: 1-30A

Type of Manhole: SANITARY SEWER (GRAVITY)

Inspection Status: SURFACE INSPECTION: LEVEL 1 (NO MANHOLE ENTRY)

Manhole Location and Configuration



Inspection Photos



**Manhole Inspection Form****Manhole Information****Inspector:** BM AND JC**Date:** 5/4/2022**Weather:** DRY (NO PRECIPITATION DURING SURVEY)**GIS MH No:** 1-30A**Type of Manhole:** SANITARY SEWER (GRAVITY)**Inspection Status:** SURFACE INSPECTION: LEVEL 1 (NO MANHOLE ENTRY)**Street:** 7 VELVET LANE**Location:** LOCAL RURAL STREETS**Rim to Invert (ft):** 5.25**Grade to Rim (in):** 0**Manhole Infiltration****Surcharge:** NO**Number of Holes:** 0**Infiltration:** NO**Metal Riser:** NO**Manhole Characteristics**

Location in MH	Mtrl. Code	Infil. Code	Cond. Code	Repair Codes	Comments
Frame/Cover	CAST IRON	NONE	SOUND	NONE	
Chimney	CONCRETE BLOCK	NONE	SOUND	NONE	
Cone	CONCRETE (PRECAST)	NONE	SOUND	NONE	
Wall	CONCRETE (PRECAST)	NONE	SOUND	NONE	
Bench	CONCRETE (PRECAST)	NONE	SOUND	NONE	
Invert/Channel	POLY VINYL CHLORIDE	NONE	SOUND	NONE	

Invert Information

Pipe	Direction	Rim to Invert	Pipe Dia. (in)	Pipe Mtrl. Code	Clock Position*	Comments
Pipe 1	OUT	5.25	8	POLY VINYL CHLORIDE	06:00	
Pipe 2	IN	5.25	8	POLY VINYL CHLORIDE	12:00	
Pipe 3						
Pipe 4						
Pipe 5						

**Additional
Comments**



CDM
Smith

Town of Stonington, Connecticut

Manhole Inspection Form

Manhole Information

Inspector: BM AK

Date: 9/8/2022

Weather: DRY (NO PRECIPITATION DURING SURVEY)

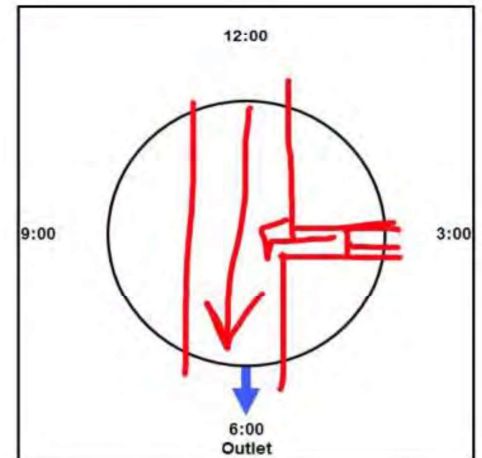
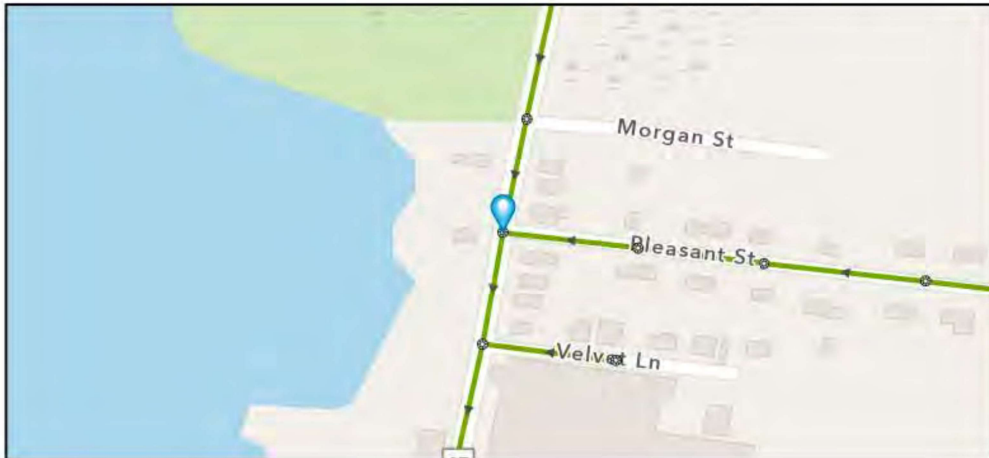
Street: 140 ROUTE 27

GIS MH No: 1-31

Type of Manhole: SANITARY SEWER (GRAVITY)

Inspection Status: SURFACE INSPECTION: LEVEL 1 (NO MANHOLE ENTRY)

Manhole Location and Configuration



Inspection Photos



**Manhole Inspection Form****Manhole Information**

Inspector: BM AK
Date: 9/8/2022
Weather: DRY (NO PRECIPITATION DURING SURVEY)
Street: 140 ROUTE 27
Location: PRIMARY ARTERIAL ROADS

GIS MH No: 1-31
Type of Manhole: SANITARY SEWER (GRAVITY)
Inspection Status: SURFACE INSPECTION: LEVEL 1 (NO MANHOLE ENTRY)
Rim to Invert (ft): 10.25
Grade to Rim (in): 0

Manhole Infiltration

Surcharge: NO
Infiltration: YES

Number of Holes: 0
Metal Riser: YES

Manhole Characteristics

Location in MH	Mtrl. Code	Infil. Code	Cond. Code	Repair Codes	Comments
Frame/Cover	CAST IRON	NONE	BROKEN	REPLACE FRAME AND COVER	
Chimney	BRICK	STAINS	SOUND	NONE	
Cone	OTHER (DESCRIBE IN DETAILS)	NONE	SOUND	NONE	NO CONE
Wall	CONCRETE (PRECAST)	WEEPER	DEFECTIVE	LINE_MANHOLE	
Bench	BRICK	NONE	SOUND	NONE	
Invert/Channel	BRICK	NONE	SOUND	NONE	

Invert Information

Pipe	Direction	Rim to Invert	Pipe Dia. (in)	Pipe Mtrl. Code	Clock Position*	Comments
Pipe 1	OUT	10.25	18	REINFORCED CONCRETE PIPE	06:00	
Pipe 2	IN	10	18	REINFORCED CONCRETE PIPE	12:00	
Pipe 3	IN	7.75	8	CLAY LINED CONCRETE PIPE	03:00	TOP OF DROP
Pipe 4	IN	9.5	8	CLAY LINED CONCRETE PIPE	03:00	BOTTOM OF DROP
Pipe 5						

**Additional
Comments**



Manhole Inspection Form

Manhole Information

Inspector: BM AK

Date: 9/8/2022

Weather: DRY (NO PRECIPITATION DURING SURVEY)

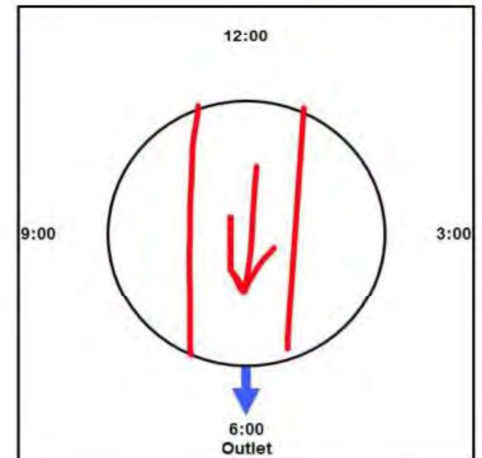
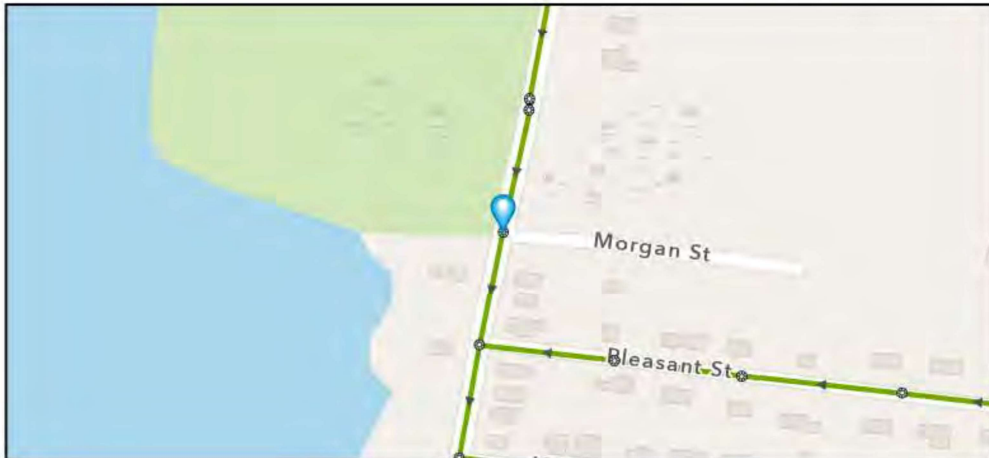
Street: ROUTE 27

GIS MH No: 1-32

Type of Manhole: SANITARY SEWER (GRAVITY)

Inspection Status: SURFACE INSPECTION: LEVEL 1 (NO MANHOLE ENTRY)

Manhole Location and Configuration



Inspection Photos





Town of Stonington, Connecticut

Manhole Inspection Form

Manhole Information

Inspector: BM AK
Date: 9/8/2022
Weather: DRY (NO PRECIPITATION DURING SURVEY)
Street: ROUTE 27
Location: PRIMARY ARTERIAL ROADS

GIS MH No: 1-32
Type of Manhole: SANITARY SEWER (GRAVITY)
Inspection Status: SURFACE INSPECTION: LEVEL 1 (NO MANHOLE ENTRY)
Rim to Invert (ft): 7.25
Grade to Rim (in): 0

Manhole Infiltration

Surcharge: NO
Infiltration: NO

Number of Holes: 0
Metal Riser: NO

Manhole Characteristics

Location in MH	Mtrl. Code	Infil. Code	Cond. Code	Repair Codes	Comments
Frame/Cover	CAST IRON	NONE	SOUND	NONE	
Chimney	BRICK	NONE	SOUND	NONE	
Cone	OTHER (DESCRIBE IN DETAILS)	NONE	SOUND	NONE	NO CONE
Wall	CONCRETE (PRECAST)	NONE	SOUND	NONE	
Bench	BRICK	NONE	SOUND	NONE	
Invert/Channel	BRICK	NONE	SOUND	NONE	

Invert Information

Pipe	Direction	Rim to Invert	Pipe Dia. (in)	Pipe Mtrl. Code	Clock Position*	Comments
Pipe 1	OUT	7.25	18	REINFORCED CONCRETE PIPE	06:00	
Pipe 2	IN	7.25	18	REINFORCED CONCRETE PIPE	12:00	
Pipe 3						
Pipe 4						
Pipe 5						

Additional
Comments



CDM
Smith

Town of Stonington, Connecticut

Manhole Inspection Form

Manhole Information

Inspector: BH AND TT

Date: 4/18/2022

Weather: DRY (NO PRECIPITATION DURING SURVEY)

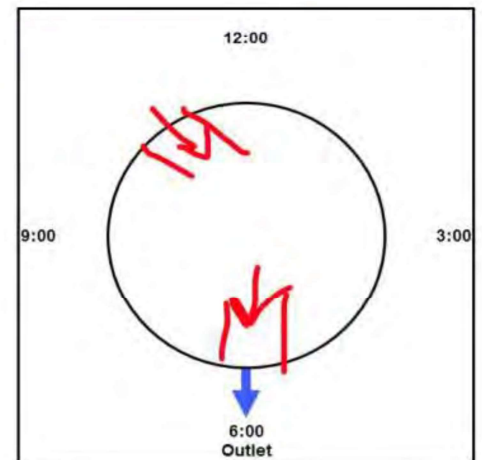
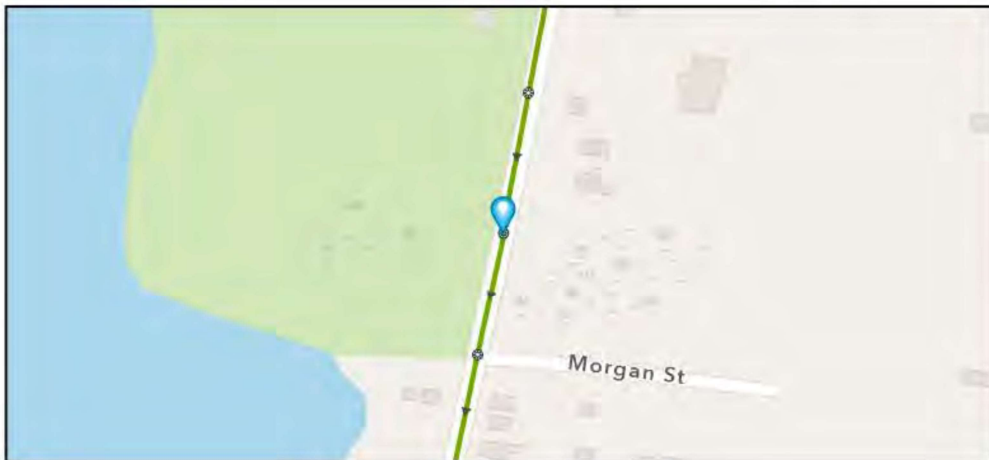
Street: ROUTE 27

GIS MH No: 1-32A

Type of Manhole: SANITARY SEWER (GRAVITY)

Inspection Status: SURFACE INSPECTION: LEVEL 1 (NO MANHOLE ENTRY)

Manhole Location and Configuration



Inspection Photos





Town of Stonington, Connecticut

Manhole Inspection Form

Manhole Information

Inspector: BH AND TT

Date: 4/18/2022

Weather: DRY (NO PRECIPITATION DURING SURVEY)

Street: ROUTE 27

Location: PRIMARY ARTERIAL ROADS

GIS MH No: 1-32A

Type of Manhole: SANITARY SEWER (GRAVITY)

Inspection Status: SURFACE INSPECTION: LEVEL 1 (NO MANHOLE ENTRY)

Rim to Invert (ft): 9.25

Grade to Rim (in): 0

Manhole Infiltration

Surcharge: NO

Infiltration: NO

Number of Holes: 0

Metal Riser: YES

Manhole Characteristics

Location in MH	Mtrl. Code	Infil. Code	Cond. Code	Repair Codes	Comments
Frame/Cover	CAST IRON	NONE	SOUND	NONE	
Chimney	BRICK	NONE	SOUND	NONE	
Cone	OTHER (DESCRIBE IN DETAILS)	NONE	SOUND	NONE	NO CONE
Wall	CONCRETE (PRECAST)	NONE	SOUND	NONE	
Bench	BRICK	NONE	SOUND	NONE	
Invert/Channel	BRICK	NONE	SOUND	NONE	

Invert Information

Pipe	Direction	Rim to Invert	Pipe Dia. (in)	Pipe Mtrl. Code	Clock Position*	Comments
Pipe 1	OUT	9.25	18	REINFORCED CONCRETE PIPE	06:00	
Pipe 2	IN	9.25	18	REINFORCED CONCRETE PIPE	10:00	
Pipe 3						
Pipe 4						
Pipe 5						

Additional
Comments

*6:00 is outlet



CDM
Smith

Town of Stonington, Connecticut

Manhole Inspection Form

Manhole Information

Inspector: BM AK

Date: 9/8/2022

Weather: DRY (NO PRECIPITATION DURING SURVEY)

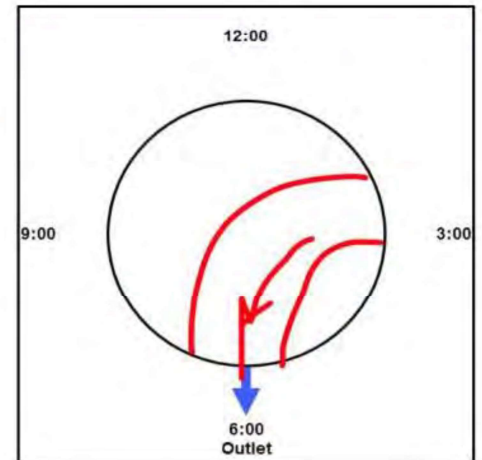
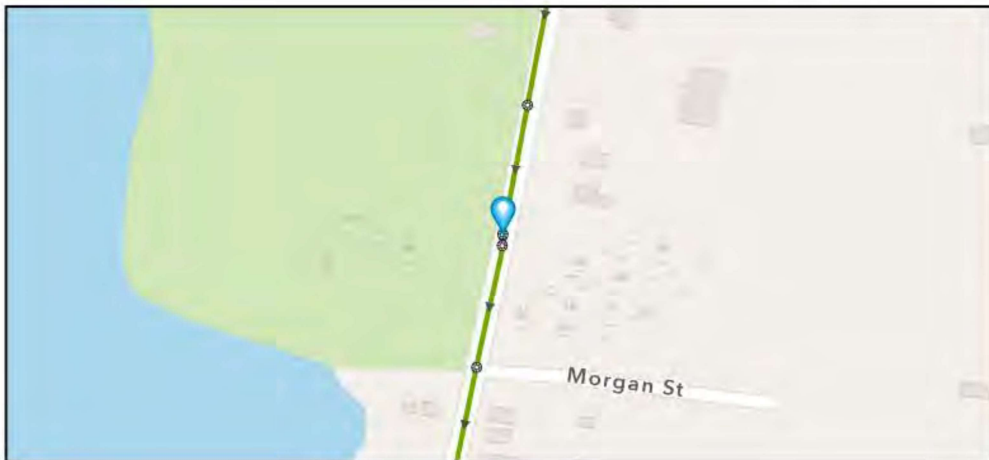
Street: ROUTE 27

GIS MH No: 1-33

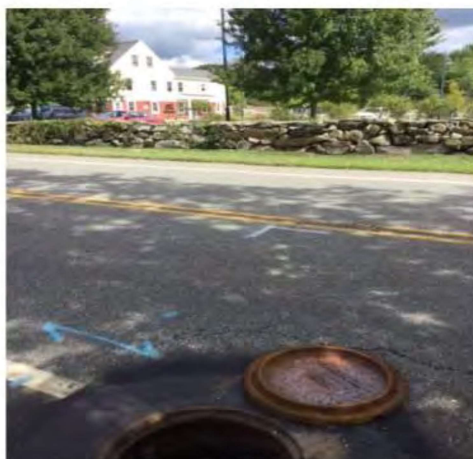
Type of Manhole: SANITARY SEWER (GRAVITY)

Inspection Status: SURFACE INSPECTION: LEVEL 1 (NO MANHOLE ENTRY)

Manhole Location and Configuration



Inspection Photos





Manhole Inspection Form

Manhole Information

Inspector: BM AK
Date: 9/8/2022
Weather: DRY (NO PRECIPITATION DURING SURVEY)
Street: ROUTE 27
Location: PRIMARY ARTERIAL ROADS

GIS MH No: 1-33
Type of Manhole: SANITARY SEWER (GRAVITY)
Inspection Status: SURFACE INSPECTION: LEVEL 1 (NO MANHOLE ENTRY)
Rim to Invert (ft): 8.5
Grade to Rim (in): 0

Manhole Infiltration

Surcharge: NO
Infiltration: YES

Number of Holes: 0
Metal Riser: NO

Manhole Characteristics

Location in MH	Mtrl. Code	Infil. Code	Cond. Code	Repair Codes	Comments
Frame/Cover	CAST IRON	NONE	SOUND	NONE	
Chimney	BRICK	NONE	DEFECTIVE	NONE	BRICK AND CONCRETE BLOCK. HYDROGEN SULFIDE.
Cone	CONCRETE (PRECAST)	NONE	DEFECTIVE	NONE	HYDROGEN SULFIDE.
Wall	CONCRETE (PRECAST)	RUNNER	DEFECTIVE	LINE_MANHOLE	INFILTRATION AND HYDROGEN SULFIDE.
Bench	BRICK	NONE	SOUND	NONE	
Invert/Channel	BRICK	NONE	SOUND	NONE	

Invert Information

Pipe	Direction	Rim to Invert	Pipe Dia. (in)	Pipe Mtrl. Code	Clock Position*	Comments
Pipe 1	OUT	8.5	18	REINFORCED CONCRETE PIPE	06:00	
Pipe 2	IN	6.5	18	REINFORCED CONCRETE PIPE	03:00	TOP OF DROP
Pipe 3	IN	8.5	18	REINFORCED CONCRETE PIPE	03:00	BOTTOM OF DROP
Pipe 4						
Pipe 5						

**Additional
Comments**



Manhole Inspection Form

Manhole Information

Inspector: BH AND TT

Date: 4/18/2022

Weather: DRY (NO PRECIPITATION DURING SURVEY)

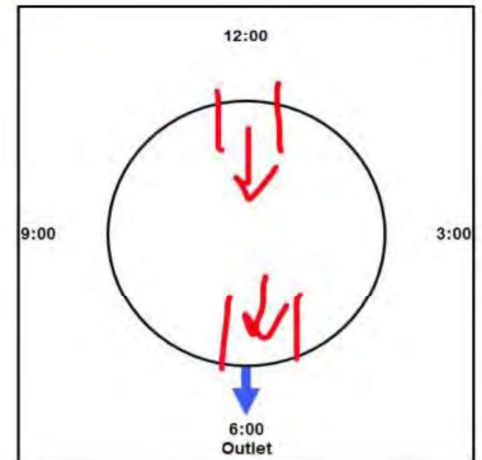
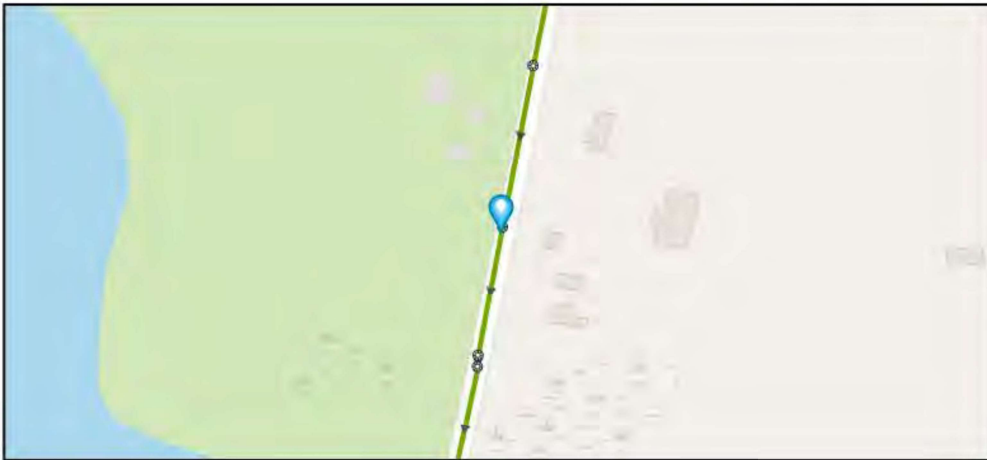
Street: ROUTE 27

GIS MH No: 1-34

Type of Manhole: SANITARY SEWER (GRAVITY)

Inspection Status: SURFACE INSPECTION: LEVEL 1 (NO MANHOLE ENTRY)

Manhole Location and Configuration



Inspection Photos



**Manhole Inspection Form****Manhole Information****Inspector:** BH AND TT**Date:** 4/18/2022**Weather:** DRY (NO PRECIPITATION DURING SURVEY)**Street:** ROUTE 27**Location:** PRIMARY ARTERIAL ROADS**GIS MH No:** 1-34**Type of Manhole:** SANITARY SEWER (GRAVITY)**Inspection Status:** SURFACE INSPECTION: LEVEL 1 (NO MANHOLE ENTRY)**Rim to Invert (ft):** 11.5**Grade to Rim (in):** 0**Manhole Infiltration****Surcharge:** NO**Number of Holes:** 0**Infiltration:** NO**Metal Riser:** YES**Manhole Characteristics**

Location in MH	Mtrl. Code	Infil. Code	Cond. Code	Repair Codes	Comments
Frame/Cover	CAST IRON	NONE	SOUND	NONE	
Chimney	BRICK	NONE	SOUND	NONE	
Cone	OTHER (DESCRIBE IN DETAILS)	NONE	NOT KNOWN	NONE	NO CONE
Wall	CONCRETE (PRECAST)	NONE	SOUND	NONE	
Bench	BRICK	NONE	SOUND	NONE	
Invert/Channel	BRICK	NONE	SOUND	NONE	

Invert Information

Pipe	Direction	Rim to Invert	Pipe Dia. (in)	Pipe Mtrl. Code	Clock Position*	Comments
Pipe 1	OUT	11.5	18	REINFORCED CONCRETE PIPE	06:00	
Pipe 2	IN	11.5	18	REINFORCED CONCRETE PIPE	12:00	
Pipe 3						
Pipe 4						
Pipe 5						

**Additional
Comments**



CDM
Smith

Town of Stonington, Connecticut

Manhole Inspection Form

Manhole Information

Inspector: BM AK

Date: 9/8/2022

Weather: DRY (NO PRECIPITATION DURING SURVEY)

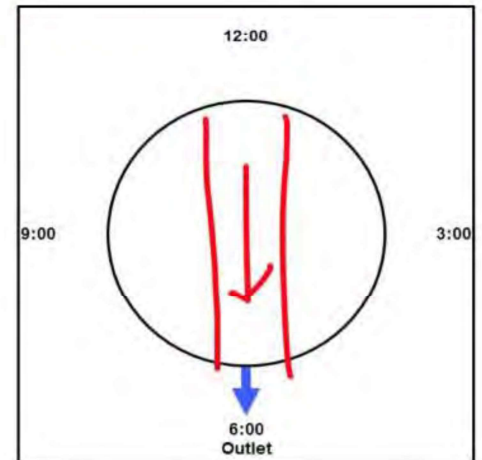
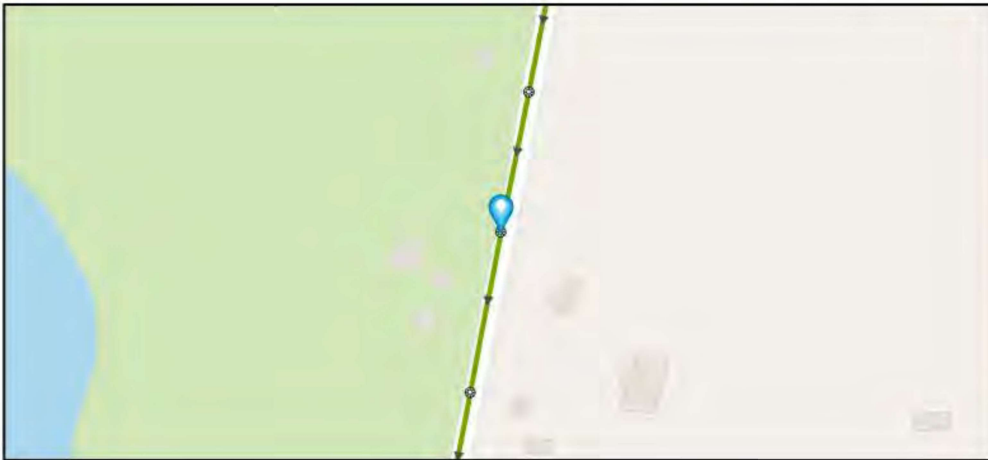
Street: ROUTE 27

GIS MH No: 1-35

Type of Manhole: SANITARY SEWER (GRAVITY)

Inspection Status: SURFACE INSPECTION: LEVEL 1 (NO MANHOLE ENTRY)

Manhole Location and Configuration



Inspection Photos



**Manhole Inspection Form****Manhole Information**

Inspector: BM AK
Date: 9/8/2022
Weather: DRY (NO PRECIPITATION DURING SURVEY)
Street: ROUTE 27
Location: PRIMARY ARTERIAL ROADS

GIS MH No: 1-35
Type of Manhole: SANITARY SEWER (GRAVITY)
Inspection Status: SURFACE INSPECTION: LEVEL 1 (NO MANHOLE ENTRY)
Rim to Invert (ft): 10
Grade to Rim (in): 0

Manhole Infiltration

Surcharge: NO
Infiltration: NO

Number of Holes: 0
Metal Riser: NO

Manhole Characteristics

Location in MH	Mtrl. Code	Infil. Code	Cond. Code	Repair Codes	Comments
Frame/Cover	CAST IRON	NONE	SOUND	NONE	
Chimney	BRICK	NONE	SOUND	NONE	
Cone	CONCRETE (PRECAST)	NONE	SOUND	NONE	
Wall	CONCRETE (PRECAST)	NONE	SOUND	NONE	
Bench	BRICK	NONE	SOUND	NONE	
Invert/Channel	BRICK	NONE	SOUND	NONE	

Invert Information

Pipe	Direction	Rim to Invert	Pipe Dia. (in)	Pipe Mtrl. Code	Clock Position*	Comments
Pipe 1	OUT	10	18	REINFORCED CONCRETE PIPE	06:00	
Pipe 2	IN	10	18	REINFORCED CONCRETE PIPE	12:00	
Pipe 3						
Pipe 4						
Pipe 5						

Additional
Comments



CDM
Smith

Town of Stonington, Connecticut

Manhole Inspection Form

Manhole Information

Inspector: BM AK

Date: 9/8/2022

Weather: DRY (NO PRECIPITATION DURING SURVEY)

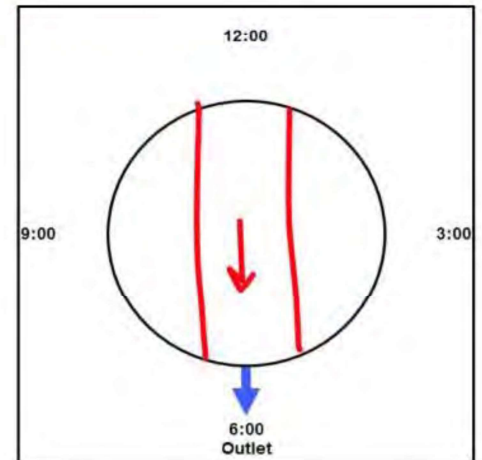
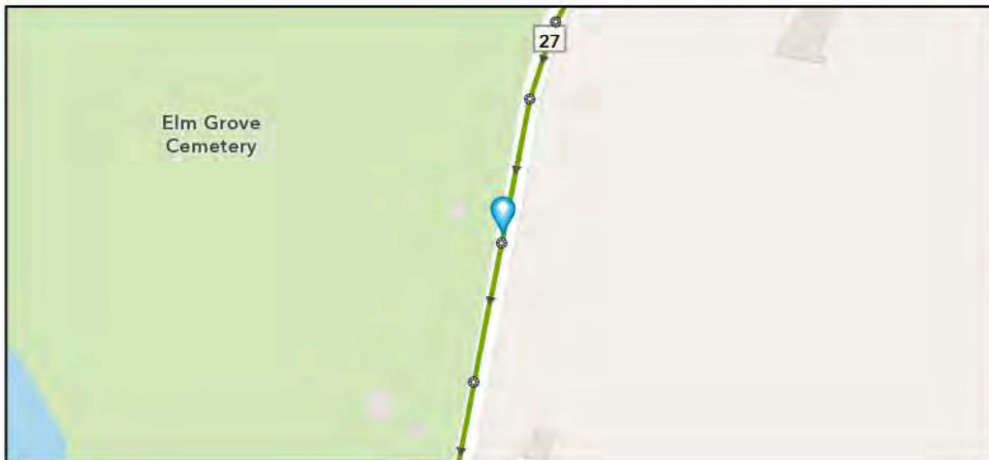
Street: ROUTE 27

GIS MH No: 1-36

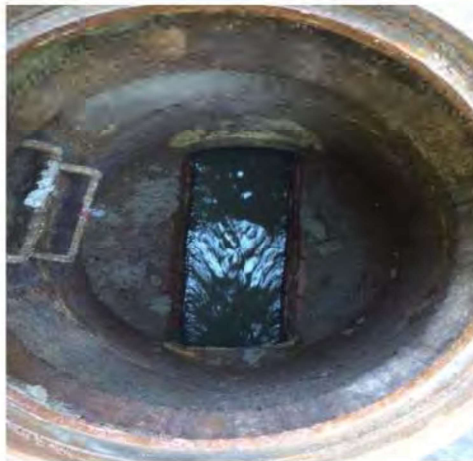
Type of Manhole: SANITARY SEWER (GRAVITY)

Inspection Status: SURFACE INSPECTION: LEVEL 1 (NO MANHOLE ENTRY)

Manhole Location and Configuration



Inspection Photos





Town of Stonington, Connecticut

Manhole Inspection Form

Manhole Information

Inspector: BM AK
Date: 9/8/2022
Weather: DRY (NO PRECIPITATION DURING SURVEY)
Street: ROUTE 27
Location: PRIMARY ARTERIAL ROADS

GIS MH No: 1-36
Type of Manhole: SANITARY SEWER (GRAVITY)
Inspection Status: SURFACE INSPECTION: LEVEL 1 (NO MANHOLE ENTRY)
Rim to Invert (ft): 6.75
Grade to Rim (in): 0

Manhole Infiltration

Surcharge: NO
Infiltration: NO

Number of Holes: 0
Metal Riser: NO

Manhole Characteristics

Location in MH	Mtrl. Code	Infil. Code	Cond. Code	Repair Codes	Comments
Frame/Cover	CAST IRON	NONE	SOUND	NONE	
Chimney	BRICK	NONE	SOUND	NONE	
Cone	CONCRETE (PRECAST)	NONE	SOUND	NONE	
Wall	CONCRETE (PRECAST)	NONE	SOUND	NONE	
Bench	BRICK	NONE	SOUND	NONE	
Invert/Channel	BRICK	NONE	SOUND	NONE	

Invert Information

Pipe	Direction	Rim to Invert	Pipe Dia. (in)	Pipe Mtrl. Code	Clock Position*	Comments
Pipe 1	OUT	6.75	18	REINFORCED CONCRETE PIPE	06:00	
Pipe 2	IN	6.75	18	REINFORCED CONCRETE PIPE	12:00	
Pipe 3						
Pipe 4						
Pipe 5						

Additional
Comments

*6:00 is outlet



CDM
Smith

Town of Stonington, Connecticut

Manhole Inspection Form

Manhole Information

Inspector: BH AND TT

Date: 4/18/2022

Weather: DRY (NO PRECIPITATION DURING SURVEY)

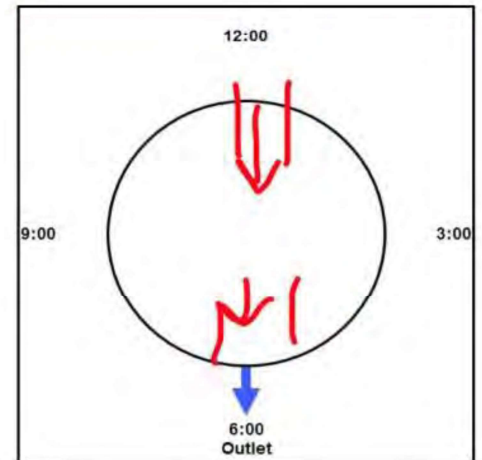
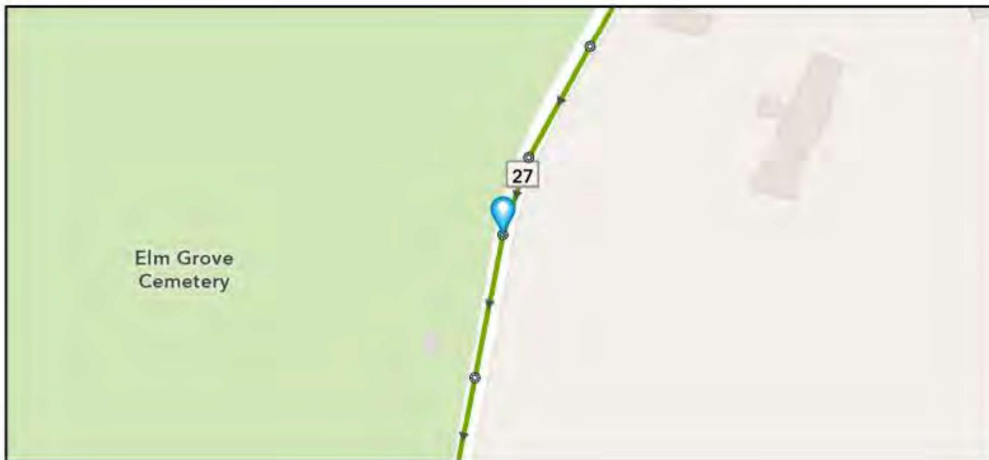
Street: ROUTE 27

GIS MH No: 1-37

Type of Manhole: SANITARY SEWER (GRAVITY)

Inspection Status: SURFACE INSPECTION: LEVEL 1 (NO MANHOLE ENTRY)

Manhole Location and Configuration



Inspection Photos



**Manhole Inspection Form****Manhole Information****Inspector:** BH AND TT**Date:** 4/18/2022**Weather:** DRY (NO PRECIPITATION DURING SURVEY)**Street:** ROUTE 27**Location:** PRIMARY ARTERIAL ROADS**GIS MH No:** 1-37**Type of Manhole:** SANITARY SEWER (GRAVITY)**Inspection Status:** SURFACE INSPECTION: LEVEL 1 (NO MANHOLE ENTRY)**Rim to Invert (ft):** 10**Grade to Rim (in):** 0**Manhole Infiltration****Surcharge:** NO**Number of Holes:** 0**Infiltration:** NO**Metal Riser:** NO**Manhole Characteristics**

Location in MH	Mtrl. Code	Infil. Code	Cond. Code	Repair Codes	Comments
Frame/Cover	CAST IRON	NONE	SOUND	NONE	
Chimney	BRICK	NONE	SOUND	NONE	
Cone	CONCRETE (PRECAST)	NONE	SOUND	NONE	NO CONE
Wall	CONCRETE (PRECAST)	NONE	SOUND	NONE	
Bench	BRICK	NONE	SOUND	NONE	
Invert/Channel	BRICK	NONE	SOUND	NONE	☐

Invert Information

Pipe	Direction	Rim to Invert	Pipe Dia. (in)	Pipe Mtrl. Code	Clock Position*	Comments
Pipe 1	OUT	10	18	REINFORCED CONCRETE PIPE	06:00	
Pipe 2	IN	10	18	REINFORCED CONCRETE PIPE	12:00	
Pipe 3						
Pipe 4						
Pipe 5						

**Additional
Comments**



CDM
Smith

Town of Stonington, Connecticut

Manhole Inspection Form

Manhole Information

Inspector: BM AK

Date: 9/8/2022

Weather: DRY (NO PRECIPITATION DURING SURVEY)

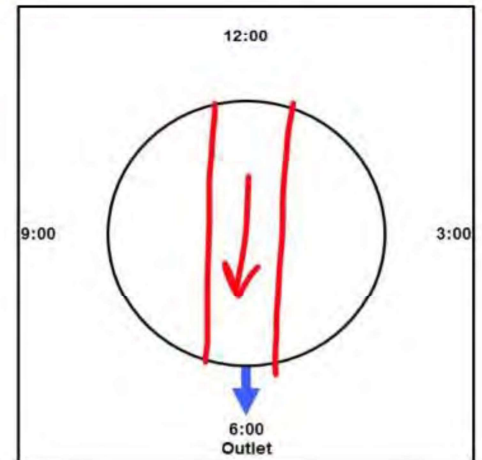
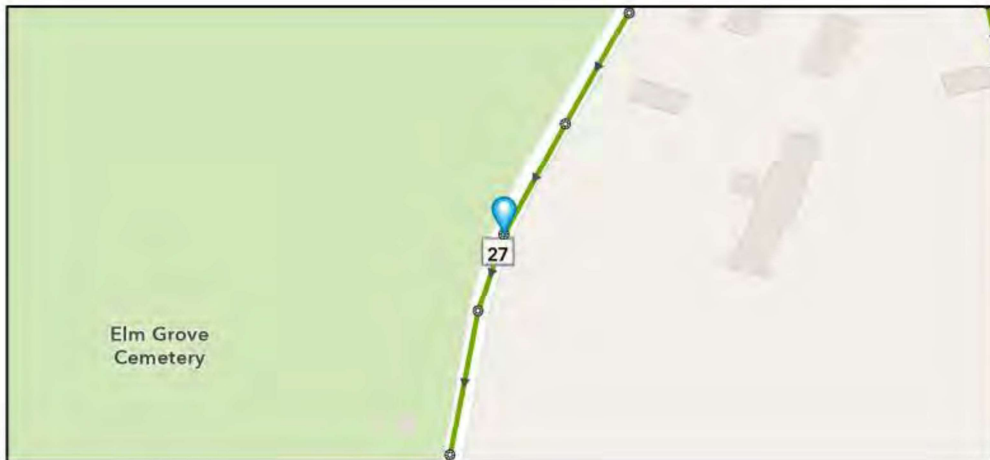
Street: ROUTE 27

GIS MH No: 1-38

Type of Manhole: SANITARY SEWER (GRAVITY)

Inspection Status: SURFACE INSPECTION: LEVEL 1 (NO MANHOLE ENTRY)

Manhole Location and Configuration



Inspection Photos





Town of Stonington, Connecticut

Manhole Inspection Form

Manhole Information

Inspector: BM AK
Date: 9/8/2022
Weather: DRY (NO PRECIPITATION DURING SURVEY)
Street: ROUTE 27
Location: PRIMARY ARTERIAL ROADS

GIS MH No: 1-38
Type of Manhole: SANITARY SEWER (GRAVITY)
Inspection Status: SURFACE INSPECTION: LEVEL 1 (NO MANHOLE ENTRY)
Rim to Invert (ft): 13.75
Grade to Rim (in): 0

Manhole Infiltration

Surcharge: NO
Infiltration: NO
Number of Holes: 0
Metal Riser: NO

Manhole Characteristics

Location in MH	Mtrl. Code	Infil. Code	Cond. Code	Repair Codes	Comments
Frame/Cover	CAST IRON	NONE	SOUND	NONE	
Chimney	BRICK	NONE	SOUND	NONE	
Cone	OTHER (DESCRIBE IN DETAILS)	NONE	SOUND	NONE	NO CONE
Wall	CONCRETE (PRECAST)	NONE	DEFECTIVE	LINE_MANHOLE,REMOVE ROOTS	
Bench	BRICK	NONE	SOUND	NONE	
Invert/Channel	BRICK	NONE	SOUND	NONE	

Invert Information

Pipe	Direction	Rim to Invert	Pipe Dia. (in)	Pipe Mtrl. Code	Clock Position*	Comments
Pipe 1	OUT	13.75	18	REINFORCED CONCRETE PIPE	06:00	
Pipe 2	IN	13.75	18	REINFORCED CONCRETE PIPE	12:00	
Pipe 3						
Pipe 4						
Pipe 5						

Additional
Comments



Manhole Inspection Form

Manhole Information

Inspector: BM AK

Date: 9/8/2022

Weather: DRY (NO PRECIPITATION DURING SURVEY)

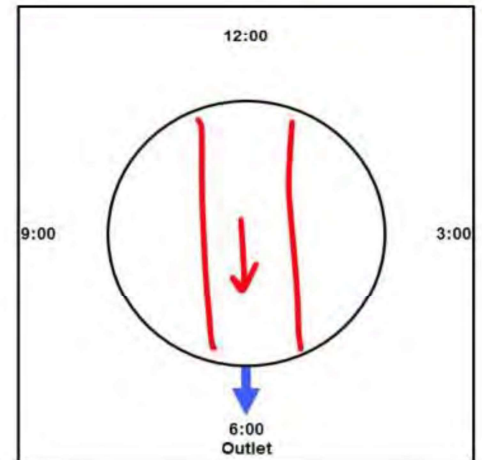
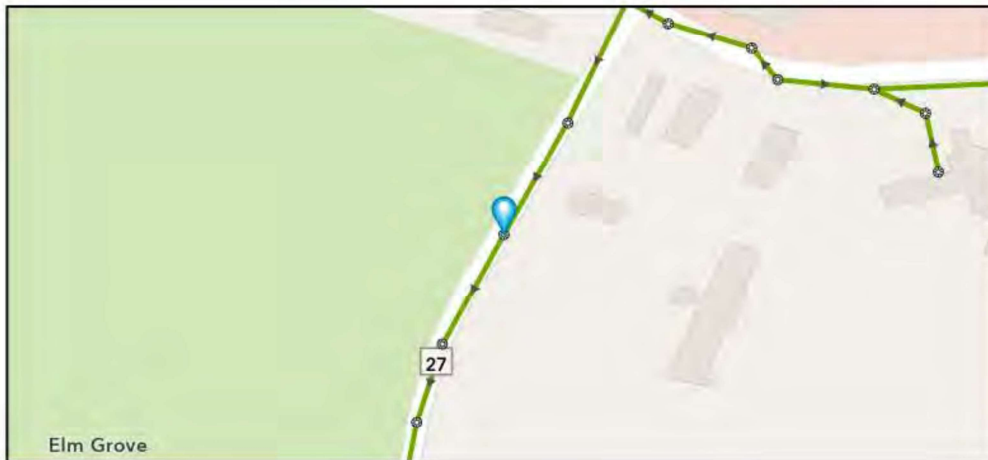
Street: ROUTE 27

GIS MH No: 1-39

Type of Manhole: SANITARY SEWER (GRAVITY)

Inspection Status: SURFACE INSPECTION: LEVEL 1 (NO MANHOLE ENTRY)

Manhole Location and Configuration



Inspection Photos





Town of Stonington, Connecticut

Manhole Inspection Form

Manhole Information

Inspector: BM AK
Date: 9/8/2022
Weather: DRY (NO PRECIPITATION DURING SURVEY)
Street: ROUTE 27
Location: PRIMARY ARTERIAL ROADS

GIS MH No: 1-39
Type of Manhole: SANITARY SEWER (GRAVITY)
Inspection Status: SURFACE INSPECTION: LEVEL 1 (NO MANHOLE ENTRY)
Rim to Invert (ft): 13.75
Grade to Rim (in): 0

Manhole Infiltration

Surcharge: NO
Infiltration: NO
Number of Holes: 0
Metal Riser: NO

Manhole Characteristics

Location in MH	Mtrl. Code	Infil. Code	Cond. Code	Repair Codes	Comments
Frame/Cover	CAST IRON	NONE	SOUND	NONE	
Chimney	BRICK	NONE	SOUND	NONE	BRICK AND CONCRETE BLOCK
Cone	OTHER (DESCRIBE IN DETAILS)	NONE	SOUND	NONE	NO CONE
Wall	CONCRETE (PRECAST)	NONE	SOUND	CLEAN	
Bench	BRICK	NONE	SOUND	NONE	
Invert/Channel	BRICK	NONE	SOUND	NONE	

Invert Information

Pipe	Direction	Rim to Invert	Pipe Dia. (in)	Pipe Mtrl. Code	Clock Position*	Comments
Pipe 1	OUT	13.75	18	REINFORCED CONCRETE PIPE	06:00	
Pipe 2	IN	13.75	18	REINFORCED CONCRETE PIPE	12:00	
Pipe 3						
Pipe 4						
Pipe 5						

Additional
Comments

*6:00 is outlet



Manhole Inspection Form

Manhole Information

Inspector: BH AND TT

Date: 4/18/2022

Weather: DRY (NO PRECIPITATION DURING SURVEY)

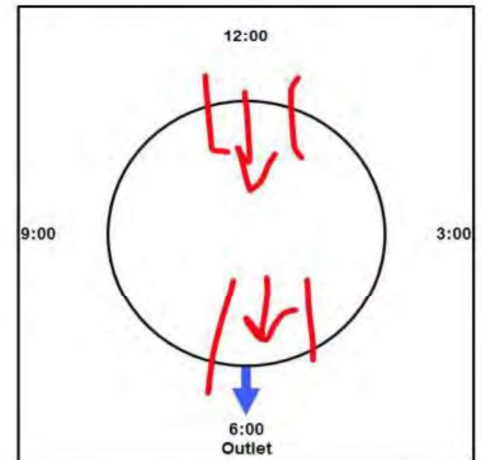
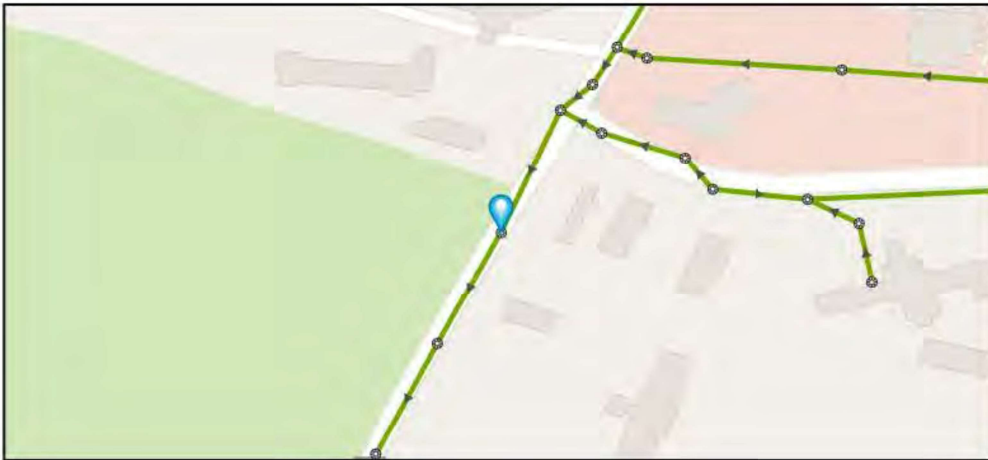
Street: ROUTE 27

GIS MH No: 1-40

Type of Manhole: SANITARY SEWER (GRAVITY)

Inspection Status: SURFACE INSPECTION: LEVEL 1 (NO MANHOLE ENTRY)

Manhole Location and Configuration



Inspection Photos



**Manhole Inspection Form****Manhole Information****Inspector:** BH AND TT**Date:** 4/18/2022**Weather:** DRY (NO PRECIPITATION DURING SURVEY)**Street:** ROUTE 27**Location:** PRIMARY ARTERIAL ROADS**GIS MH No:** 1-40**Type of Manhole:** SANITARY SEWER (GRAVITY)**Inspection Status:** SURFACE INSPECTION: LEVEL 1 (NO MANHOLE ENTRY)**Rim to Invert (ft):** 12.5**Grade to Rim (in):** 0**Manhole Infiltration****Surcharge:** NO**Number of Holes:** 0**Infiltration:** NO**Metal Riser:** YES**Manhole Characteristics**

Location in MH	Mtrl. Code	Infil. Code	Cond. Code	Repair Codes	Comments
Frame/Cover	CAST IRON	NONE	SOUND	NONE	
Chimney	CONCRETE BLOCK	NONE	SOUND	NONE	CONCRETE BLOCK AND BRICK
Cone	CONCRETE (PRECAST)	NONE	SOUND	NONE,SEAL_REPOINT	NO CONE
Wall	CONCRETE (PRECAST)	NONE	SOUND	NONE	
Bench	BRICK	NONE	SOUND	NONE	
Invert/Channel	BRICK	NONE	DEFECTIVE	CLEAN	DEBRIS IN CHANNEL

Invert Information

Pipe	Direction	Rim to Invert	Pipe Dia. (in)	Pipe Mtrl. Code	Clock Position*	Comments
Pipe 1	OUT	12.5	18	REINFORCED CONCRETE PIPE	06:00	
Pipe 2	IN	12.5	18	REINFORCED CONCRETE PIPE	12:00	
Pipe 3						
Pipe 4						
Pipe 5						

**Additional
Comments**



CDM
Smith

Town of Stonington, Connecticut

Manhole Inspection Form

Manhole Information

Inspector: BH AND TT

Date: 4/18/2022

Weather: DRY (NO PRECIPITATION DURING SURVEY)

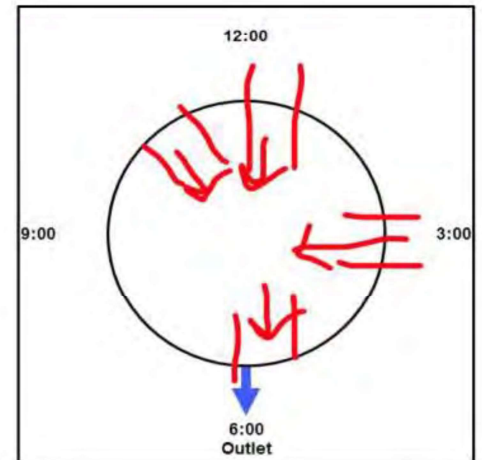
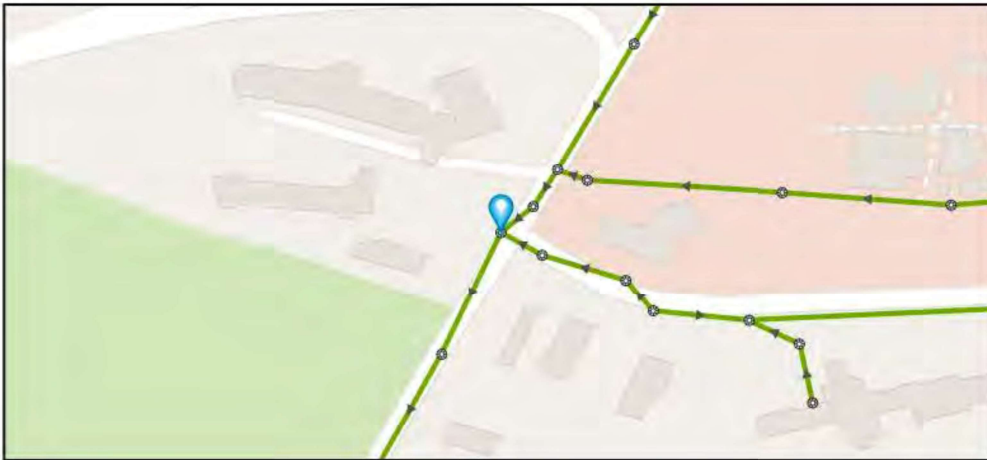
Street: ROUTE 27

GIS MH No: 1-40A

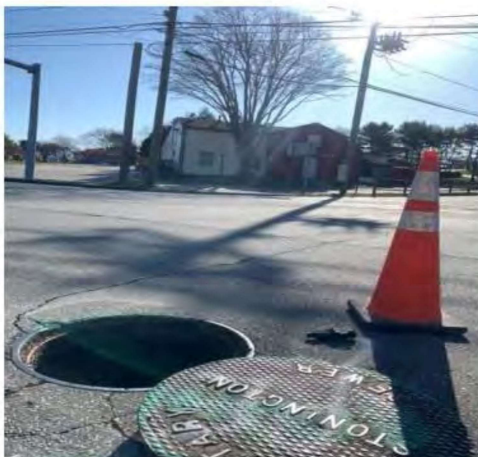
Type of Manhole: SANITARY SEWER (GRAVITY)

Inspection Status: SURFACE INSPECTION: LEVEL 1 (NO MANHOLE ENTRY)

Manhole Location and Configuration



Inspection Photos



**Manhole Inspection Form****Manhole Information****Inspector:** BH AND TT**Date:** 4/18/2022**Weather:** DRY (NO PRECIPITATION DURING SURVEY)**Street:** ROUTE 27**Location:** PRIMARY ARTERIAL ROADS**GIS MH No:** 1-40A**Type of Manhole:** SANITARY SEWER (GRAVITY)**Inspection Status:** SURFACE INSPECTION: LEVEL 1 (NO MANHOLE ENTRY)**Rim to Invert (ft):** 11.5**Grade to Rim (in):** 0**Manhole Infiltration****Surcharge:** NO**Number of Holes:** 0**Infiltration:** NO**Metal Riser:** YES**Manhole Characteristics**

Location in MH	Mtrl. Code	Infil. Code	Cond. Code	Repair Codes	Comments
Frame/Cover	CAST IRON	NONE	BROKEN	REBUILD TOP, REPLACE FRAME AND CHIMNEY	
Chimney	BRICK	NONE	SOUND	NONE	
Cone	CONCRETE (PRECAST)	NONE	SOUND	NONE	NO CONE
Wall	CONCRETE (PRECAST)	NONE	DEFECTIVE	LINE_MANHOLE	CORROSION
Bench	BRICK	NONE	SOUND	NONE	
Invert/Channel	BRICK	NONE	SOUND	NONE	

Invert Information

Pipe	Direction	Rim to Invert	Pipe Dia. (in)	Pipe Mtrl. Code	Clock Position*	Comments
Pipe 1	OUT	11.5	18	REINFORCED CONCRETE PIPE	06:00	
Pipe 2	IN	11.5	10	CAST IRON	11:30	FLOWING
Pipe 3	IN	11.5	10	CAST IRON	1:00	CLOGGED
Pipe 4	IN	11.5	8	VITRIFIED CLAY PIPE	03:00	
Pipe 5						

**Additional
Comments**



**CDM
Smith**

Town of Stonington, Connecticut

Manhole Inspection Form

Manhole Information

Inspector: BH AND TT

Date: 4/18/2022

Weather: DRY (NO PRECIPITATION DURING SURVEY)

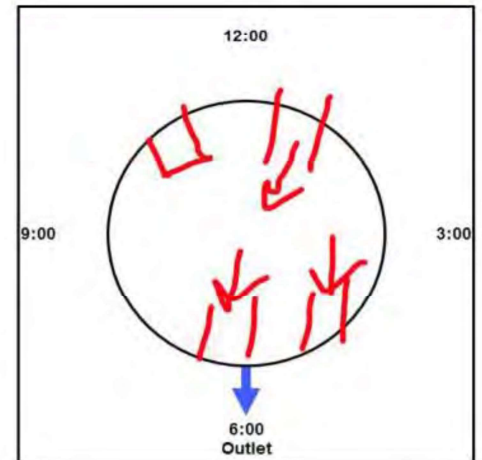
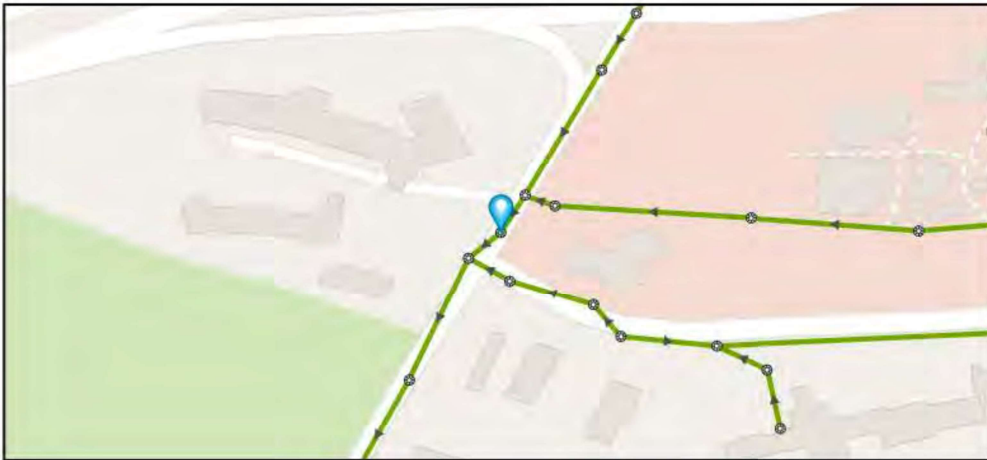
Street: ROUTE 27

GIS MH No: 1-40B

Type of Manhole: SANITARY SEWER (GRAVITY)

Inspection Status: SURFACE INSPECTION: LEVEL 1 (NO MANHOLE ENTRY)

Manhole Location and Configuration



Inspection Photos





Town of Stonington, Connecticut

Manhole Inspection Form

Manhole Information

Inspector: BH AND TT

Date: 4/18/2022

Weather: DRY (NO PRECIPITATION DURING SURVEY)

Street: ROUTE 27

Location: PRIMARY ARTERIAL ROADS

GIS MH No: 1-40B

Type of Manhole: SANITARY SEWER (GRAVITY)

Inspection Status: SURFACE INSPECTION: LEVEL 1 (NO MANHOLE ENTRY)

Rim to Invert (ft): 10

Grade to Rim (in): -1

Manhole Infiltration

Surcharge: NO

Infiltration: NO

Number of Holes: 0

Metal Riser: YES

Manhole Characteristics

Location in MH	Mtrl. Code	Infil. Code	Cond. Code	Repair Codes	Comments
Frame/Cover	CAST IRON	NONE	SOUND	NONE	
Chimney	CONCRETE (PRECAST)	NONE	SOUND	NONE	
Cone	CONCRETE (PRECAST)	NONE	SOUND	NONE	
Wall	CONCRETE (PRECAST)	NONE	SOUND	NONE	
Bench	BRICK	NONE	SOUND	NONE	
Invert/Channel	BRICK	NONE	SOUND	NONE	

Invert Information

Pipe	Direction	Rim to Invert	Pipe Dia. (in)	Pipe Mtrl. Code	Clock Position*	Comments
Pipe 1	OUT	10	8	CAST IRON	06:00	
Pipe 2	IN	10	10	CAST IRON	11:30	
Pipe 3	IN	10	18	REINFORCED CONCRETE PIPE	12:30	
Pipe 4	OUT	10	10	CAST IRON	05:00	PIPE CLOGGED, NO FLOW GOING OUT
Pipe 5						

Additional Comments LOTS OF PAVEMENT ON TOP,



Manhole Inspection Form

Manhole Information

Inspector: BH AND TT

Date: 4/18/2022

Weather: DRY (NO PRECIPITATION DURING SURVEY)

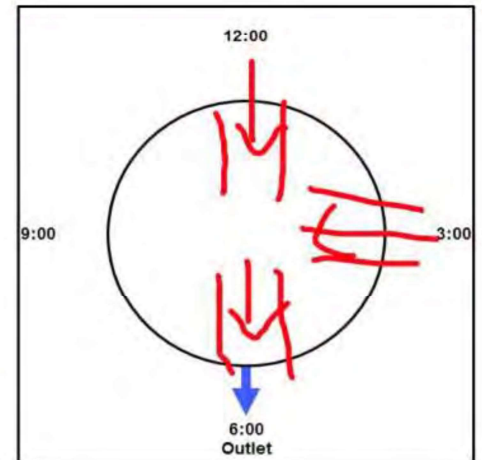
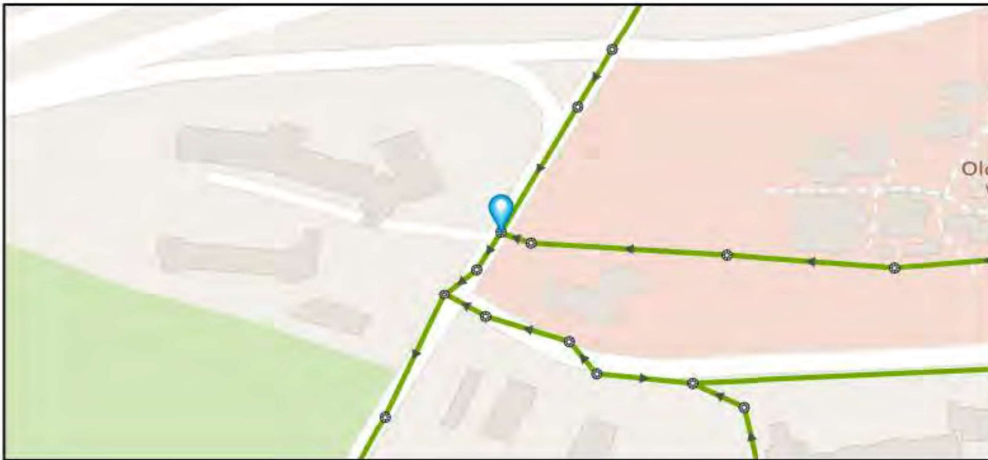
Street: ROUTE 27

GIS MH No: 1-40C

Type of Manhole: SANITARY SEWER (GRAVITY)

Inspection Status: SURFACE INSPECTION: LEVEL 1 (NO MANHOLE ENTRY)

Manhole Location and Configuration



Inspection Photos



**Manhole Inspection Form****Manhole Information****Inspector:** BH AND TT**Date:** 4/18/2022**Weather:** DRY (NO PRECIPITATION DURING SURVEY)**Street:** ROUTE 27**Location:** PRIMARY ARTERIAL ROADS**GIS MH No:** 1-40C**Type of Manhole:** SANITARY SEWER (GRAVITY)**Inspection Status:** SURFACE INSPECTION: LEVEL 1 (NO MANHOLE ENTRY)**Rim to Invert (ft):** 9.3**Grade to Rim (in):** 0**Manhole Infiltration****Surcharge:** NO**Number of Holes:** 0**Infiltration:** NO**Metal Riser:** YES**Manhole Characteristics**

Location in MH	Mtrl. Code	Infil. Code	Cond. Code	Repair Codes	Comments
Frame/Cover	CAST IRON	NONE	SOUND	REPLACE FRAME AND COVER	COVER IS CHIPPED A LITTLE, COVERED IN PAVEMENT. NEEDS TO BE REPLACED.
Chimney	BRICK	NONE	SOUND	NONE	
Cone	OTHER (DESCRIBE IN DETAILS)	NONE	SOUND	NONE	NO CONE
Wall	CONCRETE (PRECAST)	NONE	SOUND	NONE	
Bench	BRICK	NONE	SOUND	NONE	
Invert/Channel	BRICK	NONE	SOUND	NONE	

Invert Information

Pipe	Direction	Rim to Invert	Pipe Dia. (in)	Pipe Mtrl. Code	Clock Position*	Comments
Pipe 1	OUT	9.3	18	REINFORCED CONCRETE PIPE	06:00	
Pipe 2	IN	9.3	18	REINFORCED CONCRETE PIPE	12:00	
Pipe 3	IN	9.3	12	REINFORCED CONCRETE PIPE	03:00	
Pipe 4						
Pipe 5						

**Additional
Comments**



Manhole Inspection Form

Manhole Information

Inspector: BM AK

Date: 9/8/2022

Weather: DRY (NO PRECIPITATION DURING SURVEY)

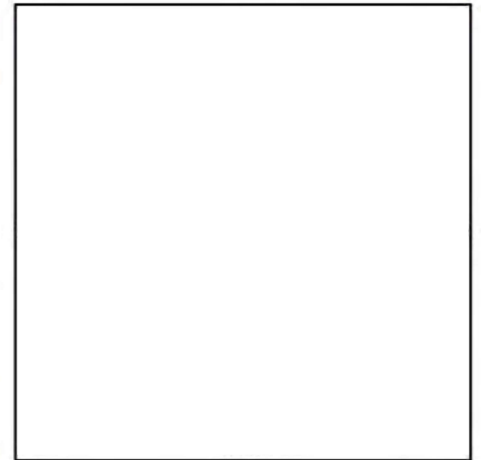
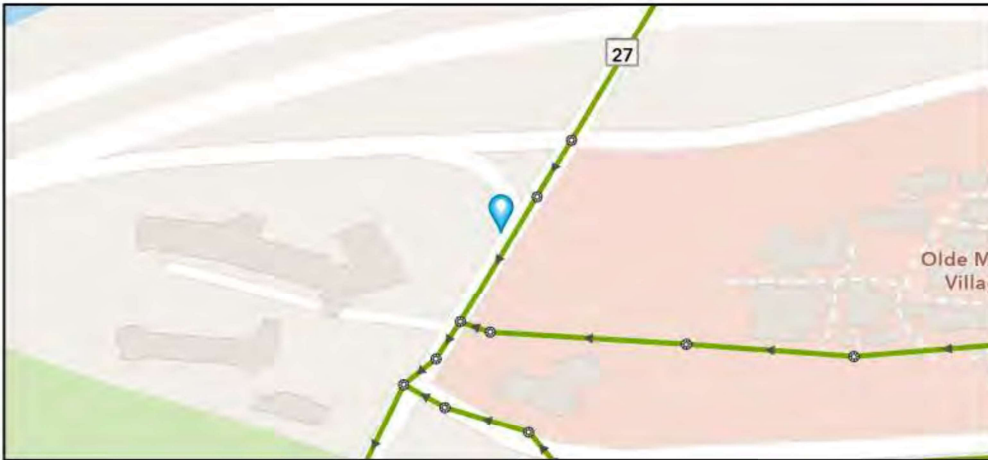
Street: ROUTE 27

GIS MH No: 1-41

Type of Manhole:

Inspection Status: NO ACCESS

Manhole Location and Configuration



Inspection Photos





Town of Stonington, Connecticut

Manhole Inspection Form

Manhole Information

Inspector: BM AK

Date: 9/8/2022

Weather: DRY (NO PRECIPITATION DURING SURVEY)

Street: ROUTE 27

Location: PRIMARY ARTERIAL ROADS

GIS MH No: 1-41

Type of Manhole:

Inspection Status: NO ACCESS

Rim to Invert (ft):

Grade to Rim (in):

Manhole Infiltration

Surcharge:

Infiltration:

Number of Holes:

Metal Riser:

Manhole Characteristics

Location in MH	Mtrl. Code	Infil. Code	Cond. Code	Repair Codes	Comments
Frame/Cover					
Chimney					
Cone					
Wall					
Bench					
Invert/Channel					

Invert Information

Pipe	Direction	Rim to Invert	Pipe Dia. (in)	Pipe Mtrl. Code	Clock Position*	Comments
Pipe 1						
Pipe 2						
Pipe 3						
Pipe 4						
Pipe 5						

Additional
Comments