



CDM
Smith

Town of Stonington, Connecticut

Manhole Inspection Form

Manhole Information

Inspector: BM AND JC

Date: 5/6/2022

Weather: DRY (NO PRECIPITATION DURING SURVEY)

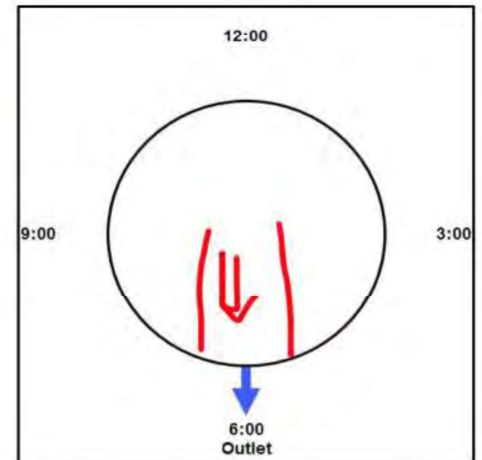
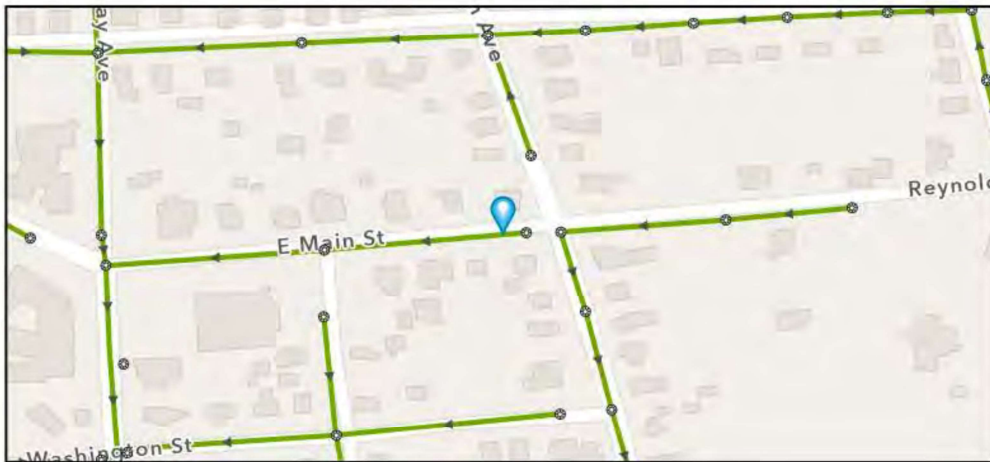
Street: 62 EAST MAIN STREET

GIS MH No: 1-110

Type of Manhole: SANITARY SEWER (GRAVITY)

Inspection Status: SURFACE INSPECTION: LEVEL 1 (NO MANHOLE ENTRY)

Manhole Location and Configuration



Inspection Photos





Town of Stonington, Connecticut

Manhole Inspection Form

Manhole Information

Inspector: BM AND JC

Date: 5/6/2022

Weather: DRY (NO PRECIPITATION DURING SURVEY)

Street: 62 EAST MAIN STREET

Location: LOCAL RURAL STREETS

GIS MH No: 1-110

Type of Manhole: SANITARY SEWER (GRAVITY)

Inspection Status: SURFACE INSPECTION: LEVEL 1 (NO MANHOLE ENTRY)

Rim to Invert (ft): 7

Grade to Rim (in): 0

Manhole Infiltration

Surcharge: NO

Infiltration: NO

Number of Holes: 1

Metal Riser: NO

Manhole Characteristics

Location in MH	Mtrl. Code	Infil. Code	Cond. Code	Repair Codes	Comments
Frame/Cover	CAST IRON	WEEPER	DEFECTIVE	NONE	
Chimney	BRICK	NONE	SOUND	NONE	
Cone	CONCRETE (PRECAST)	NONE	SOUND	NONE	
Wall	CONCRETE (PRECAST)	NONE	SOUND	NONE	
Bench	BRICK	NONE	SOUND	NONE	
Invert/Channel	BRICK	NONE	SOUND	NONE	

Invert Information

Pipe	Direction	Rim to Invert	Pipe Dia. (in)	Pipe Mtrl. Code	Clock Position*	Comments
Pipe 1	OUT	7	8	ASBESTOS CONCRETE	06:00	
Pipe 2						
Pipe 3						
Pipe 4						
Pipe 5						

Additional
Comments

*6:00 is outlet



Town of Stonington, Connecticut

Manhole Inspection Form

Manhole Information

Inspector: BM AK

Date: 9/8/2022

Weather: DRY (NO PRECIPITATION DURING SURVEY)

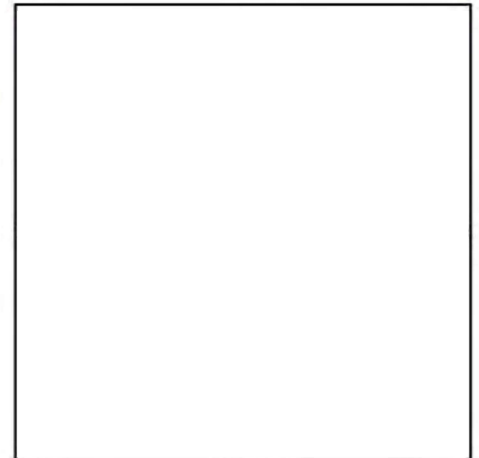
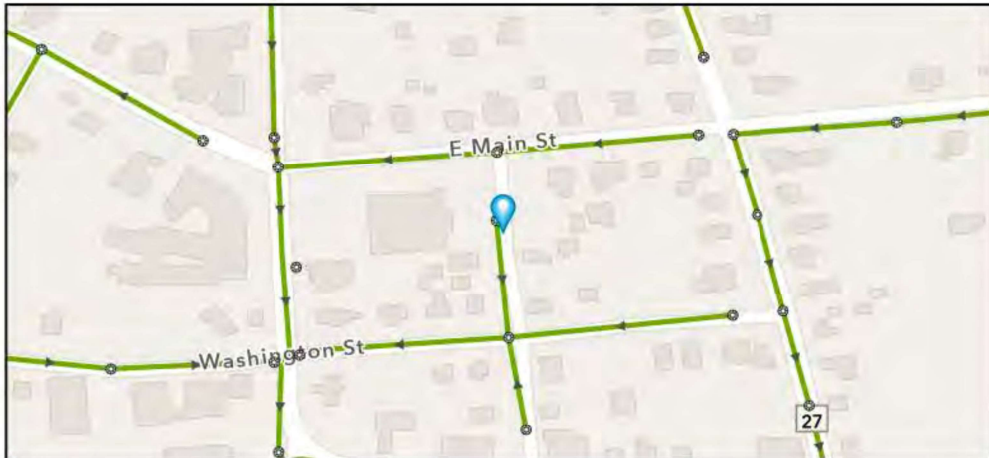
Street: LINCOLN STREET

GIS MH No: 1-111

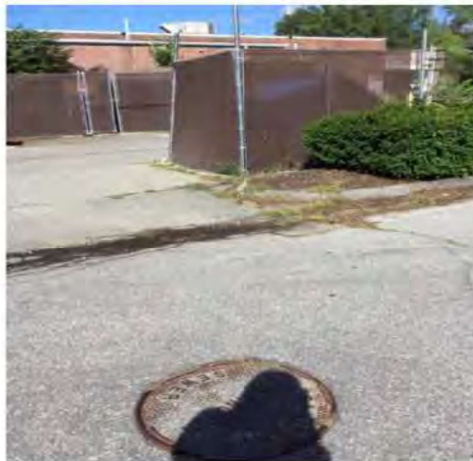
Type of Manhole:

Inspection Status: NO ACCESS

Manhole Location and Configuration



Inspection Photos



**Manhole Inspection Form****Manhole Information****Inspector:** BM AK**GIS MH No:** 1-111**Date:** 9/8/2022**Type of Manhole:****Weather:** DRY (NO PRECIPITATION DURING SURVEY)**Inspection Status:** NO ACCESS**Street:** LINCOLN STREET**Rim to Invert (ft):****Location:** SECONDARY ROADS**Grade to Rim (in):****Manhole Infiltration****Surcharge:****Number of Holes:****Infiltration:****Metal Riser:****Manhole Characteristics**

Location in MH	Mtrl. Code	Infil. Code	Cond. Code	Repair Codes	Comments
Frame/Cover					
Chimney					
Cone					
Wall					
Bench					
Invert/Channel					

Invert Information

Pipe	Direction	Rim to Invert	Pipe Dia. (in)	Pipe Mtrl. Code	Clock Position*	Comments
Pipe 1						
Pipe 2						
Pipe 3						
Pipe 4						
Pipe 5						

**Additional
Comments**



CDM
Smith

Town of Stonington, Connecticut

Manhole Inspection Form

Manhole Information

Inspector: BM AND JC

Date: 5/6/2022

Weather: DRY (NO PRECIPITATION DURING SURVEY)

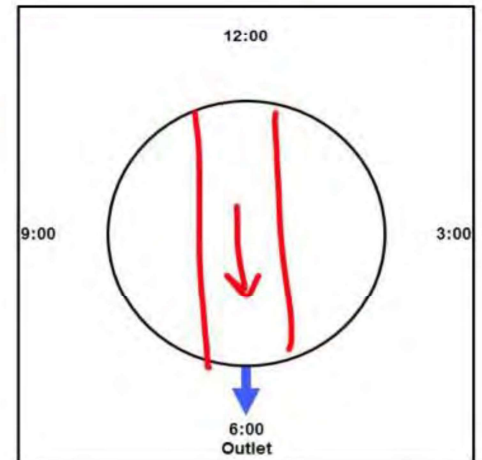
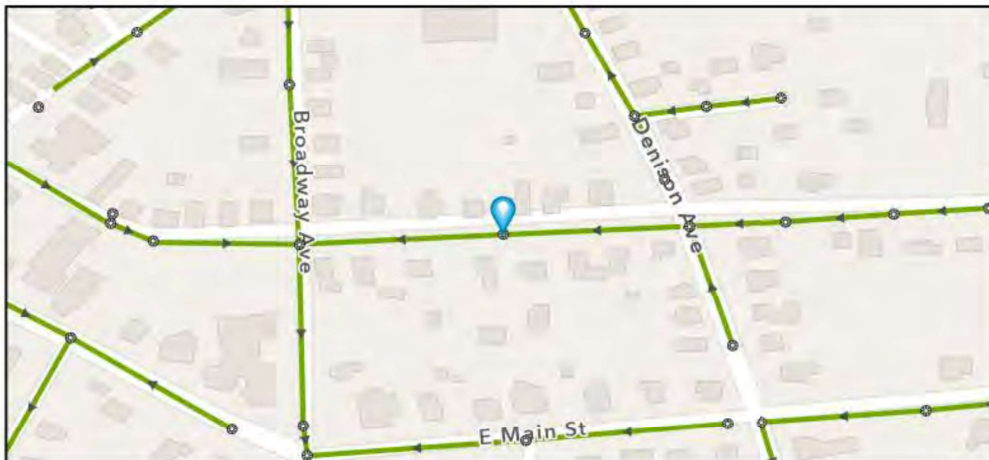
Street: 34 CHURCH STREET

GIS MH No: 1-112

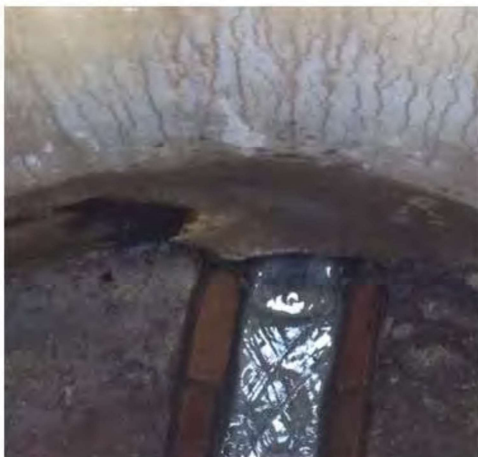
Type of Manhole: SANITARY SEWER (GRAVITY)

Inspection Status: SURFACE INSPECTION: LEVEL 1 (NO MANHOLE ENTRY)

Manhole Location and Configuration



Inspection Photos



**Manhole Inspection Form****Manhole Information****Inspector:** BM AND JC**Date:** 5/6/2022**Weather:** DRY (NO PRECIPITATION DURING SURVEY)**GIS MH No:** 1-112**Type of Manhole:** SANITARY SEWER (GRAVITY)**Inspection Status:** SURFACE INSPECTION: LEVEL 1 (NO MANHOLE ENTRY)**Street:** 34 CHURCH STREET**Location:** LOCAL RURAL STREETS**Rim to Invert (ft):** 7.75**Grade to Rim (in):** 0**Manhole Infiltration****Surcharge:** NO**Infiltration:** YES**Number of Holes:** 0**Metal Riser:** NO**Manhole Characteristics**

Location in MH	Mtrl. Code	Infil. Code	Cond. Code	Repair Codes	Comments
Frame/Cover	CAST IRON	WEEPER	SOUND	NONE	
Chimney	BRICK	NONE	SOUND	NONE	
Cone	CONCRETE (PRECAST)	NONE	SOUND	NONE	
Wall	CONCRETE (PRECAST)	WEEPER	DEFECTIVE	LINE_MANHOLE	
Bench	BRICK	NONE	SOUND	NONE	
Invert/Channel	BRICK	NONE	SOUND	NONE	

Invert Information

Pipe	Direction	Rim to Invert	Pipe Dia. (in)	Pipe Mtrl. Code	Clock Position*	Comments
Pipe 1	OUT	7.75	8	ASBESTOS CONCRETE	06:00	
Pipe 2	IN	7.75	8	ASBESTOS CONCRETE	12:00	
Pipe 3						
Pipe 4						
Pipe 5						

**Additional
Comments**



Town of Stonington, Connecticut

Manhole Inspection Form

Manhole Information

Inspector: BM AK

Date: 9/8/2022

Weather: DRY (NO PRECIPITATION DURING SURVEY)

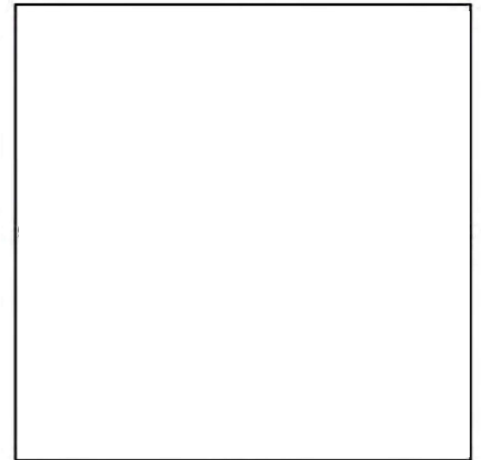
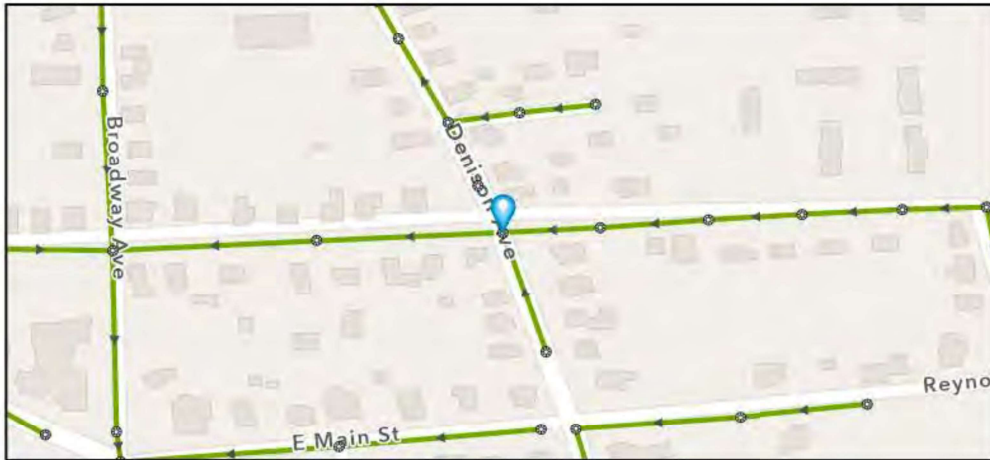
Street: ROUTE 27

GIS MH No: 1-113

Type of Manhole:

Inspection Status: NO ACCESS

Manhole Location and Configuration



Inspection Photos





Town of Stonington, Connecticut

Manhole Inspection Form

Manhole Information

Inspector: BM AK
Date: 9/8/2022

Weather: DRY (NO PRECIPITATION DURING SURVEY)

Street: ROUTE 27
Location: PRIMARY ARTERIAL ROADS

GIS MH No: 1-113
Type of Manhole:
Inspection Status: NO ACCESS

Rim to Invert (ft):
Grade to Rim (in):

Manhole Infiltration

Surcharge:
Infiltration:

Number of Holes:
Metal Riser:

Manhole Characteristics

Location in MH	Mtrl. Code	Infil. Code	Cond. Code	Repair Codes	Comments
Frame/Cover					
Chimney					
Cone					
Wall					
Bench					
Invert/Channel					

Invert Information

Pipe	Direction	Rim to Invert	Pipe Dia. (in)	Pipe Mtrl. Code	Clock Position*	Comments
Pipe 1						
Pipe 2						
Pipe 3						
Pipe 4						
Pipe 5						

Additional
Comments



CDM
Smith

Town of Stonington, Connecticut

Manhole Inspection Form

Manhole Information

Inspector: BM AND JC

Date: 5/6/2022

Weather: DRY (NO PRECIPITATION DURING SURVEY)

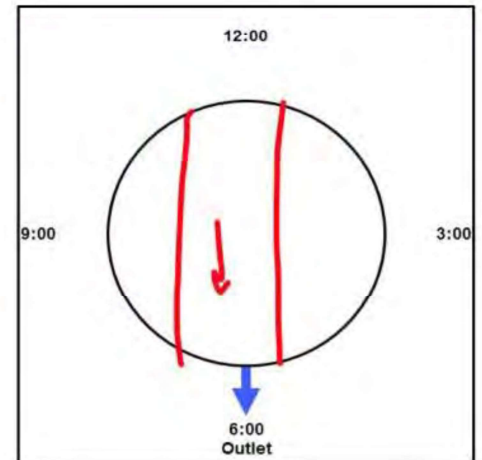
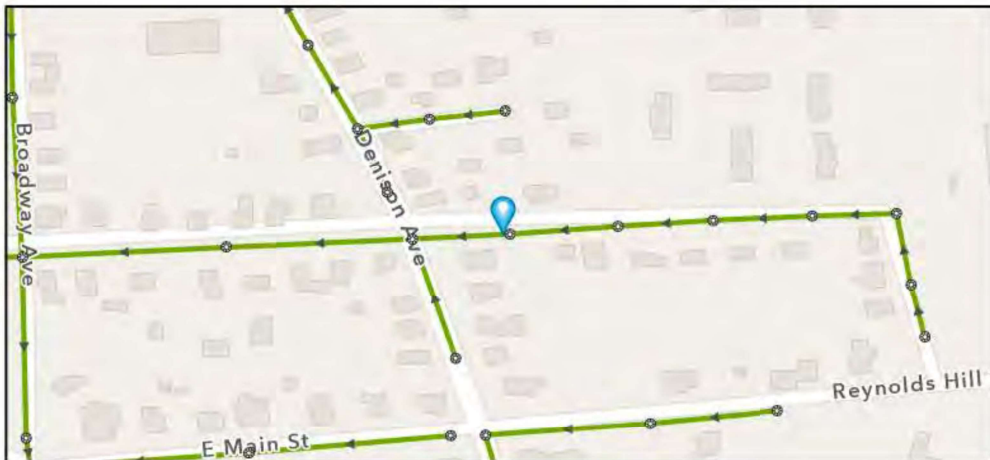
Street: 45 CHURCH ST

GIS MH No: 1-114

Type of Manhole: SANITARY SEWER (GRAVITY)

Inspection Status: SURFACE INSPECTION: LEVEL 1 (NO MANHOLE ENTRY)

Manhole Location and Configuration



Inspection Photos



**Manhole Inspection Form****Manhole Information****Inspector:** BM AND JC**Date:** 5/6/2022**Weather:** DRY (NO PRECIPITATION DURING SURVEY)**GIS MH No:** 1-114**Type of Manhole:** SANITARY SEWER (GRAVITY)**Inspection Status:** SURFACE INSPECTION: LEVEL 1 (NO MANHOLE ENTRY)**Street:** 45 CHURCH ST**Location:** LOCAL RURAL STREETS**Rim to Invert (ft):** 9**Grade to Rim (in):** 0**Manhole Infiltration****Surcharge:** NO**Number of Holes:** 0**Infiltration:** NO**Metal Riser:** NO**Manhole Characteristics**

Location in MH	Mtrl. Code	Infil. Code	Cond. Code	Repair Codes	Comments
Frame/Cover	CAST IRON	NONE	SOUND	NONE	
Chimney	BRICK	NONE	SOUND	NONE	
Cone	CONCRETE (PRECAST)	NONE	SOUND	NONE	
Wall	CONCRETE (PRECAST)	NONE	SOUND	NONE	
Bench	BRICK	NONE	SOUND	NONE	
Invert/Channel	BRICK	NONE	SOUND	NONE	

Invert Information

Pipe	Direction	Rim to Invert	Pipe Dia. (in)	Pipe Mtrl. Code	Clock Position*	Comments
Pipe 1	OUT	9	8	ASBESTOS CONCRETE	06:00	
Pipe 2	IN	9	8	ASBESTOS CONCRETE	12:00	
Pipe 3						
Pipe 4						
Pipe 5						

**Additional
Comments**



**CDM
Smith**

Town of Stonington, Connecticut

Manhole Inspection Form

Manhole Information

Inspector: BM AND JC

Date: 5/6/2022

Weather: DRY (NO PRECIPITATION DURING SURVEY)

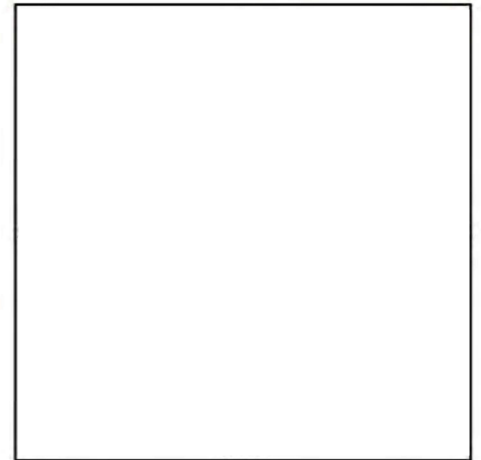
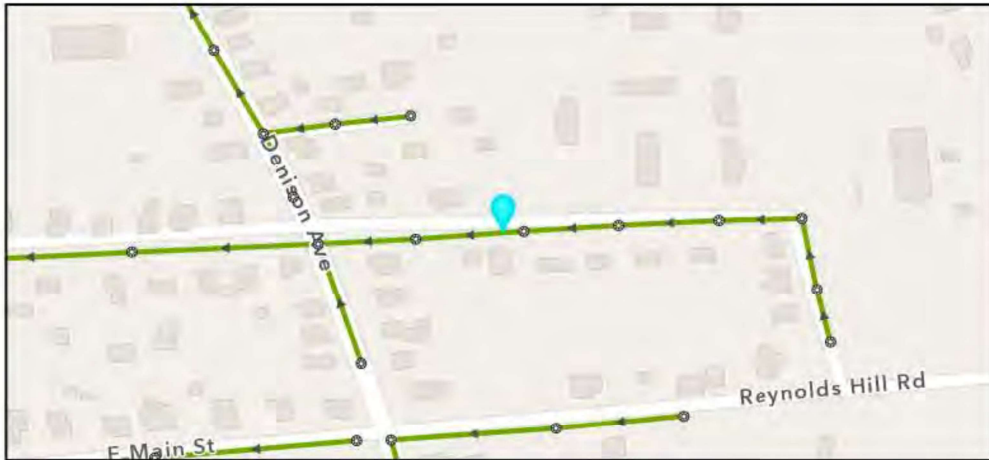
Street: CHURCH ST

GIS MH No: 1-115

Type of Manhole:

Inspection Status: NOT FOUND

Manhole Location and Configuration



Inspection Photos



**Manhole Inspection Form****Manhole Information****Inspector:** BM AND JC**GIS MH No:** 1-115**Date:** 5/6/2022**Type of Manhole:****Weather:** DRY (NO PRECIPITATION DURING SURVEY)**Inspection Status:** NOT FOUND**Street:** CHURCH ST**Rim to Invert (ft):****Location:** LOCAL RURAL STREETS**Grade to Rim (in):****Manhole Infiltration****Surcharge:****Number of Holes:****Infiltration:****Metal Riser:****Manhole Characteristics**

Location in MH	Mtrl. Code	Infil. Code	Cond. Code	Repair Codes	Comments
Frame/Cover					
Chimney					
Cone					
Wall					
Bench					
Invert/Channel					

Invert Information

Pipe	Direction	Rim to Invert	Pipe Dia. (in)	Pipe Mtrl. Code	Clock Position*	Comments
Pipe 1						
Pipe 2						
Pipe 3						
Pipe 4						
Pipe 5						

**Additional
Comments**



CDM
Smith

Town of Stonington, Connecticut

Manhole Inspection Form

Manhole Information

Inspector: BM AND JC

Date: 5/6/2022

Weather: DRY (NO PRECIPITATION DURING SURVEY)

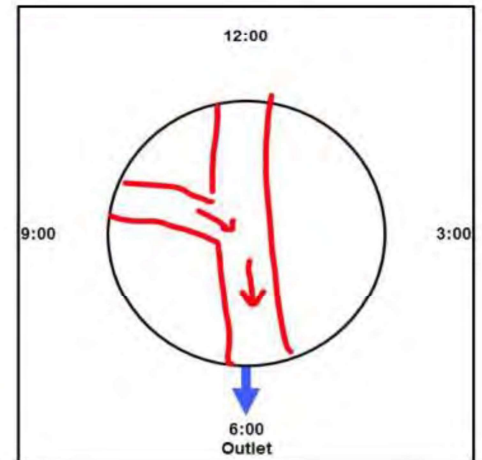
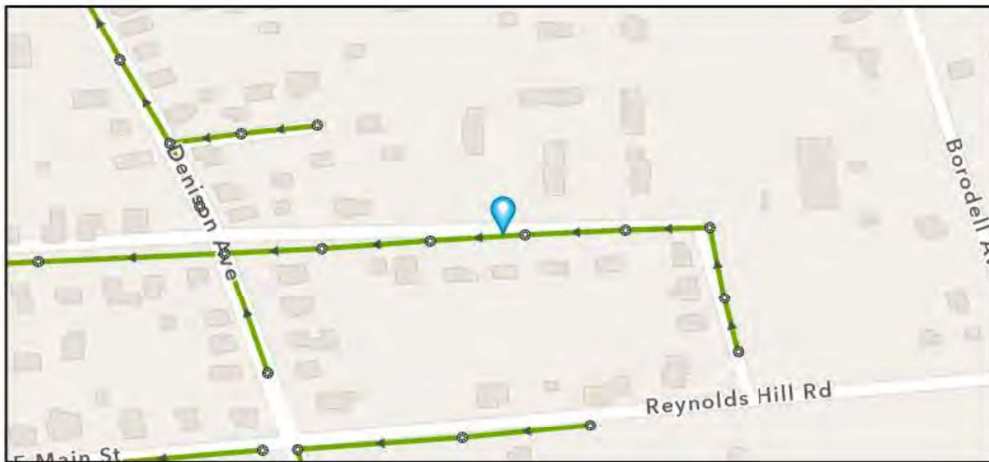
Street: CHURCH STREET

GIS MH No: 1-116

Type of Manhole: SANITARY SEWER (GRAVITY)

Inspection Status: SURFACE INSPECTION: LEVEL 1 (NO MANHOLE ENTRY)

Manhole Location and Configuration



Inspection Photos



**Manhole Inspection Form****Manhole Information****Inspector:** BM AND JC**Date:** 5/6/2022**Weather:** DRY (NO PRECIPITATION DURING SURVEY)**GIS MH No:** 1-116**Type of Manhole:** SANITARY SEWER (GRAVITY)**Inspection Status:** SURFACE INSPECTION: LEVEL 1 (NO MANHOLE ENTRY)**Street:** CHURCH STREET**Rim to Invert (ft):** 7.25**Location:** SECONDARY ROADS**Grade to Rim (in):** 0**Manhole Infiltration****Surcharge:** NO**Number of Holes:** 0**Infiltration:** NO**Metal Riser:** NO**Manhole Characteristics**

Location in MH	Mtrl. Code	Infil. Code	Cond. Code	Repair Codes	Comments
Frame/Cover	CAST IRON	STAINS	SOUND	NONE	
Chimney	BRICK	NONE	SOUND	NONE	
Cone	CONCRETE (PRECAST)	NONE	SOUND	NONE	
Wall	CONCRETE (PRECAST)	NONE	SOUND	NONE	
Bench	BRICK	NONE	SOUND	NONE	
Invert/Channel	CONCRETE BLOCK	NONE	SOUND	NONE	

Invert Information

Pipe	Direction	Rim to Invert	Pipe Dia. (in)	Pipe Mtrl. Code	Clock Position*	Comments
Pipe 1	OUT	7.25	8	ASBESTOS CONCRETE	06:00	
Pipe 2	IN	7	4	POLY VINYL CHLORIDE	12:00	
Pipe 3	IN	7.25	8	ASBESTOS CONCRETE	12:00	
Pipe 4						
Pipe 5						

**Additional
Comments**



CDM
Smith

Town of Stonington, Connecticut

Manhole Inspection Form

Manhole Information

Inspector: BM AND JC

Date: 5/6/2022

Weather: DRY (NO PRECIPITATION DURING SURVEY)

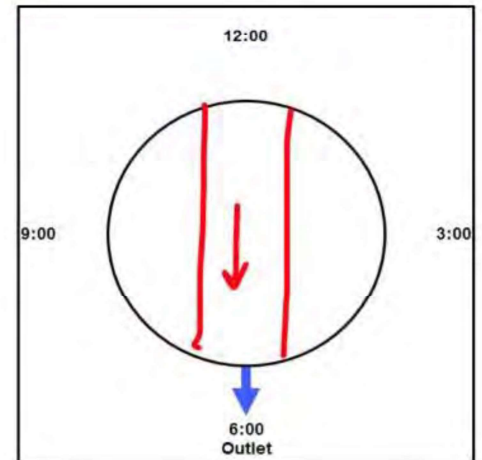
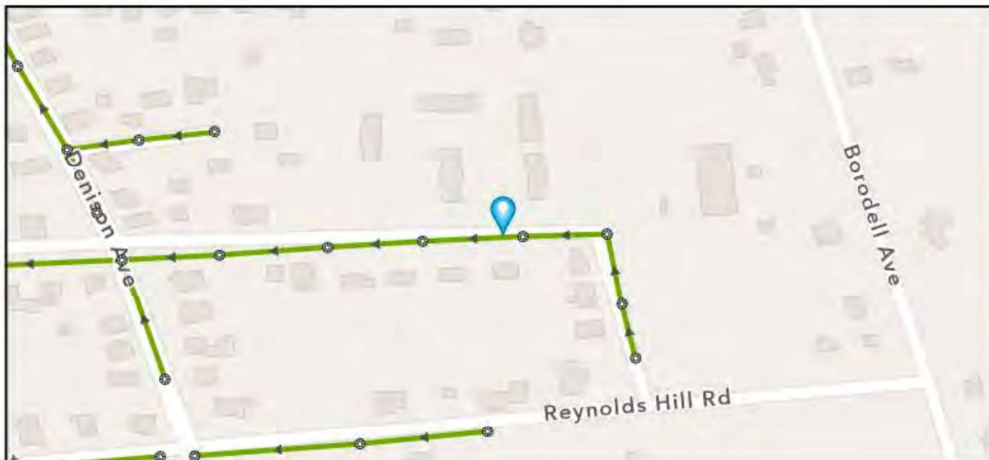
Street: 56 CHURCH STREET

GIS MH No: 1-117

Type of Manhole: SANITARY SEWER (GRAVITY)

Inspection Status: SURFACE INSPECTION: LEVEL 1 (NO MANHOLE ENTRY)

Manhole Location and Configuration



Inspection Photos



**Manhole Inspection Form****Manhole Information****Inspector:** BM AND JC**Date:** 5/6/2022**Weather:** DRY (NO PRECIPITATION DURING SURVEY)**GIS MH No:** 1-117**Type of Manhole:** SANITARY SEWER (GRAVITY)**Inspection Status:** SURFACE INSPECTION: LEVEL 1 (NO MANHOLE ENTRY)**Street:** 56 CHURCH STREET**Location:** LOCAL RURAL STREETS**Rim to Invert (ft):** 7.5**Grade to Rim (in):** 0**Manhole Infiltration****Surcharge:** NO**Number of Holes:** 0**Infiltration:** NO**Metal Riser:** NO**Manhole Characteristics**

Location in MH	Mtrl. Code	Infil. Code	Cond. Code	Repair Codes	Comments
Frame/Cover	CAST IRON	STAINS	SOUND	NONE	
Chimney	BRICK	NONE	SOUND	NONE	
Cone	CONCRETE (PRECAST)	NONE	SOUND	NONE	
Wall	CONCRETE (PRECAST)	NONE	SOUND	NONE	
Bench	BRICK	NONE	SOUND	NONE	
Invert/Channel	BRICK	NONE	SOUND	NONE	

Invert Information

Pipe	Direction	Rim to Invert	Pipe Dia. (in)	Pipe Mtrl. Code	Clock Position*	Comments
Pipe 1	OUT	7.5	8	ASBESTOS CONCRETE	06:00	
Pipe 2	IN	7.5	8	ASBESTOS CONCRETE	12:00	
Pipe 3						
Pipe 4						
Pipe 5						

**Additional
Comments**



CDM
Smith

Town of Stonington, Connecticut

Manhole Inspection Form

Manhole Information

Inspector: BM AND JC

Date: 5/6/2022

Weather: DRY (NO PRECIPITATION DURING SURVEY)

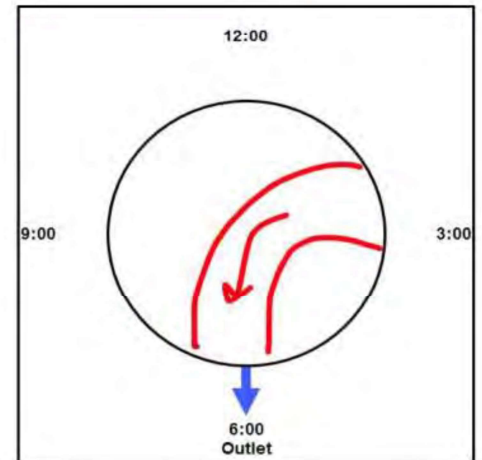
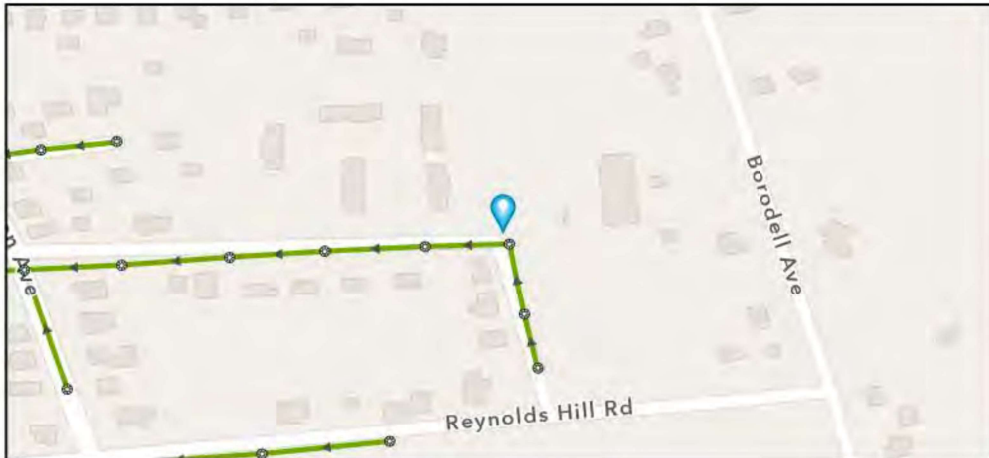
Street: 8 SUMMIT STREET

GIS MH No: 1-118

Type of Manhole: SANITARY SEWER (GRAVITY)

Inspection Status: SURFACE INSPECTION: LEVEL 1 (NO MANHOLE ENTRY)

Manhole Location and Configuration



Inspection Photos



**Manhole Inspection Form****Manhole Information****Inspector:** BM AND JC**Date:** 5/6/2022**Weather:** DRY (NO PRECIPITATION DURING SURVEY)**GIS MH No:** 1-118**Type of Manhole:** SANITARY SEWER (GRAVITY)**Inspection Status:** SURFACE INSPECTION: LEVEL 1 (NO MANHOLE ENTRY)**Street:** 8 SUMMIT STREET**Location:** LOCAL RURAL STREETS**Rim to Invert (ft):** 9**Grade to Rim (in):** 0**Manhole Infiltration****Surcharge:** NO**Infiltration:** NO**Number of Holes:** 0**Metal Riser:** NO**Manhole Characteristics**

Location in MH	Mtrl. Code	Infil. Code	Cond. Code	Repair Codes	Comments
Frame/Cover	CAST IRON	STAINS	SOUND	NONE	
Chimney	BRICK	NONE	DEFECTIVE	RESET EXISTING FRAME AND CHIMNEY	CHIMNEY STARTING TO BE DISPLACED
Cone	CONCRETE (PRECAST)	NONE	SOUND	NONE	
Wall	CONCRETE (PRECAST)	NONE	SOUND	NONE	
Bench	BRICK	NONE	SOUND	NONE	
Invert/Channel	BRICK	NONE	SOUND	NONE	

Invert Information

Pipe	Direction	Rim to Invert	Pipe Dia. (in)	Pipe Mtrl. Code	Clock Position*	Comments
Pipe 1	OUT	9	8	ASBESTOS CONCRETE	06:00	
Pipe 2	IN	9	8	ASBESTOS CONCRETE	02:00	
Pipe 3						
Pipe 4						
Pipe 5						

**Additional
Comments**



CDM
Smith

Town of Stonington, Connecticut

Manhole Inspection Form

Manhole Information

Inspector: BM AND JC

Date: 5/6/2022

Weather: DRY (NO PRECIPITATION DURING SURVEY)

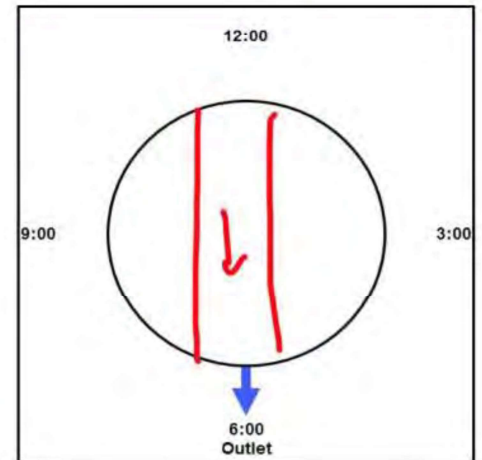
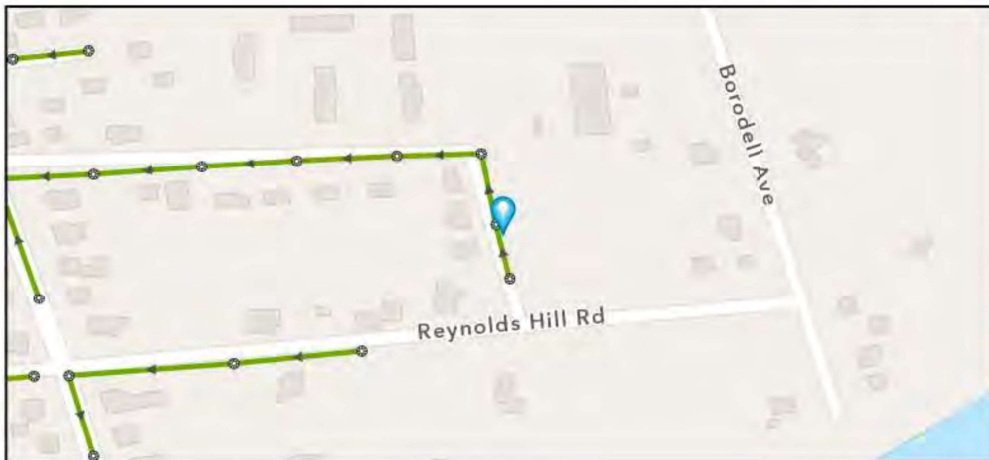
Street: 3 SUMMIT STREET

GIS MH No: 1-119

Type of Manhole: SANITARY SEWER (GRAVITY)

Inspection Status: SURFACE INSPECTION: LEVEL 1 (NO MANHOLE ENTRY)

Manhole Location and Configuration



Inspection Photos





Town of Stonington, Connecticut

Manhole Inspection Form

Manhole Information

Inspector: BM AND JC

Date: 5/6/2022

Weather: DRY (NO PRECIPITATION DURING SURVEY)

Street: 3 SUMMIT STREET

Location: LOCAL RURAL STREETS

GIS MH No: 1-119

Type of Manhole: SANITARY SEWER (GRAVITY)

Inspection Status: SURFACE INSPECTION: LEVEL 1 (NO MANHOLE ENTRY)

Rim to Invert (ft): 6.75

Grade to Rim (in): 0

Manhole Infiltration

Surcharge: NO

Infiltration: NO

Number of Holes: 0

Metal Riser: YES

Manhole Characteristics

Location in MH	Mtrl. Code	Infil. Code	Cond. Code	Repair Codes	Comments
Frame/Cover	CAST IRON	WEEPER	SOUND	NONE	
Chimney	BRICK	NONE	SOUND	NONE	
Cone	CONCRETE (PRECAST)	NONE	SOUND	NONE	
Wall	CONCRETE (PRECAST)	NONE	SOUND	NONE	
Bench	BRICK	NONE	SOUND	NONE	
Invert/Channel	BRICK	NONE	SOUND	NONE	

Invert Information

Pipe	Direction	Rim to Invert	Pipe Dia. (in)	Pipe Mtrl. Code	Clock Position*	Comments
Pipe 1	OUT	6.75	8	ASBESTOS CONCRETE	06:00	
Pipe 2	IN	6.75	8	ASBESTOS CONCRETE	12:00	
Pipe 3						
Pipe 4						
Pipe 5						

Additional
Comments

*6:00 is outlet



CDM
Smith

Town of Stonington, Connecticut

Manhole Inspection Form

Manhole Information

Inspector: BM AND JC5

Date: 5/6/2022

Weather: DRY (NO PRECIPITATION DURING SURVEY)

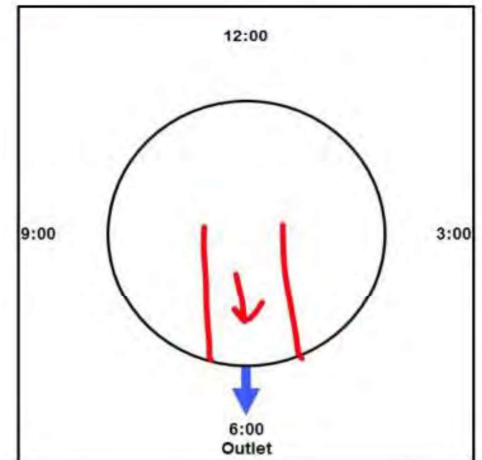
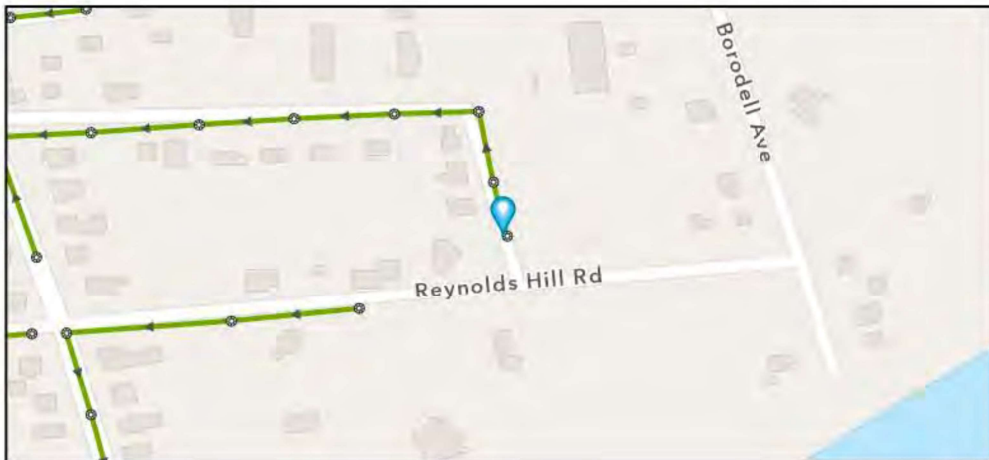
Street: SUMMIT ST

GIS MH No: 1-119A

Type of Manhole: SANITARY SEWER (GRAVITY)

Inspection Status: SURFACE INSPECTION: LEVEL 1 (NO MANHOLE ENTRY)

Manhole Location and Configuration



Inspection Photos



**Manhole Inspection Form****Manhole Information****Inspector:** BM AND JC5**Date:** 5/6/2022**Weather:** DRY (NO PRECIPITATION DURING SURVEY)**GIS MH No:** 1-119A**Type of Manhole:** SANITARY SEWER (GRAVITY)**Inspection Status:** SURFACE INSPECTION: LEVEL 1 (NO MANHOLE ENTRY)**Street:** SUMMIT ST**Location:** LOCAL RURAL STREETS**Rim to Invert (ft):** 5**Grade to Rim (in):** 0**Manhole Infiltration****Surcharge:** NO**Number of Holes:** 0**Infiltration:** NO**Metal Riser:** NO**Manhole Characteristics**

Location in MH	Mtrl. Code	Infil. Code	Cond. Code	Repair Codes	Comments
Frame/Cover	CAST IRON	WEEPER	SOUND	NONE	
Chimney	BRICK	NONE	DEFECTIVE	RESET EXISTING FRAME AND CHIMNEY	CHIMNEY BRICKS ARE BECOMING DISPLACED
Cone	CONCRETE (PRECAST)	NONE	SOUND	NONE	
Wall	CONCRETE (PRECAST)	NONE	SOUND	NONE	
Bench	BRICK	NONE	SOUND	NONE	
Invert/Channel	BRICK	NONE	SOUND	NONE	

Invert Information

Pipe	Direction	Rim to Invert	Pipe Dia. (in)	Pipe Mtrl. Code	Clock Position*	Comments
Pipe 1	OUT	5	8	ASBESTOS CONCRETE	06:00	
Pipe 2						
Pipe 3						
Pipe 4						
Pipe 5						

**Additional
Comments**



Manhole Inspection Form

Manhole Information

Inspector: BM/JC

Date: 5/12/2022

Weather: DRY (NO PRECIPITATION DURING SURVEY)

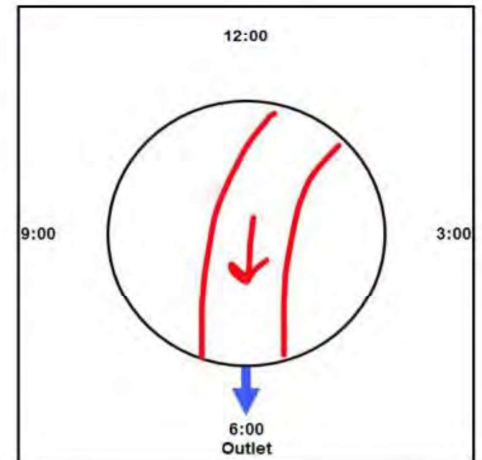
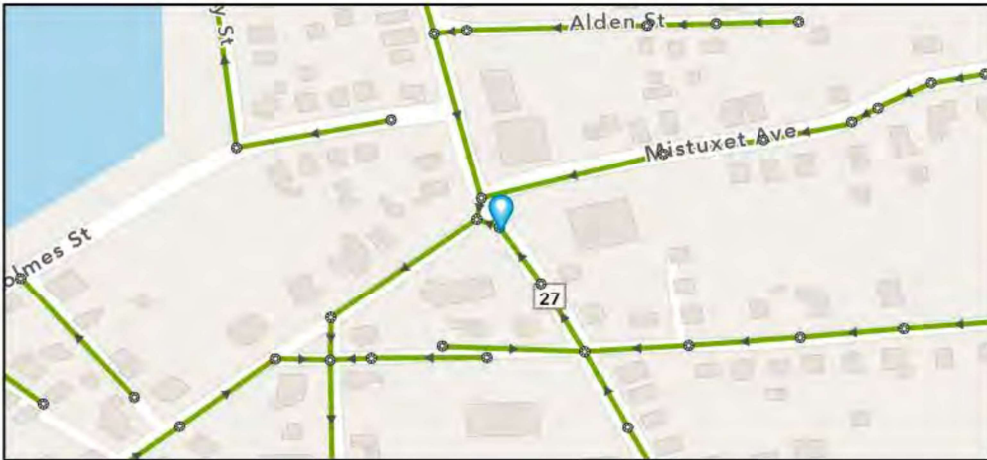
Street: ROUTE 27

GIS MH No: 1-121

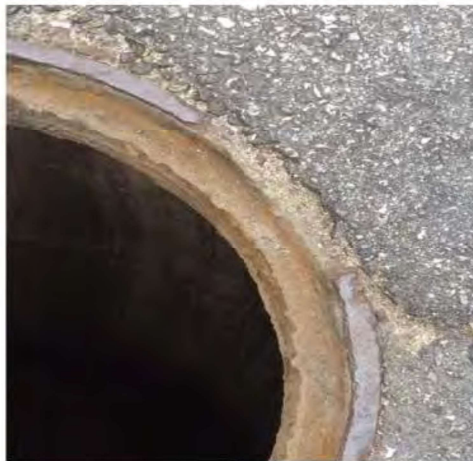
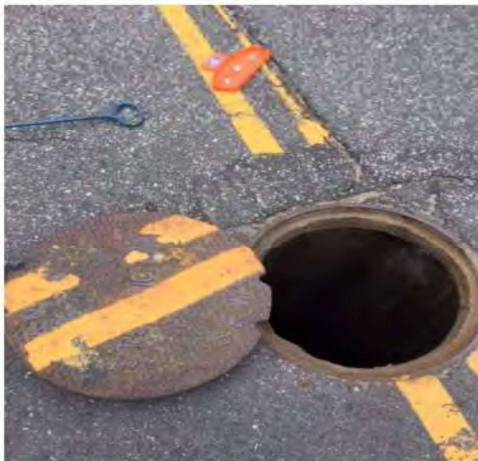
Type of Manhole: SANITARY SEWER (GRAVITY)

Inspection Status: SURFACE INSPECTION: LEVEL 1 (NO MANHOLE ENTRY)

Manhole Location and Configuration



Inspection Photos





Town of Stonington, Connecticut

Manhole Inspection Form

Manhole Information

Inspector: BM/JC GIS MH No: 1-121
Date: 5/12/2022 Type of Manhole: SANITARY SEWER (GRAVITY)
Weather: DRY (NO PRECIPITATION DURING SURVEY) Inspection Status: SURFACE INSPECTION: LEVEL 1 (NO MANHOLE ENTRY)
Street: ROUTE 27 Rim to Invert (ft): 10.75
Location: PRIMARY ARTERIAL ROADS Grade to Rim (in): 0

Manhole Infiltration

Surcharge: NO Number of Holes: 0
Infiltration: NO Metal Riser: YES

Manhole Characteristics

Location in MH	Mtrl. Code	Infil. Code	Cond. Code	Repair Codes	Comments
Frame/Cover	CAST IRON	WEEPER	BROKEN	REPLACE FRAME AND COVER	
Chimney	BRICK	NONE	SOUND	NONE	
Cone	CONCRETE (PRECAST)	NONE	SOUND	NONE	
Wall	CONCRETE (PRECAST)	NONE	SOUND	NONE	
Bench	BRICK	NONE	SOUND	NONE	
Invert/Channel	BRICK	NONE	SOUND	NONE	

Invert Information

Pipe	Direction	Rim to Invert	Pipe Dia. (in)	Pipe Mtrl. Code	Clock Position*	Comments
Pipe 1	OUT	10.75	8	ASBESTOS CONCRETE	06:00	
Pipe 2	IN	10.75	8	ASBESTOS CONCRETE	01:00	
Pipe 3						
Pipe 4						
Pipe 5						

Additional
Comments

*6:00 is outlet



CDM
Smith

Town of Stonington, Connecticut

Manhole Inspection Form

Manhole Information

Inspector: BM/JC

Date: 5/12/2022

Weather: DRY (NO PRECIPITATION DURING SURVEY)

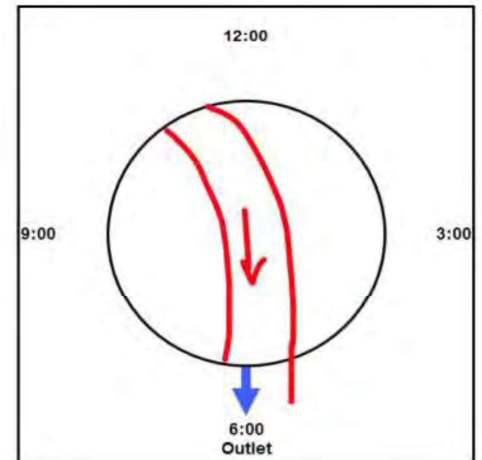
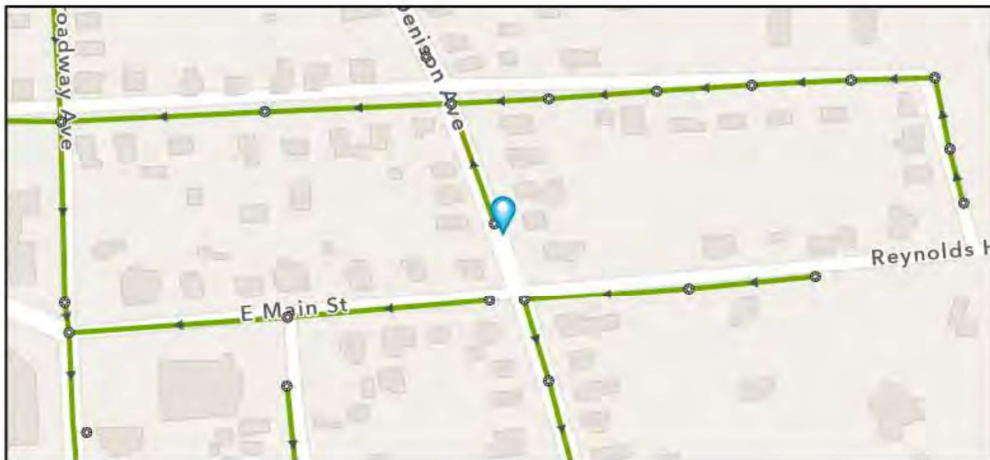
Street: 39 DENISON AVE (ROUTE 27)

GIS MH No: 1-128

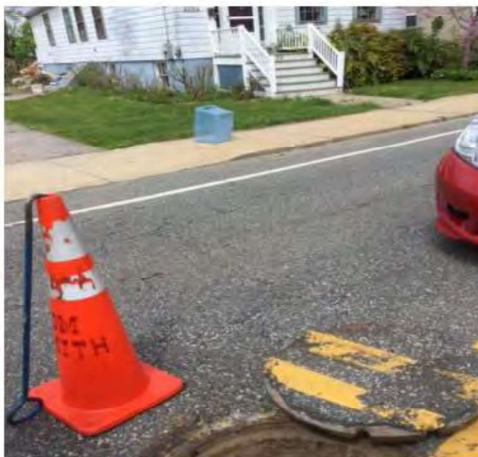
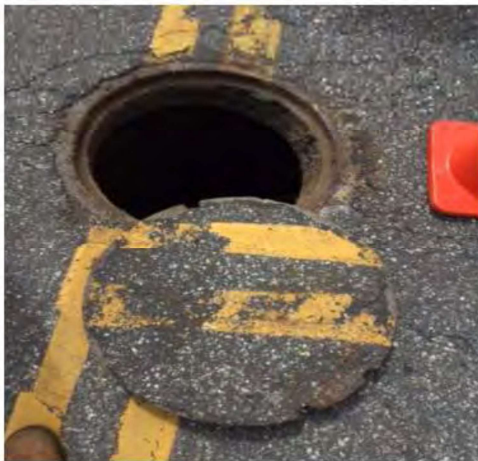
Type of Manhole: SANITARY SEWER (GRAVITY)

Inspection Status: SURFACE INSPECTION: LEVEL 1 (NO MANHOLE ENTRY)

Manhole Location and Configuration



Inspection Photos



**Manhole Inspection Form****Manhole Information**

Inspector: BM/JC **GIS MH No:** 1-128
Date: 5/12/2022 **Type of Manhole:** SANITARY SEWER (GRAVITY)
Weather: DRY (NO PRECIPITATION DURING SURVEY) **Inspection Status:** SURFACE INSPECTION: LEVEL 1 (NO MANHOLE ENTRY)
Street: 39 DENISON AVE (ROUTE 27) **Rim to Invert (ft):** 7.75
Location: PRIMARY ARTERIAL ROADS **Grade to Rim (in):** 0

Manhole Infiltration

Surcharge: NO **Number of Holes:** 0
Infiltration: NO **Metal Riser:** YES

Manhole Characteristics

Location in MH	Mtrl. Code	Infil. Code	Cond. Code	Repair Codes	Comments
Frame/Cover	CAST IRON	WEEPER	CORRODED	REPLACE FRAME AND COVER	
Chimney	CONCRETE BLOCK	NONE	SOUND	NONE	
Cone	CONCRETE (PRECAST)	NONE	SOUND	NONE	
Wall	CONCRETE (PRECAST)	NONE	SOUND	NONE	
Bench	BRICK	NONE	SOUND	NONE	
Invert/Channel	BRICK	NONE	SOUND	NONE	

Invert Information

Pipe	Direction	Rim to Invert	Pipe Dia. (in)	Pipe Mtrl. Code	Clock Position*	Comments
Pipe 1	OUT	7.75	8	ASBESTOS CONCRETE	06:00	
Pipe 2	IN	7.75	8	ASBESTOS CONCRETE	11:00	LATERAL
Pipe 3						
Pipe 4						
Pipe 5						

Additional
Comments



CDM
Smith

Town of Stonington, Connecticut

Manhole Inspection Form

Manhole Information

Inspector: JC/BM

Date: 5/12/2022

Weather: DRY (NO PRECIPITATION DURING SURVEY)

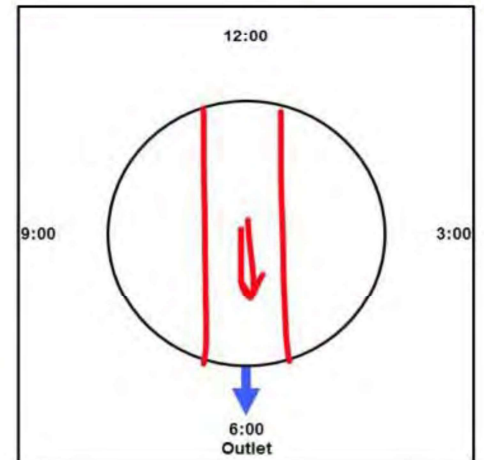
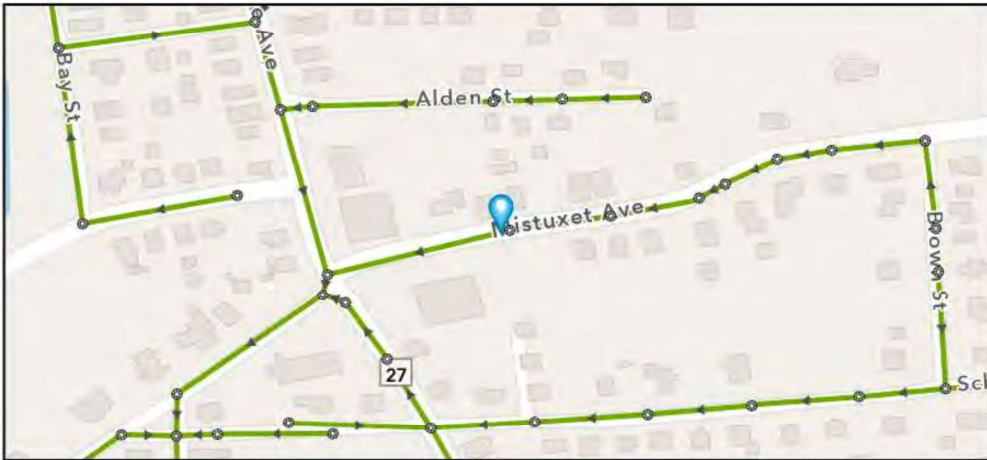
Street: 13 MISTUXET AVE

GIS MH No: 1-137

Type of Manhole: SANITARY SEWER (GRAVITY)

Inspection Status: SURFACE INSPECTION: LEVEL 1 (NO MANHOLE ENTRY)

Manhole Location and Configuration



Inspection Photos





Town of Stonington, Connecticut

Manhole Inspection Form

Manhole Information

Inspector: JC/BM

Date: 5/12/2022

Weather: DRY (NO PRECIPITATION DURING SURVEY)

Street: 13 MISTUXET AVE

Location: SECONDARY ROADS

GIS MH No: 1-137

Type of Manhole: SANITARY SEWER (GRAVITY)

Inspection Status: SURFACE INSPECTION: LEVEL 1 (NO MANHOLE ENTRY)

Rim to Invert (ft): 9

Grade to Rim (in): 0

Manhole Infiltration

Surcharge: NO

Infiltration: NO

Number of Holes: 0

Metal Riser: YES

Manhole Characteristics

Location in MH	Mtrl. Code	Infil. Code	Cond. Code	Repair Codes	Comments
Frame/Cover	CAST IRON	NONE	SOUND	NONE	
Chimney	BRICK	STAINS	DEFECTIVE	REBUILD TOP, REPLACE FRAME AND CHIMNEY	CHIMNEY MATERIAL STARTING TO DEGRADE
Cone	CONCRETE (PRECAST)	STAINS	SOUND	NONE	
Wall	CONCRETE (PRECAST)	NONE	SOUND	NONE	
Bench	BRICK	NONE	SOUND	NONE	
Invert/Channel	BRICK	NONE	SOUND	NONE	

Invert Information

Pipe	Direction	Rim to Invert	Pipe Dia. (in)	Pipe Mtrl. Code	Clock Position*	Comments
Pipe 1	OUT	9	8	ASBESTOS CONCRETE	06:00	
Pipe 2	IN	9	8	ASBESTOS CONCRETE	12:00	
Pipe 3						
Pipe 4						
Pipe 5						

Additional
Comments

*6:00 is outlet



CDM
Smith

Town of Stonington, Connecticut

Manhole Inspection Form

Manhole Information

Inspector: JC/BM

Date: 5/12/2022

Weather: DRY (NO PRECIPITATION DURING SURVEY)

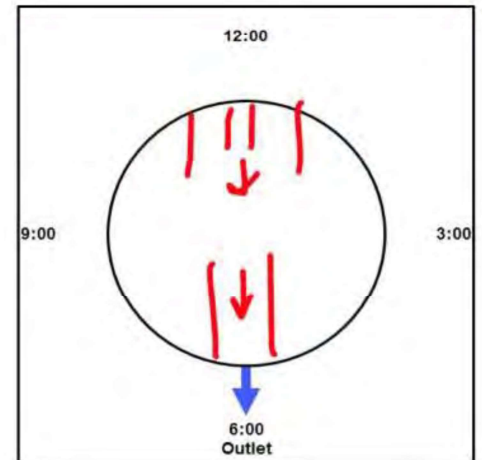
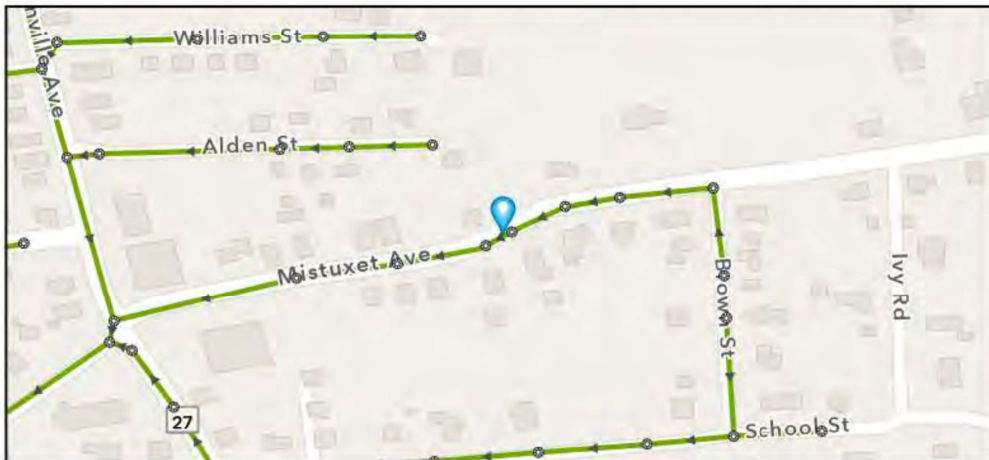
Street: MISTUXET AVE

GIS MH No: 1-139A

Type of Manhole: SANITARY SEWER (GRAVITY)

Inspection Status: SURFACE INSPECTION: LEVEL 1 (NO MANHOLE ENTRY)

Manhole Location and Configuration



Inspection Photos





Town of Stonington, Connecticut

Manhole Inspection Form

Manhole Information

Inspector: JC/BM GIS MH No: 1-139A
Date: 5/12/2022 Type of Manhole: SANITARY SEWER (GRAVITY)
Weather: DRY (NO PRECIPITATION DURING SURVEY) Inspection Status: SURFACE INSPECTION: LEVEL 1 (NO MANHOLE ENTRY)
Street: MISTUXET AVE Rim to Invert (ft): 9.75
Location: SECONDARY ROADS Grade to Rim (in): 0

Manhole Infiltration

Surcharge: NO Number of Holes: 0
Infiltration: NO Metal Riser: YES

Manhole Characteristics

Location in MH	Mtrl. Code	Infil. Code	Cond. Code	Repair Codes	Comments
Frame/Cover	CAST IRON	STAINS	SOUND	NONE	
Chimney	BRICK	NONE	DEFECTIVE	REBUILD TOP, REPLACE FRAME AND CHIMNEY	CHIMNEY NOT FLUSH WITH FRAME, SOME MATERIAL LOOSE. CHIMNEY IS BRICK AND CONCRETE BLOCK
Cone	CONCRETE (PRECAST)	NONE	SOUND	NONE	
Wall	CONCRETE (PRECAST)	NONE	SOUND	NONE	
Bench	BRICK	NONE	SOUND	NONE	
Invert/Channel	BRICK	NONE	SOUND	NONE	

Invert Information

Pipe	Direction	Rim to Invert	Pipe Dia. (in)	Pipe Mtrl. Code	Clock Position*	Comments
Pipe 1	OUT	9.75	8	ASBESTOS CONCRETE	06:00	
Pipe 2	IN	3.5	8	ASBESTOS CONCRETE	12:00	TOP OF DROP. BRICK IN INVERT OF PIPE, MAY BE BLOCKING FLOW
Pipe 3	IN	9.75	8	ASBESTOS CONCRETE	12:00	BOTTOM OF DROP
Pipe 4						
Pipe 5						

Additional Comments 3.5 TO DROP



CDM
Smith

Town of Stonington, Connecticut

Manhole Inspection Form

Manhole Information

Inspector: BM AND JC

Date: 5/4/2022

Weather: DRY (NO PRECIPITATION DURING SURVEY)

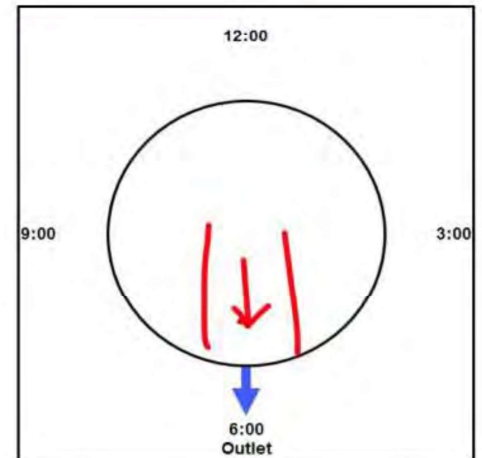
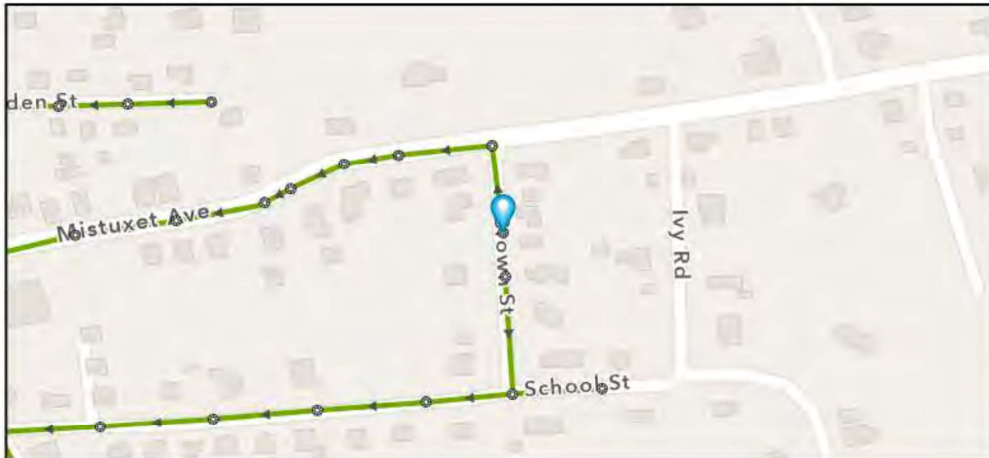
Street: 12 BROWN STREET

GIS MH No: 1-143

Type of Manhole: SANITARY SEWER (GRAVITY)

Inspection Status: SURFACE INSPECTION: LEVEL 1 (NO MANHOLE ENTRY)

Manhole Location and Configuration



Inspection Photos



**Manhole Inspection Form****Manhole Information****Inspector:** BM AND JC**Date:** 5/4/2022**Weather:** DRY (NO PRECIPITATION DURING SURVEY)**GIS MH No:** 1-143**Type of Manhole:** SANITARY SEWER (GRAVITY)**Inspection Status:** SURFACE INSPECTION: LEVEL 1 (NO MANHOLE ENTRY)**Street:** 12 BROWN STREET**Location:** LOCAL RURAL STREETS**Rim to Invert (ft):** 9**Grade to Rim (in):** 0**Manhole Infiltration****Surcharge:** NO**Infiltration:** NO**Number of Holes:** 0**Metal Riser:** YES**Manhole Characteristics**

Location in MH	Mtrl. Code	Infil. Code	Cond. Code	Repair Codes	Comments
Frame/Cover	CAST IRON	WEEPER	SOUND	NONE	
Chimney	OTHER (DESCRIBE IN DETAILS)	NONE	SOUND	NONE	
Cone	CONCRETE (PRECAST)	NONE	SOUND	NONE	
Wall	CONCRETE (PRECAST)	NONE	SOUND	NONE	
Bench	BRICK	NONE	SOUND	NONE	
Invert/Channel	BRICK	NONE	SOUND	NONE	

Invert Information

Pipe	Direction	Rim to Invert	Pipe Dia. (in)	Pipe Mtrl. Code	Clock Position*	Comments
Pipe 1	OUT	9	8	VITRIFIED CLAY PIPE	06:00	
Pipe 2						
Pipe 3						
Pipe 4						
Pipe 5						

**Additional
Comments**



**CDM
Smith**

Town of Stonington, Connecticut

Manhole Inspection Form

Manhole Information

Inspector: BM AND JC

Date: 5/4/2022

Weather: DRY (NO PRECIPITATION DURING SURVEY)

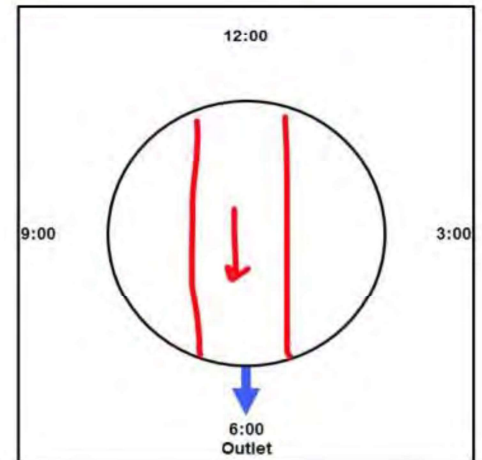
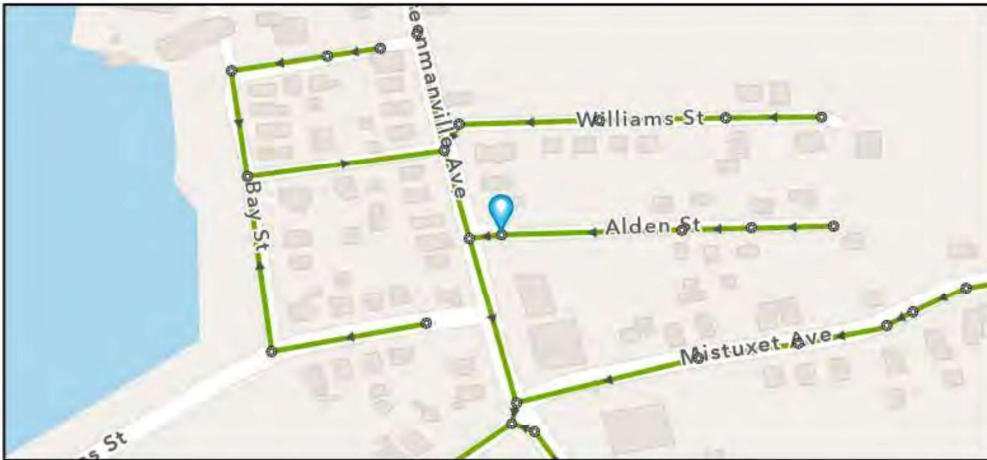
Street: ALDEN STREET

GIS MH No: 1-150

Type of Manhole: SANITARY SEWER (GRAVITY)

Inspection Status: SURFACE INSPECTION: LEVEL 1 (NO MANHOLE ENTRY)

Manhole Location and Configuration



Inspection Photos



**Manhole Inspection Form****Manhole Information****Inspector:** BM AND JC**Date:** 5/4/2022**Weather:** DRY (NO PRECIPITATION DURING SURVEY)**GIS MH No:** 1-150**Type of Manhole:** SANITARY SEWER (GRAVITY)**Inspection Status:** SURFACE INSPECTION: LEVEL 1 (NO MANHOLE ENTRY)**Street:** ALDEN STREET**Location:** LOCAL RURAL STREETS**Rim to Invert (ft):** 8.5**Grade to Rim (in):** 0**Manhole Infiltration****Surcharge:** NO**Number of Holes:** 0**Infiltration:** NO**Metal Riser:** NO**Manhole Characteristics**

Location in MH	Mtrl. Code	Infil. Code	Cond. Code	Repair Codes	Comments
Frame/Cover	CAST IRON	NONE	SOUND	NONE	
Chimney	OTHER (DESCRIBE IN DETAILS)	NONE	SOUND	NONE	NO CHIMNEY
Cone	CONCRETE (PRECAST)	NONE	SOUND	NONE	
Wall	CONCRETE (PRECAST)	NONE	SOUND	NONE	
Bench	BRICK	NONE	SOUND	NONE	
Invert/Channel	BRICK	NONE	SOUND	NONE	

Invert Information

Pipe	Direction	Rim to Invert	Pipe Dia. (in)	Pipe Mtrl. Code	Clock Position*	Comments
Pipe 1	OUT	8.5	8	POLY VINYL CHLORIDE	06:00	
Pipe 2	IN	8.5	8	POLY VINYL CHLORIDE	12:00	
Pipe 3						
Pipe 4						
Pipe 5						

**Additional
Comments**



CDM
Smith

Town of Stonington, Connecticut

Manhole Inspection Form

Manhole Information

Inspector: BM AK

Date: 9/8/2022

Weather: DRY (NO PRECIPITATION DURING SURVEY)

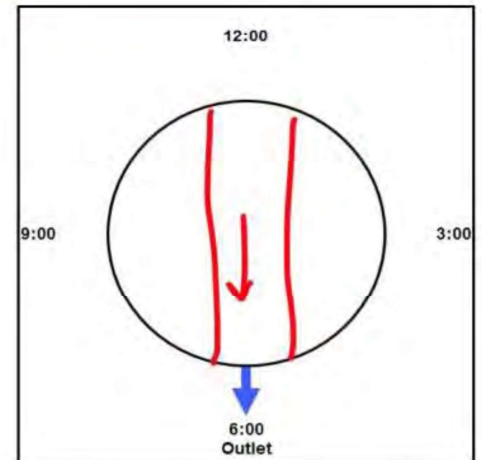
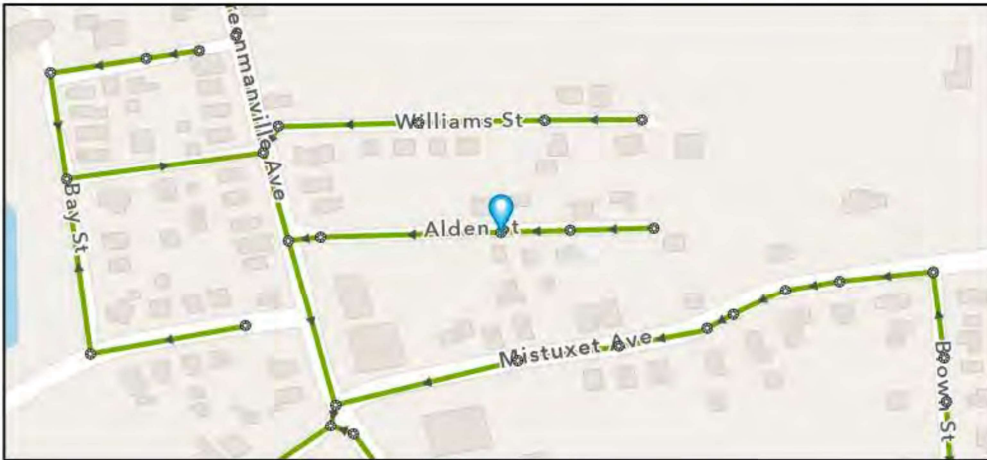
Street: ALDEN STREET

GIS MH No: 1-151

Type of Manhole: SANITARY SEWER (GRAVITY)

Inspection Status: SURFACE INSPECTION: LEVEL 1 (NO MANHOLE ENTRY)

Manhole Location and Configuration



Inspection Photos





Town of Stonington, Connecticut

Manhole Inspection Form

Manhole Information

Inspector: BM AK
Date: 9/8/2022
Weather: DRY (NO PRECIPITATION DURING SURVEY)
Street: ALDEN STREET
Location: LOCAL RURAL STREETS

GIS MH No: 1-151
Type of Manhole: SANITARY SEWER (GRAVITY)
Inspection Status: SURFACE INSPECTION: LEVEL 1 (NO MANHOLE ENTRY)
Rim to Invert (ft): 6.75
Grade to Rim (in): 0

Manhole Infiltration

Surcharge: NO
Infiltration: NO

Number of Holes: 0
Metal Riser: NO

Manhole Characteristics

Location in MH	Mtrl. Code	Infil. Code	Cond. Code	Repair Codes	Comments
Frame/Cover	CAST IRON	NONE	BROKEN	REPLACE FRAME AND COVER	ALSO REPLACE WATER TIGHT COVER, NO HANDLES
Chimney	CONCRETE (PRECAST)	NONE	SOUND	NONE	
Cone	CONCRETE (PRECAST)	NONE	SOUND	NONE	
Wall	CONCRETE (PRECAST)	NONE	SOUND	NONE	
Bench	BRICK	NONE	SOUND	NONE	
Invert/Channel	BRICK	NONE	SOUND	NONE	

Invert Information

Pipe	Direction	Rim to Invert	Pipe Dia. (in)	Pipe Mtrl. Code	Clock Position*	Comments
Pipe 1	OUT	6.75	8	POLY VINYL CHLORIDE	06:00	
Pipe 2	IN	6.5	8	POLY VINYL CHLORIDE	12:00	
Pipe 3						
Pipe 4						
Pipe 5						

Additional
Comments

*6:00 is outlet



CDM
Smith

Town of Stonington, Connecticut

Manhole Inspection Form

Manhole Information

Inspector: BM AND JC

Date: 5/4/2022

Weather: DRY (NO PRECIPITATION DURING SURVEY)

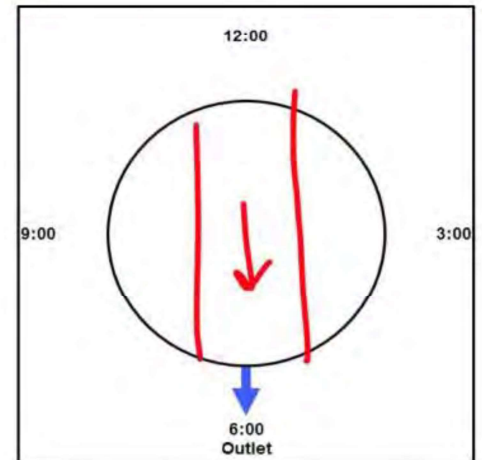
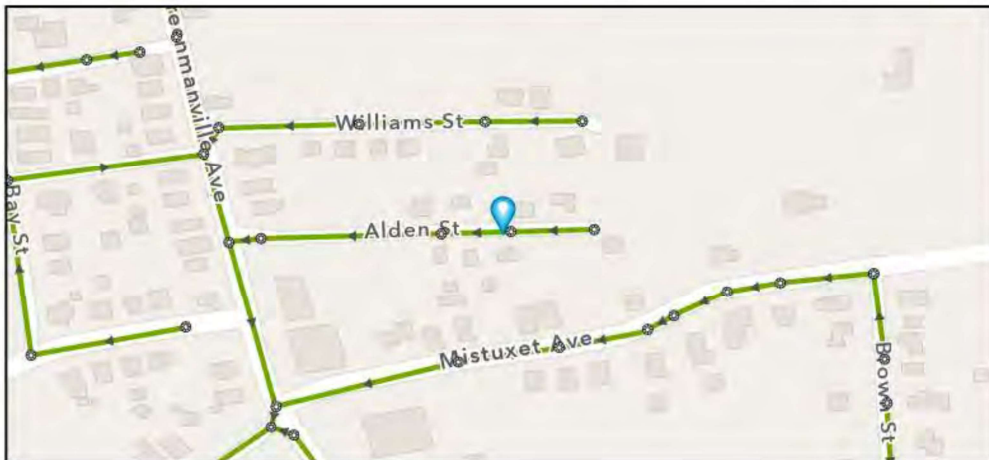
Street: ALDEN STREET

GIS MH No: 1-152

Type of Manhole: SANITARY SEWER (GRAVITY)

Inspection Status: SURFACE INSPECTION: LEVEL 1 (NO MANHOLE ENTRY)

Manhole Location and Configuration



Inspection Photos



**Manhole Inspection Form****Manhole Information****Inspector:** BM AND JC**Date:** 5/4/2022**Weather:** DRY (NO PRECIPITATION DURING SURVEY)**GIS MH No:** 1-152**Type of Manhole:** SANITARY SEWER (GRAVITY)**Inspection Status:** SURFACE INSPECTION: LEVEL 1 (NO MANHOLE ENTRY)**Street:** ALDEN STREET**Location:** LOCAL RURAL STREETS**Rim to Invert (ft):** 9**Grade to Rim (in):** 0**Manhole Infiltration****Surcharge:** NO**Number of Holes:** 0**Infiltration:** NO**Metal Riser:** NO**Manhole Characteristics**

Location in MH	Mtrl. Code	Infil. Code	Cond. Code	Repair Codes	Comments
Frame/Cover	CAST IRON	NONE	SOUND	NONE	
Chimney	BRICK	NONE	SOUND	NONE	
Cone	CONCRETE (CAST IN PLACE)	NONE	SOUND	NONE	
Wall	CONCRETE (PRECAST)	NONE	SOUND	NONE	
Bench	BRICK	NONE	SOUND	NONE	
Invert/Channel	BRICK	NONE	SOUND	NONE	

Invert Information

Pipe	Direction	Rim to Invert	Pipe Dia. (in)	Pipe Mtrl. Code	Clock Position*	Comments
Pipe 1	OUT	9	8	POLY VINYL CHLORIDE	06:00	
Pipe 2	IN	9	8	POLY VINYL CHLORIDE	12:00	
Pipe 3						
Pipe 4						
Pipe 5						

**Additional
Comments**



CDM
Smith

Town of Stonington, Connecticut

Manhole Inspection Form

Manhole Information

Inspector: BM AND JC

Date: 5/4/2022

Weather: DRY (NO PRECIPITATION DURING SURVEY)

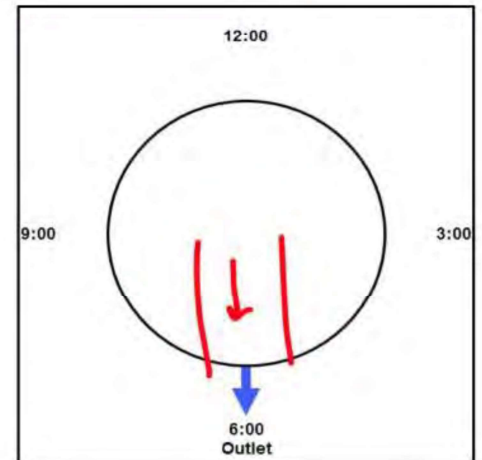
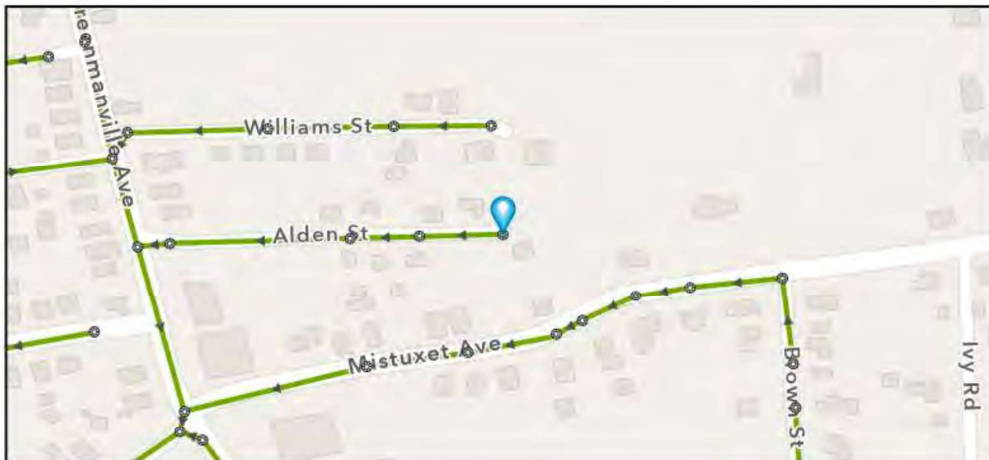
Street: 13 ALDEN STREET

GIS MH No: 1-153

Type of Manhole: SANITARY SEWER (GRAVITY)

Inspection Status: SURFACE INSPECTION: LEVEL 1 (NO MANHOLE ENTRY)

Manhole Location and Configuration



Inspection Photos



**Manhole Inspection Form****Manhole Information****Inspector:** BM AND JC**Date:** 5/4/2022**Weather:** DRY (NO PRECIPITATION DURING SURVEY)**GIS MH No:** 1-153**Type of Manhole:** SANITARY SEWER (GRAVITY)**Inspection Status:** SURFACE INSPECTION: LEVEL 1 (NO MANHOLE ENTRY)**Street:** 13 ALDEN STREET**Location:** LOCAL RURAL STREETS**Rim to Invert (ft):** 8.5**Grade to Rim (in):** 0**Manhole Infiltration****Surcharge:** NO**Number of Holes:** 0**Infiltration:** NO**Metal Riser:** NO**Manhole Characteristics**

Location in MH	Mtrl. Code	Infil. Code	Cond. Code	Repair Codes	Comments
Frame/Cover	CAST IRON	WEEPER	SOUND	NONE	
Chimney	BRICK	NONE	SOUND	NONE	
Cone	CONCRETE (PRECAST)	NONE	SOUND	NONE	
Wall	CONCRETE (PRECAST)	NONE	SOUND	NONE	
Bench	BRICK	NONE	SOUND	NONE	
Invert/Channel	BRICK	NONE	SOUND	NONE	

Invert Information

Pipe	Direction	Rim to Invert	Pipe Dia. (in)	Pipe Mtrl. Code	Clock Position*	Comments
Pipe 1	OUT	8.5	8	POLY VINYL CHLORIDE	06:00	
Pipe 2						
Pipe 3						
Pipe 4						
Pipe 5						

**Additional
Comments**



Manhole Inspection Form

Manhole Information

Inspector: BM AND JC

Date: 5/4/2022

Weather: DRY (NO PRECIPITATION DURING SURVEY)

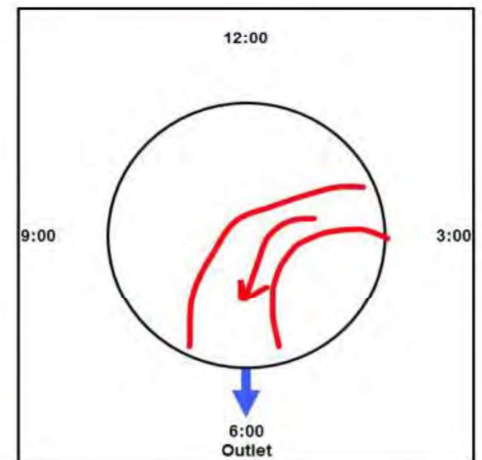
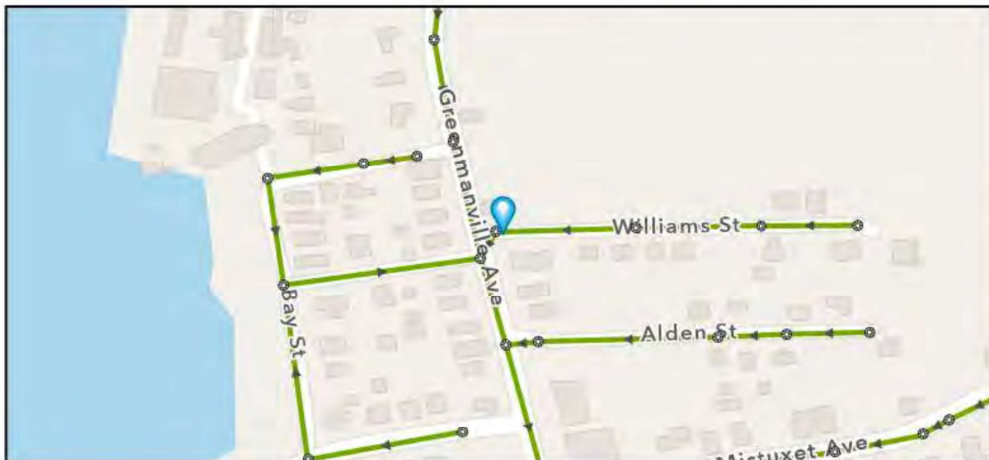
Street: 22 WILLIAMS ST

GIS MH No: 1-154

Type of Manhole: SANITARY SEWER (GRAVITY)

Inspection Status: SURFACE INSPECTION: LEVEL 1 (NO MANHOLE ENTRY)

Manhole Location and Configuration



Inspection Photos



**Manhole Inspection Form****Manhole Information****Inspector:** BM AND JC**Date:** 5/4/2022**Weather:** DRY (NO PRECIPITATION DURING SURVEY)**GIS MH No:** 1-154**Type of Manhole:** SANITARY SEWER (GRAVITY)**Inspection Status:** SURFACE INSPECTION: LEVEL 1 (NO MANHOLE ENTRY)**Street:** 22 WILLIAMS ST**Location:** LOCAL RURAL STREETS**Rim to Invert (ft):** 9.5**Grade to Rim (in):** 0**Manhole Infiltration****Surcharge:** NO**Number of Holes:** 0**Infiltration:** YES**Metal Riser:** NO**Manhole Characteristics**

Location in MH	Mtrl. Code	Infil. Code	Cond. Code	Repair Codes	Comments
Frame/Cover	CAST IRON	NONE	SOUND	NONE	LOOKS LIKE FRAME SHOULD HAVE WATERTIGHT SEAL BUT DOES NOT.
Chimney	OTHER (DESCRIBE IN DETAILS)	NONE	SOUND	NONE	NO CHIMNEY
Cone	CONCRETE (PRECAST)	NONE	SOUND	NONE	
Wall	CONCRETE (PRECAST)	WEEPER	DEFECTIVE	LINE_MANHOLE	LOOKS LIKE SEDIMENT AND INFILTRATION FROM WALL AT 3 PM
Bench	BRICK	NONE	SOUND	NONE	
Invert/Channel	BRICK	NONE	SOUND	NONE	

Invert Information

Pipe	Direction	Rim to Invert	Pipe Dia. (in)	Pipe Mtrl. Code	Clock Position*	Comments
Pipe 1	OUT	9.5	8	POLY VINYL CHLORIDE	06:00	
Pipe 2	IN	9.5	8	POLY VINYL CHLORIDE	02:00	
Pipe 3						
Pipe 4						
Pipe 5						

**Additional
Comments**



**CDM
Smith**

Town of Stonington, Connecticut

Manhole Inspection Form

Manhole Information

Inspector: BM/JC

Date: 5/18/2022

Weather: DRY (NO PRECIPITATION DURING SURVEY)

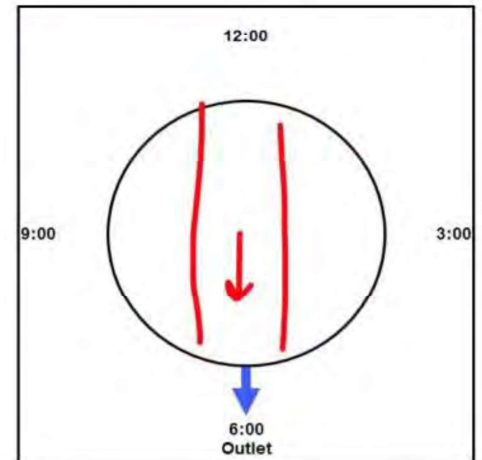
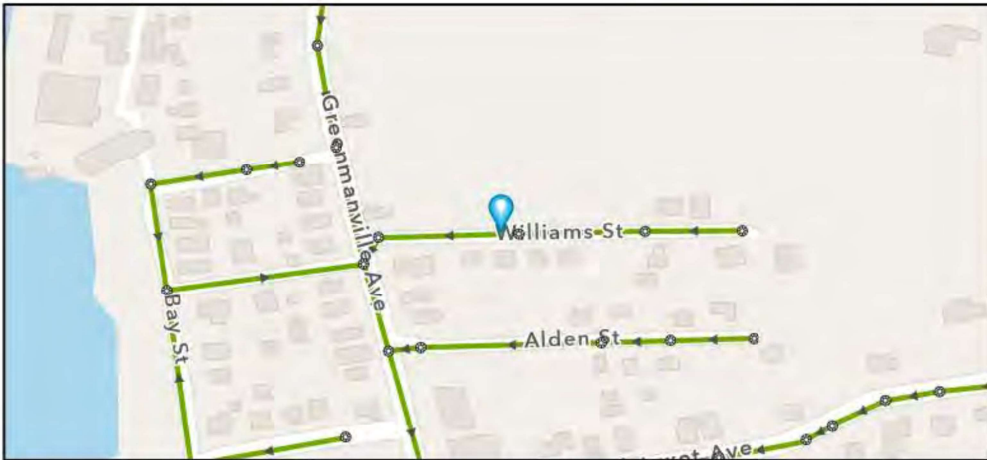
Street: 10 WILLIAMS STREET

GIS MH No: 1-155

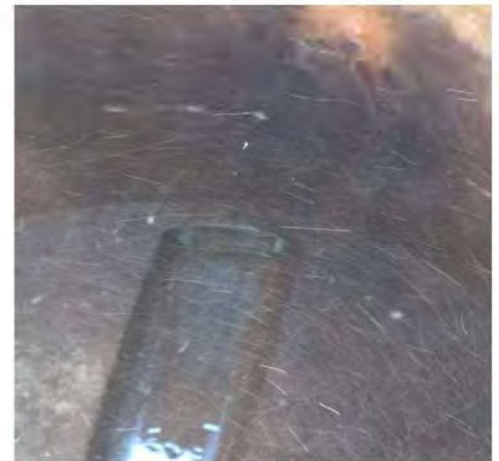
Type of Manhole: SANITARY SEWER (GRAVITY)

Inspection Status: SURFACE INSPECTION: LEVEL 1 (NO MANHOLE ENTRY)

Manhole Location and Configuration



Inspection Photos





Town of Stonington, Connecticut

Manhole Inspection Form

Manhole Information

Inspector: BM/JC GIS MH No: 1-155
Date: 5/18/2022 Type of Manhole: SANITARY SEWER (GRAVITY)
Weather: DRY (NO PRECIPITATION DURING SURVEY) Inspection Status: SURFACE INSPECTION: LEVEL 1 (NO MANHOLE ENTRY)
Street: 10 WILLIAMS STREET Rim to Invert (ft): 8
Location: LOCAL RURAL STREETS Grade to Rim (in): 0

Manhole Infiltration

Surcharge: NO Number of Holes: 0
Infiltration: YES Metal Riser: NO

Manhole Characteristics

Location in MH	Mtrl. Code	Infil. Code	Cond. Code	Repair Codes	Comments
Frame/Cover	CAST IRON	WEEPER	BROKEN	REPLACE FRAME AND COVER	
Chimney	CONCRETE (PRECAST)	NONE	SOUND	NONE	
Cone	CONCRETE (PRECAST)	WEEPER	DEFECTIVE	LINE_MANHOLE	
Wall	CONCRETE (PRECAST)	WEEPER	DEFECTIVE	LINE_MANHOLE	
Bench	BRICK	NONE	SOUND	NONE	
Invert/Channel	BRICK	NONE	SOUND	NONE	

Invert Information

Pipe	Direction	Rim to Invert	Pipe Dia. (in)	Pipe Mtrl. Code	Clock Position*	Comments
Pipe 1	OUT	8	8	POLY VINYL CHLORIDE	06:00	
Pipe 2	IN	8	8	POLY VINYL CHLORIDE	12:00	
Pipe 3						
Pipe 4						
Pipe 5						

Additional
Comments

*6:00 is outlet



CDM
Smith

Town of Stonington, Connecticut

Manhole Inspection Form

Manhole Information

Inspector: BM AND JC

Date: 5/4/2022

Weather: LIGHT RAIN

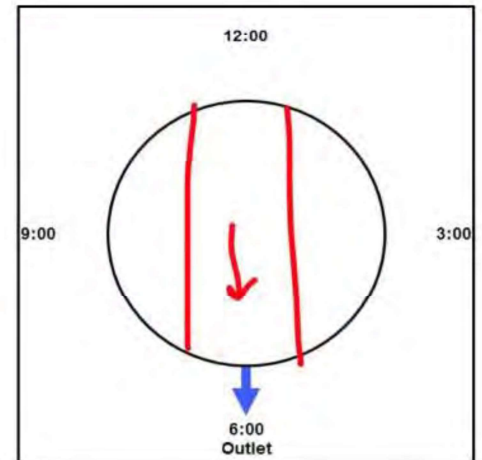
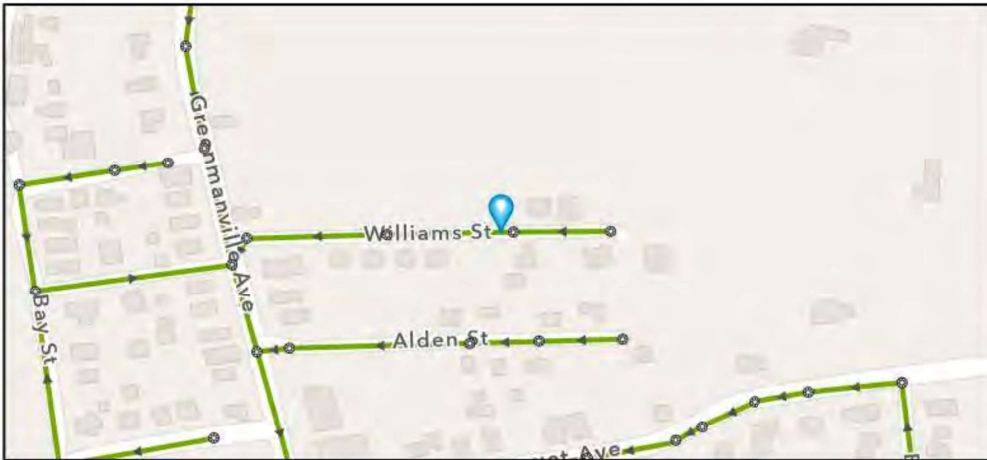
Street: 16 WILLIAMS STREET

GIS MH No: 1-156

Type of Manhole: SANITARY SEWER (GRAVITY)

Inspection Status: SURFACE INSPECTION: LEVEL 1 (NO MANHOLE ENTRY)

Manhole Location and Configuration



Inspection Photos



**Manhole Inspection Form****Manhole Information****Inspector:** BM AND JC**Date:** 5/4/2022**Weather:** LIGHT RAIN**GIS MH No:** 1-156**Type of Manhole:** SANITARY SEWER (GRAVITY)**Inspection Status:** SURFACE INSPECTION: LEVEL 1 (NO MANHOLE ENTRY)**Street:** 16 WILLIAMS STREET**Location:** LOCAL RURAL STREETS**Rim to Invert (ft):** 8**Grade to Rim (in):** 0**Manhole Infiltration****Surcharge:** NO**Number of Holes:** 0**Infiltration:** NO**Metal Riser:** NO**Manhole Characteristics**

Location in MH	Mtrl. Code	Infil. Code	Cond. Code	Repair Codes	Comments
Frame/Cover	CAST IRON	STAINS	SOUND	NONE	MISSING WATER TIGHT COVER
Chimney	OTHER (DESCRIBE IN DETAILS)	NONE	SOUND	NONE	NO CHIMNEY
Cone	CONCRETE (PRECAST)	NONE	SOUND	NONE	
Wall	CONCRETE (PRECAST)	NONE	SOUND	NONE	
Bench	BRICK	NONE	SOUND	NONE	
Invert/Channel	BRICK	NONE	SOUND	NONE	

Invert Information

Pipe	Direction	Rim to Invert	Pipe Dia. (in)	Pipe Mtrl. Code	Clock Position*	Comments
Pipe 1	OUT	8	8	POLY VINYL CHLORIDE	06:00	
Pipe 2	IN	8	8	POLY VINYL CHLORIDE	12:00	
Pipe 3						
Pipe 4						
Pipe 5						

**Additional
Comments**



Town of Stonington, Connecticut

Manhole Inspection Form

Manhole Information

Inspector: BM AND JC

Date: 5/4/2022

Weather: DRY (NO PRECIPITATION DURING SURVEY)

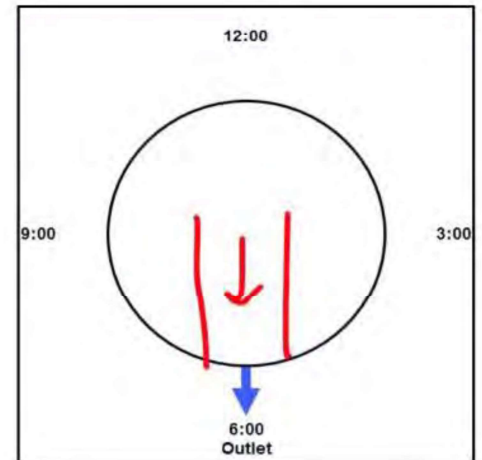
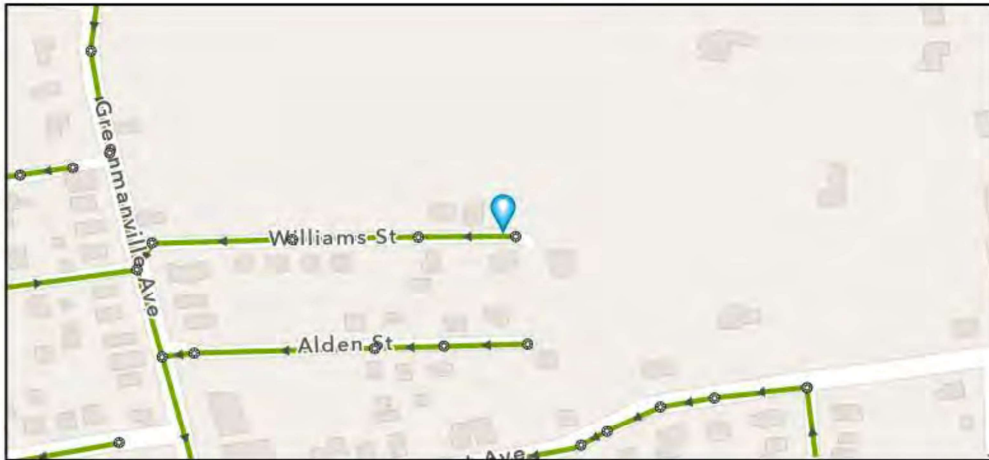
Street: 20 WILLIAMS STREET

GIS MH No: 1-157

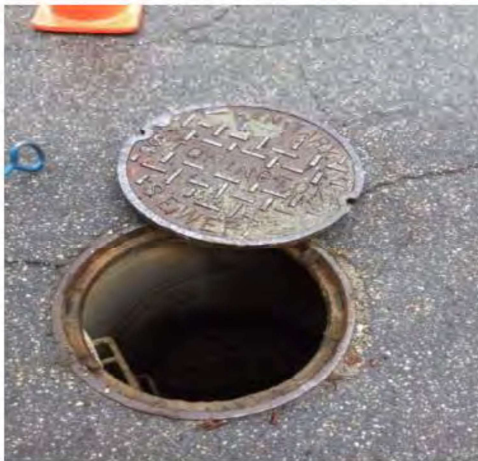
Type of Manhole: SANITARY SEWER (GRAVITY)

Inspection Status: SURFACE INSPECTION: LEVEL 1 (NO MANHOLE ENTRY)

Manhole Location and Configuration



Inspection Photos





Town of Stonington, Connecticut

Manhole Inspection Form

Manhole Information

Inspector: BM AND JC
Date: 5/4/2022
Weather: DRY (NO PRECIPITATION DURING SURVEY)
Street: 20 WILLIAMS STREET
Location: LOCAL RURAL STREETS

GIS MH No: 1-157
Type of Manhole: SANITARY SEWER (GRAVITY)
Inspection Status: SURFACE INSPECTION: LEVEL 1 (NO MANHOLE ENTRY)
Rim to Invert (ft): 9.25
Grade to Rim (in): 0

Manhole Infiltration

Surcharge: NO
Infiltration: NO

Number of Holes: 0
Metal Riser: NO

Manhole Characteristics

Location in MH	Mtrl. Code	Infil. Code	Cond. Code	Repair Codes	Comments
Frame/Cover	CAST IRON	WEEPER	SOUND	NONE	
Chimney	BRICK	NONE	SOUND	NONE	
Cone	CONCRETE (PRECAST)	NONE	SOUND	NONE	
Wall	CONCRETE (PRECAST)	NONE	SOUND	NONE	
Bench	BRICK	NONE	SOUND	NONE	
Invert/Channel	BRICK	NONE	SOUND	NONE	

Invert Information

Pipe	Direction	Rim to Invert	Pipe Dia. (in)	Pipe Mtrl. Code	Clock Position*	Comments
Pipe 1	OUT	9.25	8	POLY VINYL CHLORIDE	06:00	
Pipe 2						
Pipe 3						
Pipe 4						
Pipe 5						

Additional
Comments

*6:00 is outlet



CDM
Smith

Town of Stonington, Connecticut

Manhole Inspection Form

Manhole Information

Inspector: BM AND JC

Date: 5/18/2022

Weather: DRY (NO PRECIPITATION DURING SURVEY)

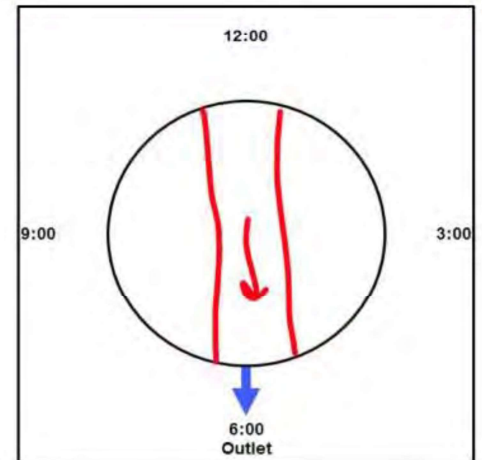
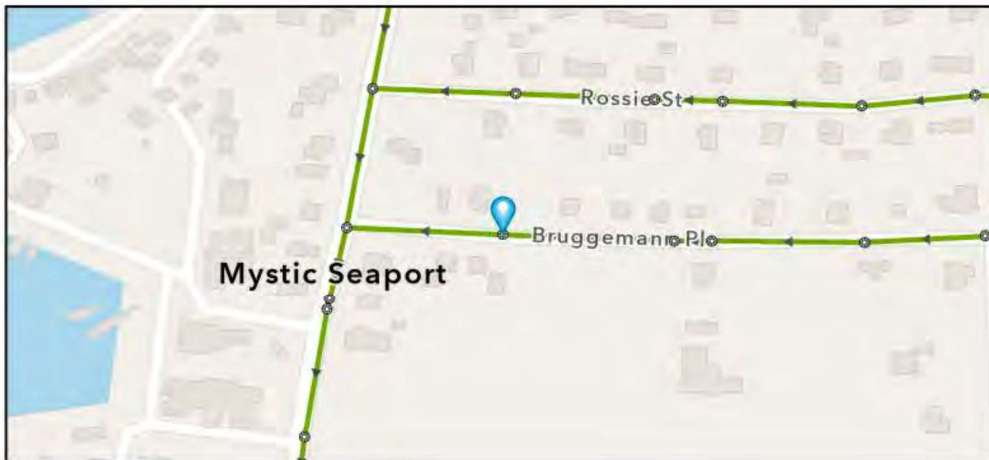
Street: 4 BRUGGEMAN PLACE

GIS MH No: 1-158

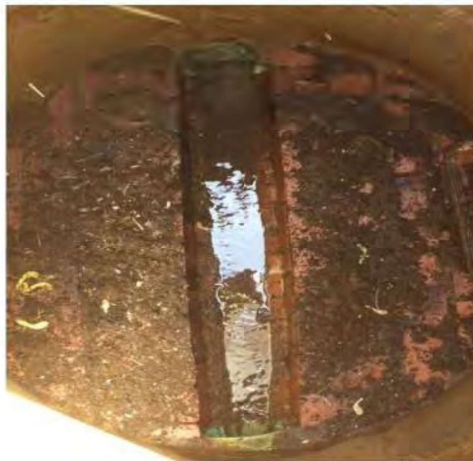
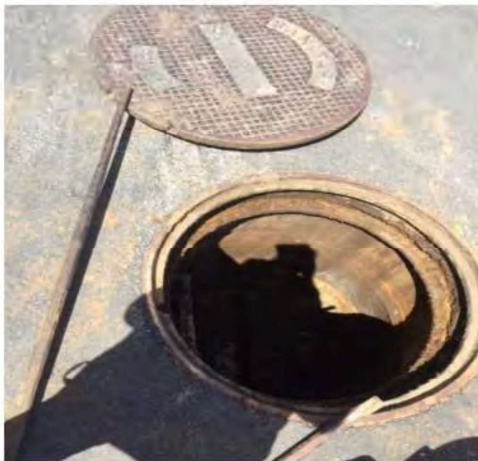
Type of Manhole: SANITARY SEWER (GRAVITY)

Inspection Status: SURFACE INSPECTION: LEVEL 1 (NO MANHOLE ENTRY)

Manhole Location and Configuration



Inspection Photos



**Manhole Inspection Form****Manhole Information****Inspector:** BM AND JC**Date:** 5/18/2022**Weather:** DRY (NO PRECIPITATION DURING SURVEY)**GIS MH No:** 1-158**Type of Manhole:** SANITARY SEWER (GRAVITY)**Inspection Status:** SURFACE INSPECTION: LEVEL 1 (NO MANHOLE ENTRY)**Street:** 4 BRUGGEMAN PLACE**Rim to Invert (ft):** 7**Location:** LOCAL RURAL STREETS**Grade to Rim (in):** 0**Manhole Infiltration****Surcharge:** NO**Number of Holes:** 0**Infiltration:** YES**Metal Riser:** NO**Manhole Characteristics**

Location in MH	Mtrl. Code	Infil. Code	Cond. Code	Repair Codes	Comments
Frame/Cover	CAST IRON	WEEPER	SOUND	OTHER	WATER TIGHT SEAL DOES NOT HAVE HANDLES. REPLACE SEAL
Chimney	CONCRETE (PRECAST)	NONE	SOUND	NONE	
Cone	CONCRETE (PRECAST)	NONE	SOUND	NONE	
Wall	CONCRETE (PRECAST)	STAINS	DEFECTIVE	LINE_MANHOLE	
Bench	BRICK	NONE	SOUND	NONE	
Invert/Channel	BRICK	NONE	SOUND	NONE	

Invert Information

Pipe	Direction	Rim to Invert	Pipe Dia. (in)	Pipe Mtrl. Code	Clock Position*	Comments
Pipe 1	OUT	7	8	POLY VINYL CHLORIDE	06:00	
Pipe 2	IN	7	8	POLY VINYL CHLORIDE	12:00	
Pipe 3						
Pipe 4						
Pipe 5						

**Additional
Comments**