



CDM
Smith

Town of Stonington, Connecticut

Manhole Inspection Form

Manhole Information

Inspector: BM AND JC

Date: 5/4/2022

Weather: DRY (NO PRECIPITATION DURING SURVEY)

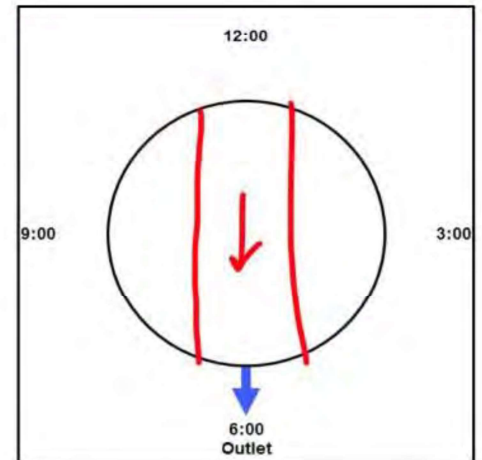
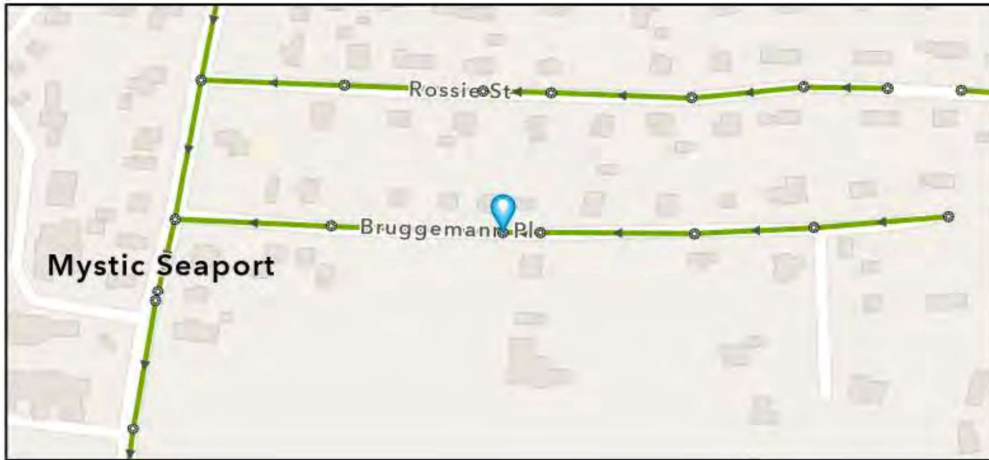
Street: 13 BRUGGEMAN PLACE

GIS MH No: 1-159

Type of Manhole: SANITARY SEWER (GRAVITY)

Inspection Status: SURFACE INSPECTION: LEVEL 1 (NO MANHOLE ENTRY)

Manhole Location and Configuration



Inspection Photos





Town of Stonington, Connecticut

Manhole Inspection Form

Manhole Information

Inspector: BM AND JC

Date: 5/4/2022

Weather: DRY (NO PRECIPITATION DURING SURVEY)

Street: 13 BRUGGEMAN PLACE

Location: LOCAL RURAL STREETS

GIS MH No: 1-159

Type of Manhole: SANITARY SEWER (GRAVITY)

Inspection Status: SURFACE INSPECTION: LEVEL 1 (NO MANHOLE ENTRY)

Rim to Invert (ft): 8.25

Grade to Rim (in): 0

Manhole Infiltration

Surcharge: NO

Infiltration: NO

Number of Holes: 0

Metal Riser: NO

Manhole Characteristics

Location in MH	Mtrl. Code	Infil. Code	Cond. Code	Repair Codes	Comments
Frame/Cover	CAST IRON	WEEPER	SOUND	NONE	
Chimney	OTHER (DESCRIBE IN DETAILS)	NONE	SOUND	NONE	NO CHIMNEY
Cone	CONCRETE (PRECAST)	NONE	SOUND	NONE	
Wall	CONCRETE (PRECAST)	NONE	SOUND	NONE	
Bench	BRICK	NONE	SOUND	NONE	
Invert/Channel	BRICK	NONE	SOUND	NONE	

Invert Information

Pipe	Direction	Rim to Invert	Pipe Dia. (in)	Pipe Mtrl. Code	Clock Position*	Comments
Pipe 1	OUT	8.25	8	POLY VINYL CHLORIDE	06:00	
Pipe 2	IN	8.25	8	POLY VINYL CHLORIDE	12:00	
Pipe 3						
Pipe 4						
Pipe 5						

Additional
Comments

*6:00 is outlet



CDM
Smith

Town of Stonington, Connecticut

Manhole Inspection Form

Manhole Information

Inspector: BM AND JC

Date: 5/4/2022

Weather: LIGHT RAIN

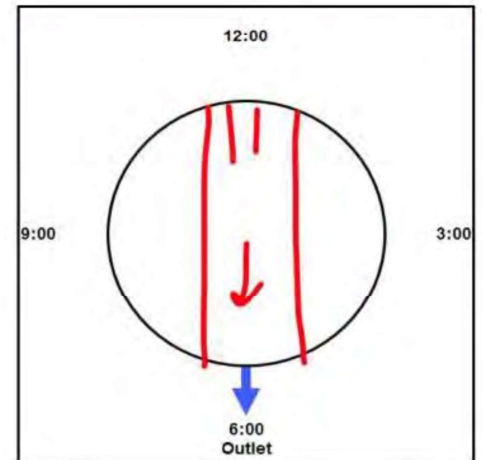
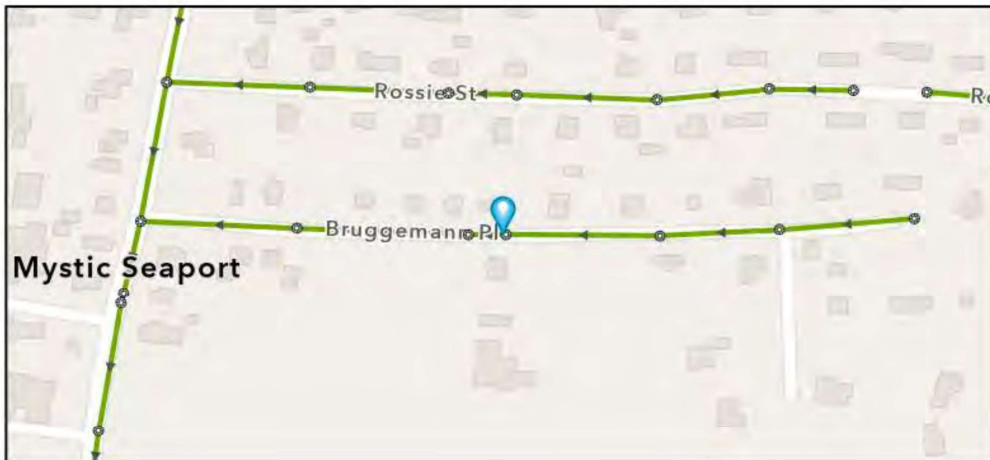
Street: 14 BRUGGEMANN PLACE

GIS MH No: 1-160

Type of Manhole: SANITARY SEWER (GRAVITY)

Inspection Status: SURFACE INSPECTION: LEVEL 1 (NO MANHOLE ENTRY)

Manhole Location and Configuration



Inspection Photos



**Manhole Inspection Form****Manhole Information****Inspector:** BM AND JC**Date:** 5/4/2022**Weather:** LIGHT RAIN**GIS MH No:** 1-160**Type of Manhole:** SANITARY SEWER (GRAVITY)**Inspection Status:** SURFACE INSPECTION: LEVEL 1 (NO MANHOLE ENTRY)**Street:** 14 BRUGGEMANN PLACE**Rim to Invert (ft):** 12.25**Location:** LOCAL RURAL STREETS**Grade to Rim (in):** 0**Manhole Infiltration****Surcharge:** NO**Number of Holes:** 0**Infiltration:** NO**Metal Riser:** NO**Manhole Characteristics**

Location in MH	Mtrl. Code	Infil. Code	Cond. Code	Repair Codes	Comments
Frame/Cover	CAST IRON	STAINS	SOUND	NONE	
Chimney	BRICK	NONE	DEFECTIVE	RESET EXISTING FRAME AND CHIMNEY	BRICKS ARE STARTING TO BE DISPLACED
Cone	CONCRETE (PRECAST)	NONE	SOUND	NONE	
Wall	CONCRETE (PRECAST)	NONE	SOUND	NONE	
Bench	BRICK	NONE	SOUND	NONE	
Invert/Channel	BRICK	NONE	SOUND	NONE	

Invert Information

Pipe	Direction	Rim to Invert	Pipe Dia. (in)	Pipe Mtrl. Code	Clock Position*	Comments
Pipe 1	OUT	12.25	8	POLY VINYL CHLORIDE	06:00	
Pipe 2	IN	9.25	8	POLY VINYL CHLORIDE	12:00	TOP OF DROP
Pipe 3	IN	12.25	8	POLY VINYL CHLORIDE	06:00	BOTTOM OF DROP
Pipe 4						
Pipe 5						

**Additional
Comments**



CDM
Smith

Town of Stonington, Connecticut

Manhole Inspection Form

Manhole Information

Inspector: BM AND JC

Date: 5/4/2022

Weather: LIGHT RAIN

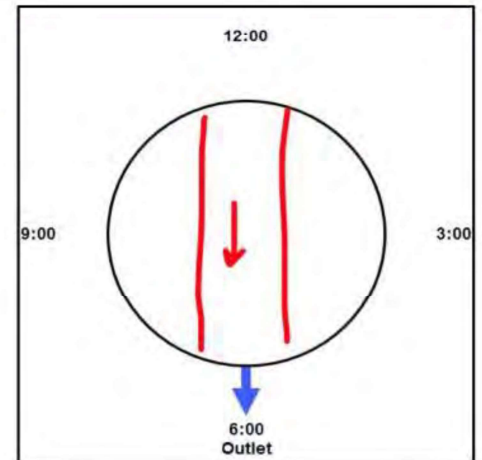
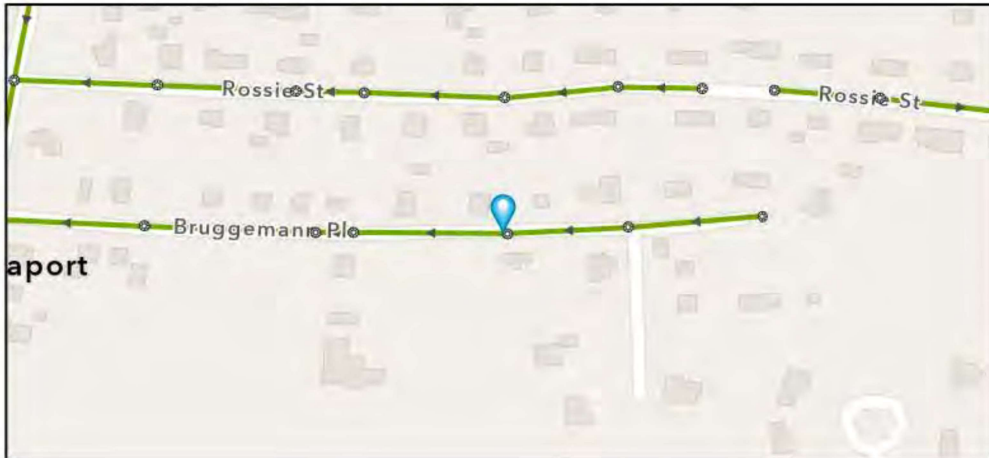
Street: 28 BRUGGEMANN PLACE

GIS MH No: 1-161

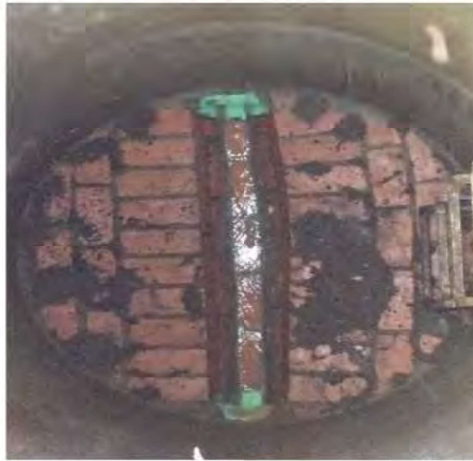
Type of Manhole: SANITARY SEWER (GRAVITY)

Inspection Status: SURFACE INSPECTION: LEVEL 1 (NO MANHOLE ENTRY)

Manhole Location and Configuration



Inspection Photos



**Manhole Inspection Form****Manhole Information****Inspector:** BM AND JC**Date:** 5/4/2022**Weather:** LIGHT RAIN**GIS MH No:** 1-161**Type of Manhole:** SANITARY SEWER (GRAVITY)**Inspection Status:** SURFACE INSPECTION: LEVEL 1 (NO MANHOLE ENTRY)**Street:** 28 BRUGGEMANN PLACE**Rim to Invert (ft):** 9.25**Location:** LOCAL RURAL STREETS**Grade to Rim (in):** 0**Manhole Infiltration****Surcharge:** NO**Number of Holes:** 0**Infiltration:** NO**Metal Riser:** NO**Manhole Characteristics**

Location in MH	Mtrl. Code	Infil. Code	Cond. Code	Repair Codes	Comments
Frame/Cover	CAST IRON	STAINS	SOUND	NONE	
Chimney	OTHER (DESCRIBE IN DETAILS)	NONE	SOUND	NONE	NO CHIMNEY
Cone	CONCRETE (PRECAST)	NONE	SOUND	NONE	
Wall	CONCRETE (PRECAST)	NONE	SOUND	NONE	
Bench	BRICK	NONE	SOUND	NONE	
Invert/Channel	BRICK	NONE	SOUND	NONE	

Invert Information

Pipe	Direction	Rim to Invert	Pipe Dia. (in)	Pipe Mtrl. Code	Clock Position*	Comments
Pipe 1	OUT	9.25	8	POLY VINYL CHLORIDE	06:00	
Pipe 2	IN	9.25	8	POLY VINYL CHLORIDE	12:00	
Pipe 3						
Pipe 4						
Pipe 5						

**Additional
Comments**



CDM
Smith

Town of Stonington, Connecticut

Manhole Inspection Form

Manhole Information

Inspector: BM AND JC

Date: 5/4/2022

Weather: LIGHT RAIN

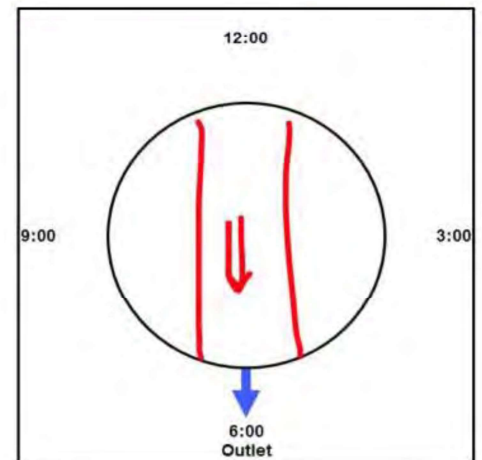
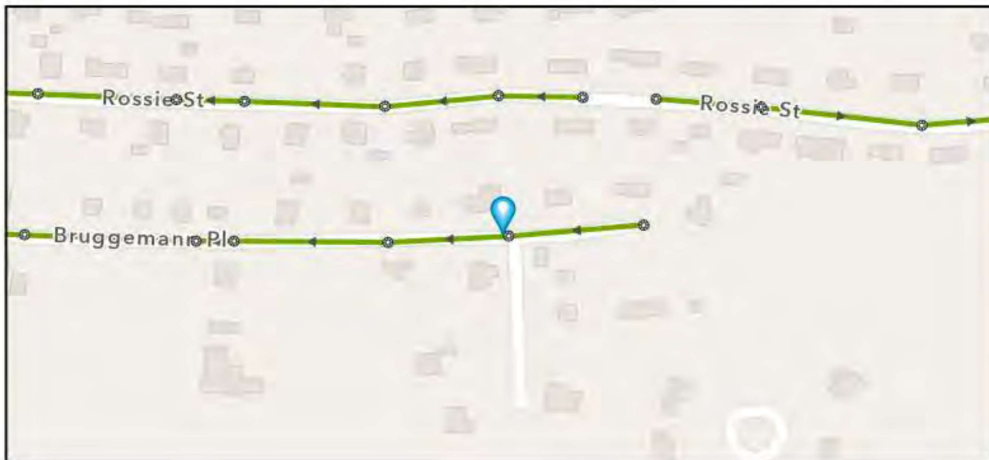
Street: 31 BRUGGEMAN PLACE

GIS MH No: 1-162

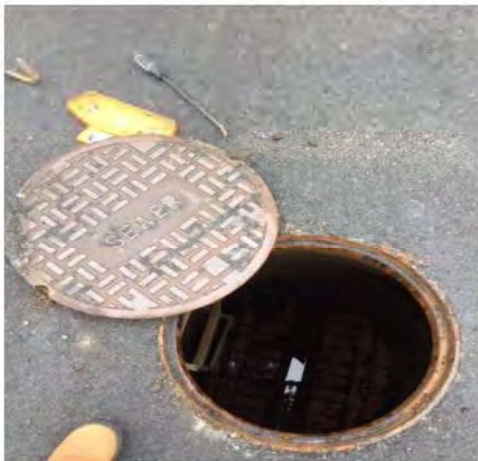
Type of Manhole: SANITARY SEWER (GRAVITY)

Inspection Status: SURFACE INSPECTION: LEVEL 1 (NO MANHOLE ENTRY)

Manhole Location and Configuration



Inspection Photos



**Manhole Inspection Form****Manhole Information****Inspector:** BM AND JC**Date:** 5/4/2022**Weather:** LIGHT RAIN**Street:** 31 BRUGGEMAN PLACE**Location:** LOCAL RURAL STREETS**GIS MH No:** 1-162**Type of Manhole:** SANITARY SEWER (GRAVITY)**Inspection Status:** SURFACE INSPECTION: LEVEL 1 (NO MANHOLE ENTRY)**Rim to Invert (ft):** 8.75**Grade to Rim (in):** 0**Manhole Infiltration****Surcharge:** NO**Infiltration:** NO**Number of Holes:** 0**Metal Riser:** YES**Manhole Characteristics**

Location in MH	Mtrl. Code	Infil. Code	Cond. Code	Repair Codes	Comments
Frame/Cover	CAST IRON	STAINS	SOUND	NONE	
Chimney	BRICK	NONE	SOUND	NONE	
Cone	CONCRETE (PRECAST)	NONE	SOUND	NONE	
Wall	CONCRETE (PRECAST)	NONE	SOUND	NONE	
Bench	BRICK	NONE	SOUND	NONE	
Invert/Channel	BRICK	NONE	SOUND	NONE	

Invert Information

Pipe	Direction	Rim to Invert	Pipe Dia. (in)	Pipe Mtrl. Code	Clock Position*	Comments
Pipe 1	OUT	8.75	8	POLY VINYL CHLORIDE	06:00	
Pipe 2	IN	8.75	8	POLY VINYL CHLORIDE	12:00	
Pipe 3						
Pipe 4						
Pipe 5						

**Additional
Comments**



CDM
Smith

Town of Stonington, Connecticut

Manhole Inspection Form

Manhole Information

Inspector: BM AND JC

Date: 5/4/2022

Weather: LIGHT RAIN

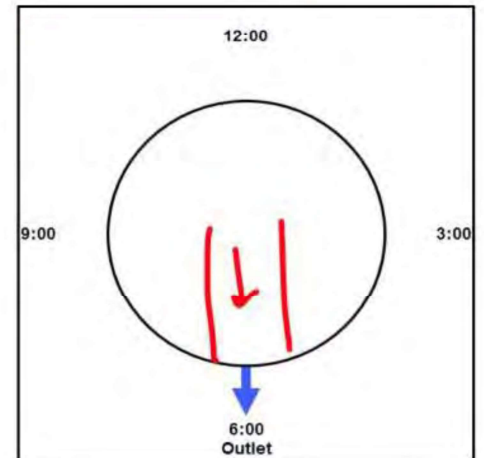
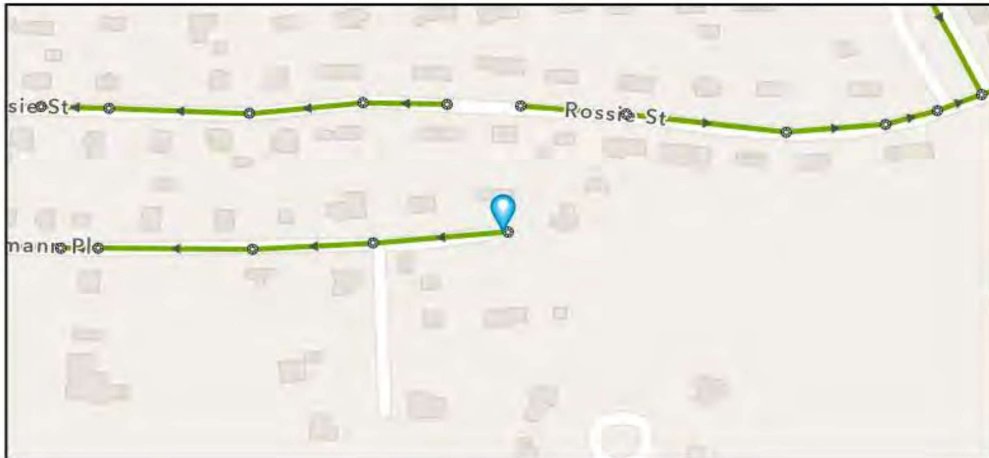
Street: 37 BRUGGEMANN PLACE

GIS MH No: 1-163

Type of Manhole: SANITARY SEWER (GRAVITY)

Inspection Status: SURFACE INSPECTION: LEVEL 1 (NO MANHOLE ENTRY)

Manhole Location and Configuration



Inspection Photos





Town of Stonington, Connecticut

Manhole Inspection Form

Manhole Information

Inspector: BM AND JC

Date: 5/4/2022

Weather: LIGHT RAIN

Street: 37 BRUGGEMANN PLACE

Location: LOCAL RURAL STREETS

GIS MH No: 1-163

Type of Manhole: SANITARY SEWER (GRAVITY)

Inspection Status: SURFACE INSPECTION: LEVEL 1 (NO MANHOLE ENTRY)

Rim to Invert (ft): 8.25

Grade to Rim (in): 0

Manhole Infiltration

Surcharge: NO

Infiltration: NO

Number of Holes: 3

Metal Riser: NO

Manhole Characteristics

Location in MH	Mtrl. Code	Infil. Code	Cond. Code	Repair Codes	Comments
Frame/Cover	CAST IRON	NONE	SOUND	NONE	
Chimney	OTHER (DESCRIBE IN DETAILS)	NONE	SOUND	NONE	NO CHIMNEY.
Cone	CONCRETE (PRECAST)	NONE	SOUND	NONE	
Wall	CONCRETE (PRECAST)	NONE	SOUND	NONE	
Bench	BRICK	NONE	SOUND	NONE	
Invert/Channel	BRICK	NONE	SOUND	NONE	

Invert Information

Pipe	Direction	Rim to Invert	Pipe Dia. (in)	Pipe Mtrl. Code	Clock Position*	Comments
Pipe 1	OUT	8.25	8	POLY VINYL CHLORIDE	06:00	
Pipe 2						
Pipe 3						
Pipe 4						
Pipe 5						

Additional
Comments

*6:00 is outlet



Manhole Inspection Form

Manhole Information

Inspector: BM AND JC

Date: 5/4/2022

Weather: LIGHT RAIN

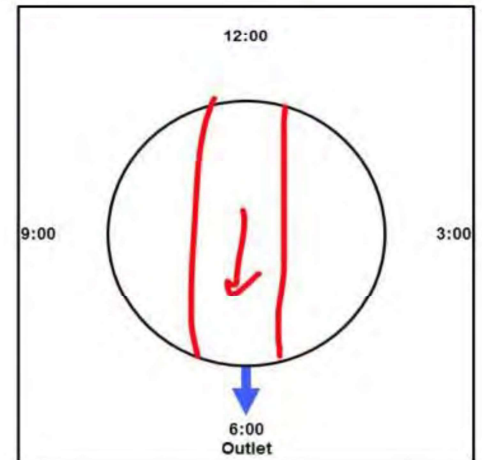
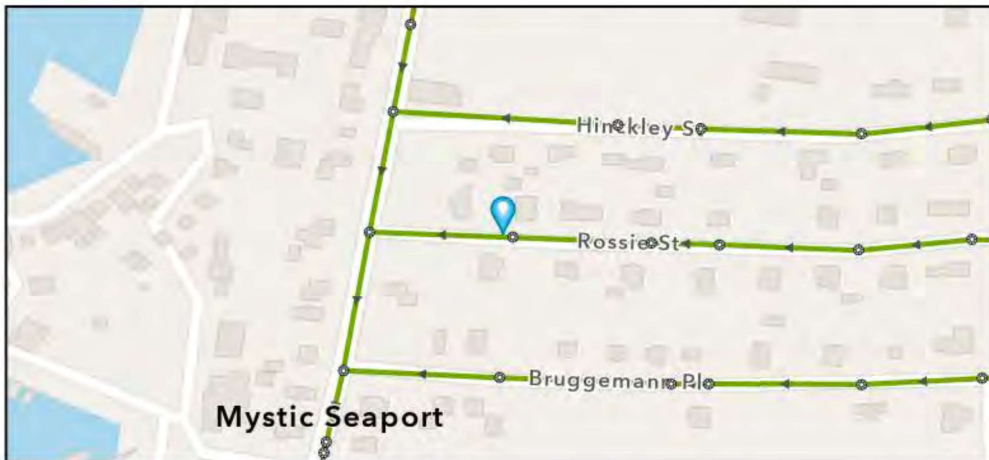
Street: 5 ROSSIE STREET

GIS MH No: 1-164

Type of Manhole: SANITARY SEWER (GRAVITY)

Inspection Status: SURFACE INSPECTION: LEVEL 1 (NO MANHOLE ENTRY)

Manhole Location and Configuration



Inspection Photos



**Manhole Inspection Form****Manhole Information****Inspector:** BM AND JC**Date:** 5/4/2022**Weather:** LIGHT RAIN**GIS MH No:** 1-164**Type of Manhole:** SANITARY SEWER (GRAVITY)**Inspection Status:** SURFACE INSPECTION: LEVEL 1 (NO MANHOLE ENTRY)**Street:** 5 ROSSIE STREET**Location:** LOCAL RURAL STREETS**Rim to Invert (ft):** 9.5**Grade to Rim (in):** 0**Manhole Infiltration****Surcharge:** NO**Number of Holes:** 0**Infiltration:** NO**Metal Riser:** NO**Manhole Characteristics**

Location in MH	Mtrl. Code	Infil. Code	Cond. Code	Repair Codes	Comments
Frame/Cover	CAST IRON	STAINS	SOUND	NONE	
Chimney	BRICK	NONE	SOUND	NONE	
Cone	CONCRETE (PRECAST)	NONE	SOUND	NONE	
Wall	CONCRETE (PRECAST)	NONE	SOUND	NONE	
Bench	BRICK	NONE	SOUND	NONE	
Invert/Channel	BRICK	NONE	SOUND	NONE	

Invert Information

Pipe	Direction	Rim to Invert	Pipe Dia. (in)	Pipe Mtrl. Code	Clock Position*	Comments
Pipe 1	OUT	9.5	8	POLY VINYL CHLORIDE	06:00	
Pipe 2	IN	9.5	8	POLY VINYL CHLORIDE	12:00	
Pipe 3						
Pipe 4						
Pipe 5						

**Additional
Comments**



CDM
Smith

Town of Stonington, Connecticut

Manhole Inspection Form

Manhole Information

Inspector: BM AND JC

Date: 5/3/2022

Weather: DRY (NO PRECIPITATION DURING SURVEY)

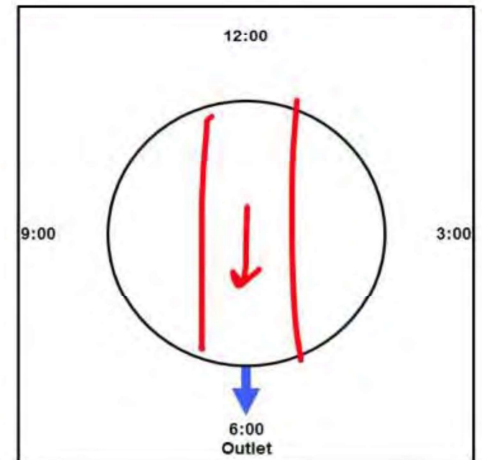
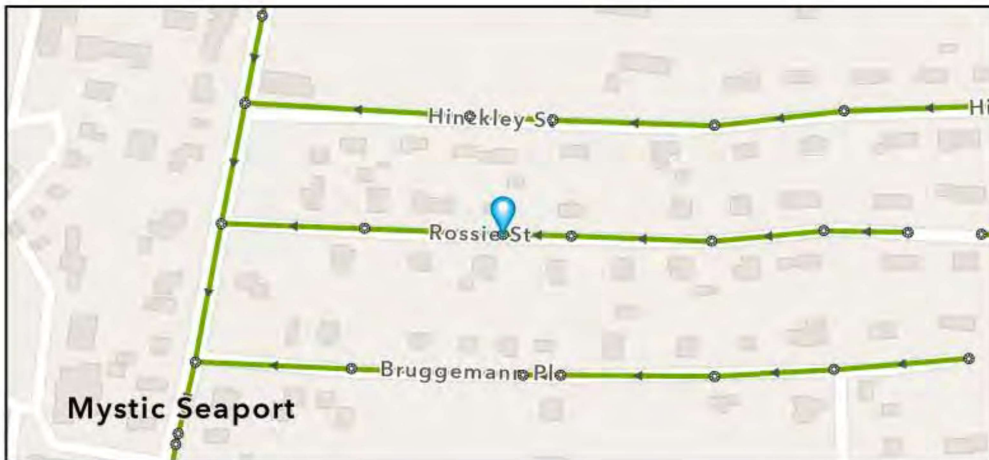
Street: 9 ROSSIE STREET

GIS MH No: 1-165

Type of Manhole: SANITARY SEWER (GRAVITY)

Inspection Status: SURFACE INSPECTION: LEVEL 1 (NO MANHOLE ENTRY)

Manhole Location and Configuration



Inspection Photos



**Manhole Inspection Form****Manhole Information****Inspector:** BM AND JC**Date:** 5/3/2022**Weather:** DRY (NO PRECIPITATION DURING SURVEY)**GIS MH No:** 1-165**Type of Manhole:** SANITARY SEWER (GRAVITY)**Inspection Status:** SURFACE INSPECTION: LEVEL 1 (NO MANHOLE ENTRY)**Street:** 9 ROSSIE STREET**Location:** LOCAL RURAL STREETS**Rim to Invert (ft):** 7.5**Grade to Rim (in):** 0**Manhole Infiltration****Surcharge:** NO**Number of Holes:** 0**Infiltration:** NO**Metal Riser:** YES**Manhole Characteristics**

Location in MH	Mtrl. Code	Infil. Code	Cond. Code	Repair Codes	Comments
Frame/Cover	CAST IRON	NONE	SOUND	NONE	
Chimney	BRICK	NONE	SOUND	NONE	
Cone	CONCRETE (PRECAST)	NONE	SOUND	NONE	
Wall	CONCRETE (PRECAST)	NONE	SOUND	NONE	
Bench	BRICK	NONE	SOUND	NONE	
Invert/Channel	BRICK	NONE	SOUND	NONE	

Invert Information

Pipe	Direction	Rim to Invert	Pipe Dia. (in)	Pipe Mtrl. Code	Clock Position*	Comments
Pipe 1	OUT	7.5	8	POLY VINYL CHLORIDE	06:00	
Pipe 2	IN	7.5	8	POLY VINYL CHLORIDE	12:00	I
Pipe 3						
Pipe 4						
Pipe 5						

**Additional
Comments**



CDM
Smith

Town of Stonington, Connecticut

Manhole Inspection Form

Manhole Information

Inspector: BM AND JC

Date: 5/3/2022

Weather: DRY (NO PRECIPITATION DURING SURVEY)

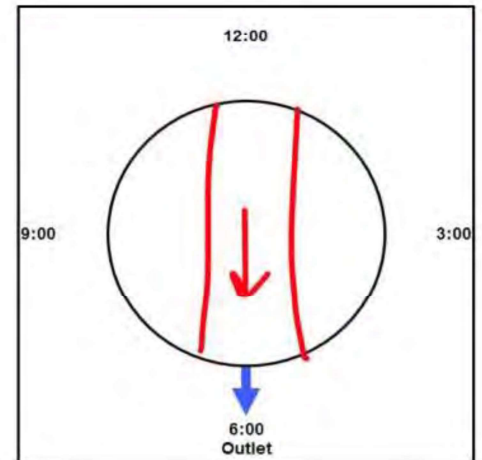
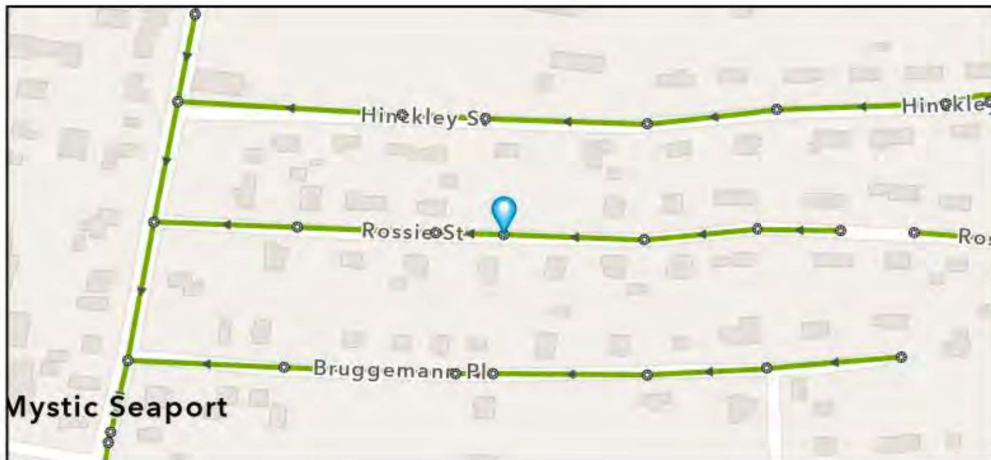
Street: 15 ROSSIE STREET

GIS MH No: 1-166

Type of Manhole: SANITARY SEWER (GRAVITY)

Inspection Status: SURFACE INSPECTION: LEVEL 1 (NO MANHOLE ENTRY)

Manhole Location and Configuration



Inspection Photos





Town of Stonington, Connecticut

Manhole Inspection Form

Manhole Information

Inspector: BM AND JC

Date: 5/3/2022

Weather: DRY (NO PRECIPITATION DURING SURVEY)

Street: 15 ROSSIE STREET

Location: LOCAL RURAL STREETS

GIS MH No: 1-166

Type of Manhole: SANITARY SEWER (GRAVITY)

Inspection Status: SURFACE INSPECTION: LEVEL 1 (NO MANHOLE ENTRY)

Rim to Invert (ft): 9

Grade to Rim (in): 0

Manhole Infiltration

Surcharge: NO

Infiltration: NO

Number of Holes: 0

Metal Riser: YES

Manhole Characteristics

Location in MH	Mtrl. Code	Infil. Code	Cond. Code	Repair Codes	Comments
Frame/Cover	CAST IRON	WEEPER	SOUND	NONE	
Chimney	BRICK	NONE	SOUND	NONE	
Cone	CONCRETE (PRECAST)	NONE	SOUND	NONE	
Wall	CONCRETE (PRECAST)	NONE	SOUND	NONE	
Bench	BRICK	NONE	SOUND	NONE	
Invert/Channel	BRICK	NONE	SOUND	NONE	

Invert Information

Pipe	Direction	Rim to Invert	Pipe Dia. (in)	Pipe Mtrl. Code	Clock Position*	Comments
Pipe 1	OUT	9	8	POLY VINYL CHLORIDE	06:00	
Pipe 2	IN	9	8	BRICK	12:00	
Pipe 3						
Pipe 4						
Pipe 5						

Additional
Comments

*6:00 is outlet



CDM
Smith

Town of Stonington, Connecticut

Manhole Inspection Form

Manhole Information

Inspector: BM AND JC

Date: 5/3/2022

Weather: DRY (NO PRECIPITATION DURING SURVEY)

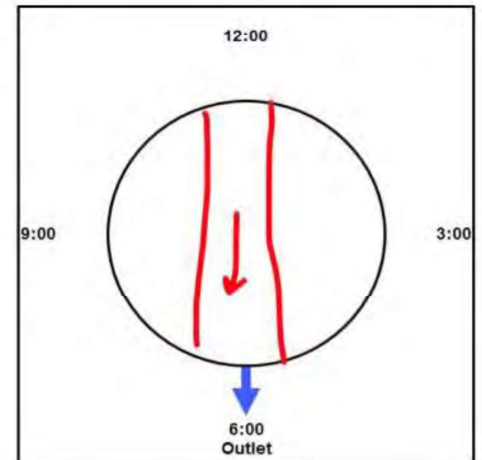
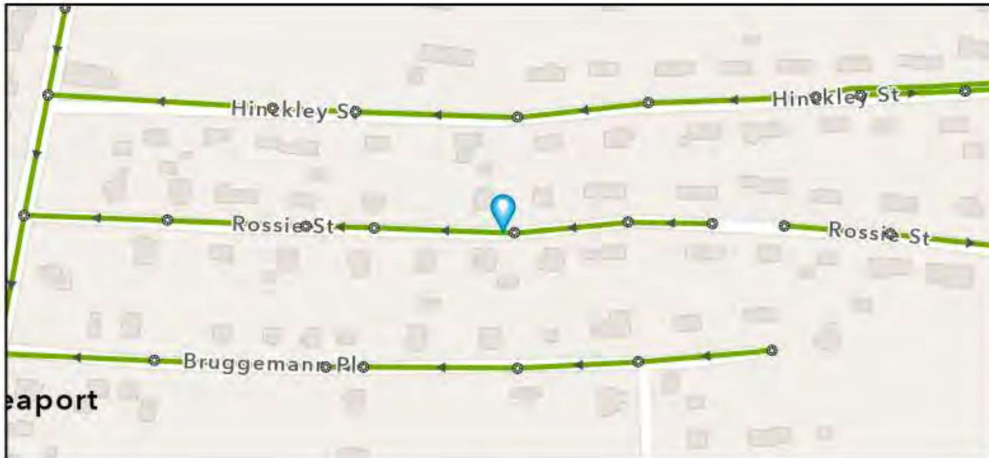
Street: 21 ROSSIE STREET

GIS MH No: 1-167

Type of Manhole: SANITARY SEWER (GRAVITY)

Inspection Status: SURFACE INSPECTION: LEVEL 1 (NO MANHOLE ENTRY)

Manhole Location and Configuration



Inspection Photos



**Manhole Inspection Form****Manhole Information****Inspector:** BM AND JC**Date:** 5/3/2022**Weather:** DRY (NO PRECIPITATION DURING SURVEY)**GIS MH No:** 1-167**Type of Manhole:** SANITARY SEWER (GRAVITY)**Inspection Status:** SURFACE INSPECTION: LEVEL 1 (NO MANHOLE ENTRY)**Street:** 21 ROSSIE STREET**Location:** LOCAL RURAL STREETS**Rim to Invert (ft):** 9**Grade to Rim (in):** 0**Manhole Infiltration****Surcharge:** NO**Infiltration:** NO**Number of Holes:** 0**Metal Riser:** YES**Manhole Characteristics**

Location in MH	Mtrl. Code	Infil. Code	Cond. Code	Repair Codes	Comments
Frame/Cover	CAST IRON	STAINS	SOUND	NONE	
Chimney	BRICK	NONE	SOUND	NONE	
Cone	CONCRETE (PRECAST)	NONE	SOUND	NONE	
Wall	CONCRETE (PRECAST)	NONE	SOUND	NONE	
Bench	BRICK	NONE	SOUND	NONE	
Invert/Channel	BRICK	NONE	SOUND	NONE	

Invert Information

Pipe	Direction	Rim to Invert	Pipe Dia. (in)	Pipe Mtrl. Code	Clock Position*	Comments
Pipe 1	OUT	9	8	POLY VINYL CHLORIDE	06:00	
Pipe 2	IN	9	8	POLY VINYL CHLORIDE	12:00	
Pipe 3						
Pipe 4						
Pipe 5						

**Additional
Comments**



CDM
Smith

Town of Stonington, Connecticut

Manhole Inspection Form

Manhole Information

Inspector: BM AND JC

Date: 5/3/2022

Weather: DRY (NO PRECIPITATION DURING SURVEY)

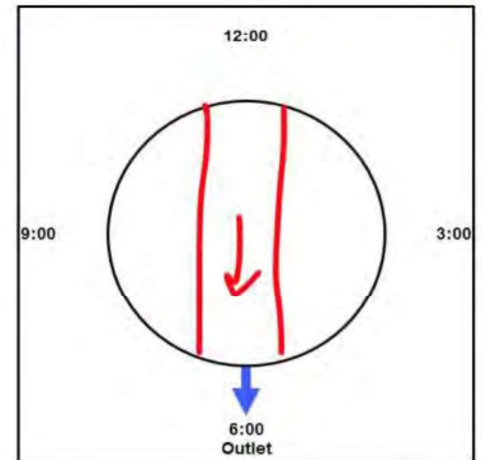
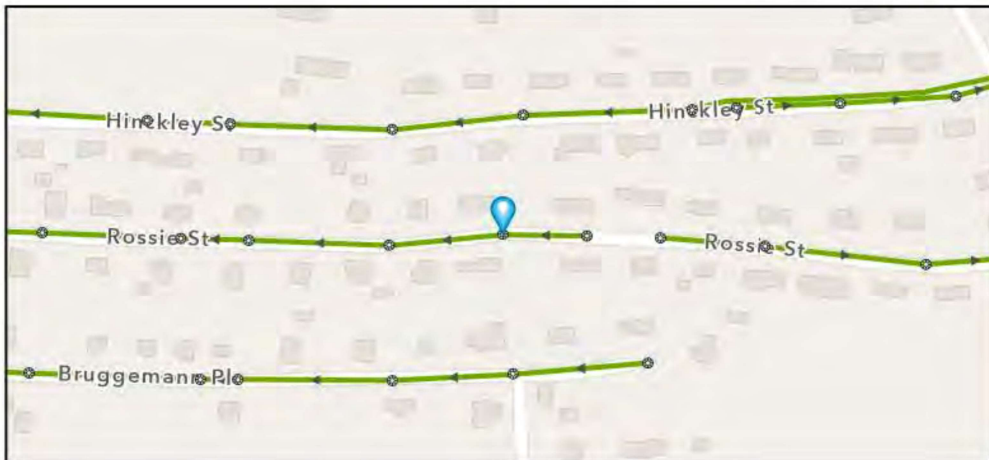
Street: 25 ROSSIE STREET

GIS MH No: 1-168

Type of Manhole: SANITARY SEWER (GRAVITY)

Inspection Status: SURFACE INSPECTION: LEVEL 1 (NO MANHOLE ENTRY)

Manhole Location and Configuration



Inspection Photos



**Manhole Inspection Form****Manhole Information****Inspector:** BM AND JC**Date:** 5/3/2022**Weather:** DRY (NO PRECIPITATION DURING SURVEY)**GIS MH No:** 1-168**Type of Manhole:** SANITARY SEWER (GRAVITY)**Inspection Status:** SURFACE INSPECTION: LEVEL 1 (NO MANHOLE ENTRY)**Street:** 25 ROSSIE STREET**Location:** LOCAL RURAL STREETS**Rim to Invert (ft):** 9**Grade to Rim (in):** 0**Manhole Infiltration****Surcharge:** NO**Number of Holes:** 0**Infiltration:** NO**Metal Riser:** NO**Manhole Characteristics**

Location in MH	Mtrl. Code	Infil. Code	Cond. Code	Repair Codes	Comments
Frame/Cover	CAST IRON	STAINS	SOUND	NONE	
Chimney	BRICK	NONE	SOUND	NONE	
Cone	CONCRETE (PRECAST)	NONE	SOUND	NONE	
Wall	CONCRETE (PRECAST)	NONE	SOUND	NONE	
Bench	BRICK	NONE	SOUND	NONE	
Invert/Channel	BRICK	NONE	SOUND	NONE	

Invert Information

Pipe	Direction	Rim to Invert	Pipe Dia. (in)	Pipe Mtrl. Code	Clock Position*	Comments
Pipe 1	OUT	9	8	POLYMER CONCRETE PIPE	06:00	
Pipe 2	IN	9	8	POLY VINYL CHLORIDE	12:00	
Pipe 3						
Pipe 4						
Pipe 5						

**Additional
Comments**



Manhole Inspection Form

Manhole Information

Inspector: BM AND JC

Date: 5/3/2022

Weather: DRY (NO PRECIPITATION DURING SURVEY)

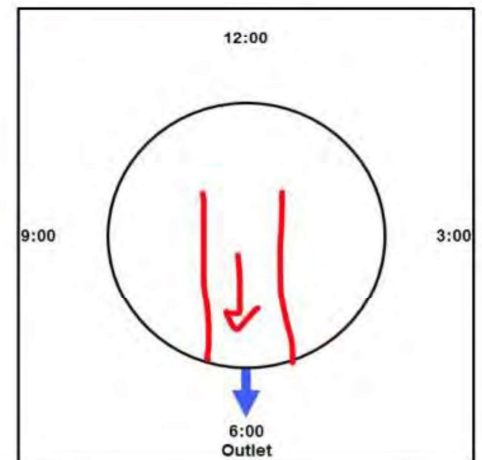
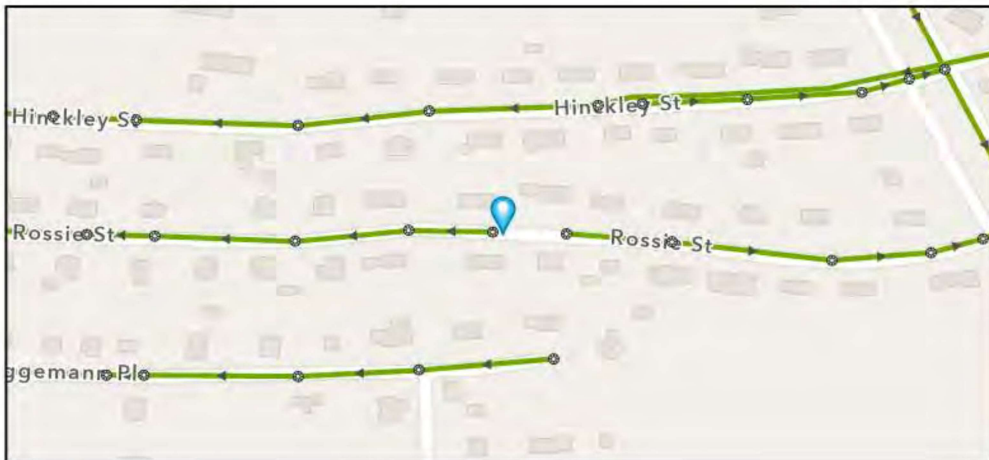
Street: 26 ROSSIE STREET

GIS MH No: 1-169

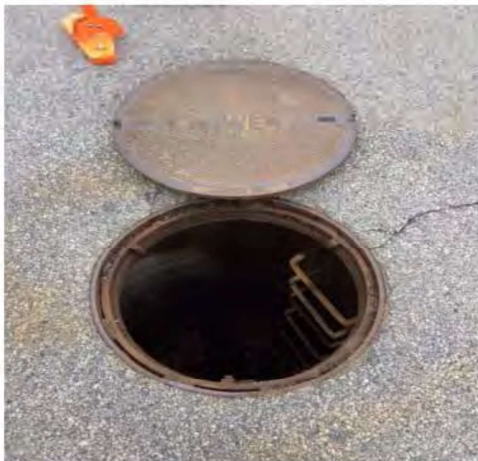
Type of Manhole: SANITARY SEWER (GRAVITY)

Inspection Status: SURFACE INSPECTION: LEVEL 1 (NO MANHOLE ENTRY)

Manhole Location and Configuration



Inspection Photos





Town of Stonington, Connecticut

Manhole Inspection Form

Manhole Information

Inspector: BM AND JC

Date: 5/3/2022

Weather: DRY (NO PRECIPITATION DURING SURVEY)

Street: 26 ROSSIE STREET

Location: LOCAL RURAL STREETS

GIS MH No: 1-169

Type of Manhole: SANITARY SEWER (GRAVITY)

Inspection Status: SURFACE INSPECTION: LEVEL 1 (NO MANHOLE ENTRY)

Rim to Invert (ft): 8.25

Grade to Rim (in): 0

Manhole Infiltration

Surcharge: NO

Infiltration: NO

Number of Holes: 0

Metal Riser: YES

Manhole Characteristics

Location in MH	Mtrl. Code	Infil. Code	Cond. Code	Repair Codes	Comments
Frame/Cover	CAST IRON	STAINS	SOUND	NONE	
Chimney	BRICK	NONE	SOUND	NONE	
Cone	CONCRETE (PRECAST)	NONE	SOUND	NONE	
Wall	CONCRETE (PRECAST)	NONE	SOUND	NONE	
Bench	BRICK	NONE	SOUND	NONE	
Invert/Channel	BRICK	NONE	SOUND	NONE	

Invert Information

Pipe	Direction	Rim to Invert	Pipe Dia. (in)	Pipe Mtrl. Code	Clock Position*	Comments
Pipe 1	OUT	8.25	8	POLY VINYL CHLORIDE	06:00	
Pipe 2						
Pipe 3						
Pipe 4						
Pipe 5						

Additional
Comments

*6:00 is outlet



Manhole Inspection Form

Manhole Information

Inspector: BM AND JC

Date: 5/4/2022

Weather: DRY (NO PRECIPITATION DURING SURVEY)

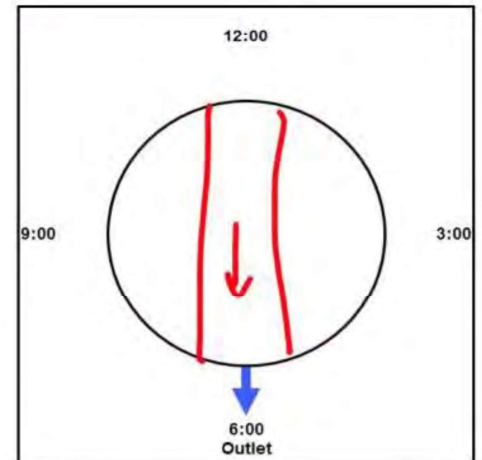
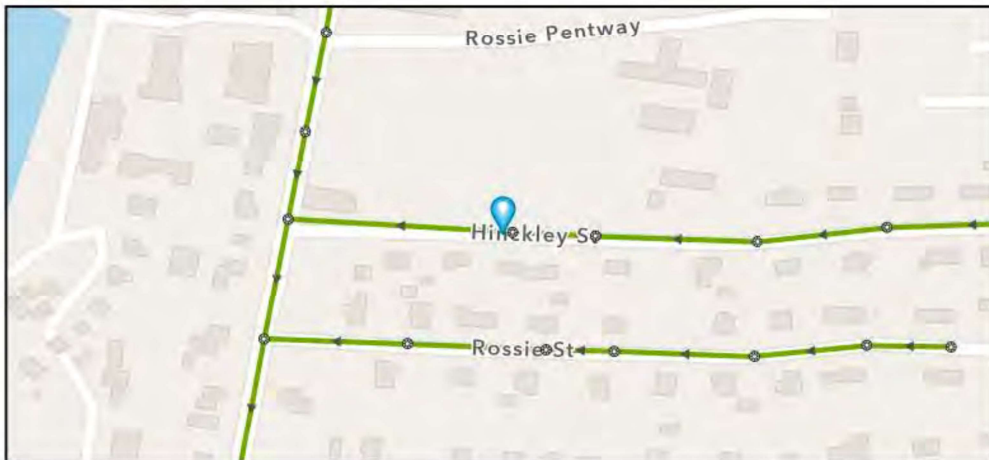
Street: 10 HINCKLEY STREET

GIS MH No: 1-170

Type of Manhole: SANITARY SEWER (GRAVITY)

Inspection Status: SURFACE INSPECTION: LEVEL 1 (NO MANHOLE ENTRY)

Manhole Location and Configuration



Inspection Photos



**Manhole Inspection Form****Manhole Information****Inspector:** BM AND JC**Date:** 5/4/2022**Weather:** DRY (NO PRECIPITATION DURING SURVEY)**GIS MH No:** 1-170**Type of Manhole:** SANITARY SEWER (GRAVITY)**Inspection Status:** SURFACE INSPECTION: LEVEL 1 (NO MANHOLE ENTRY)**Street:** 10 HINCKLEY STREET**Location:** LOCAL RURAL STREETS**Rim to Invert (ft):** 7**Grade to Rim (in):** 0**Manhole Infiltration****Surcharge:** NO**Number of Holes:** 0**Infiltration:** NO**Metal Riser:** NO**Manhole Characteristics**

Location in MH	Mtrl. Code	Infil. Code	Cond. Code	Repair Codes	Comments
Frame/Cover	CAST IRON	WEEPER	SOUND	NONE	
Chimney	BRICK	NONE	SOUND	NONE	
Cone	CONCRETE (PRECAST)	NONE	SOUND	NONE	
Wall	CONCRETE (PRECAST)	NONE	SOUND	NONE	
Bench	BRICK	NONE	SOUND	NONE	SLIGHT DEGRADATION FROM 3-6 O CLOCK, BUT NOT DEFECTIVE
Invert/Channel	BRICK	NONE	SOUND	NONE	

Invert Information

Pipe	Direction	Rim to Invert	Pipe Dia. (in)	Pipe Mtrl. Code	Clock Position*	Comments
Pipe 1	OUT	7	8	POLY VINYL CHLORIDE	06:00	
Pipe 2	IN	7	8	POLY VINYL CHLORIDE	12:00	
Pipe 3						
Pipe 4						
Pipe 5						

**Additional
Comments**



Manhole Inspection Form

Manhole Information

Inspector: BM AND JC

Date: 5/4/2022

Weather: DRY (NO PRECIPITATION DURING SURVEY)

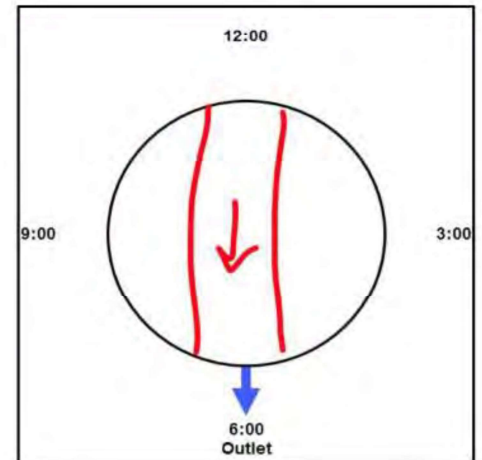
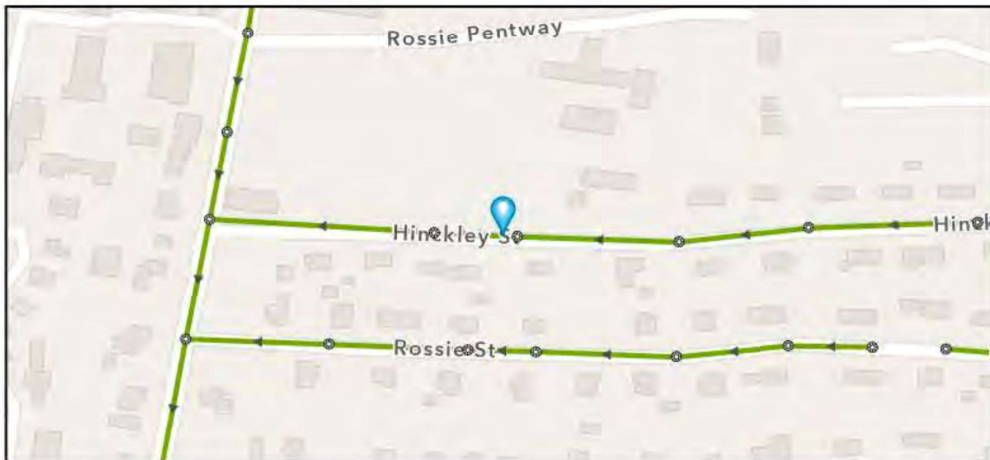
Street: HINCKLEY ST

GIS MH No: 1-171

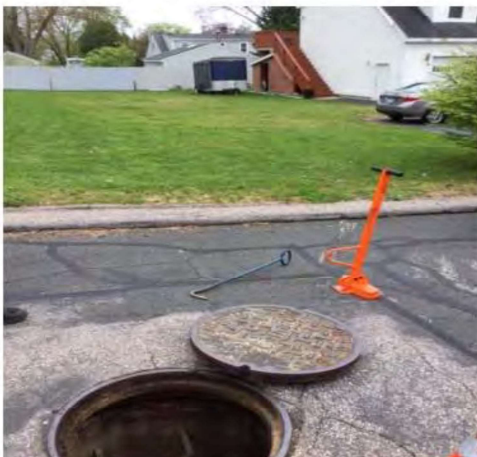
Type of Manhole: SANITARY SEWER (GRAVITY)

Inspection Status: SURFACE INSPECTION: LEVEL 1 (NO MANHOLE ENTRY)

Manhole Location and Configuration



Inspection Photos



**Manhole Inspection Form****Manhole Information****Inspector:** BM AND JC**Date:** 5/4/2022**Weather:** DRY (NO PRECIPITATION DURING SURVEY)**GIS MH No:** 1-171**Type of Manhole:** SANITARY SEWER (GRAVITY)**Inspection Status:** SURFACE INSPECTION: LEVEL 1 (NO MANHOLE ENTRY)**Street:** HINCKLEY ST**Rim to Invert (ft):** 9.5**Location:** LOCAL RURAL STREETS**Grade to Rim (in):** 0**Manhole Infiltration****Surcharge:** NO**Number of Holes:** 0**Infiltration:** NO**Metal Riser:** NO**Manhole Characteristics**

Location in MH	Mtrl. Code	Infil. Code	Cond. Code	Repair Codes	Comments
Frame/Cover	CAST IRON	WEEPER	SOUND	NONE	
Chimney	BRICK	NONE	SOUND	NONE	
Cone	CONCRETE (PRECAST)	NONE	SOUND	NONE	
Wall	CONCRETE (PRECAST)	NONE	SOUND	NONE	
Bench	BRICK	NONE	SOUND	NONE	
Invert/Channel	BRICK	NONE	SOUND	NONE	

Invert Information

Pipe	Direction	Rim to Invert	Pipe Dia. (in)	Pipe Mtrl. Code	Clock Position*	Comments
Pipe 1	OUT	9.5	8	POLY VINYL CHLORIDE	06:00	
Pipe 2	IN	9.5	8	POLY VINYL CHLORIDE	12:00	
Pipe 3						
Pipe 4						
Pipe 5						

**Additional
Comments**



CDM
Smith

Town of Stonington, Connecticut

Manhole Inspection Form

Manhole Information

Inspector: BM AND JC

Date: 5/4/2022

Weather: DRY (NO PRECIPITATION DURING SURVEY)

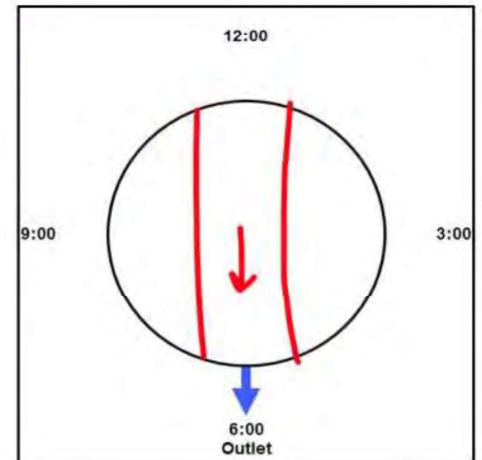
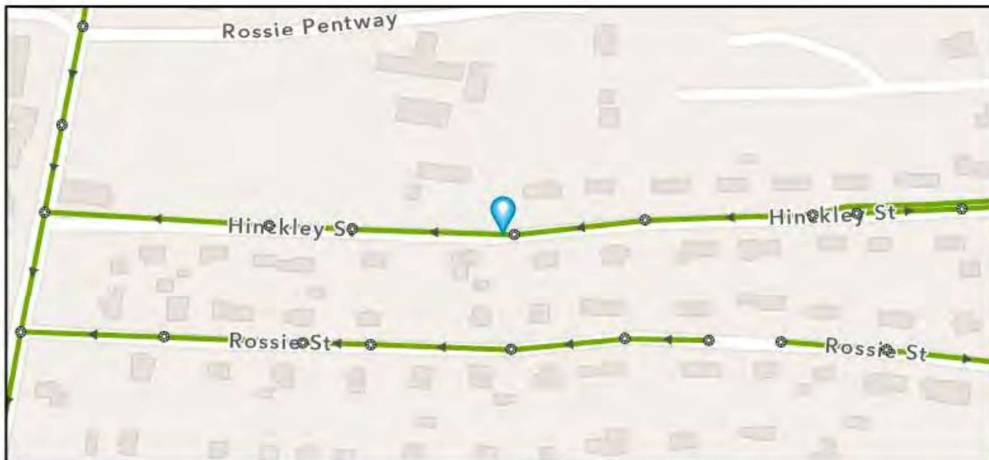
Street: 20 HINCKLEY ST

GIS MH No: 1-172

Type of Manhole: SANITARY SEWER (GRAVITY)

Inspection Status: SURFACE INSPECTION: LEVEL 1 (NO MANHOLE ENTRY)

Manhole Location and Configuration



Inspection Photos



**Manhole Inspection Form****Manhole Information****Inspector:** BM AND JC**Date:** 5/4/2022**Weather:** DRY (NO PRECIPITATION DURING SURVEY)**GIS MH No:** 1-172**Type of Manhole:** SANITARY SEWER (GRAVITY)**Inspection Status:** SURFACE INSPECTION: LEVEL 1 (NO MANHOLE ENTRY)**Street:** 20 HINCKLEY ST**Location:** LOCAL RURAL STREETS**Rim to Invert (ft):** 8.25**Grade to Rim (in):** 0**Manhole Infiltration****Surcharge:** NO**Number of Holes:** 0**Infiltration:** NO**Metal Riser:** NO**Manhole Characteristics**

Location in MH	Mtrl. Code	Infil. Code	Cond. Code	Repair Codes	Comments
Frame/Cover	CAST IRON	STAINS	SOUND	NONE	
Chimney	BRICK	NONE	SOUND	NONE	
Cone	CONCRETE (PRECAST)	NONE	SOUND	NONE	
Wall	CONCRETE (PRECAST)	NONE	SOUND	NONE	
Bench	BRICK	NONE	SOUND	NONE	
Invert/Channel	BRICK	NONE	SOUND	NONE	

Invert Information

Pipe	Direction	Rim to Invert	Pipe Dia. (in)	Pipe Mtrl. Code	Clock Position*	Comments
Pipe 1	OUT	8.25	8	POLY VINYL CHLORIDE	06:00	
Pipe 2	IN	8.25	8	POLY VINYL CHLORIDE	12:00	
Pipe 3						
Pipe 4						
Pipe 5						

**Additional
Comments**



CDM
Smith

Town of Stonington, Connecticut

Manhole Inspection Form

Manhole Information

Inspector: BM/JC

Date: 5/18/2022

Weather: DRY (NO PRECIPITATION DURING SURVEY)

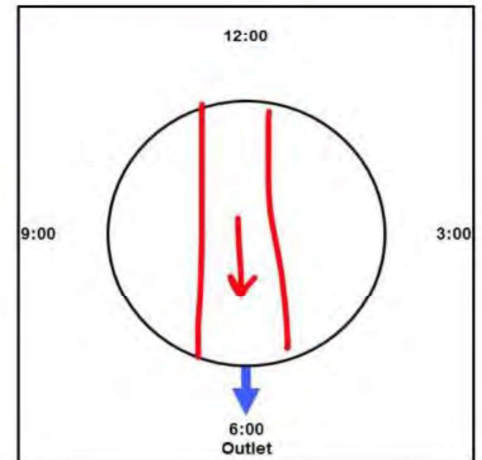
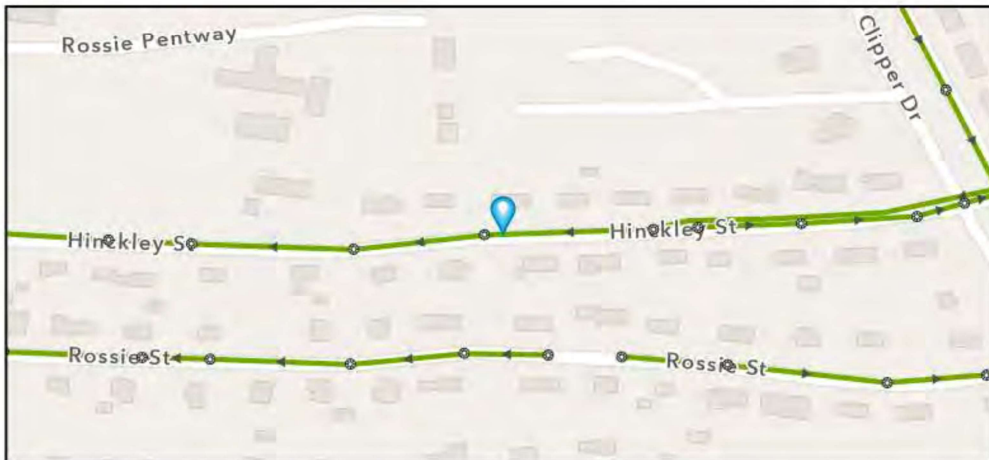
Street: 26 HINCKLEY STREET

GIS MH No: 1-173

Type of Manhole: SANITARY SEWER (GRAVITY)

Inspection Status: SURFACE INSPECTION: LEVEL 1 (NO MANHOLE ENTRY)

Manhole Location and Configuration



Inspection Photos





Town of Stonington, Connecticut

Manhole Inspection Form

Manhole Information

Inspector: BM/JC GIS MH No: 1-173
Date: 5/18/2022 Type of Manhole: SANITARY SEWER (GRAVITY)
Weather: DRY (NO PRECIPITATION DURING SURVEY) Inspection Status: SURFACE INSPECTION: LEVEL 1 (NO MANHOLE ENTRY)
Street: 26 HINCKLEY STREET Rim to Invert (ft): 9
Location: LOCAL RURAL STREETS Grade to Rim (in): 0

Manhole Infiltration

Surcharge: NO Number of Holes: 0
Infiltration: NO Metal Riser: NO

Manhole Characteristics

Location in MH	Mtrl. Code	Infil. Code	Cond. Code	Repair Codes	Comments
Frame/Cover	CAST IRON	NONE	SOUND	NONE	
Chimney	BRICK	NONE	SOUND	NONE	
Cone	CONCRETE (PRECAST)	NONE	SOUND	NONE	
Wall	CONCRETE (PRECAST)	NONE	SOUND	NONE	
Bench	BRICK	NONE	SOUND	NONE	
Invert/Channel	BRICK	NONE	SOUND	NONE	

Invert Information

Pipe	Direction	Rim to Invert	Pipe Dia. (in)	Pipe Mtrl. Code	Clock Position*	Comments
Pipe 1	OUT	9	8	POLY VINYL CHLORIDE	06:00	
Pipe 2	IN	9	8	POLY VINYL CHLORIDE	12:00	
Pipe 3						
Pipe 4						
Pipe 5						

Additional
Comments

*6:00 is outlet



CDM
Smith

Town of Stonington, Connecticut

Manhole Inspection Form

Manhole Information

Inspector: BM AND JC

Date: 5/4/2022

Weather: DRY (NO PRECIPITATION DURING SURVEY)

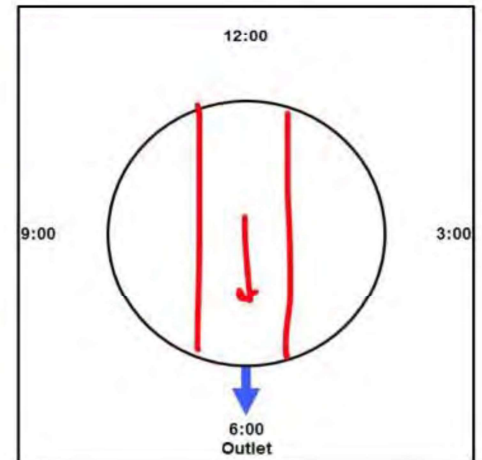
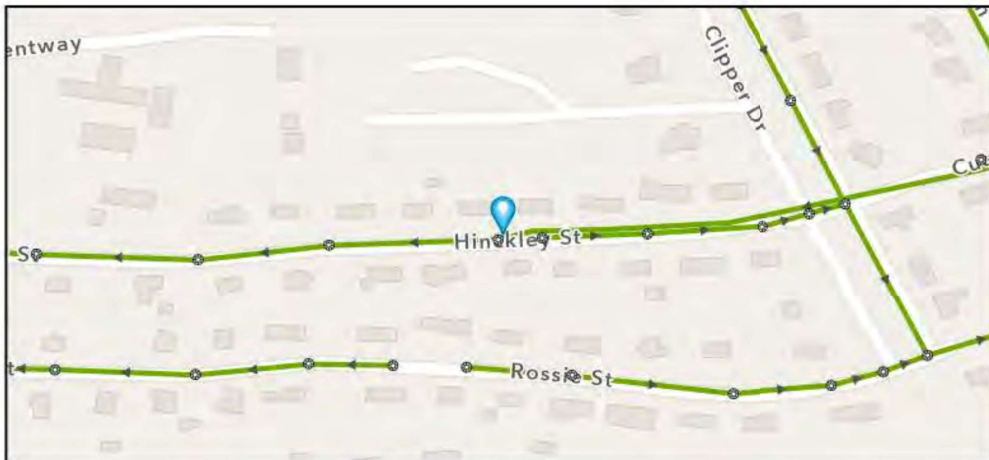
Street: 30 HINCKLEY STREET

GIS MH No: 1-174

Type of Manhole: SANITARY SEWER (GRAVITY)

Inspection Status: SURFACE INSPECTION: LEVEL 1 (NO MANHOLE ENTRY)

Manhole Location and Configuration



Inspection Photos



**Manhole Inspection Form****Manhole Information****Inspector:** BM AND JC**Date:** 5/4/2022**Weather:** DRY (NO PRECIPITATION DURING SURVEY)**GIS MH No:** 1-174**Type of Manhole:** SANITARY SEWER (GRAVITY)**Inspection Status:** SURFACE INSPECTION: LEVEL 1 (NO MANHOLE ENTRY)**Street:** 30 HINCKLEY STREET**Location:** LOCAL RURAL STREETS**Rim to Invert (ft):** 6**Grade to Rim (in):** 0**Manhole Infiltration****Surcharge:** NO**Infiltration:** NO**Number of Holes:** 4**Metal Riser:** YES**Manhole Characteristics**

Location in MH	Mtrl. Code	Infil. Code	Cond. Code	Repair Codes	Comments
Frame/Cover	CAST IRON	WEEPER	SOUND	NONE	
Chimney	OTHER (DESCRIBE IN DETAILS)	NONE	SOUND	NONE	
Cone	CONCRETE (PRECAST)	NONE	SOUND	NONE	
Wall	CONCRETE (PRECAST)	NONE	SOUND	NONE	
Bench	BRICK	NONE	SOUND	NONE	
Invert/Channel	BRICK	NONE	SOUND	NONE	

Invert Information

Pipe	Direction	Rim to Invert	Pipe Dia. (in)	Pipe Mtrl. Code	Clock Position*	Comments
Pipe 1	OUT	6	8	POLY VINYL CHLORIDE	06:00	
Pipe 2	IN	6	4	VITRIFIED CLAY PIPE	12:00	
Pipe 3						
Pipe 4						
Pipe 5						

**Additional
Comments**



CDM
Smith

Town of Stonington, Connecticut

Manhole Inspection Form

Manhole Information

Inspector: BM AND JC

Date: 5/3/2022

Weather: DRY (NO PRECIPITATION DURING SURVEY)

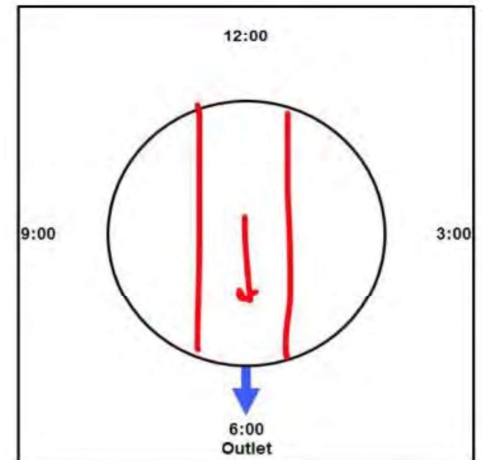
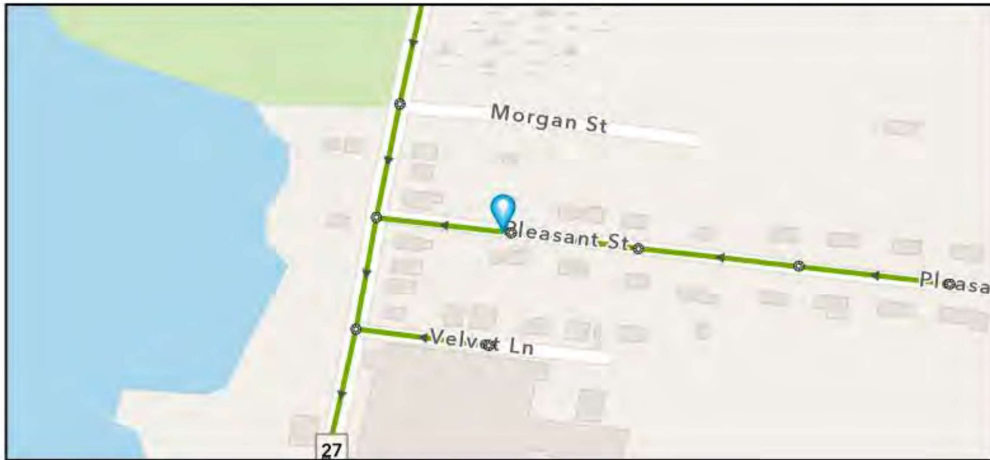
Street: 4 PLEASANT ST

GIS MH No: 1-175

Type of Manhole: SANITARY SEWER (GRAVITY)

Inspection Status: SURFACE INSPECTION: LEVEL 1 (NO MANHOLE ENTRY)

Manhole Location and Configuration



Inspection Photos



**Manhole Inspection Form****Manhole Information****Inspector:** BM AND JC**Date:** 5/3/2022**Weather:** DRY (NO PRECIPITATION DURING SURVEY)**GIS MH No:** 1-175**Type of Manhole:** SANITARY SEWER (GRAVITY)**Inspection Status:** SURFACE INSPECTION: LEVEL 1 (NO MANHOLE ENTRY)**Street:** 4 PLEASANT ST**Location:** LOCAL RURAL STREETS**Rim to Invert (ft):** 8**Grade to Rim (in):** 0**Manhole Infiltration****Surcharge:** NO**Number of Holes:** 0**Infiltration:** NO**Metal Riser:** YES**Manhole Characteristics**

Location in MH	Mtrl. Code	Infil. Code	Cond. Code	Repair Codes	Comments
Frame/Cover	CAST IRON	STAINS	SOUND	NONE	
Chimney	BRICK	NONE	SOUND	NONE	
Cone	CONCRETE (PRECAST)	NONE	SOUND	NONE	
Wall	CONCRETE (PRECAST)	NONE	SOUND	NONE	
Bench	BRICK	NONE	SOUND	NONE	
Invert/Channel	BRICK	NONE	SOUND	NONE	

Invert Information

Pipe	Direction	Rim to Invert	Pipe Dia. (in)	Pipe Mtrl. Code	Clock Position*	Comments
Pipe 1	OUT	8	8	POLY VINYL CHLORIDE	06:00	
Pipe 2	IN	7	8	POLY VINYL CHLORIDE	12:00	
Pipe 3						
Pipe 4						
Pipe 5						

**Additional
Comments**



Manhole Inspection Form

Manhole Information

Inspector: BM AND JC

Date: 5/3/2022

Weather: DRY (NO PRECIPITATION DURING SURVEY)

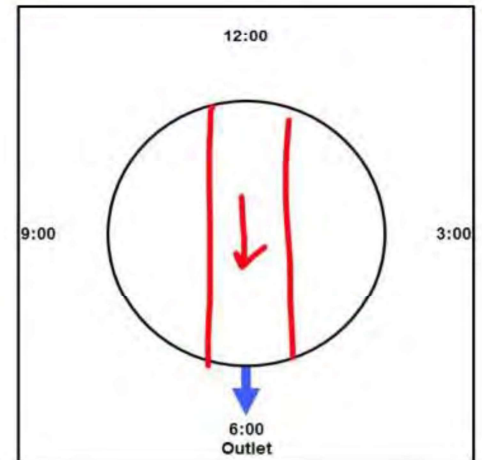
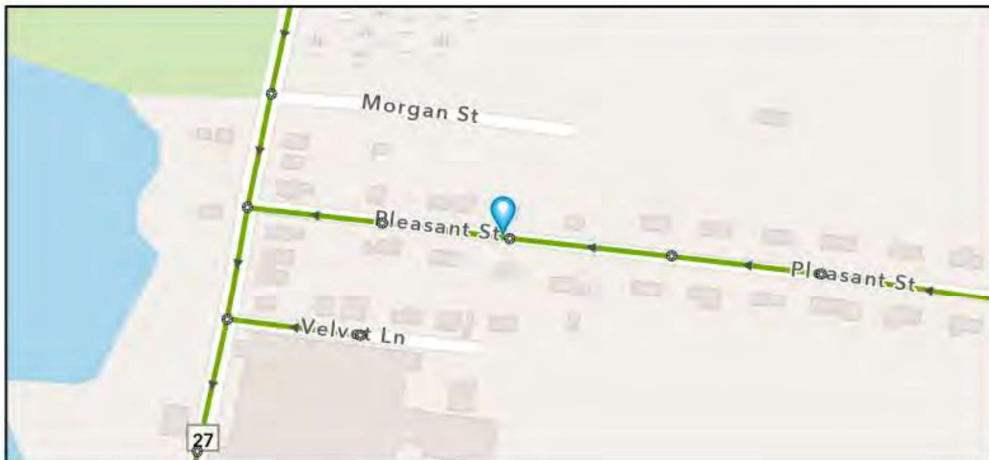
Street: 7 PLEASANT STREET

GIS MH No: 1-176

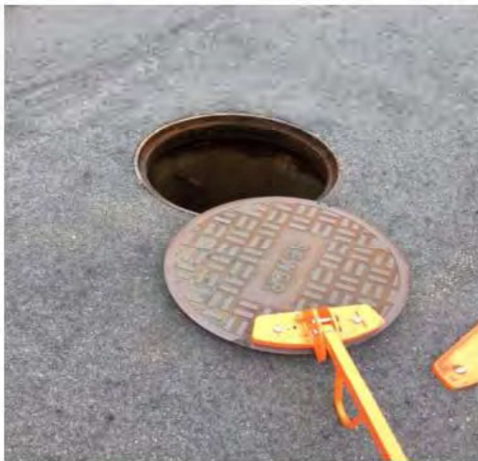
Type of Manhole: SANITARY SEWER (GRAVITY)

Inspection Status: SURFACE INSPECTION: LEVEL 1 (NO MANHOLE ENTRY)

Manhole Location and Configuration



Inspection Photos





Town of Stonington, Connecticut

Manhole Inspection Form

Manhole Information

Inspector: BM AND JC

Date: 5/3/2022

Weather: DRY (NO PRECIPITATION DURING SURVEY)

Street: 7 PLEASANT STREET

Location: LOCAL RURAL STREETS

GIS MH No: 1-176

Type of Manhole: SANITARY SEWER (GRAVITY)

Inspection Status: SURFACE INSPECTION: LEVEL 1 (NO MANHOLE ENTRY)

Rim to Invert (ft): 9.25

Grade to Rim (in): 0

Manhole Infiltration

Surcharge: NO

Infiltration: YES

Number of Holes: 0

Metal Riser: YES

Manhole Characteristics

Location in MH	Mtrl. Code	Infil. Code	Cond. Code	Repair Codes	Comments
Frame/Cover	CAST IRON	STAINS	SOUND	NONE	
Chimney	BRICK	WEEPER	DEFECTIVE	LINE MANHOLE	
Cone	CONCRETE (PRECAST)	NONE	SOUND	NONE	
Wall	CONCRETE (PRECAST)	NONE	SOUND	NONE	
Bench	BRICK	NONE	SOUND	NONE	
Invert/Channel	BRICK	NONE	SOUND	NONE	

Invert Information

Pipe	Direction	Rim to Invert	Pipe Dia. (in)	Pipe Mtrl. Code	Clock Position*	Comments
Pipe 1	OUT	9.25	8	POLY VINYL CHLORIDE	06:00	
Pipe 2	IN	9.25	8	POLY VINYL CHLORIDE	12:00	
Pipe 3						
Pipe 4						
Pipe 5						

Additional
Comments

*6:00 is outlet



CDM
Smith

Town of Stonington, Connecticut

Manhole Inspection Form

Manhole Information

Inspector: BM AND JC

Date: 5/3/2022

Weather: DRY (NO PRECIPITATION DURING SURVEY)

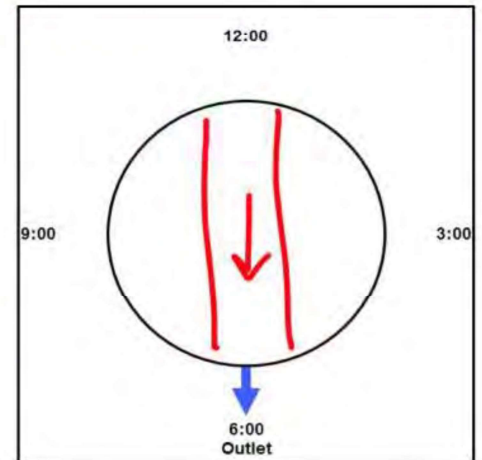
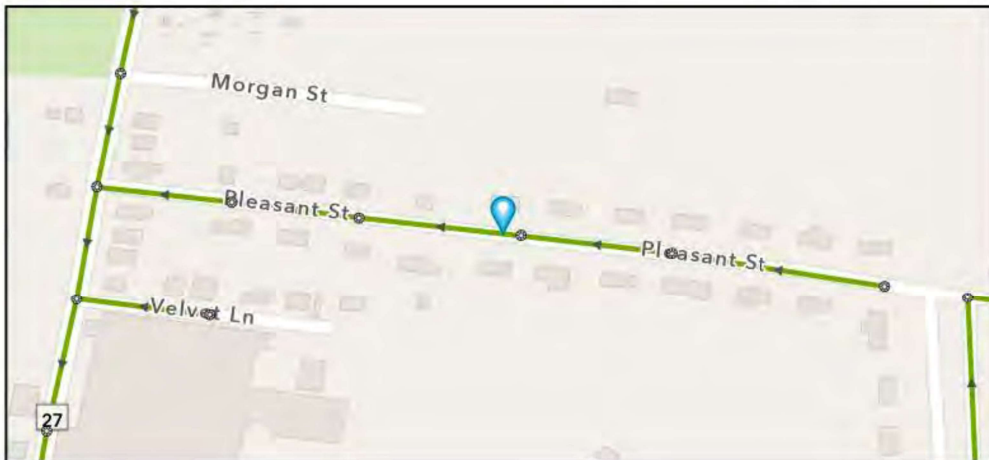
Street: 12 PLEASANT ST

GIS MH No: 1-177

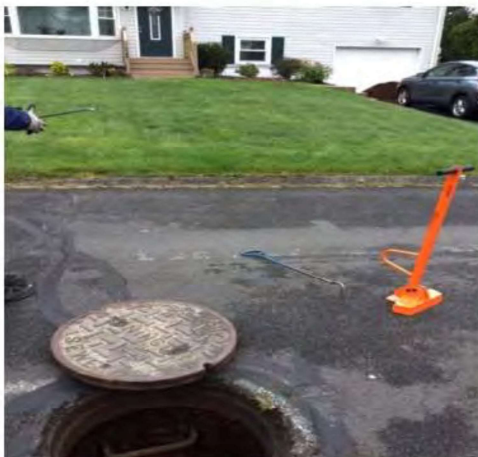
Type of Manhole: SANITARY SEWER (GRAVITY)

Inspection Status: SURFACE INSPECTION: LEVEL 1 (NO MANHOLE ENTRY)

Manhole Location and Configuration



Inspection Photos



**Manhole Inspection Form****Manhole Information****Inspector:** BM AND JC**Date:** 5/3/2022**Weather:** DRY (NO PRECIPITATION DURING SURVEY)**GIS MH No:** 1-177**Type of Manhole:** SANITARY SEWER (GRAVITY)**Inspection Status:** SURFACE INSPECTION: LEVEL 1 (NO MANHOLE ENTRY)**Street:** 12 PLEASANT ST**Location:** LOCAL RURAL STREETS**Rim to Invert (ft):** 9.25**Grade to Rim (in):** -0.05**Manhole Infiltration****Surcharge:** NO**Number of Holes:** 0**Infiltration:** NO**Metal Riser:** YES**Manhole Characteristics**

Location in MH	Mtrl. Code	Infil. Code	Cond. Code	Repair Codes	Comments
Frame/Cover	CAST IRON	WEEPER	SOUND	ADD RISER RING TO FRAME AND CHIMNEY	
Chimney	BRICK	NONE	SOUND	NONE	
Cone	CONCRETE (CAST IN PLACE)	NONE	SOUND	NONE	
Wall	CONCRETE (PRECAST)	NONE	SOUND	NONE	
Bench	BRICK	NONE	SOUND	NONE	
Invert/Channel	BRICK	NONE	SOUND	NONE	

Invert Information

Pipe	Direction	Rim to Invert	Pipe Dia. (in)	Pipe Mtrl. Code	Clock Position*	Comments
Pipe 1	OUT	9.25	8	POLY VINYL CHLORIDE	06:00	
Pipe 2	IN	9.25	8	POLY VINYL CHLORIDE	12:00	
Pipe 3						
Pipe 4						
Pipe 5						

**Additional
Comments**



CDM
Smith

Town of Stonington, Connecticut

Manhole Inspection Form

Manhole Information

Inspector: BM AND JC

Date: 5/3/2022

Weather: DRY (NO PRECIPITATION DURING SURVEY)

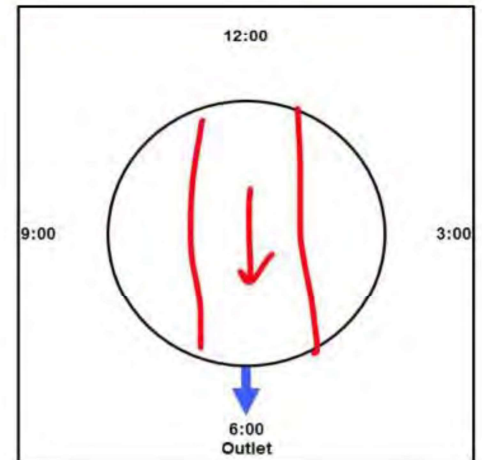
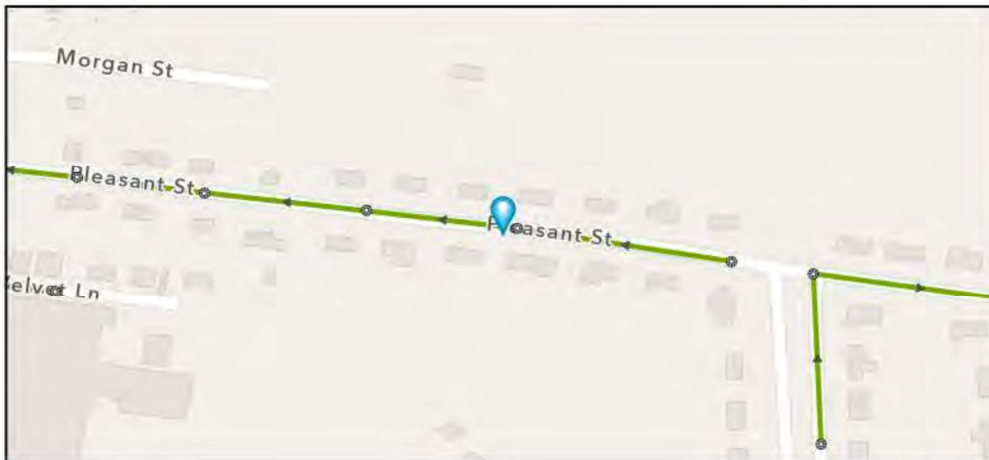
Street: 17 PLEASANT STREET

GIS MH No: 1-178

Type of Manhole: SANITARY SEWER (GRAVITY)

Inspection Status: SURFACE INSPECTION: LEVEL 1 (NO MANHOLE ENTRY)

Manhole Location and Configuration



Inspection Photos





Town of Stonington, Connecticut

Manhole Inspection Form

Manhole Information

Inspector: BM AND JC

Date: 5/3/2022

Weather: DRY (NO PRECIPITATION DURING SURVEY)

Street: 17 PLEASANT STREET

Location: LOCAL RURAL STREETS

GIS MH No: 1-178

Type of Manhole: SANITARY SEWER (GRAVITY)

Inspection Status: SURFACE INSPECTION: LEVEL 1 (NO MANHOLE ENTRY)

Rim to Invert (ft): 8

Grade to Rim (in): 0

Manhole Infiltration

Surcharge: NO

Infiltration: NO

Number of Holes: 0

Metal Riser: YES

Manhole Characteristics

Location in MH	Mtrl. Code	Infil. Code	Cond. Code	Repair Codes	Comments
Frame/Cover	CAST IRON	STAINS	SOUND	NONE	
Chimney	BRICK	NONE	SOUND	NONE	
Cone	CONCRETE (PRECAST)	NONE	SOUND	NONE	
Wall	CONCRETE (PRECAST)	NONE	SOUND	NONE	
Bench	BRICK	NONE	SOUND	CLEAN	PIECE OF OLD COVER ON BENCH
Invert/Channel	BRICK	NONE	SOUND	NONE	

Invert Information

Pipe	Direction	Rim to Invert	Pipe Dia. (in)	Pipe Mtrl. Code	Clock Position*	Comments
Pipe 1	OUT	8	8	POLY VINYL CHLORIDE	06:00	
Pipe 2	IN	8	8	POLY VINYL CHLORIDE	12:00	
Pipe 3						
Pipe 4						
Pipe 5						

Additional
Comments

*6:00 is outlet



**CDM
Smith**

Town of Stonington, Connecticut

Manhole Inspection Form

Manhole Information

Inspector: BM AND JC

Date: 5/3/2022

Weather: DRY (NO PRECIPITATION DURING SURVEY)

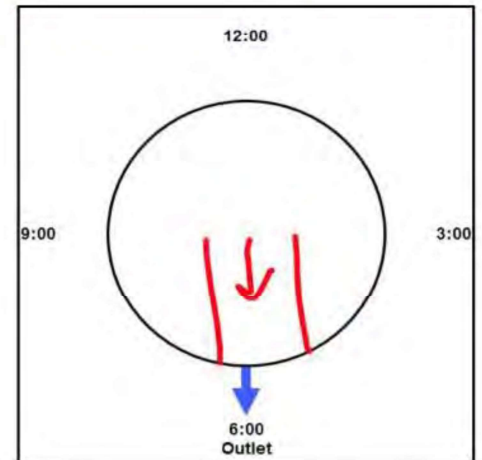
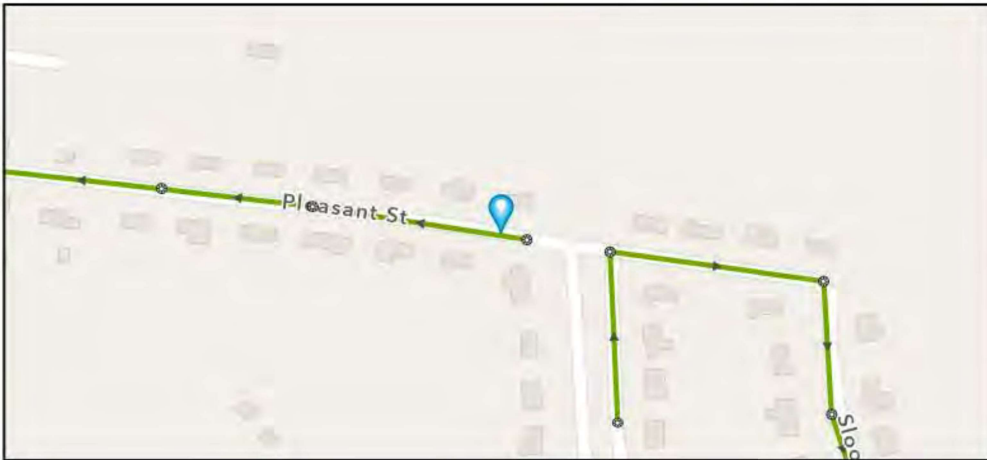
Street: 23 PLEASANT STREET

GIS MH No: 1-179

Type of Manhole: SANITARY SEWER (GRAVITY)

Inspection Status: SURFACE INSPECTION: LEVEL 1 (NO MANHOLE ENTRY)

Manhole Location and Configuration



Inspection Photos



**Manhole Inspection Form****Manhole Information****Inspector:** BM AND JC**Date:** 5/3/2022**Weather:** DRY (NO PRECIPITATION DURING SURVEY)**GIS MH No:** 1-179**Type of Manhole:** SANITARY SEWER (GRAVITY)**Inspection Status:** SURFACE INSPECTION: LEVEL 1 (NO MANHOLE ENTRY)**Street:** 23 PLEASANT STREET**Rim to Invert (ft):** 7.5**Location:** LOCAL RURAL STREETS**Grade to Rim (in):** 0**Manhole Infiltration****Surcharge:** NO**Number of Holes:** 1**Infiltration:** YES**Metal Riser:** YES**Manhole Characteristics**

Location in MH	Mtrl. Code	Infil. Code	Cond. Code	Repair Codes	Comments
Frame/Cover	CAST IRON	STAINS	SOUND	NONE	
Chimney	BRICK	NONE	DEFECTIVE	RESET EXISTING FRAME AND CHIMNEY	
Cone	CONCRETE (PRECAST)	NONE	SOUND	NONE	
Wall	CONCRETE (PRECAST)	RUNNER	DEFECTIVE	LINE_MANHOLE	
Bench	BRICK	NONE	SOUND	NONE	
Invert/Channel	BRICK	NONE	SOUND	NONE	

Invert Information

Pipe	Direction	Rim to Invert	Pipe Dia. (in)	Pipe Mtrl. Code	Clock Position*	Comments
Pipe 1	OUT	7.5	8	POLY VINYL CHLORIDE	06:00	
Pipe 2						
Pipe 3						
Pipe 4						
Pipe 5						

**Additional
Comments**



CDM
Smith

Town of Stonington, Connecticut

Manhole Inspection Form

Manhole Information

Inspector: BM AND JC

Date: 5/3/2022

Weather: DRY (NO PRECIPITATION DURING SURVEY)

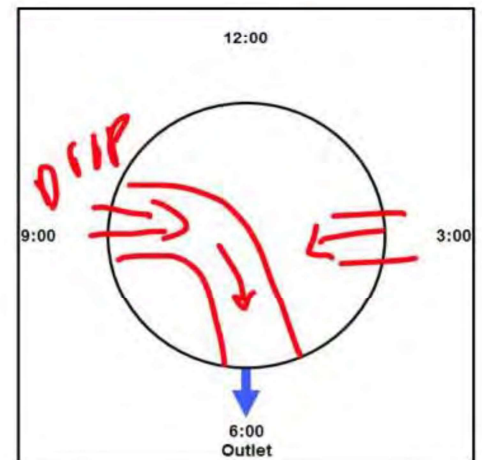
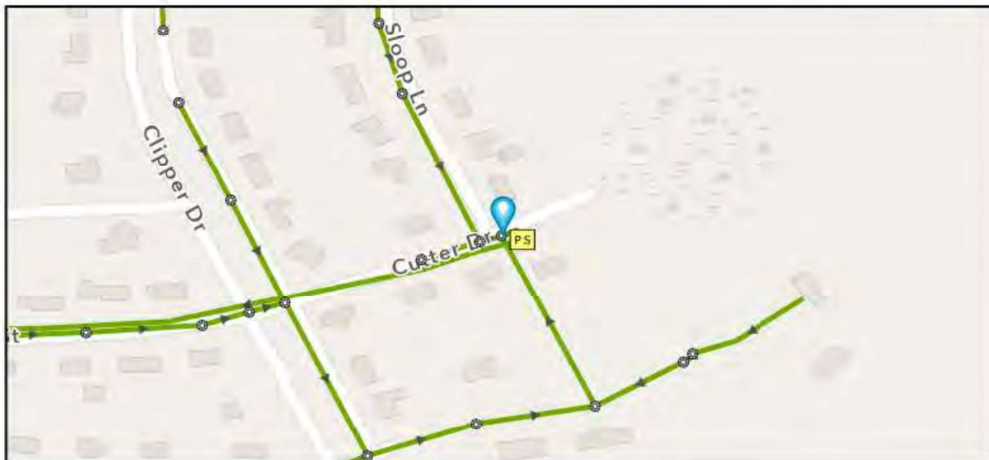
Street: 14 CUTTER DRIVE

GIS MH No: 1-180

Type of Manhole: SANITARY SEWER (GRAVITY)

Inspection Status: SURFACE INSPECTION: LEVEL 1 (NO MANHOLE ENTRY)

Manhole Location and Configuration



Inspection Photos



**Manhole Inspection Form****Manhole Information****Inspector:** BM AND JC**Date:** 5/3/2022**Weather:** DRY (NO PRECIPITATION DURING SURVEY)**GIS MH No:** 1-180**Type of Manhole:** SANITARY SEWER (GRAVITY)**Inspection Status:** SURFACE INSPECTION: LEVEL 1 (NO MANHOLE ENTRY)**Street:** 14 CUTTER DRIVE**Location:** LOCAL RURAL STREETS**Rim to Invert (ft):** 11.25**Grade to Rim (in):** 0**Manhole Infiltration****Surcharge:** NO**Number of Holes:** 0**Infiltration:** NO**Metal Riser:** NO**Manhole Characteristics**

Location in MH	Mtrl. Code	Infil. Code	Cond. Code	Repair Codes	Comments
Frame/Cover	CAST IRON	NONE	SOUND	NONE	
Chimney	BRICK	NONE	SOUND	NONE	
Cone	CONCRETE (PRECAST)	STAINS	SOUND	NONE	
Wall	CONCRETE (PRECAST)	NONE	SOUND	NONE	
Bench	BRICK	NONE	SOUND	CLEAN	
Invert/Channel	BRICK	NONE	SOUND	NONE	

Invert Information

Pipe	Direction	Rim to Invert	Pipe Dia. (in)	Pipe Mtrl. Code	Clock Position*	Comments
Pipe 1	OUT	11.25	8	POLY VINYL CHLORIDE	06:00	
Pipe 2	IN	9	8	POLY VINYL CHLORIDE	09:00	TOP OF DROP
Pipe 3	IN	11.25	8	POLY VINYL CHLORIDE	09:00	BOTTOM OF DROP
Pipe 4	IN	7.75	6	POLY VINYL CHLORIDE	03:00	LATERAL
Pipe 5						

Additional Comments DROP, 9 FT
LATERAL, 7.75



CDM
Smith

Town of Stonington, Connecticut

Manhole Inspection Form

Manhole Information

Inspector: BM AND JC

Date: 5/3/2022

Weather: DRY (NO PRECIPITATION DURING SURVEY)

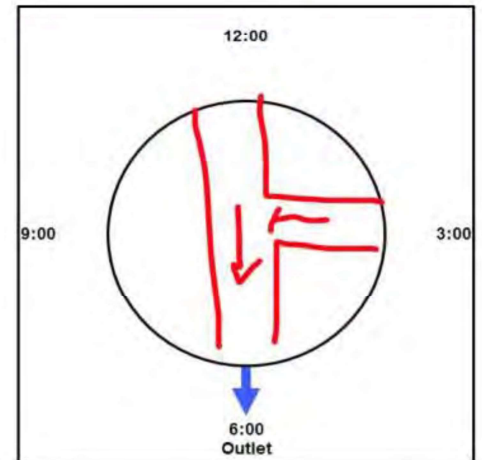
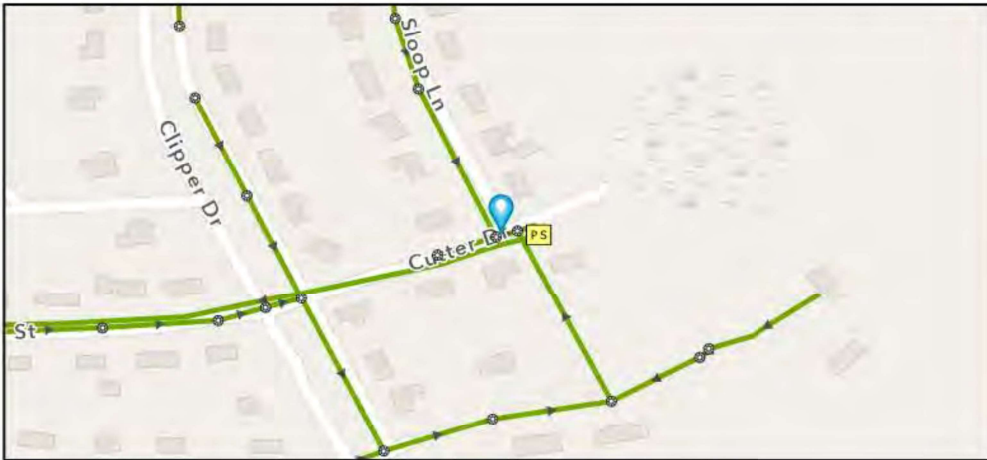
Street: 14 CUTTER DRIVE

GIS MH No: 1-181

Type of Manhole: SANITARY SEWER (GRAVITY)

Inspection Status: SURFACE INSPECTION: LEVEL 1 (NO MANHOLE ENTRY)

Manhole Location and Configuration



Inspection Photos



**Manhole Inspection Form****Manhole Information****Inspector:** BM AND JC**Date:** 5/3/2022**Weather:** DRY (NO PRECIPITATION DURING SURVEY)**GIS MH No:** 1-181**Type of Manhole:** SANITARY SEWER (GRAVITY)**Inspection Status:** SURFACE INSPECTION; LEVEL 1 (NO MANHOLE ENTRY)**Street:** 14 CUTTER DRIVE**Location:** LOCAL RURAL STREETS**Rim to Invert (ft):** 8.5**Grade to Rim (in):** 0**Manhole Infiltration****Surcharge:** NO**Number of Holes:** 0**Infiltration:** NO**Metal Riser:** NO**Manhole Characteristics**

Location in MH	Mtrl. Code	Infil. Code	Cond. Code	Repair Codes	Comments
Frame/Cover	CAST IRON	STAINS	SOUND	NONE	
Chimney	BRICK	NONE	SOUND	NONE	
Cone	CONCRETE (PRECAST)	NONE	SOUND	NONE	
Wall	CONCRETE (PRECAST)	NONE	SOUND	NONE	
Bench	BRICK	NONE	SOUND	NONE	
Invert/Channel	BRICK	NONE	SOUND	NONE	

Invert Information

Pipe	Direction	Rim to Invert	Pipe Dia. (in)	Pipe Mtrl. Code	Clock Position*	Comments
Pipe 1	OUT	8.5	8	POLY VINYL CHLORIDE	06:00	
Pipe 2	IN	8.5	8	POLY VINYL CHLORIDE	12:00	
Pipe 3	IN	8.5	8	POLY VINYL CHLORIDE	03:00	
Pipe 4						
Pipe 5						

**Additional
Comments**



CDM
Smith

Town of Stonington, Connecticut

Manhole Inspection Form

Manhole Information

Inspector: BM AND JC

Date: 5/3/2022

Weather: DRY (NO PRECIPITATION DURING SURVEY)

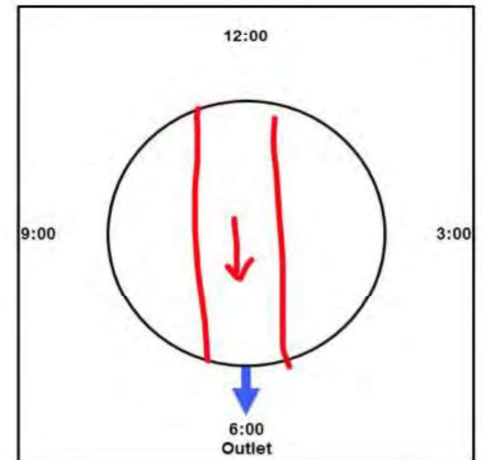
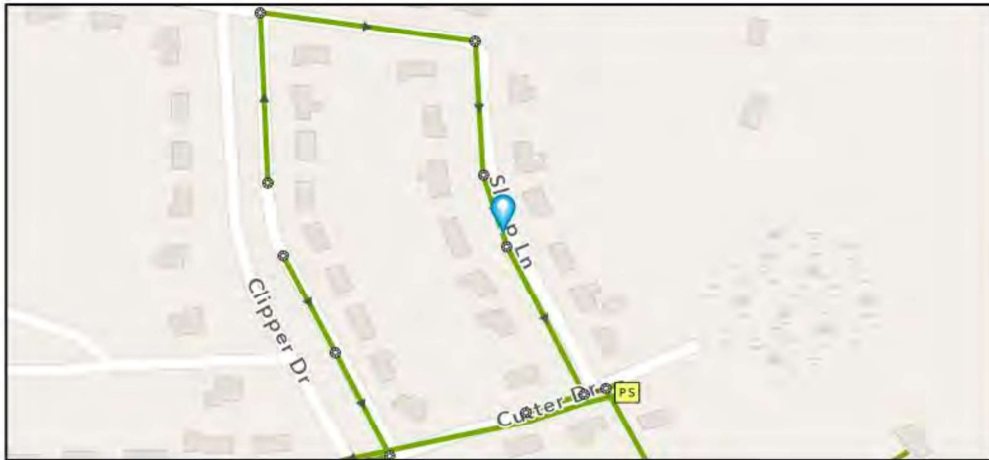
Street: 11 SLOOP LANE

GIS MH No: 1-182

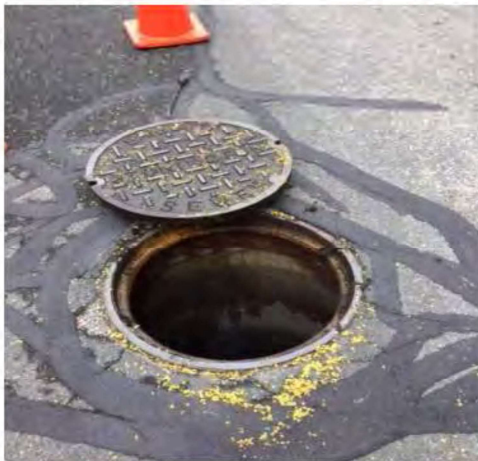
Type of Manhole: SANITARY SEWER (GRAVITY)

Inspection Status: SURFACE INSPECTION: LEVEL 1 (NO MANHOLE ENTRY)

Manhole Location and Configuration



Inspection Photos



**Manhole Inspection Form****Manhole Information****Inspector:** BM AND JC**Date:** 5/3/2022**Weather:** DRY (NO PRECIPITATION DURING SURVEY)**GIS MH No:** 1-182**Type of Manhole:** SANITARY SEWER (GRAVITY)**Inspection Status:** SURFACE INSPECTION: LEVEL 1 (NO MANHOLE ENTRY)**Street:** 11 SLOOP LANE**Location:** LOCAL RURAL STREETS**Rim to Invert (ft):** 8.75**Grade to Rim (in):** 0**Manhole Infiltration****Surcharge:** NO**Number of Holes:** 0**Infiltration:** NO**Metal Riser:** NO**Manhole Characteristics**

Location in MH	Mtrl. Code	Infil. Code	Cond. Code	Repair Codes	Comments
Frame/Cover	CAST IRON	WEEPER	SOUND	NONE	
Chimney	BRICK	NONE	SOUND	NONE	
Cone	CONCRETE (PRECAST)	NONE	SOUND	NONE	
Wall	CONCRETE (PRECAST)	STAINS	SOUND	NONE	
Bench	BRICK	NONE	SOUND	NONE	
Invert/Channel	BRICK	NONE	SOUND	NONE	

Invert Information

Pipe	Direction	Rim to Invert	Pipe Dia. (in)	Pipe Mtrl. Code	Clock Position*	Comments
Pipe 1	OUT	8.75	8	POLY VINYL CHLORIDE	06:00	
Pipe 2	IN	8.75	8	POLY VINYL CHLORIDE	12:00	
Pipe 3						
Pipe 4						
Pipe 5						

**Additional
Comments**



CDM
Smith

Town of Stonington, Connecticut

Manhole Inspection Form

Manhole Information

Inspector: BM AND JC

Date: 5/3/2022

Weather: DRY (NO PRECIPITATION DURING SURVEY)

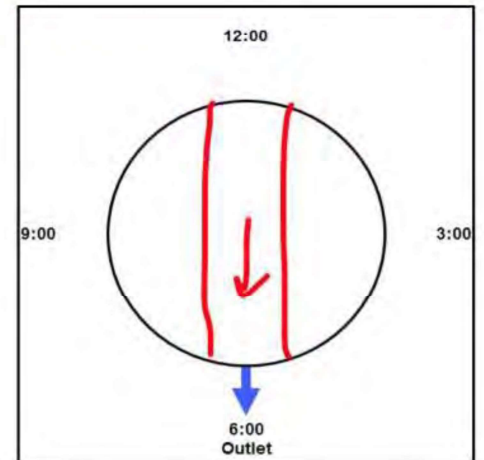
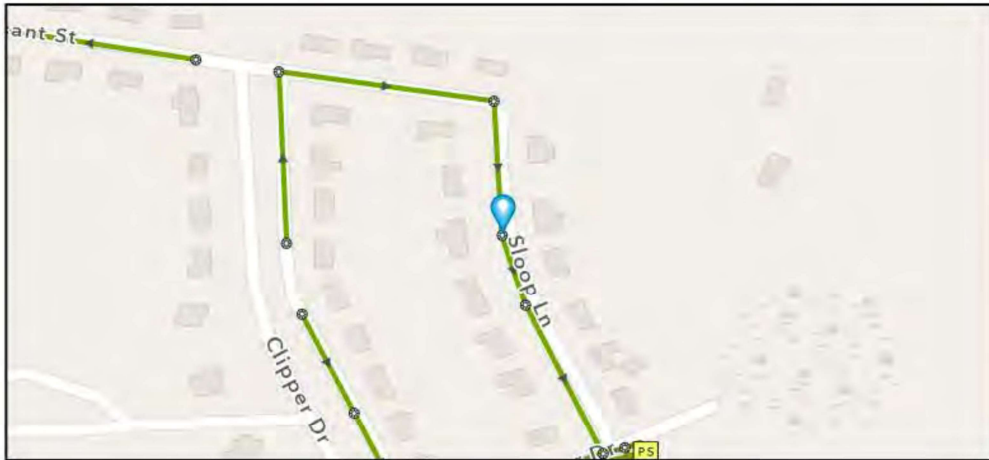
Street: 21 SLOOP LANE

GIS MH No: 1-183

Type of Manhole: SANITARY SEWER (GRAVITY)

Inspection Status: SURFACE INSPECTION: LEVEL 1 (NO MANHOLE ENTRY)

Manhole Location and Configuration



Inspection Photos



**Manhole Inspection Form****Manhole Information****Inspector:** BM AND JC**Date:** 5/3/2022**Weather:** DRY (NO PRECIPITATION DURING SURVEY)**GIS MH No:** 1-183**Type of Manhole:** SANITARY SEWER (GRAVITY)**Inspection Status:** SURFACE INSPECTION: LEVEL 1 (NO MANHOLE ENTRY)**Street:** 21 SLOOP LANE**Location:** LOCAL RURAL STREETS**Rim to Invert (ft):** 8.25**Grade to Rim (in):** 0**Manhole Infiltration****Surcharge:** NO**Number of Holes:** 0**Infiltration:** NO**Metal Riser:** NO**Manhole Characteristics**

Location in MH	Mtrl. Code	Infil. Code	Cond. Code	Repair Codes	Comments
Frame/Cover	CAST IRON	STAINS	SOUND	NONE	
Chimney	OTHER (DESCRIBE IN DETAILS)	NONE	SOUND	NONE	NO CHIMNEY
Cone	CONCRETE (PRECAST)	NONE	SOUND	NONE	
Wall	CONCRETE (PRECAST)	STAINS	SOUND	NONE	
Bench	BRICK	NONE	SOUND	NONE	
Invert/Channel	BRICK	NONE	SOUND	NONE	

Invert Information

Pipe	Direction	Rim to Invert	Pipe Dia. (in)	Pipe Mtrl. Code	Clock Position*	Comments
Pipe 1	OUT	8.25	8	POLY VINYL CHLORIDE	06:00	
Pipe 2	IN	8.25	8	POLY VINYL CHLORIDE	12:00	
Pipe 3						
Pipe 4						
Pipe 5						

**Additional
Comments**