



CDM  
Smith

## Town of Stonington, Connecticut

### Manhole Inspection Form

#### Manhole Information

Inspector: BM AND JC

Date: 5/3/2022

Weather: DRY (NO PRECIPITATION DURING SURVEY)

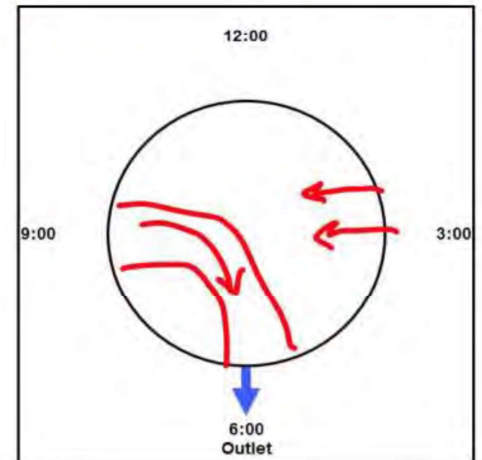
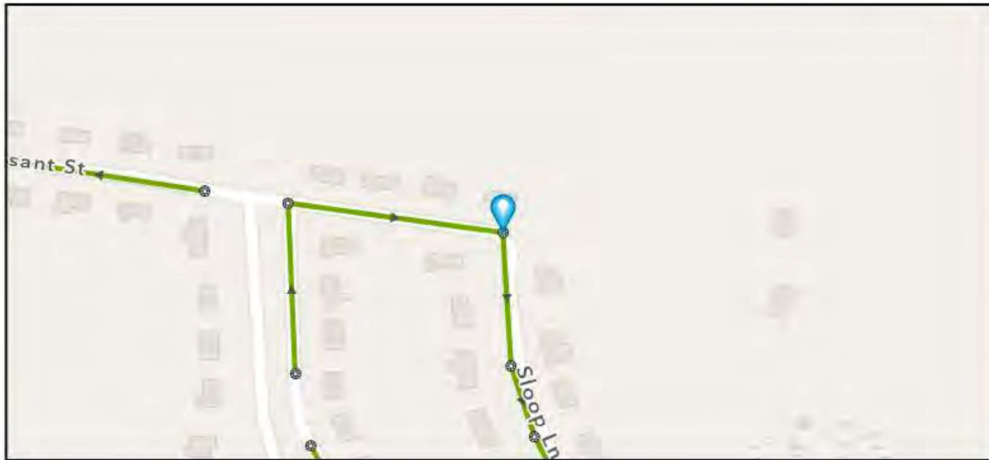
Street: 15 SCHOONER DRIVE

GIS MH No: 1-184

Type of Manhole: SANITARY SEWER (GRAVITY)

Inspection Status: SURFACE INSPECTION: LEVEL 1 (NO MANHOLE ENTRY)

#### Manhole Location and Configuration



#### Inspection Photos



**Manhole Inspection Form****Manhole Information****Inspector:** BM AND JC**Date:** 5/3/2022**Weather:** DRY (NO PRECIPITATION DURING SURVEY)**GIS MH No:** 1-184**Type of Manhole:** SANITARY SEWER (GRAVITY)**Inspection Status:** SURFACE INSPECTION: LEVEL 1 (NO MANHOLE ENTRY)**Street:** 15 SCHOONER DRIVE**Location:** LOCAL RURAL STREETS**Rim to Invert (ft):** 8**Grade to Rim (in):** 0**Manhole Infiltration****Surcharge:** NO**Infiltration:** YES**Number of Holes:** 0**Metal Riser:** NO**Manhole Characteristics**

Location in MH	Mtrl. Code	Infil. Code	Cond. Code	Repair Codes	Comments
Frame/Cover	CAST IRON	NONE	SOUND	NONE	
Chimney	OTHER (DESCRIBE IN DETAILS)	NONE	SOUND	NONE	NO CHIMNEY
Cone	CONCRETE (PRECAST)	NONE	SOUND	NONE	
Wall	CONCRETE (PRECAST)	STAINS	DEFECTIVE	LINE_MANHOLE	
Bench	BRICK	NONE	SOUND	NONE	
Invert/Channel	BRICK	NONE	SOUND	NONE	

**Invert Information**

Pipe	Direction	Rim to Invert	Pipe Dia. (in)	Pipe Mtrl. Code	Clock Position*	Comments
Pipe 1	OUT	8	8	POLY VINYL CHLORIDE	06:00	
Pipe 2	IN	8	8	POLY VINYL CHLORIDE	09:00	
Pipe 3	IN	5	2	POLY VINYL CHLORIDE	03:00	LATERAL
Pipe 4	IN	5	2	POLY VINYL CHLORIDE	03:00	LATERAL
Pipe 5						

**Additional  
Comments**





**CDM  
Smith**

## Town of Stonington, Connecticut

### Manhole Inspection Form

#### Manhole Information

**Inspector:** BM AND JC

**Date:** 5/3/2022

**Weather:** DRY (NO PRECIPITATION DURING SURVEY)

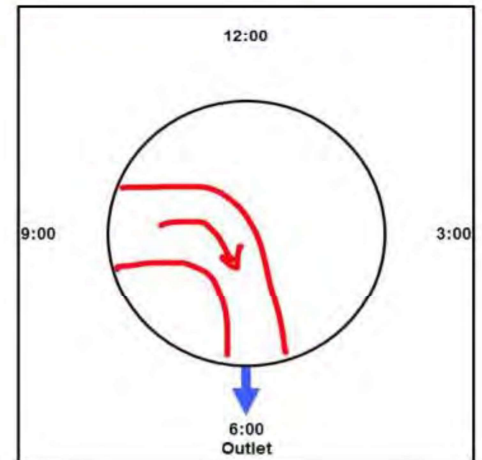
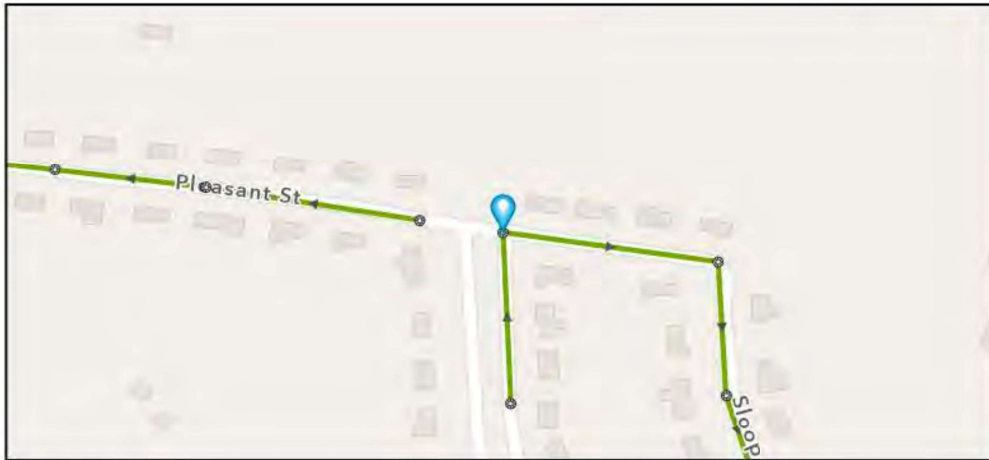
**Street:** 3 SCHOONER DRIVE

**GIS MH No:** 1-185

**Type of Manhole:** SANITARY SEWER (GRAVITY)

**Inspection Status:** SURFACE INSPECTION: LEVEL 1 (NO MANHOLE ENTRY)

#### Manhole Location and Configuration



#### Inspection Photos



**Manhole Inspection Form****Manhole Information****Inspector:** BM AND JC**Date:** 5/3/2022**Weather:** DRY (NO PRECIPITATION DURING SURVEY)**GIS MH No:** 1-185**Type of Manhole:** SANITARY SEWER (GRAVITY)**Inspection Status:** SURFACE INSPECTION: LEVEL 1 (NO MANHOLE ENTRY)**Street:** 3 SCHOONER DRIVE**Location:** LOCAL RURAL STREETS**Rim to Invert (ft):** 8.5**Grade to Rim (in):** 0**Manhole Infiltration****Surcharge:** NO**Infiltration:** YES**Number of Holes:** 0**Metal Riser:** YES**Manhole Characteristics**

Location in MH	Mtrl. Code	Infil. Code	Cond. Code	Repair Codes	Comments
Frame/Cover	CAST IRON	STAINS	SOUND	NONE	
Chimney	BRICK	NONE	SOUND	NONE	
Cone	CONCRETE (PRECAST)	NONE	SOUND	NONE	
Wall	CONCRETE (PRECAST)	STAINS	SOUND	NONE	
Bench	BRICK	NONE	SOUND	NONE	
Invert/Channel	BRICK	NONE	SOUND	NONE	

**Invert Information**

Pipe	Direction	Rim to Invert	Pipe Dia. (in)	Pipe Mtrl. Code	Clock Position*	Comments
Pipe 1	OUT	8.5	8	POLY VINYL CHLORIDE	06:00	
Pipe 2	IN	8.5	8	POLY VINYL CHLORIDE	09:00	
Pipe 3						
Pipe 4						
Pipe 5						

**Additional  
Comments**





CDM  
Smith

## Town of Stonington, Connecticut

### Manhole Inspection Form

#### Manhole Information

Inspector: BM AND JC

Date: 5/3/2022

Weather: DRY (NO PRECIPITATION DURING SURVEY)

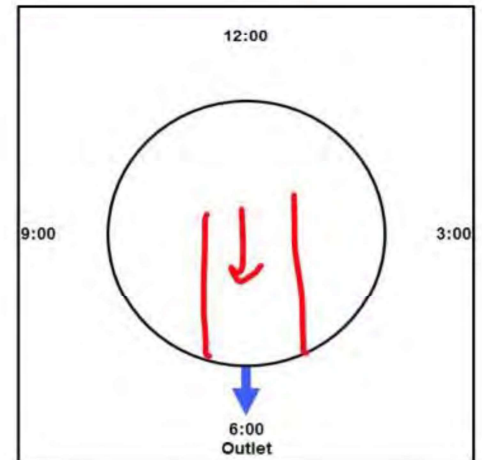
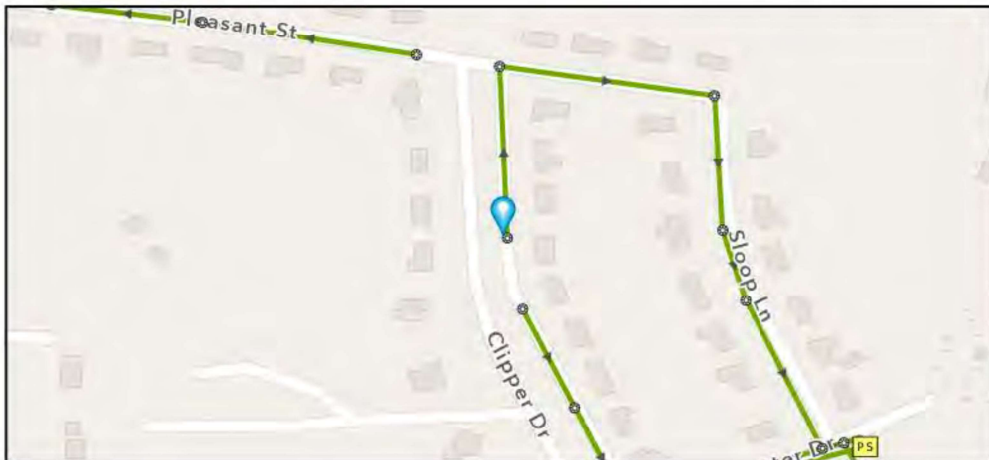
Street: 36 CLIPPER DRIVE

GIS MH No: 1-186

Type of Manhole: SANITARY SEWER (GRAVITY)

Inspection Status: SURFACE INSPECTION: LEVEL 1 (NO MANHOLE ENTRY)

#### Manhole Location and Configuration



#### Inspection Photos



**Manhole Inspection Form****Manhole Information****Inspector:** BM AND JC**Date:** 5/3/2022**Weather:** DRY (NO PRECIPITATION DURING SURVEY)**GIS MH No:** 1-186**Type of Manhole:** SANITARY SEWER (GRAVITY)**Inspection Status:** SURFACE INSPECTION: LEVEL 1 (NO MANHOLE ENTRY)**Street:** 36 CLIPPER DRIVE**Location:** LOCAL RURAL STREETS**Rim to Invert (ft):** 9.5**Grade to Rim (in):** 0**Manhole Infiltration****Surcharge:** NO**Infiltration:** NO**Number of Holes:** 2**Metal Riser:** YES**Manhole Characteristics**

Location in MH	Mtrl. Code	Infil. Code	Cond. Code	Repair Codes	Comments
Frame/Cover	CAST IRON	NONE	SOUND	NONE	
Chimney	BRICK	NONE	SOUND	NONE	
Cone	CONCRETE (PRECAST)	NONE	SOUND	NONE	
Wall	CONCRETE (PRECAST)	NONE	SOUND	NONE	
Bench	BRICK	NONE	SOUND	NONE	
Invert/Channel	BRICK	NONE	SOUND	NONE	

**Invert Information**

Pipe	Direction	Rim to Invert	Pipe Dia. (in)	Pipe Mtrl. Code	Clock Position*	Comments
Pipe 1	OUT	9.5	8	POLY VINYL CHLORIDE	06:00	
Pipe 2						
Pipe 3						
Pipe 4						
Pipe 5						

**Additional  
Comments**





CDM  
Smith

# Town of Stonington, Connecticut

## Manhole Inspection Form

### Manhole Information

Inspector: BM AND JC

Date: 5/3/2022

Weather: DRY (NO PRECIPITATION DURING SURVEY)

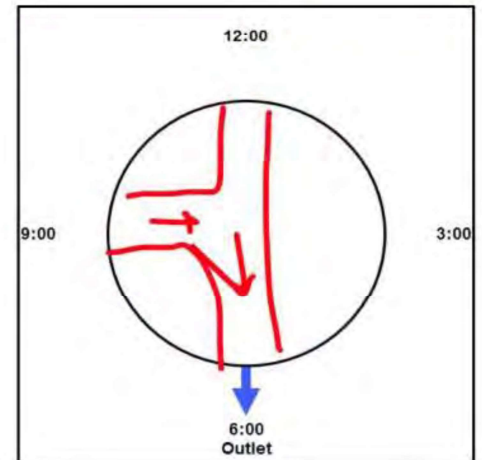
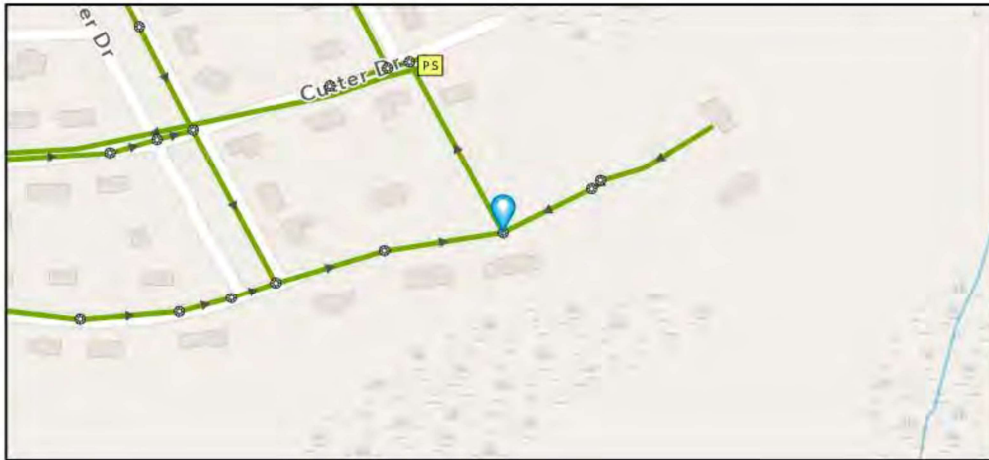
Street: 12 ROSSIE ST

GIS MH No: 1-187

Type of Manhole: SANITARY SEWER (GRAVITY)

Inspection Status: SURFACE INSPECTION: LEVEL 1 (NO MANHOLE ENTRY)

### Manhole Location and Configuration



### Inspection Photos



**Manhole Inspection Form****Manhole Information****Inspector:** BM AND JC**Date:** 5/3/2022**Weather:** DRY (NO PRECIPITATION DURING SURVEY)**GIS MH No:** 1-187**Type of Manhole:** SANITARY SEWER (GRAVITY)**Inspection Status:** SURFACE INSPECTION: LEVEL 1 (NO MANHOLE ENTRY)**Street:** 12 ROSSIE ST**Location:** LOCAL RURAL STREETS**Rim to Invert (ft):** 11.25**Grade to Rim (in):** 0**Manhole Infiltration****Surcharge:** NO**Number of Holes:** 0**Infiltration:** NO**Metal Riser:** NO**Manhole Characteristics**

Location in MH	Mtrl. Code	Infil. Code	Cond. Code	Repair Codes	Comments
Frame/Cover	CAST IRON	STAINS	SOUND	NONE	
Chimney	BRICK	NONE	SOUND	NONE	
Cone	CONCRETE (PRECAST)	NONE	SOUND	NONE	
Wall	CONCRETE (PRECAST)	NONE	SOUND	NONE	
Bench	BRICK	NONE	SOUND	NONE	
Invert/Channel	BRICK	NONE	SOUND	NONE	

**Invert Information**

Pipe	Direction	Rim to Invert	Pipe Dia. (in)	Pipe Mtrl. Code	Clock Position*	Comments
Pipe 1	OUT	11.25	8	POLY VINYL CHLORIDE	06:00	
Pipe 2	IN	11.25	8	POLY VINYL CHLORIDE	09:00	
Pipe 3	IN	11.25	8	POLY VINYL CHLORIDE	12:00	
Pipe 4						
Pipe 5						

**Additional  
Comments**





Manhole Inspection Form

Manhole Information

Inspector: BM AND JC

Date: 5/3/2022

Weather: DRY (NO PRECIPITATION DURING SURVEY)

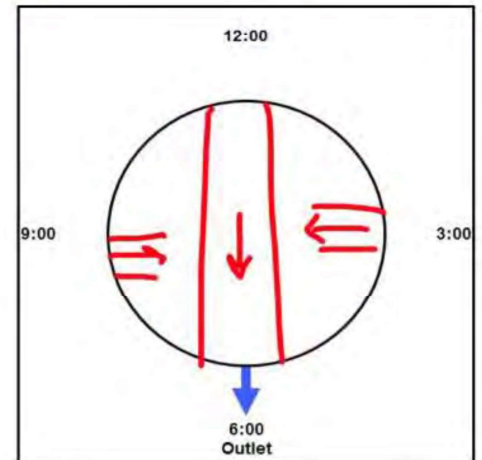
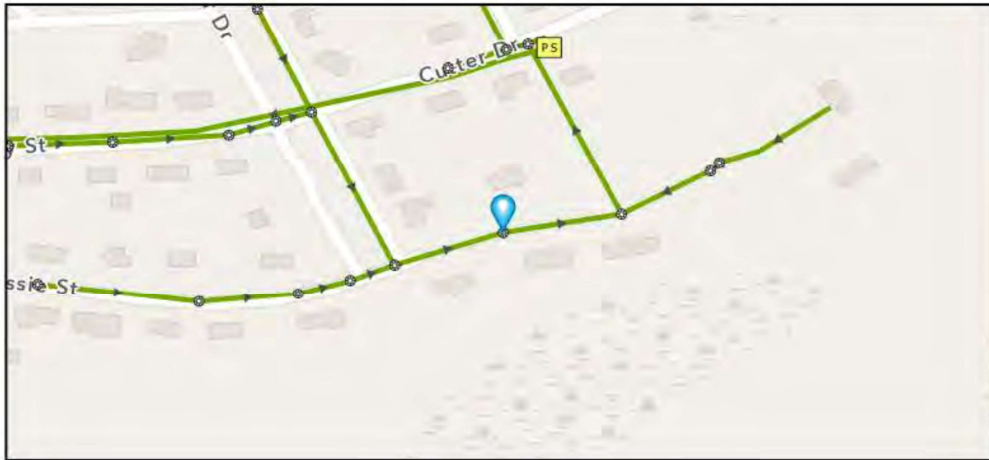
Street: 8 ROSSIE ST

GIS MH No: 1-188

Type of Manhole: SANITARY SEWER (GRAVITY)

Inspection Status: SURFACE INSPECTION: LEVEL 1 (NO MANHOLE ENTRY)

Manhole Location and Configuration



Inspection Photos



**Manhole Inspection Form****Manhole Information****Inspector:** BM AND JC**Date:** 5/3/2022**Weather:** DRY (NO PRECIPITATION DURING SURVEY)**GIS MH No:** 1-188**Type of Manhole:** SANITARY SEWER (GRAVITY)**Inspection Status:** SURFACE INSPECTION: LEVEL 1 (NO MANHOLE ENTRY)**Street:** 8 ROSSIE ST**Location:** LOCAL RURAL STREETS**Rim to Invert (ft):** 10.75**Grade to Rim (in):** 0**Manhole Infiltration****Surcharge:** NO**Number of Holes:** 0**Infiltration:** NO**Metal Riser:** NO**Manhole Characteristics**

Location in MH	Mtrl. Code	Infil. Code	Cond. Code	Repair Codes	Comments
Frame/Cover	CAST IRON	WEEPER	BROKEN	REPLACE FRAME AND COVER	
Chimney	CONCRETE BLOCK	NONE	SOUND	NONE	
Cone	CONCRETE (PRECAST)	NONE	SOUND	NONE	
Wall	CONCRETE (PRECAST)	NONE	SOUND	NONE	
Bench	BRICK	NONE	SOUND	NONE	
Invert/Channel	BRICK	NONE	SOUND	NONE	

**Invert Information**

Pipe	Direction	Rim to Invert	Pipe Dia. (in)	Pipe Mtrl. Code	Clock Position*	Comments
Pipe 1	OUT	10.75	8	POLY VINYL CHLORIDE	06:00	
Pipe 2	IN	10.75	4	POLY VINYL CHLORIDE	08:00	LATERAL
Pipe 3	IN	10.75	8	POLY VINYL CHLORIDE	12:00	
Pipe 4	IN	10.75	4	POLY VINYL CHLORIDE	03:00	LATERAL
Pipe 5						

**Additional  
Comments**





Manhole Inspection Form

Manhole Information

Inspector: BM AND JC

Date: 5/3/2022

Weather: DRY (NO PRECIPITATION DURING SURVEY)

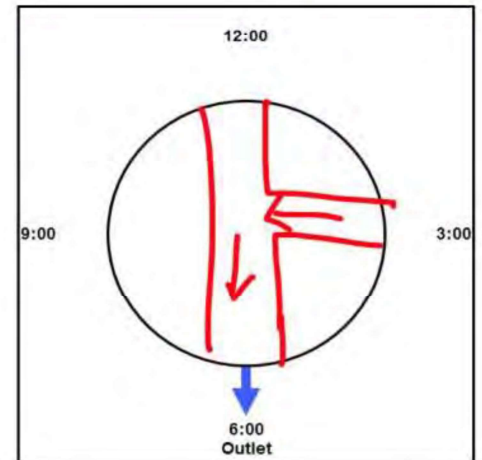
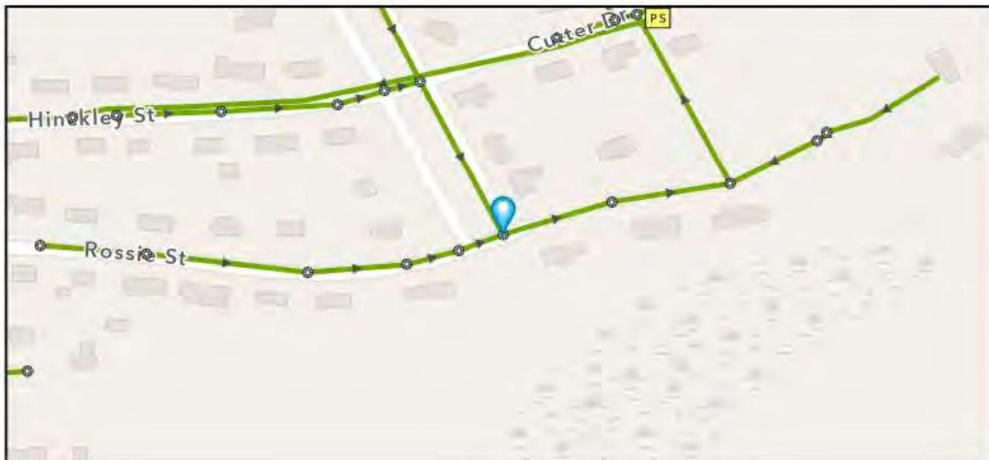
Street: ROSSIE STREET

GIS MH No: 1-189

Type of Manhole: SANITARY SEWER (GRAVITY)

Inspection Status: SURFACE INSPECTION: LEVEL 1 (NO MANHOLE ENTRY)

Manhole Location and Configuration



Inspection Photos





# Town of Stonington, Connecticut

## Manhole Inspection Form

### Manhole Information

Inspector: BM AND JC

Date: 5/3/2022

Weather: DRY (NO PRECIPITATION DURING SURVEY)

Street: ROSSIE STREET

Location: LOCAL RURAL STREETS

GIS MH No: 1-189

Type of Manhole: SANITARY SEWER (GRAVITY)

Inspection Status: SURFACE INSPECTION; LEVEL 1 (NO MANHOLE ENTRY)

Rim to Invert (ft): 8.25

Grade to Rim (in): 0

### Manhole Infiltration

Surcharge: NO

Infiltration: YES

Number of Holes: 0

Metal Riser: NO

### Manhole Characteristics

Location in MH	Mtrl. Code	Infil. Code	Cond. Code	Repair Codes	Comments
Frame/Cover	CAST IRON	NONE	SOUND	NONE	
Chimney	CONCRETE BLOCK	NONE	DEFECTIVE	RESET EXISTING FRAME AND CHIMNEY	CHIMNEY DEGRADING
Cone	CONCRETE (PRECAST)	NONE	SOUND	NONE	
Wall	CONCRETE (PRECAST)	WEEPER	DEFECTIVE	LINE_MANHOLE	
Bench	BRICK	NONE	SOUND	NONE	
Invert/Channel	BRICK	NONE	SOUND	NONE	

### Invert Information

Pipe	Direction	Rim to Invert	Pipe Dia. (in)	Pipe Mtrl. Code	Clock Position*	Comments
Pipe 1	OUT	8.25	8	POLY VINYL CHLORIDE	06:00	
Pipe 2	IN	8.25	8	POLY VINYL CHLORIDE	12:00	
Pipe 3	IN	8.25	8	POLY VINYL CHLORIDE	03:00	
Pipe 4						
Pipe 5						

Additional  
Comments

\*6:00 is outlet





CDM  
Smith

# Town of Stonington, Connecticut

## Manhole Inspection Form

### Manhole Information

Inspector: BM AND JC

Date: 5/3/2022

Weather: DRY (NO PRECIPITATION DURING SURVEY)

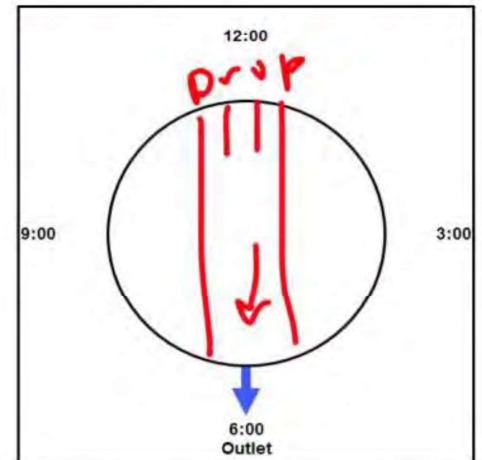
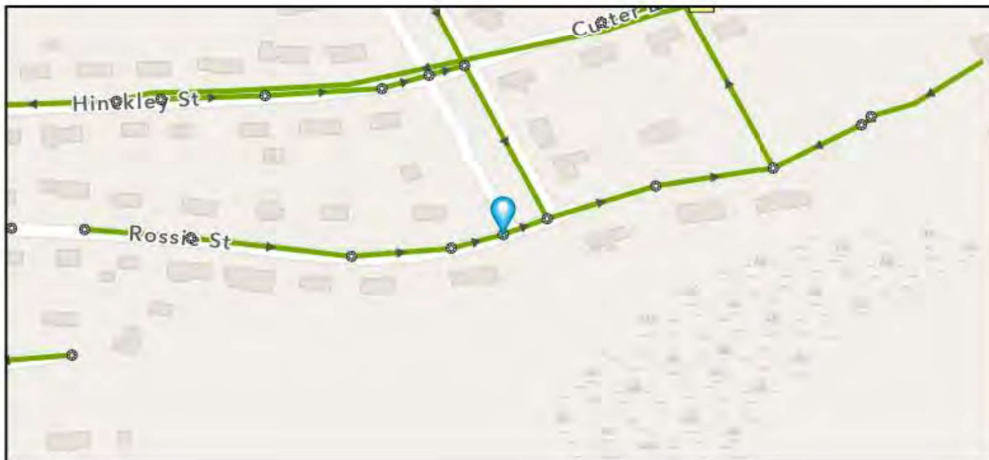
Street: ROSSIE STREET

GIS MH No: 1-190

Type of Manhole: SANITARY SEWER (GRAVITY)

Inspection Status: SURFACE INSPECTION: LEVEL 1 (NO MANHOLE ENTRY)

### Manhole Location and Configuration



### Inspection Photos



**Manhole Inspection Form****Manhole Information****Inspector:** BM AND JC**Date:** 5/3/2022**Weather:** DRY (NO PRECIPITATION DURING SURVEY)**GIS MH No:** 1-190**Type of Manhole:** SANITARY SEWER (GRAVITY)**Inspection Status:** SURFACE INSPECTION: LEVEL 1 (NO MANHOLE ENTRY)**Street:** ROSSIE STREET**Rim to Invert (ft):** 9.75**Location:** LOCAL RURAL STREETS**Grade to Rim (in):** 0**Manhole Infiltration****Surcharge:** NO**Number of Holes:** 2**Infiltration:** NO**Metal Riser:** YES**Manhole Characteristics**

Location in MH	Mtrl. Code	Infil. Code	Cond. Code	Repair Codes	Comments
Frame/Cover	CAST IRON	STAINS	SOUND	NONE	
Chimney	BRICK	NONE	SOUND	NONE	
Cone	CONCRETE (PRECAST)	NONE	SOUND	NONE	
Wall	CONCRETE (PRECAST)	NONE	SOUND	NONE	
Bench	BRICK	NONE	SOUND	NONE	
Invert/Channel	BRICK	NONE	SOUND	NONE	

**Invert Information**

Pipe	Direction	Rim to Invert	Pipe Dia. (in)	Pipe Mtrl. Code	Clock Position*	Comments
Pipe 1	OUT		8	POLY VINYL CHLORIDE	06:00	
Pipe 2	IN		8	POLY VINYL CHLORIDE	12:00	TOP OF DROP
Pipe 3	IN	9.75	8	POLY VINYL CHLORIDE	12:00	BOTTOM OF DROP
Pipe 4						
Pipe 5						

**Additional  
Comments**





CDM  
Smith

# Town of Stonington, Connecticut

## Manhole Inspection Form

### Manhole Information

Inspector: BM AND JC

Date: 5/3/2022

Weather: DRY (NO PRECIPITATION DURING SURVEY)

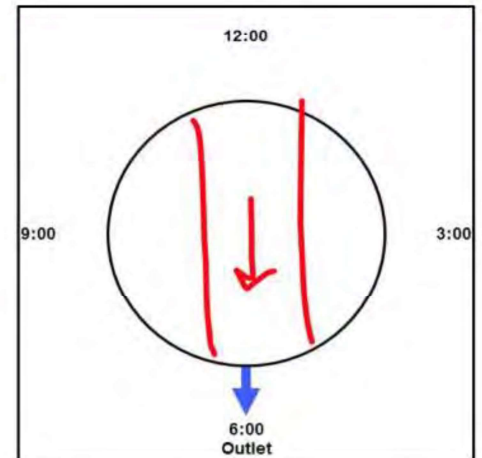
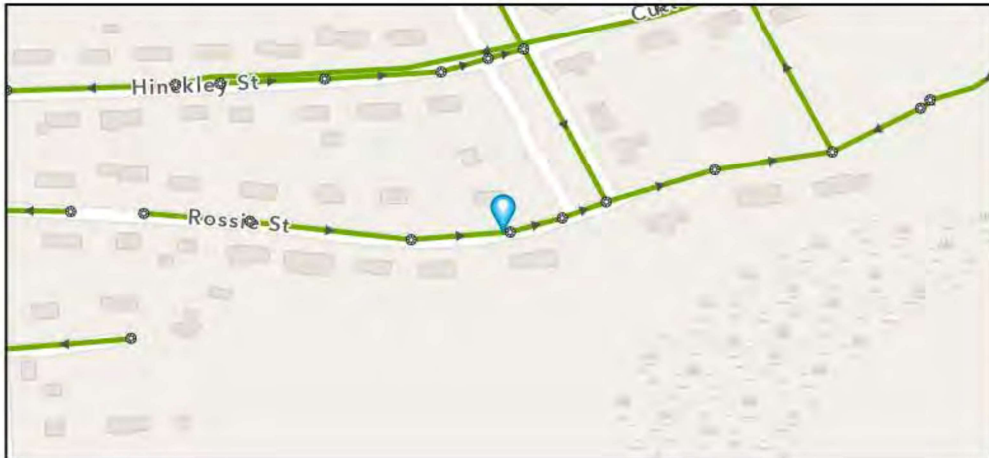
Street: 39 ROSSIE ST

GIS MH No: 1-191

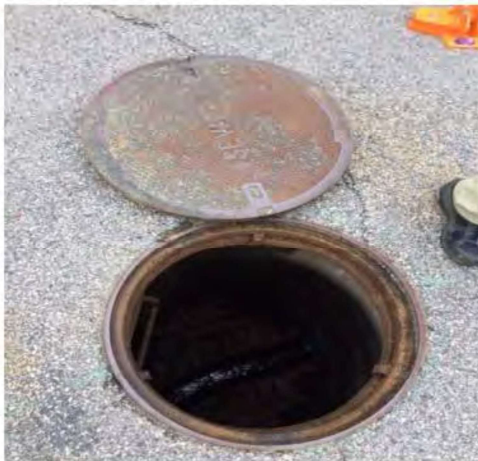
Type of Manhole: SANITARY SEWER (GRAVITY)

Inspection Status: SURFACE INSPECTION: LEVEL 1 (NO MANHOLE ENTRY)

### Manhole Location and Configuration



### Inspection Photos



**Manhole Inspection Form****Manhole Information****Inspector:** BM AND JC**Date:** 5/3/2022**Weather:** DRY (NO PRECIPITATION DURING SURVEY)**GIS MH No:** 1-191**Type of Manhole:** SANITARY SEWER (GRAVITY)**Inspection Status:** SURFACE INSPECTION: LEVEL 1 (NO MANHOLE ENTRY)**Street:** 39 ROSSIE ST**Location:** LOCAL RURAL STREETS**Rim to Invert (ft):** 9**Grade to Rim (in):** 0**Manhole Infiltration****Surcharge:** NO**Infiltration:** NO**Number of Holes:** 0**Metal Riser:** YES**Manhole Characteristics**

Location in MH	Mtrl. Code	Infil. Code	Cond. Code	Repair Codes	Comments
Frame/Cover	CAST IRON	STAINS	SOUND	NONE	
Chimney	BRICK	NONE	SOUND	NONE	
Cone	CONCRETE (PRECAST)	NONE	SOUND	NONE	
Wall	CONCRETE (PRECAST)	NONE	SOUND	NONE	
Bench	BRICK	NONE	SOUND	NONE	
Invert/Channel	BRICK	NONE	SOUND	NONE	

**Invert Information**

Pipe	Direction	Rim to Invert	Pipe Dia. (in)	Pipe Mtrl. Code	Clock Position*	Comments
Pipe 1	OUT	9	8	POLY VINYL CHLORIDE	06:00	
Pipe 2	IN	9	8	POLY VINYL CHLORIDE	12:00	
Pipe 3						
Pipe 4						
Pipe 5						

**Additional  
Comments**





CDM  
Smith

## Town of Stonington, Connecticut

### Manhole Inspection Form

#### Manhole Information

Inspector: BM AND JC

Date: 5/3/2022

Weather: DRY (NO PRECIPITATION DURING SURVEY)

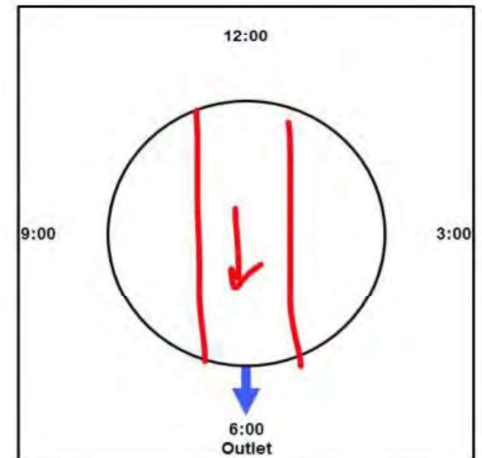
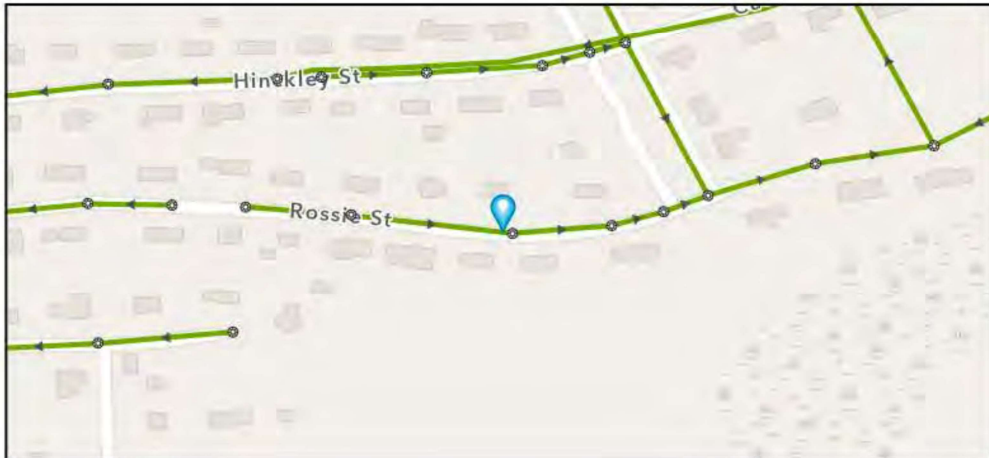
Street: 37 ROSSIE STREET

GIS MH No: 1-192

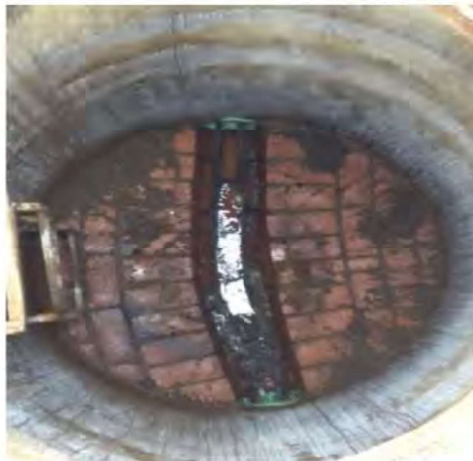
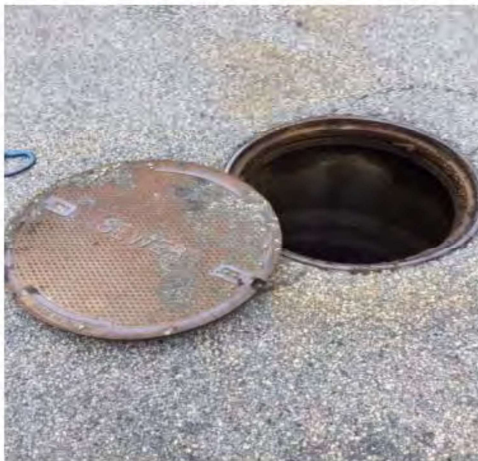
Type of Manhole: SANITARY SEWER (GRAVITY)

Inspection Status: SURFACE INSPECTION: LEVEL 1 (NO MANHOLE ENTRY)

#### Manhole Location and Configuration



#### Inspection Photos



**Manhole Inspection Form****Manhole Information****Inspector:** BM AND JC**Date:** 5/3/2022**Weather:** DRY (NO PRECIPITATION DURING SURVEY)**GIS MH No:** 1-192**Type of Manhole:** SANITARY SEWER (GRAVITY)**Inspection Status:** SURFACE INSPECTION: LEVEL 1 (NO MANHOLE ENTRY)**Street:** 37 ROSSIE STREET**Location:** LOCAL RURAL STREETS**Rim to Invert (ft):** 8.5**Grade to Rim (in):** 0**Manhole Infiltration****Surcharge:** NO**Infiltration:** NO**Number of Holes:** 0**Metal Riser:** YES**Manhole Characteristics**

Location in MH	Mtrl. Code	Infil. Code	Cond. Code	Repair Codes	Comments
Frame/Cover	CAST IRON	WEEPER	SOUND	NONE	
Chimney	BRICK	NONE	SOUND	NONE	
Cone	CONCRETE (PRECAST)	NONE	SOUND	NONE	
Wall	CONCRETE (PRECAST)	NONE	SOUND	NONE	
Bench	BRICK	NONE	SOUND	NONE	
Invert/Channel	BRICK	NONE	SOUND	NONE	

**Invert Information**

Pipe	Direction	Rim to Invert	Pipe Dia. (in)	Pipe Mtrl. Code	Clock Position*	Comments
Pipe 1	OUT	8.5	8	POLY VINYL CHLORIDE	06:00	
Pipe 2	IN	8.5	8	POLY VINYL CHLORIDE	12:00	
Pipe 3						
Pipe 4						
Pipe 5						

**Additional  
Comments**





CDM  
Smith

## Town of Stonington, Connecticut

### Manhole Inspection Form

#### Manhole Information

Inspector: BM AND JC

Date: 5/3/2022

Weather: DRY (NO PRECIPITATION DURING SURVEY)

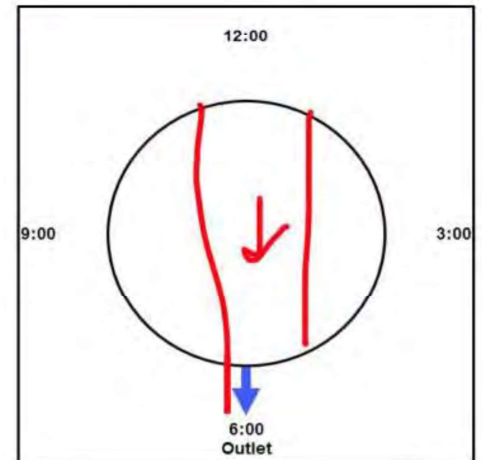
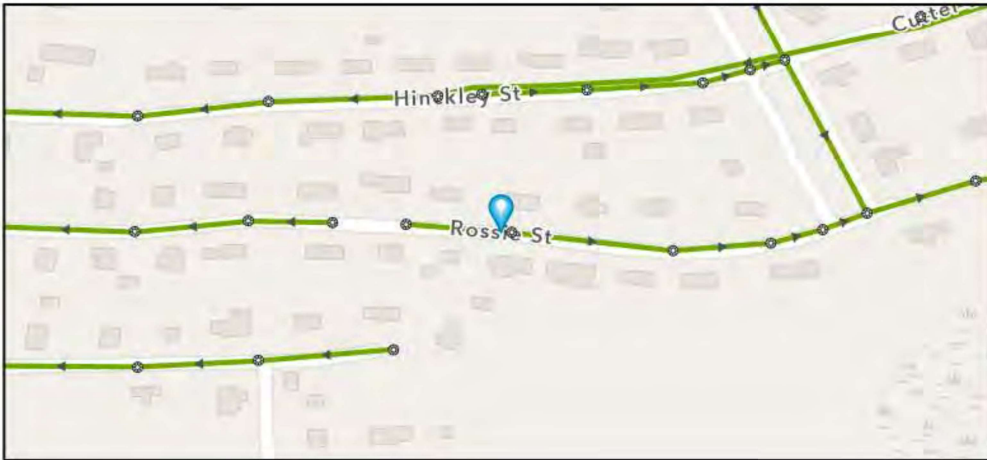
Street: 31 ROSSIE STREET

GIS MH No: 1-193

Type of Manhole: SANITARY SEWER (GRAVITY)

Inspection Status: SURFACE INSPECTION: LEVEL 1 (NO MANHOLE ENTRY)

#### Manhole Location and Configuration



#### Inspection Photos



**Manhole Inspection Form****Manhole Information****Inspector:** BM AND JC**Date:** 5/3/2022**Weather:** DRY (NO PRECIPITATION DURING SURVEY)**GIS MH No:** 1-193**Type of Manhole:** SANITARY SEWER (GRAVITY)**Inspection Status:** SURFACE INSPECTION: LEVEL 1 (NO MANHOLE ENTRY)**Street:** 31 ROSSIE STREET**Location:** LOCAL RURAL STREETS**Rim to Invert (ft):** 9.25**Grade to Rim (in):** 0**Manhole Infiltration****Surcharge:** NO**Infiltration:** NO**Number of Holes:** 0**Metal Riser:** YES**Manhole Characteristics**

Location in MH	Mtrl. Code	Infil. Code	Cond. Code	Repair Codes	Comments
Frame/Cover	CAST IRON	STAINS	SOUND	NONE	
Chimney	BRICK	NONE	SOUND	NONE	
Cone	CONCRETE (PRECAST)	NONE	SOUND	NONE	
Wall	CONCRETE (PRECAST)	NONE	SOUND	NONE	
Bench	BRICK	NONE	SOUND	NONE	
Invert/Channel	BRICK	NONE	SOUND	NONE	

**Invert Information**

Pipe	Direction	Rim to Invert	Pipe Dia. (in)	Pipe Mtrl. Code	Clock Position*	Comments
Pipe 1	OUT	9.25	8	POLY VINYL CHLORIDE	06:00	
Pipe 2	IN	9.25	8	POLY VINYL CHLORIDE	12:00	
Pipe 3						
Pipe 4						
Pipe 5						

**Additional  
Comments**





Manhole Inspection Form

Manhole Information

Inspector: BM AND JC

Date: 5/3/2022

Weather: DRY (NO PRECIPITATION DURING SURVEY)

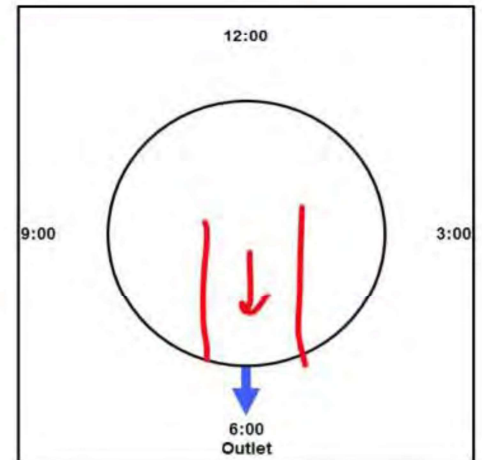
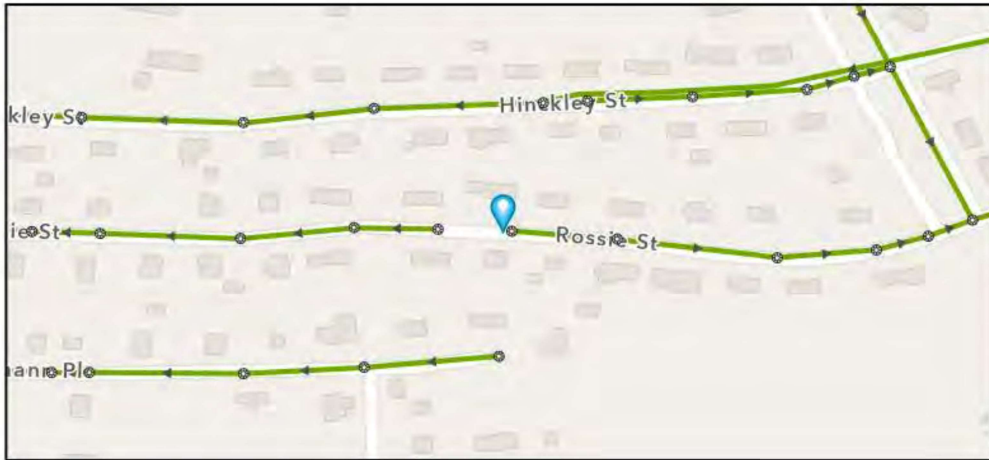
Street: 29 ROSSIE ST

GIS MH No: 1-194

Type of Manhole: SANITARY SEWER (GRAVITY)

Inspection Status: SURFACE INSPECTION: LEVEL 1 (NO MANHOLE ENTRY)

Manhole Location and Configuration



Inspection Photos



**Manhole Inspection Form****Manhole Information****Inspector:** BM AND JC**Date:** 5/3/2022**Weather:** DRY (NO PRECIPITATION DURING SURVEY)**Street:** 29 ROSSIE ST**Location:** LOCAL RURAL STREETS**GIS MH No:** 1-194**Type of Manhole:** SANITARY SEWER (GRAVITY)**Inspection Status:** SURFACE INSPECTION: LEVEL 1 (NO MANHOLE ENTRY)**Rim to Invert (ft):** 9.25**Grade to Rim (in):** 0**Manhole Infiltration****Surcharge:** NO**Infiltration:** NO**Number of Holes:** 4**Metal Riser:** NO**Manhole Characteristics**

Location in MH	Mtrl. Code	Infil. Code	Cond. Code	Repair Codes	Comments
Frame/Cover	CAST IRON	STAINS	SOUND	NONE	
Chimney	BRICK	NONE	SOUND	NONE	
Cone	CONCRETE (PRECAST)	NONE	SOUND	NONE	
Wall	CONCRETE (PRECAST)	NONE	SOUND	NONE	
Bench	BRICK	NONE	SOUND	NONE	
Invert/Channel	BRICK	NONE	SOUND	NONE	

**Invert Information**

Pipe	Direction	Rim to Invert	Pipe Dia. (in)	Pipe Mtrl. Code	Clock Position*	Comments
Pipe 1	OUT	9.25	8	POLY VINYL CHLORIDE	06:00	
Pipe 2						
Pipe 3						
Pipe 4						
Pipe 5						

**Additional  
Comments**





# Town of Stonington, Connecticut

## Manhole Inspection Form

### Manhole Information

Inspector: BM AND JC

Date: 5/3/2022

Weather: DRY (NO PRECIPITATION DURING SURVEY)

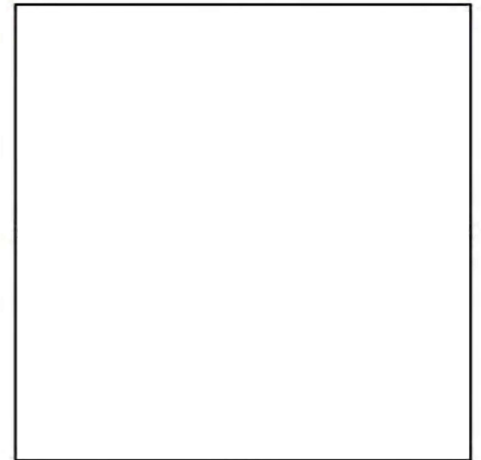
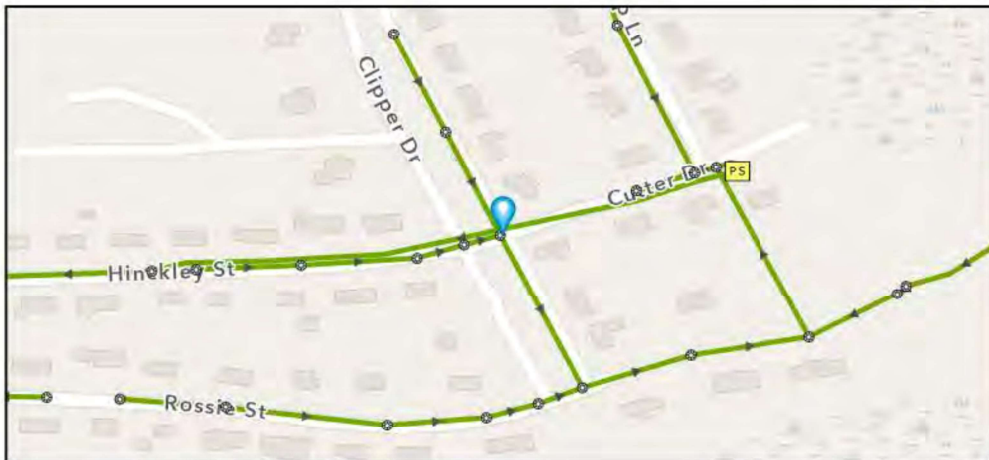
Street: CUTTER/ CLIPPER INTERSECTION

GIS MH No: 1-195

Type of Manhole:

Inspection Status: NOT FOUND

### Manhole Location and Configuration



### Inspection Photos





# Town of Stonington, Connecticut

## Manhole Inspection Form

### Manhole Information

Inspector: BM AND JC

GIS MH No: 1-195

Date: 5/3/2022

Type of Manhole:

Weather: DRY (NO PRECIPITATION DURING SURVEY)

Inspection Status: NOT FOUND

Street: CUTTER/ CLIPPER INTERSECTION

Rim to Invert (ft):

Location: LOCAL RURAL STREETS

Grade to Rim (in):

### Manhole Infiltration

Surcharge:

Number of Holes:

Infiltration:

Metal Riser:

### Manhole Characteristics

Location in MH	Mtrl. Code	Infil. Code	Cond. Code	Repair Codes	Comments
Frame/Cover					
Chimney					
Cone					
Wall					
Bench					
Invert/Channel					

### Invert Information

Pipe	Direction	Rim to Invert	Pipe Dia. (in)	Pipe Mtrl. Code	Clock Position*	Comments
Pipe 1						
Pipe 2						
Pipe 3						
Pipe 4						
Pipe 5						

Additional  
Comments





CDM  
Smith

## Town of Stonington, Connecticut

### Manhole Inspection Form

#### Manhole Information

Inspector: BM AND JC

Date: 5/3/2022

Weather: DRY (NO PRECIPITATION DURING SURVEY)

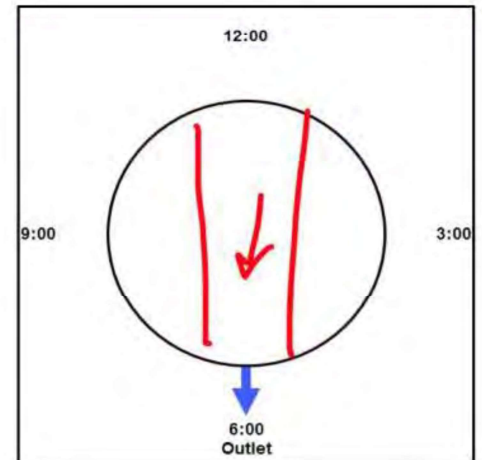
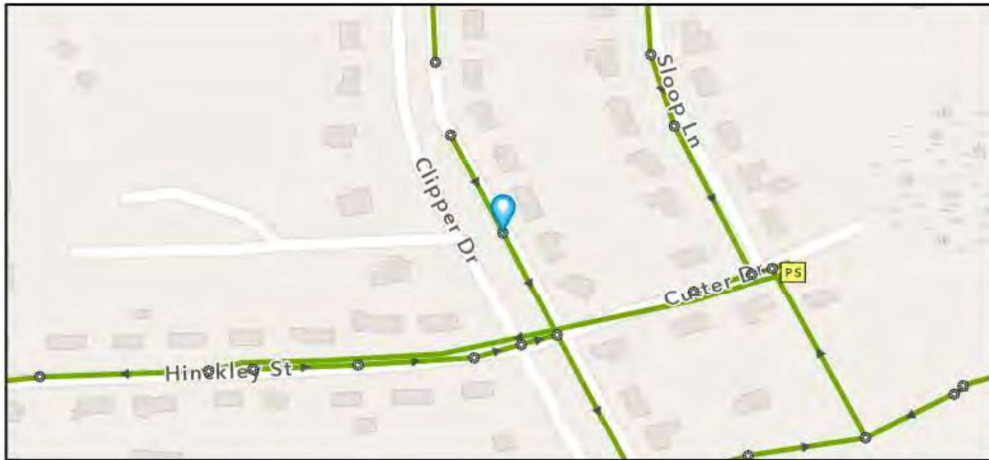
Street: 24 CLIPPER DRIVE

GIS MH No: 1-196

Type of Manhole: SANITARY SEWER (GRAVITY)

Inspection Status: SURFACE INSPECTION: LEVEL 1 (NO MANHOLE ENTRY)

#### Manhole Location and Configuration



#### Inspection Photos



**Manhole Inspection Form****Manhole Information****Inspector:** BM AND JC**Date:** 5/3/2022**Weather:** DRY (NO PRECIPITATION DURING SURVEY)**GIS MH No:** 1-196**Type of Manhole:** SANITARY SEWER (GRAVITY)**Inspection Status:** SURFACE INSPECTION: LEVEL 1 (NO MANHOLE ENTRY)**Street:** 24 CLIPPER DRIVE**Location:** LOCAL RURAL STREETS**Rim to Invert (ft):** 8.5**Grade to Rim (in):** -2**Manhole Infiltration****Surcharge:** NO**Infiltration:** NO**Number of Holes:** 3**Metal Riser:** YES**Manhole Characteristics**

Location in MH	Mtrl. Code	Infil. Code	Cond. Code	Repair Codes	Comments
Frame/Cover	CAST IRON	STAINS	SOUND	ADD RISER RING TO FRAME AND CHIMNEY	
Chimney	BRICK	NONE	SOUND	NONE	
Cone	CONCRETE (PRECAST)	NONE	SOUND	NONE	
Wall	CONCRETE (PRECAST)	NONE	SOUND	NONE	
Bench	BRICK	NONE	SOUND	NONE	
Invert/Channel	BRICK	NONE	SOUND	NONE	

**Invert Information**

Pipe	Direction	Rim to Invert	Pipe Dia. (in)	Pipe Mtrl. Code	Clock Position*	Comments
Pipe 1	OUT	8.5	8	POLY VINYL CHLORIDE	06:00	
Pipe 2	IN	8.5	8	POLY VINYL CHLORIDE	12:00	
Pipe 3						
Pipe 4						
Pipe 5						

**Additional  
Comments**





CDM  
Smith

# Town of Stonington, Connecticut

## Manhole Inspection Form

### Manhole Information

Inspector: BM AND JC

Date: 5/3/2022

Weather: DRY (NO PRECIPITATION DURING SURVEY)

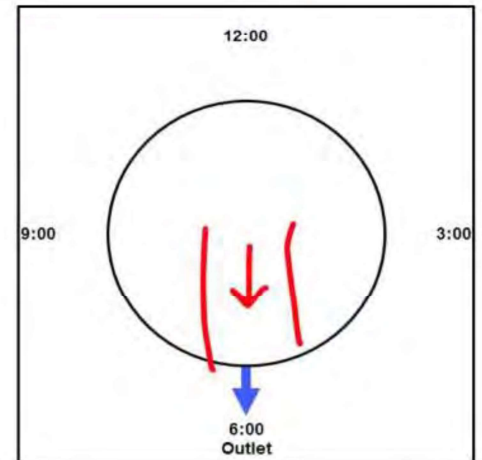
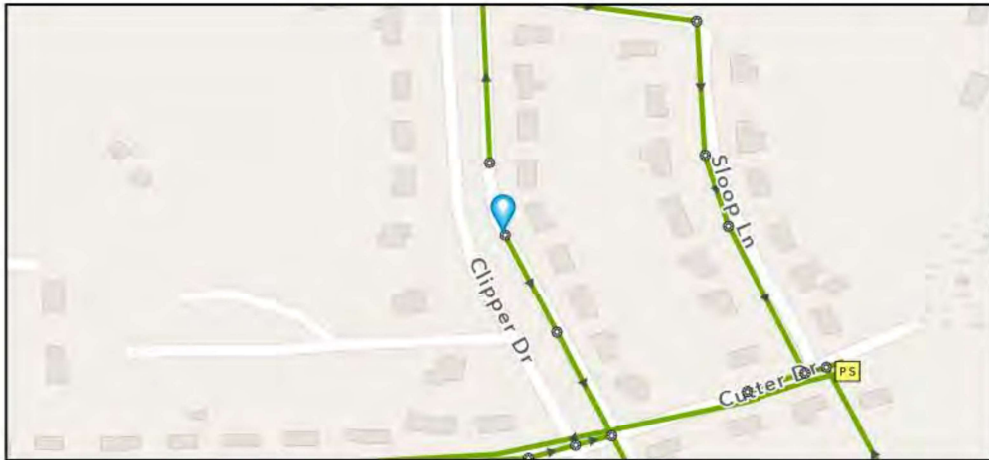
Street: 32 CLIPPER DRIVE

GIS MH No: 1-197

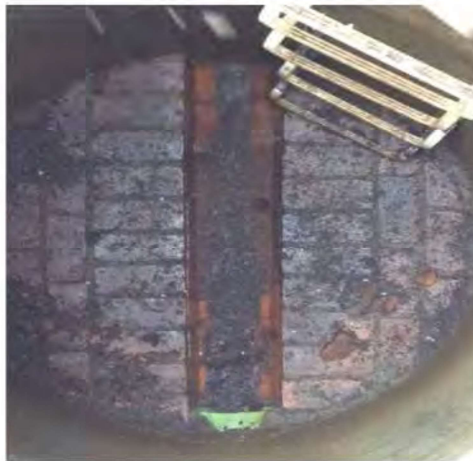
Type of Manhole: SANITARY SEWER (GRAVITY)

Inspection Status: SURFACE INSPECTION: LEVEL 1 (NO MANHOLE ENTRY)

### Manhole Location and Configuration



### Inspection Photos





# Town of Stonington, Connecticut

## Manhole Inspection Form

### Manhole Information

Inspector: BM AND JC

Date: 5/3/2022

Weather: DRY (NO PRECIPITATION DURING SURVEY)

Street: 32 CLIPPER DRIVE

Location: LOCAL RURAL STREETS

GIS MH No: 1-197

Type of Manhole: SANITARY SEWER (GRAVITY)

Inspection Status: SURFACE INSPECTION: LEVEL 1 (NO MANHOLE ENTRY)

Rim to Invert (ft): 8.25

Grade to Rim (in): 0

### Manhole Infiltration

Surcharge: NO

Infiltration: NO

Number of Holes: 3

Metal Riser: YES

### Manhole Characteristics

Location in MH	Mtrl. Code	Infil. Code	Cond. Code	Repair Codes	Comments
Frame/Cover	CAST IRON	STAINS	SOUND	NONE	
Chimney	BRICK	NONE	SOUND	NONE	
Cone	CONCRETE (PRECAST)	NONE	SOUND	NONE	
Wall	CONCRETE (PRECAST)	NONE	SOUND	NONE	
Bench	BRICK	NONE	SOUND	NONE	
Invert/Channel	BRICK	NONE	SOUND	NONE	

### Invert Information

Pipe	Direction	Rim to Invert	Pipe Dia. (in)	Pipe Mtrl. Code	Clock Position*	Comments
Pipe 1	OUT	8.25	8	POLY VINYL CHLORIDE	06:00	
Pipe 2						
Pipe 3						
Pipe 4						
Pipe 5						

Additional  
Comments

\*6:00 is outlet





# Town of Stonington, Connecticut

## Manhole Inspection Form

### Manhole Information

Inspector: BM AK

Date: 9/8/2022

Weather: DRY (NO PRECIPITATION DURING SURVEY)

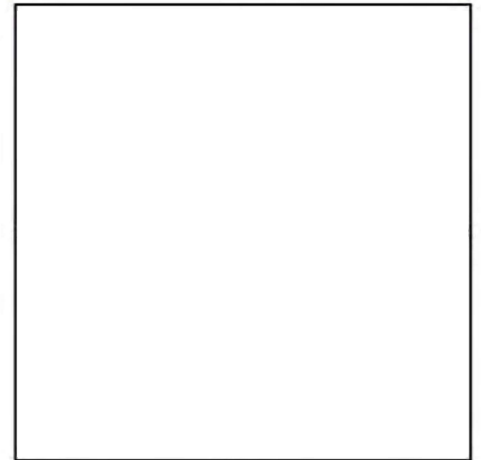
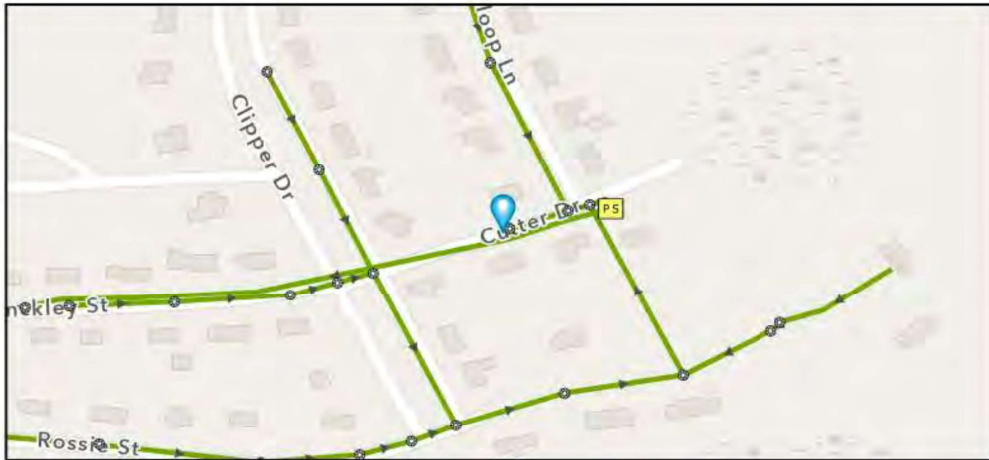
Street: 8 CUTTER DRIVE

GIS MH No: 1-198

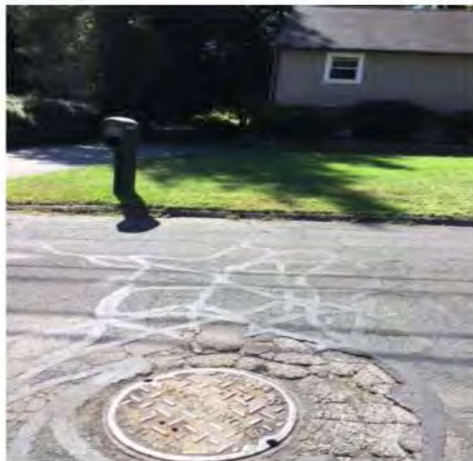
Type of Manhole:

Inspection Status: NO ACCESS

### Manhole Location and Configuration



### Inspection Photos





# Town of Stonington, Connecticut

## Manhole Inspection Form

### Manhole Information

Inspector: BM AK  
Date: 9/8/2022  
Weather: DRY (NO PRECIPITATION DURING SURVEY)  
Street: 8 CUTTER DRIVE  
Location: LOCAL RURAL STREETS

GIS MH No: 1-198  
Type of Manhole:  
Inspection Status: NO ACCESS  
Rim to Invert (ft):  
Grade to Rim (in):

### Manhole Infiltration

Surcharge:  
Infiltration:

Number of Holes:  
Metal Riser:

### Manhole Characteristics

Location in MH	Mtrl. Code	Infil. Code	Cond. Code	Repair Codes	Comments
Frame/Cover					
Chimney					
Cone					
Wall					
Bench					
Invert/Channel					

### Invert Information

Pipe	Direction	Rim to Invert	Pipe Dia. (in)	Pipe Mtrl. Code	Clock Position*	Comments
Pipe 1						
Pipe 2						
Pipe 3						
Pipe 4						
Pipe 5						

Additional  
Comments





CDM  
Smith

## Town of Stonington, Connecticut

### Manhole Inspection Form

#### Manhole Information

Inspector: BM AND JC

Date: 5/4/2022

Weather: LIGHT RAIN

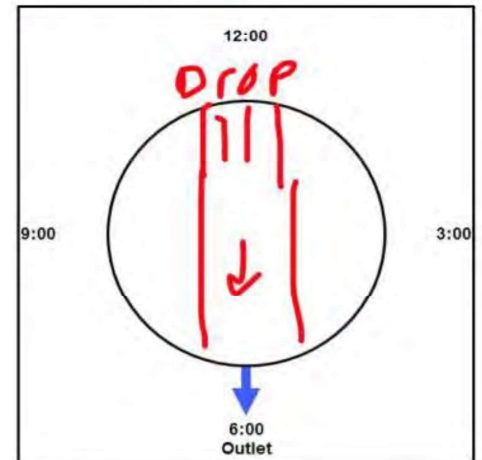
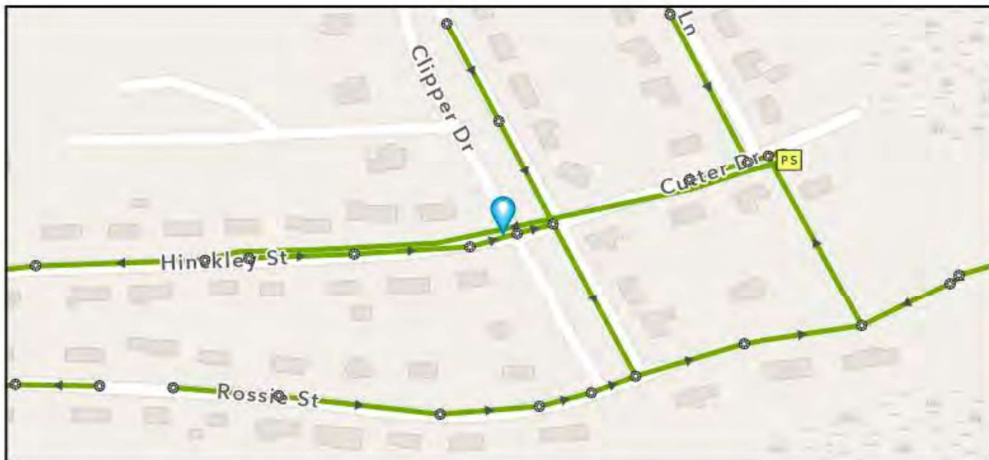
Street: INTERSECTION OF HINCKLEY AND CUTTER

GIS MH No: 1-200

Type of Manhole: SANITARY SEWER (GRAVITY)

Inspection Status: SURFACE INSPECTION: LEVEL 1 (NO MANHOLE ENTRY)

#### Manhole Location and Configuration



#### Inspection Photos





# Town of Stonington, Connecticut

## Manhole Inspection Form

### Manhole Information

Inspector: BM AND JC

Date: 5/4/2022

Weather: LIGHT RAIN

GIS MH No: 1-200

Type of Manhole: SANITARY SEWER (GRAVITY)

Inspection Status: SURFACE INSPECTION: LEVEL 1 (NO MANHOLE ENTRY)

Street: INTERSECTION OF HINCKLEY AND CUTTER

Location: LOCAL RURAL STREETS

Rim to Invert (ft): 9.5

Grade to Rim (in): 0

### Manhole Infiltration

Surcharge: NO

Infiltration: NO

Number of Holes: 0

Metal Riser: NO

### Manhole Characteristics

Location in MH	Mtrl. Code	Infil. Code	Cond. Code	Repair Codes	Comments
Frame/Cover	CAST IRON	STAINS	SOUND	NONE	
Chimney	BRICK	NONE	SOUND	NONE	
Cone	CONCRETE (PRECAST)	NONE	SOUND	NONE	
Wall	CONCRETE (PRECAST)	NONE	SOUND	NONE	
Bench	BRICK	NONE	SOUND	NONE	
Invert/Channel	BRICK	NONE	SOUND	NONE	

### Invert Information

Pipe	Direction	Rim to Invert	Pipe Dia. (in)	Pipe Mtrl. Code	Clock Position*	Comments
Pipe 1	OUT	9.5	8	POLY VINYL CHLORIDE	06:00	
Pipe 2	IN	7.25	8	POLYMER CONCRETE PIPE	12:00	TOP OF DROP
Pipe 3	IN	9.5	8	POLY VINYL CHLORIDE	12:00	BOTTOM OF DROP
Pipe 4						
Pipe 5						

Additional  
Comments

\*6:00 is outlet





CDM  
Smith

## Town of Stonington, Connecticut

### Manhole Inspection Form

#### Manhole Information

Inspector: BM AND JC

Date: 5/4/2022

Weather: DRY (NO PRECIPITATION DURING SURVEY)

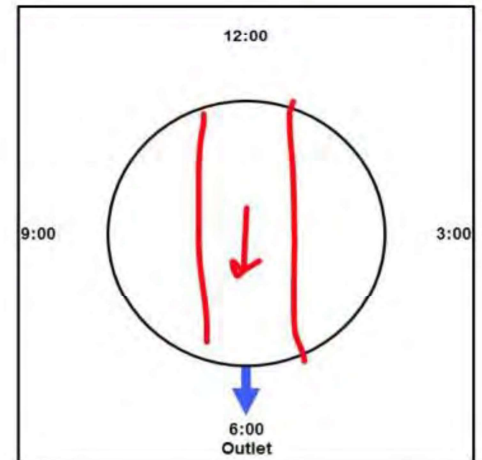
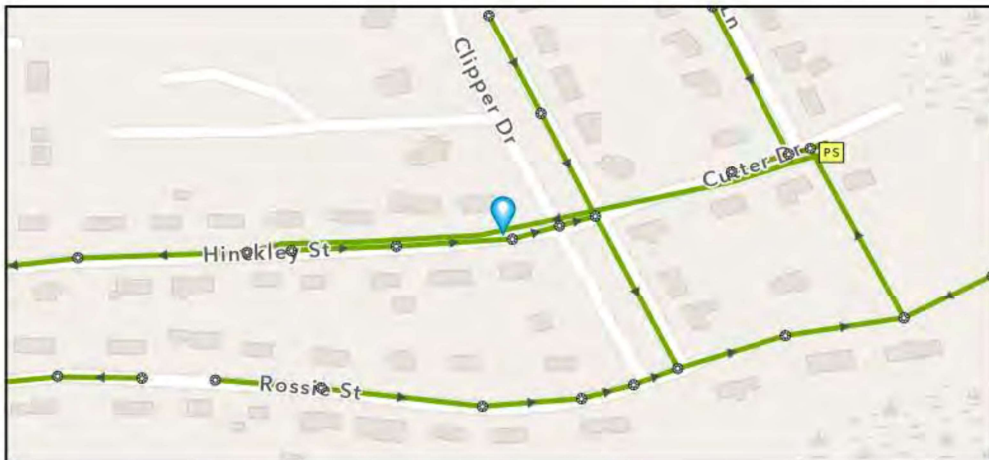
Street: 39 HINCKLEY ST

GIS MH No: 1-201

Type of Manhole: SANITARY SEWER (GRAVITY)

Inspection Status: SURFACE INSPECTION: LEVEL 1 (NO MANHOLE ENTRY)

#### Manhole Location and Configuration



#### Inspection Photos



**Manhole Inspection Form****Manhole Information****Inspector:** BM AND JC**Date:** 5/4/2022**Weather:** DRY (NO PRECIPITATION DURING SURVEY)**GIS MH No:** 1-201**Type of Manhole:** SANITARY SEWER (GRAVITY)**Inspection Status:** SURFACE INSPECTION: LEVEL 1 (NO MANHOLE ENTRY)**Street:** 39 HINCKLEY ST**Location:** LOCAL RURAL STREETS**Rim to Invert (ft):** 9.25**Grade to Rim (in):** 0**Manhole Infiltration****Surcharge:** NO**Number of Holes:** 0**Infiltration:** NO**Metal Riser:** NO**Manhole Characteristics**

Location in MH	Mtrl. Code	Infil. Code	Cond. Code	Repair Codes	Comments
Frame/Cover	CAST IRON	STAINS	SOUND	NONE	
Chimney	OTHER (DESCRIBE IN DETAILS)	NONE	SOUND	NONE	NO CHIMNEY
Cone	CONCRETE (PRECAST)	NONE	SOUND	NONE	
Wall	CONCRETE (PRECAST)	NONE	SOUND	NONE	
Bench	BRICK	NONE	SOUND	NONE	
Invert/Channel	BRICK	NONE	SOUND	NONE	

**Invert Information**

Pipe	Direction	Rim to Invert	Pipe Dia. (in)	Pipe Mtrl. Code	Clock Position*	Comments
Pipe 1	OUT	9.25	8	POLY VINYL CHLORIDE	06:00	
Pipe 2	IN	9.25	8	POLY VINYL CHLORIDE	12:00	
Pipe 3						
Pipe 4						
Pipe 5						

**Additional  
Comments**





CDM  
Smith

## Town of Stonington, Connecticut

### Manhole Inspection Form

#### Manhole Information

Inspector: BM AND JC

Date: 5/4/2022

Weather: LIGHT RAIN

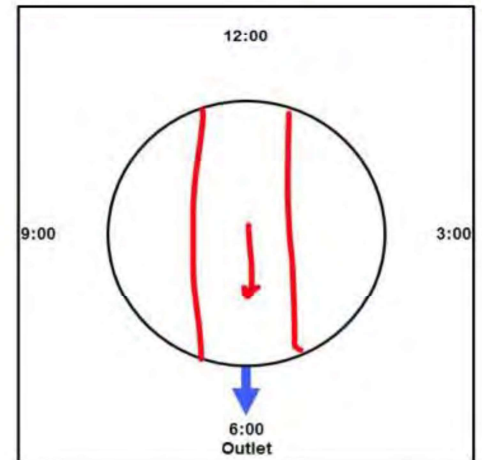
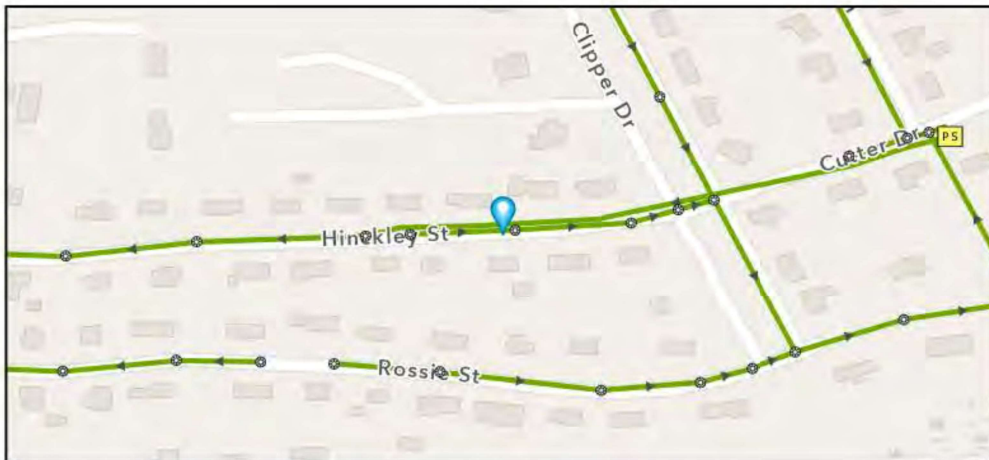
Street: 37 HINCKLEY STREET

GIS MH No: 1-202

Type of Manhole: SANITARY SEWER (GRAVITY)

Inspection Status: SURFACE INSPECTION: LEVEL 1 (NO MANHOLE ENTRY)

#### Manhole Location and Configuration



#### Inspection Photos



**Manhole Inspection Form****Manhole Information****Inspector:** BM AND JC**Date:** 5/4/2022**Weather:** LIGHT RAIN**GIS MH No:** 1-202**Type of Manhole:** SANITARY SEWER (GRAVITY)**Inspection Status:** SURFACE INSPECTION: LEVEL 1 (NO MANHOLE ENTRY)**Street:** 37 HINCKLEY STREET**Location:** LOCAL RURAL STREETS**Rim to Invert (ft):** 8.5**Grade to Rim (in):** 0**Manhole Infiltration****Surcharge:** NO**Number of Holes:** 0**Infiltration:** NO**Metal Riser:** NO**Manhole Characteristics**

Location in MH	Mtrl. Code	Infil. Code	Cond. Code	Repair Codes	Comments
Frame/Cover	CAST IRON	STAINS	SOUND	NONE	
Chimney	BRICK	NONE	SOUND	NONE	
Cone	CONCRETE (PRECAST)	NONE	SOUND	NONE	
Wall	CONCRETE (PRECAST)	NONE	SOUND	NONE	
Bench	BRICK	NONE	SOUND	NONE	
Invert/Channel	BRICK	NONE	SOUND	NONE	

**Invert Information**

Pipe	Direction	Rim to Invert	Pipe Dia. (in)	Pipe Mtrl. Code	Clock Position*	Comments
Pipe 1	OUT	8.5	8	POLY VINYL CHLORIDE	06:00	
Pipe 2	IN	8.5	8	POLY VINYL CHLORIDE	12:00	
Pipe 3						
Pipe 4						
Pipe 5						

**Additional  
Comments**





CDM  
Smith

# Town of Stonington, Connecticut

## Manhole Inspection Form

### Manhole Information

Inspector: BM/JC

Date: 5/18/2022

Weather: DRY (NO PRECIPITATION DURING SURVEY)

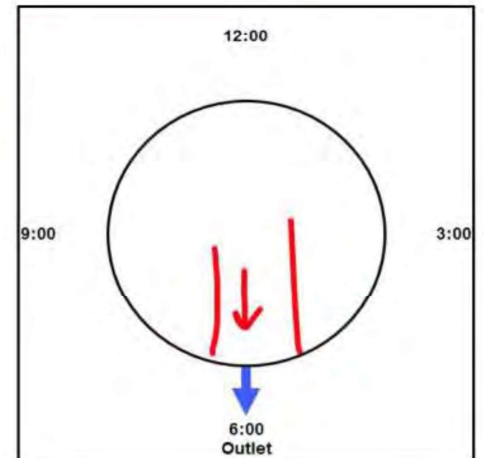
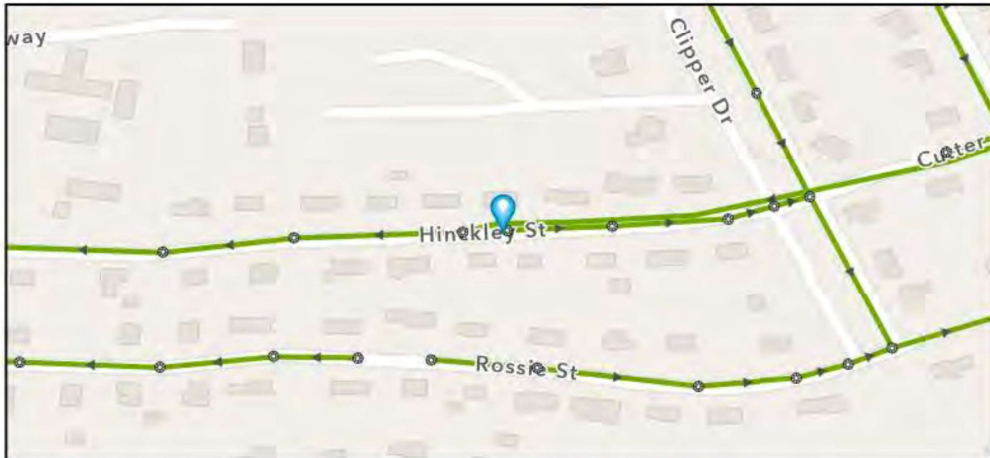
Street: 33 HINCKLEY

GIS MH No: 1-203

Type of Manhole: SANITARY SEWER (GRAVITY)

Inspection Status: SURFACE INSPECTION: LEVEL 1 (NO MANHOLE ENTRY)

### Manhole Location and Configuration



### Inspection Photos



**Manhole Inspection Form****Manhole Information**

**Inspector:** BM/JC **GIS MH No:** 1-203  
**Date:** 5/18/2022 **Type of Manhole:** SANITARY SEWER (GRAVITY)  
**Weather:** DRY (NO PRECIPITATION DURING SURVEY) **Inspection Status:** SURFACE INSPECTION; LEVEL 1 (NO MANHOLE ENTRY)  
**Street:** 33 HINCKLEY **Rim to Invert (ft):** 8.25  
**Location:** LOCAL RURAL STREETS **Grade to Rim (in):** 0

**Manhole Infiltration**

**Surcharge:** NO **Number of Holes:** 0  
**Infiltration:** YES **Metal Riser:** NO

**Manhole Characteristics**

Location in MH	Mtrl. Code	Infil. Code	Cond. Code	Repair Codes	Comments
Frame/Cover	CAST IRON	NONE	SOUND	NONE	
Chimney	OTHER (DESCRIBE IN DETAILS)	NONE	SOUND	NONE	NO CHIMNEY
Cone	CONCRETE (PRECAST)	NONE	SOUND	NONE	
Wall	CONCRETE (PRECAST)	STAINS	DEFECTIVE	LINE_MANHOLE	
Bench	BRICK	NONE	SOUND	NONE	
Invert/Channel	BRICK	NONE	SOUND	NONE	

**Invert Information**

Pipe	Direction	Rim to Invert	Pipe Dia. (in)	Pipe Mtrl. Code	Clock Position*	Comments
Pipe 1	OUT	8.25	8	POLY VINYL CHLORIDE	06:00	
Pipe 2						
Pipe 3						
Pipe 4						
Pipe 5						

Additional  
Comments





CDM  
Smith

## Town of Stonington, Connecticut

### Manhole Inspection Form

#### Manhole Information

Inspector: BH AND TT

Date: 4/28/2022

Weather: DRY (NO PRECIPITATION DURING SURVEY)

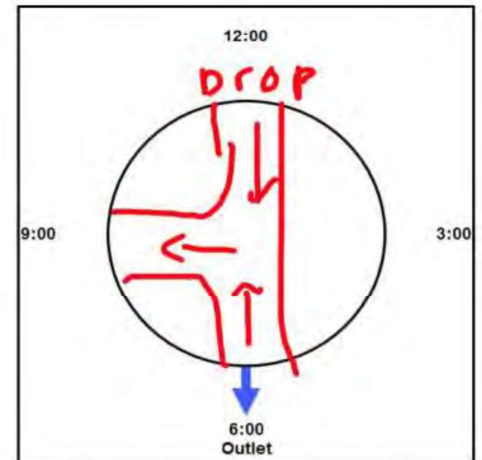
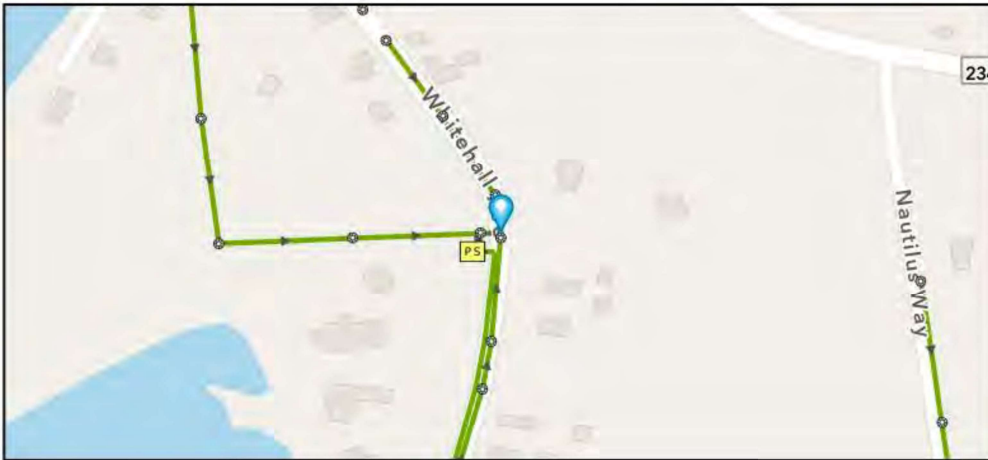
Street: ROUTE 27

GIS MH No: 1-204

Type of Manhole: SANITARY SEWER (GRAVITY)

Inspection Status: SURFACE INSPECTION: LEVEL 1 (NO MANHOLE ENTRY)

#### Manhole Location and Configuration



#### Inspection Photos



**Manhole Inspection Form****Manhole Information****Inspector:** BH AND TT**Date:** 4/28/2022**Weather:** DRY (NO PRECIPITATION DURING SURVEY)**Street:** ROUTE 27**Location:** PRIMARY ARTERIAL ROADS**GIS MH No:** 1-204**Type of Manhole:** SANITARY SEWER (GRAVITY)**Inspection Status:** SURFACE INSPECTION: LEVEL 1 (NO MANHOLE ENTRY)**Rim to Invert (ft):** 12.33**Grade to Rim (in):** -1**Manhole Infiltration****Surcharge:** NO**Infiltration:** YES**Number of Holes:** 0**Metal Riser:** NO**Manhole Characteristics**

Location in MH	Mtrl. Code	Infil. Code	Cond. Code	Repair Codes	Comments
Frame/Cover	CAST IRON	WEEPER	CORRODED	REPLACE FRAME AND COVER	
Chimney	CONCRETE BLOCK	STAINS	DEFECTIVE	RESET EXISTING FRAME AND CHIMNEY, ADD RISER RING TO FRAME	
Cone	CONCRETE (PRECAST)	NONE	SOUND	NONE	
Wall	CONCRETE (PRECAST)	NONE	SOUND	NONE	
Bench	BRICK	NONE	SOUND	NONE	
Invert/Channel	BRICK	NONE	SOUND	NONE	

**Invert Information**

Pipe	Direction	Rim to Invert	Pipe Dia. (in)	Pipe Mtrl. Code	Clock Position*	Comments
Pipe 1	OUT	12.33	8	REINFORCED CONCRETE PIPE	06:00	
Pipe 2	IN	8.25	8	POLY VINYL CHLORIDE	09:00	TOP OF DROP
Pipe 3	IN	12.33	8	POLY VINYL CHLORIDE	09:00	BOTTOM OF DROP
Pipe 4	IN	12.33	8	POLY VINYL CHLORIDE	03:00	
Pipe 5						

**Additional  
Comments**





CDM  
Smith

## Town of Stonington, Connecticut

### Manhole Inspection Form

#### Manhole Information

Inspector: BH AND TT

Date: 4/28/2022

Weather: DRY (NO PRECIPITATION DURING SURVEY)

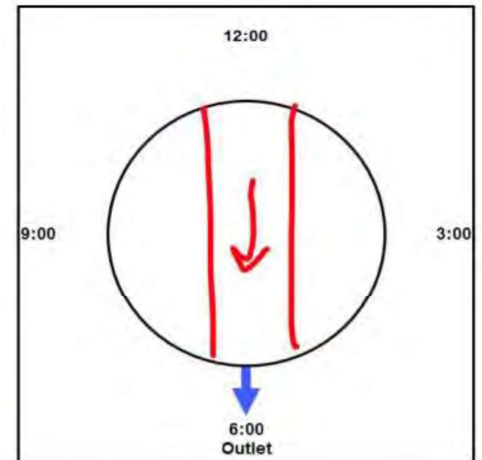
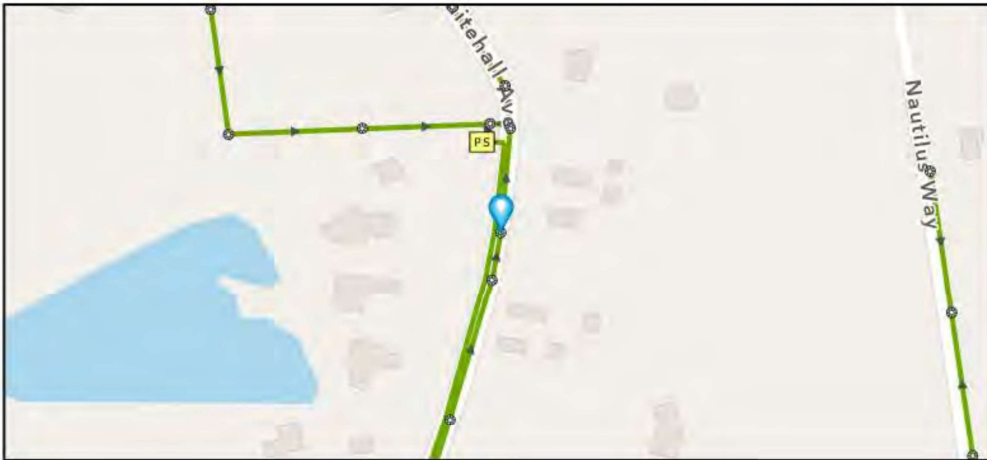
Street: ROUTE 27

GIS MH No: 1-205

Type of Manhole: SANITARY SEWER (GRAVITY)

Inspection Status: SURFACE INSPECTION: LEVEL 1 (NO MANHOLE ENTRY)

#### Manhole Location and Configuration



#### Inspection Photos



**Manhole Inspection Form****Manhole Information****Inspector:** BH AND TT**Date:** 4/28/2022**Weather:** DRY (NO PRECIPITATION DURING SURVEY)**Street:** ROUTE 27**Location:** PRIMARY ARTERIAL ROADS**GIS MH No:** 1-205**Type of Manhole:** SANITARY SEWER (GRAVITY)**Inspection Status:** SURFACE INSPECTION: LEVEL 1 (NO MANHOLE ENTRY)**Rim to Invert (ft):** 8.25**Grade to Rim (in):** 0**Manhole Infiltration****Surcharge:** NO**Number of Holes:** 0**Infiltration:** NO**Metal Riser:** YES**Manhole Characteristics**

Location in MH	Mtrl. Code	Infil. Code	Cond. Code	Repair Codes	Comments
Frame/Cover	CAST IRON	NONE	SOUND	NONE	
Chimney	CONCRETE (PRECAST)	NONE	SOUND	NONE	
Cone	OTHER (DESCRIBE IN DETAILS)	NONE	SOUND	NONE	NO CONE
Wall	CONCRETE (PRECAST)	NONE	SOUND	NONE	
Bench	BRICK	NONE	SOUND	NONE	
Invert/Channel	BRICK	NONE	SOUND	NONE	

**Invert Information**

Pipe	Direction	Rim to Invert	Pipe Dia. (in)	Pipe Mtrl. Code	Clock Position*	Comments
Pipe 1	OUT	8.25	8	POLY VINYL CHLORIDE	06:00	
Pipe 2	IN	8.25	8	POLY VINYL CHLORIDE	12:00	
Pipe 3						
Pipe 4						
Pipe 5						

**Additional  
Comments**





CDM  
Smith

# Town of Stonington, Connecticut

## Manhole Inspection Form

### Manhole Information

Inspector: BH AND TT

Date: 4/28/2022

Weather: DRY (NO PRECIPITATION DURING SURVEY)

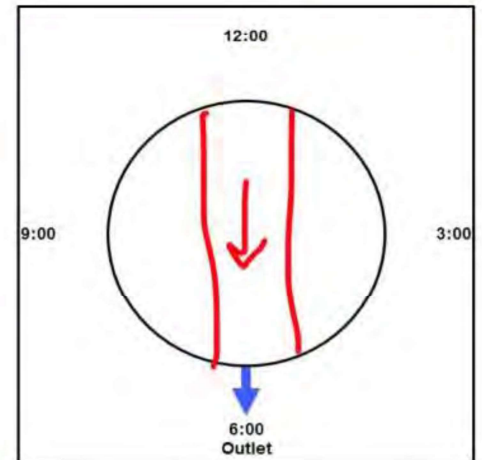
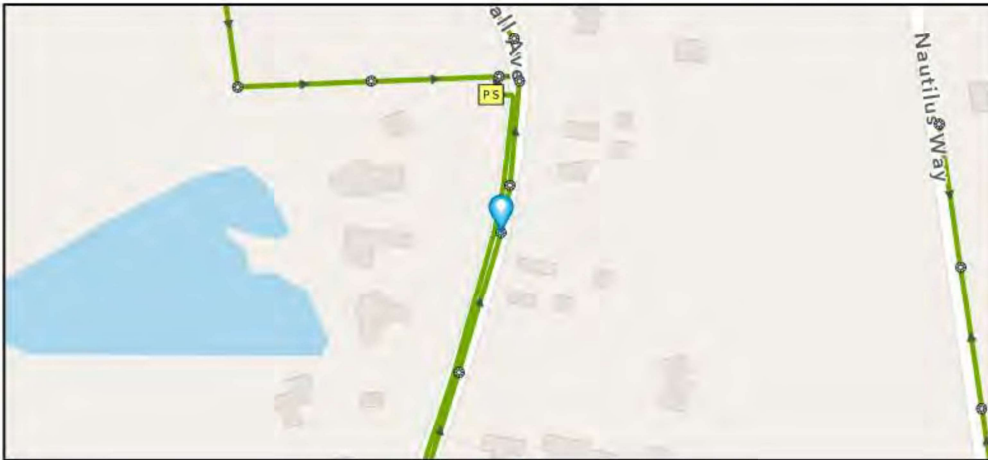
Street: ROUTE 27

GIS MH No: 1-206

Type of Manhole: SANITARY SEWER (GRAVITY)

Inspection Status: SURFACE INSPECTION: LEVEL 1 (NO MANHOLE ENTRY)

### Manhole Location and Configuration



### Inspection Photos



**Manhole Inspection Form****Manhole Information****Inspector:** BH AND TT**Date:** 4/28/2022**Weather:** DRY (NO PRECIPITATION DURING SURVEY)**Street:** ROUTE 27**Location:** PRIMARY ARTERIAL ROADS**GIS MH No:** 1-206**Type of Manhole:** SANITARY SEWER (GRAVITY)**Inspection Status:** SURFACE INSPECTION: LEVEL 1 (NO MANHOLE ENTRY)**Rim to Invert (ft):** 7.5**Grade to Rim (in):** 0**Manhole Infiltration****Surcharge:** NO**Number of Holes:** 0**Infiltration:** NO**Metal Riser:** YES**Manhole Characteristics**

Location in MH	Mtrl. Code	Infil. Code	Cond. Code	Repair Codes	Comments
Frame/Cover	CAST IRON	NONE	SOUND	NONE	
Chimney	CONCRETE (PRECAST)	NONE	SOUND	NONE	
Cone	OTHER (DESCRIBE IN DETAILS)	NONE	SOUND	NONE	NO CONE
Wall	CONCRETE (PRECAST)	NONE	SOUND	NONE	
Bench	BRICK	NONE	SOUND	NONE	
Invert/Channel	BRICK	NONE	SOUND	NONE	

**Invert Information**

Pipe	Direction	Rim to Invert	Pipe Dia. (in)	Pipe Mtrl. Code	Clock Position*	Comments
Pipe 1	OUT	7.5	8	POLY VINYL CHLORIDE	06:00	
Pipe 2	IN	7.5	8	POLY VINYL CHLORIDE	12:00	
Pipe 3						
Pipe 4						
Pipe 5						

**Additional  
Comments**





Manhole Inspection Form

Manhole Information

Inspector: BH AND TT

Date: 4/28/2022

Weather: DRY (NO PRECIPITATION DURING SURVEY)

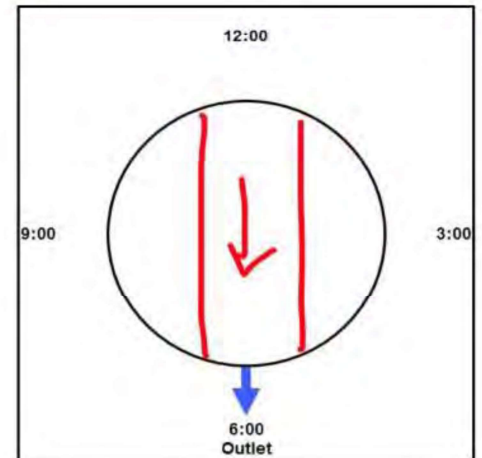
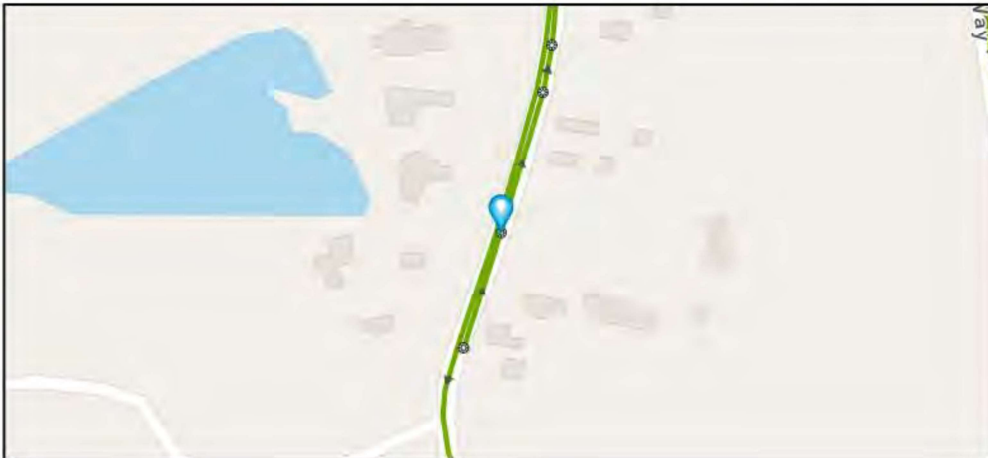
Street: ROUTE 27

GIS MH No: 1-207

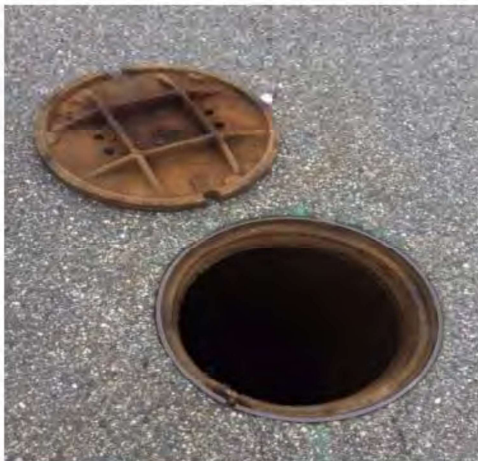
Type of Manhole: SANITARY SEWER (GRAVITY)

Inspection Status: SURFACE INSPECTION: LEVEL 1 (NO MANHOLE ENTRY)

Manhole Location and Configuration



Inspection Photos





# Town of Stonington, Connecticut

## Manhole Inspection Form

### Manhole Information

Inspector: BH AND TT

Date: 4/28/2022

Weather: DRY (NO PRECIPITATION DURING SURVEY)

Street: ROUTE 27

Location: PRIMARY ARTERIAL ROADS

GIS MH No: 1-207

Type of Manhole: SANITARY SEWER (GRAVITY)

Inspection Status: SURFACE INSPECTION: LEVEL 1 (NO MANHOLE ENTRY)

Rim to Invert (ft): 9.25

Grade to Rim (in): 0

### Manhole Infiltration

Surcharge: NO

Infiltration: YES

Number of Holes: 4

Metal Riser: YES

### Manhole Characteristics

Location in MH	Mtrl. Code	Infil. Code	Cond. Code	Repair Codes	Comments
Frame/Cover	CAST IRON	NONE	SOUND	NONE	
Chimney	OTHER (DESCRIBE IN DETAILS)	NONE	SOUND	NONE	NO CHIMNEY.
Cone	CONCRETE (PRECAST)	STAINS	DEFECTIVE	OTHER	GROUT LOCATION ON CONE WHERE INFILTRATION IS COMING IN
Wall	CONCRETE (PRECAST)	NONE	SOUND	NONE	
Bench	BRICK	NONE	SOUND	NONE	
Invert/Channel	BRICK	NONE	SOUND	NONE	

### Invert Information

Pipe	Direction	Rim to Invert	Pipe Dia. (in)	Pipe Mtrl. Code	Clock Position*	Comments
Pipe 1	OUT	9.25	8	POLY VINYL CHLORIDE	06:00	
Pipe 2	IN	9.25	8	POLY VINYL CHLORIDE	12:00	
Pipe 3						
Pipe 4						
Pipe 5						

Additional  
Comments

\*6:00 is outlet





Manhole Inspection Form

Manhole Information

Inspector: BH AND TT

Date: 4/28/2022

Weather: DRY (NO PRECIPITATION DURING SURVEY)

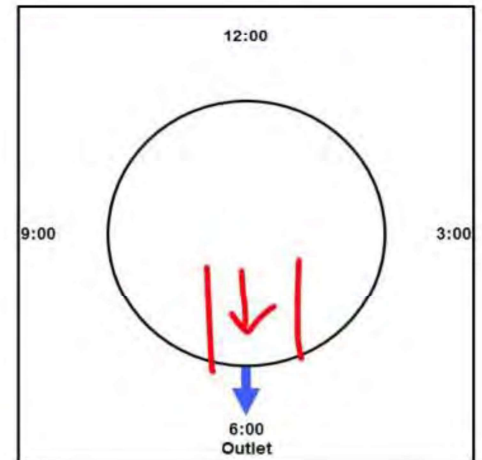
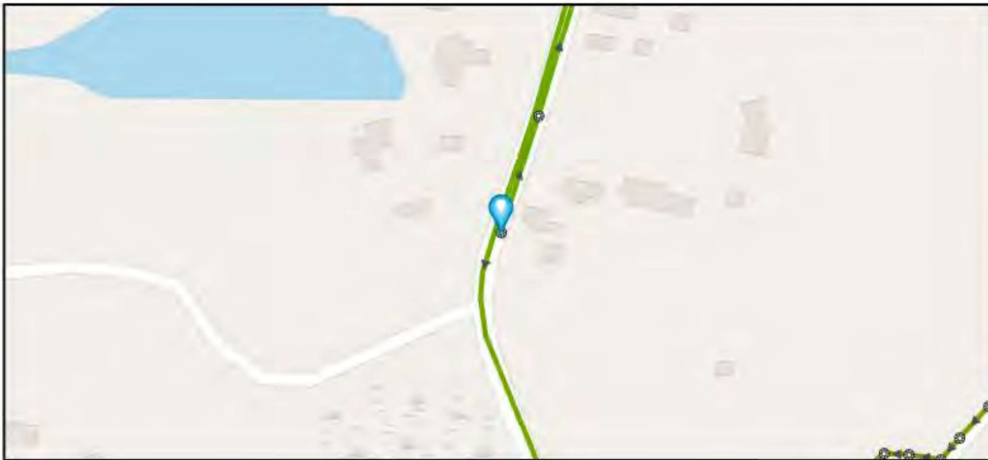
Street: ROUTE 27

GIS MH No: 1-208

Type of Manhole: SANITARY SEWER (GRAVITY)

Inspection Status: SURFACE INSPECTION: LEVEL 1 (NO MANHOLE ENTRY)

Manhole Location and Configuration



Inspection Photos



**Manhole Inspection Form****Manhole Information****Inspector:** BH AND TT**Date:** 4/28/2022**Weather:** DRY (NO PRECIPITATION DURING SURVEY)**Street:** ROUTE 27**Location:** PRIMARY ARTERIAL ROADS**GIS MH No:** 1-208**Type of Manhole:** SANITARY SEWER (GRAVITY)**Inspection Status:** SURFACE INSPECTION: LEVEL 1 (NO MANHOLE ENTRY)**Rim to Invert (ft):** 7.5**Grade to Rim (in):** 0**Manhole Infiltration****Surcharge:** NO**Infiltration:** YES**Number of Holes:** 0**Metal Riser:** YES**Manhole Characteristics**

Location in MH	Mtrl. Code	Infil. Code	Cond. Code	Repair Codes	Comments
Frame/Cover	CAST IRON	STAINS	SOUND	NONE	
Chimney	OTHER (DESCRIBE IN DETAILS)	NONE	SOUND	NONE	NO CHIMNEY
Cone	CONCRETE (PRECAST)	NONE	SOUND	NONE	
Wall	CONCRETE (PRECAST)	STAINS	DEFECTIVE	LINE_MANHOLE	
Bench	BRICK	NONE	SOUND	NONE	
Invert/Channel	BRICK	NONE	SOUND	NONE	

**Invert Information**

Pipe	Direction	Rim to Invert	Pipe Dia. (in)	Pipe Mtrl. Code	Clock Position*	Comments
Pipe 1	OUT	7.5	8	POLY VINYL CHLORIDE	06:00	
Pipe 2						
Pipe 3						
Pipe 4						
Pipe 5						

**Additional  
Comments**





CDM  
Smith

# Town of Stonington, Connecticut

## Manhole Inspection Form

### Manhole Information

Inspector: BH AND TT

Date: 4/28/2022

Weather: DRY (NO PRECIPITATION DURING SURVEY)

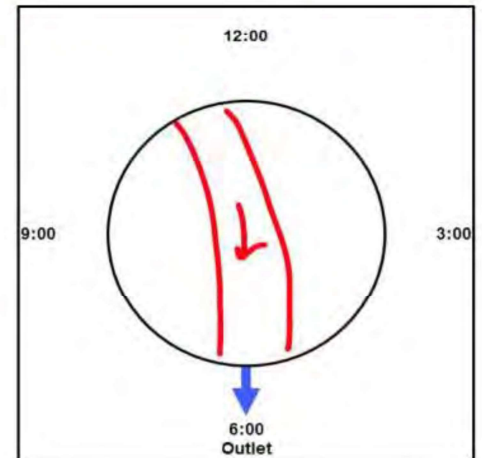
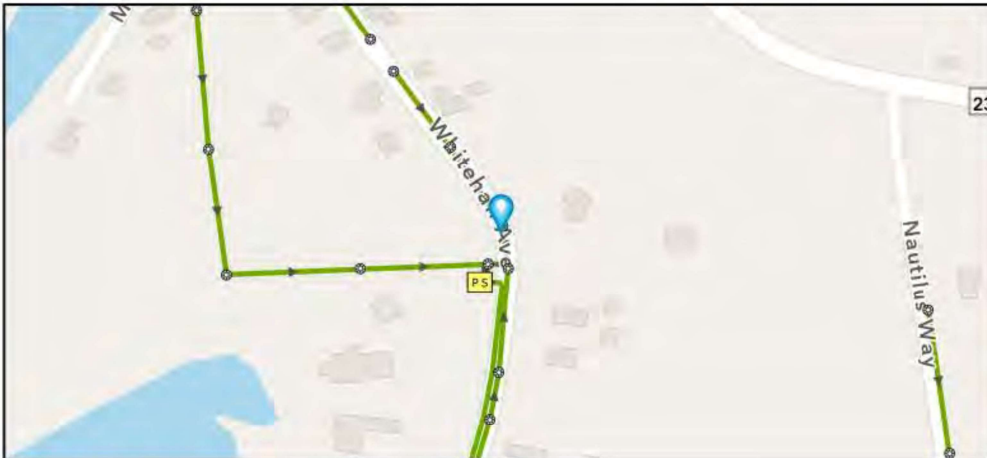
Street: ROUTE 27

GIS MH No: 1-209

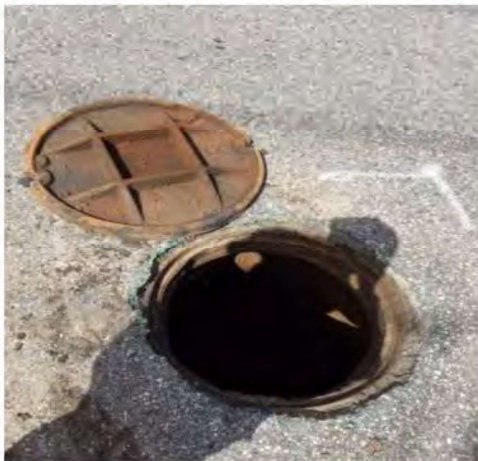
Type of Manhole: SANITARY SEWER (GRAVITY)

Inspection Status: SURFACE INSPECTION: LEVEL 1 (NO MANHOLE ENTRY)

### Manhole Location and Configuration



### Inspection Photos



**Manhole Inspection Form****Manhole Information****Inspector:** BH AND TT**Date:** 4/28/2022**Weather:** DRY (NO PRECIPITATION DURING SURVEY)**Street:** ROUTE 27**Location:** PRIMARY ARTERIAL ROADS**GIS MH No:** 1-209**Type of Manhole:** SANITARY SEWER (GRAVITY)**Inspection Status:** SURFACE INSPECTION: LEVEL 1 (NO MANHOLE ENTRY)**Rim to Invert (ft):** 8**Grade to Rim (in):** -3**Manhole Infiltration****Surcharge:** NO**Infiltration:** NO**Number of Holes:** 0**Metal Riser:** YES**Manhole Characteristics**

Location in MH	Mtrl. Code	Infil. Code	Cond. Code	Repair Codes	Comments
Frame/Cover	CAST IRON	NONE	CORRODED	ADD RISER RING TO FRAME AND CHIMNEY	
Chimney	BRICK	NONE	SOUND	REPLACE FRAME AND NONE	
Cone	CONCRETE (PRECAST)	NONE	SOUND	NONE	
Wall	CONCRETE (PRECAST)	NONE	SOUND	NONE	
Bench	BRICK	NONE	SOUND	NONE	
Invert/Channel	BRICK	NONE	SOUND	NONE	

**Invert Information**

Pipe	Direction	Rim to Invert	Pipe Dia. (in)	Pipe Mtrl. Code	Clock Position*	Comments
Pipe 1	OUT	8	8	REINFORCED CONCRETE PIPE	06:00	
Pipe 2	IN	8	8	REINFORCED CONCRETE PIPE	12:00	
Pipe 3						
Pipe 4						
Pipe 5						

**Additional  
Comments**