



CDM
Smith

Town of Stonington, Connecticut

Manhole Inspection Form

Manhole Information

Inspector: BH AND TT

Date: 4/28/2022

Weather: DRY (NO PRECIPITATION DURING SURVEY)

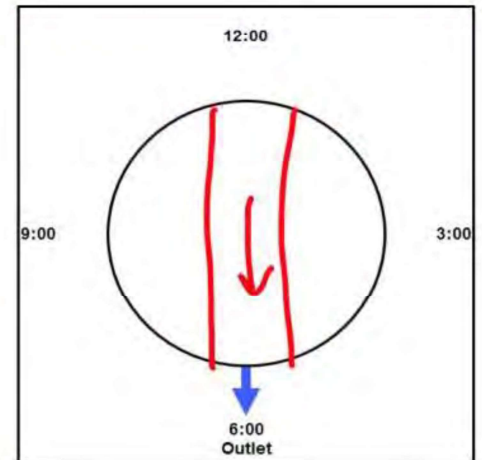
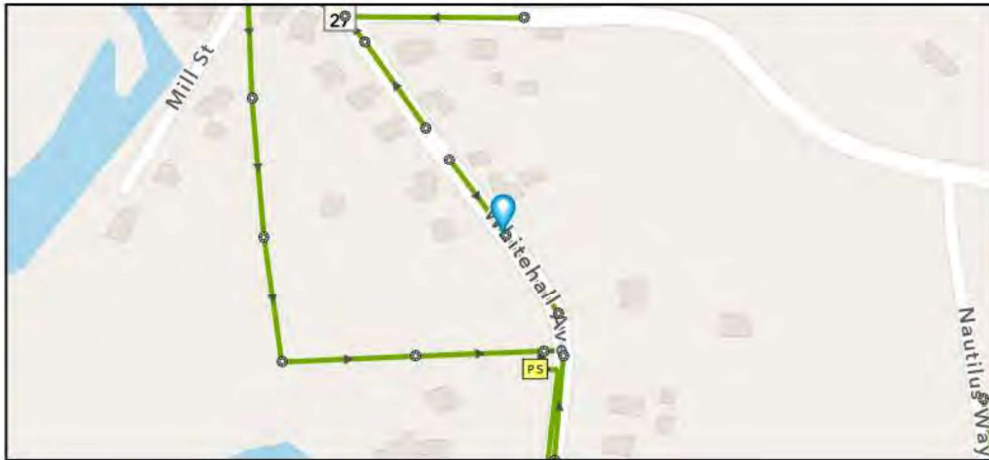
Street: ROUTE 27

GIS MH No: 1-210

Type of Manhole: SANITARY SEWER (GRAVITY)

Inspection Status: SURFACE INSPECTION: LEVEL 1 (NO MANHOLE ENTRY)

Manhole Location and Configuration



Inspection Photos



**Manhole Inspection Form****Manhole Information****Inspector:** BH AND TT**Date:** 4/28/2022**Weather:** DRY (NO PRECIPITATION DURING SURVEY)**Street:** ROUTE 27**Location:** PRIMARY ARTERIAL ROADS**GIS MH No:** 1-210**Type of Manhole:** SANITARY SEWER (GRAVITY)**Inspection Status:** SURFACE INSPECTION: LEVEL 1 (NO MANHOLE ENTRY)**Rim to Invert (ft):** 8.25**Grade to Rim (in):** 0**Manhole Infiltration****Surcharge:** NO**Infiltration:** YES**Number of Holes:** 0**Metal Riser:** YES**Manhole Characteristics**

Location in MH	Mtrl. Code	Infil. Code	Cond. Code	Repair Codes	Comments
Frame/Cover	CAST IRON	NONE	SOUND	NONE	
Chimney	BRICK	NONE	SOUND	NONE	
Cone	CONCRETE (PRECAST)	NONE	SOUND	NONE	
Wall	CONCRETE (PRECAST)	STAINS	SOUND	LINE_MANHOLE	
Bench	BRICK	NONE	SOUND	NONE	
Invert/Channel	BRICK	NONE	SOUND	NONE	

Invert Information

Pipe	Direction	Rim to Invert	Pipe Dia. (in)	Pipe Mtrl. Code	Clock Position*	Comments
Pipe 1	OUT	8.25	8	POLY VINYL CHLORIDE	06:00	
Pipe 2	IN	8.25	8	POLY VINYL CHLORIDE	12:00	
Pipe 3						
Pipe 4						
Pipe 5						

**Additional
Comments**



CDM
Smith

Town of Stonington, Connecticut

Manhole Inspection Form

Manhole Information

Inspector: BH AND TT

Date: 4/28/2022

Weather: DRY (NO PRECIPITATION DURING SURVEY)

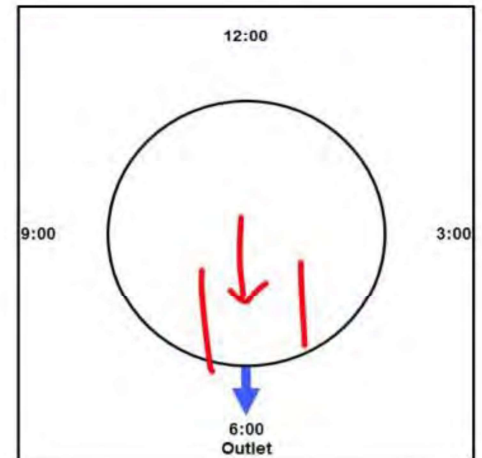
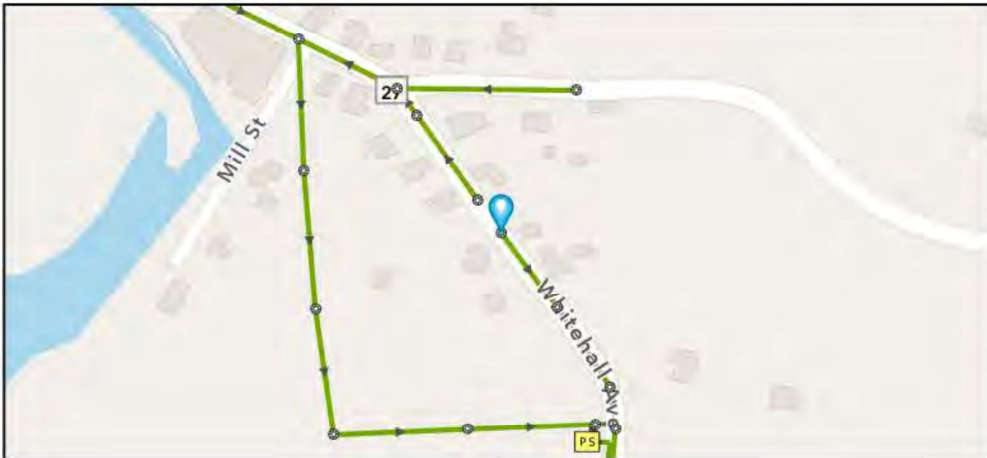
Street: ROUTE 27

GIS MH No: 1-211

Type of Manhole: SANITARY SEWER (GRAVITY)

Inspection Status: SURFACE INSPECTION: LEVEL 1 (NO MANHOLE ENTRY)

Manhole Location and Configuration



Inspection Photos



**Manhole Inspection Form****Manhole Information****Inspector:** BH AND TT**Date:** 4/28/2022**Weather:** DRY (NO PRECIPITATION DURING SURVEY)**Street:** ROUTE 27**Location:** PRIMARY ARTERIAL ROADS**GIS MH No:** 1-211**Type of Manhole:** SANITARY SEWER (GRAVITY)**Inspection Status:** SURFACE INSPECTION: LEVEL 1 (NO MANHOLE ENTRY)**Rim to Invert (ft):** 6.5**Grade to Rim (in):** 0**Manhole Infiltration****Surcharge:** NO**Infiltration:** NO**Number of Holes:** 4**Metal Riser:** YES**Manhole Characteristics**

Location in MH	Mtrl. Code	Infil. Code	Cond. Code	Repair Codes	Comments
Frame/Cover	CAST IRON	NONE	SOUND	NONE	
Chimney	OTHER (DESCRIBE IN DETAILS)	NONE	SOUND	NONE	NO CHIMNEY
Cone	CONCRETE (PRECAST)	NONE	SOUND	NONE	
Wall	CONCRETE (PRECAST)	NONE	SOUND	NONE	
Bench	BRICK	NONE	SOUND	NONE	
Invert/Channel	BRICK	NONE	SOUND	NONE	

Invert Information

Pipe	Direction	Rim to Invert	Pipe Dia. (in)	Pipe Mtrl. Code	Clock Position*	Comments
Pipe 1	OUT	6.5	8	POLY VINYL CHLORIDE	06:00	
Pipe 2						
Pipe 3						
Pipe 4						
Pipe 5						

**Additional
Comments**



CDM
Smith

Town of Stonington, Connecticut

Manhole Inspection Form

Manhole Information

Inspector: BM AK

Date: 9/8/2022

Weather: DRY (NO PRECIPITATION DURING SURVEY)

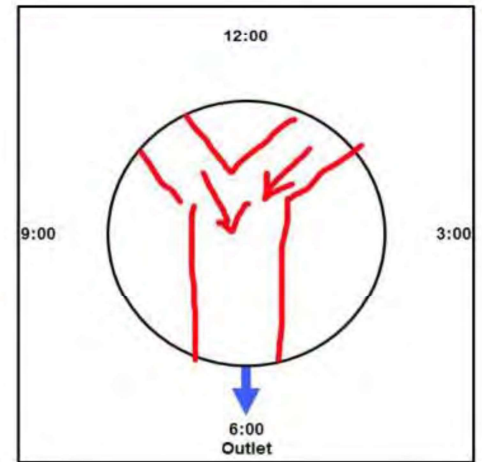
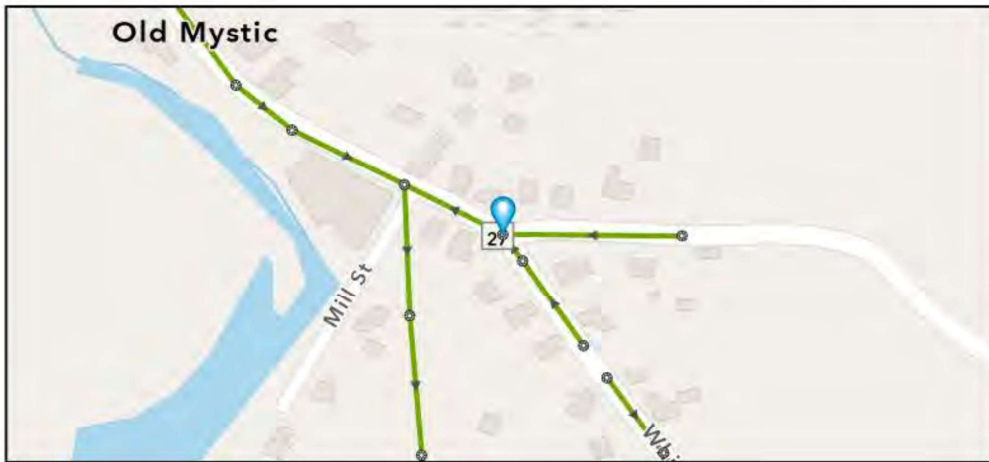
Street: ROUTE 27

GIS MH No: 1-212

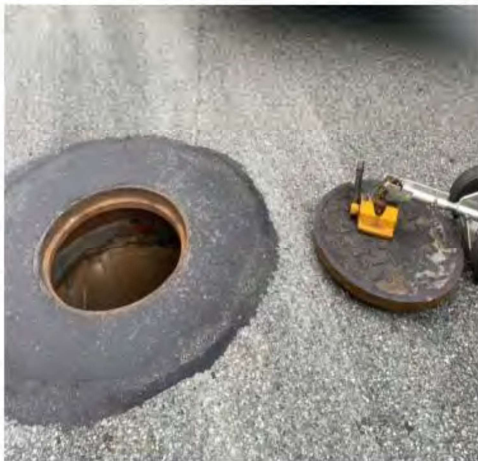
Type of Manhole: SANITARY SEWER (GRAVITY)

Inspection Status: SURFACE INSPECTION: LEVEL 1 (NO MANHOLE ENTRY)

Manhole Location and Configuration



Inspection Photos





Town of Stonington, Connecticut

Manhole Inspection Form

Manhole Information

Inspector: BM AK
Date: 9/8/2022
Weather: DRY (NO PRECIPITATION DURING SURVEY)
Street: ROUTE 27
Location: PRIMARY ARTERIAL ROADS

GIS MH No: 1-212
Type of Manhole: SANITARY SEWER (GRAVITY)
Inspection Status: SURFACE INSPECTION: LEVEL 1 (NO MANHOLE ENTRY)
Rim to Invert (ft): 9.5
Grade to Rim (in): 0

Manhole Infiltration

Surcharge: NO
Infiltration: NO
Number of Holes: 0
Metal Riser: NO

Manhole Characteristics

Location in MH	Mtrl. Code	Infil. Code	Cond. Code	Repair Codes	Comments
Frame/Cover	CAST IRON	NONE	CORRODED	REPLACE FRAME AND COVER	
Chimney	BRICK	NONE	SOUND	NONE	
Cone	CONCRETE (PRECAST)	NONE	SOUND	NONE	
Wall	CONCRETE (PRECAST)	NONE	SOUND	NONE	
Bench	BRICK	NONE	SOUND	NONE	
Invert/Channel	BRICK	NONE	SOUND	NONE	

Invert Information

Pipe	Direction	Rim to Invert	Pipe Dia. (in)	Pipe Mtrl. Code	Clock Position*	Comments
Pipe 1	OUT	9.5	8	REINFORCED CONCRETE PIPE	06:00	
Pipe 2	IN	9	8	POLY VINYL CHLORIDE	11:00	
Pipe 3	IN	9	8	POLY VINYL CHLORIDE	01:00	
Pipe 4						
Pipe 5						

Additional
Comments

*6:00 is outlet



**CDM
Smith**

Town of Stonington, Connecticut

Manhole Inspection Form

Manhole Information

Inspector: BM AK

Date: 9/8/2022

Weather: DRY (NO PRECIPITATION DURING SURVEY)

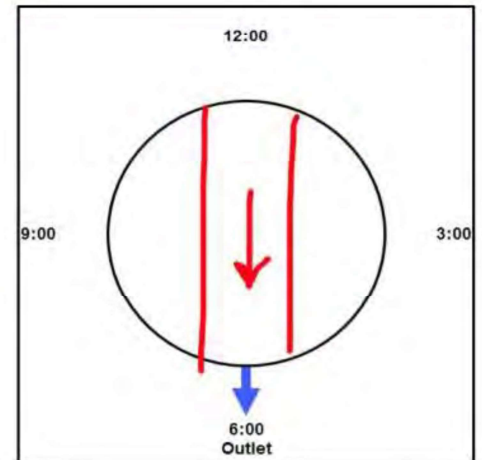
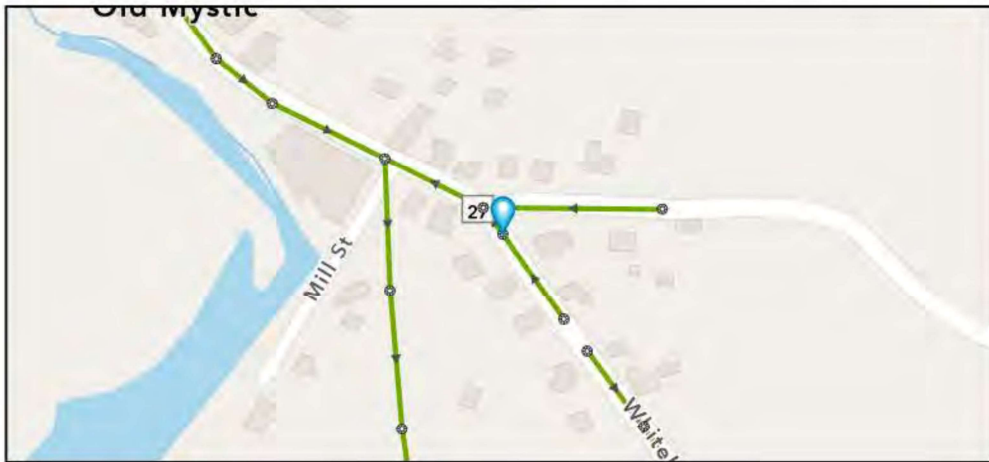
Street: ROUTE 27

GIS MH No: 1-213

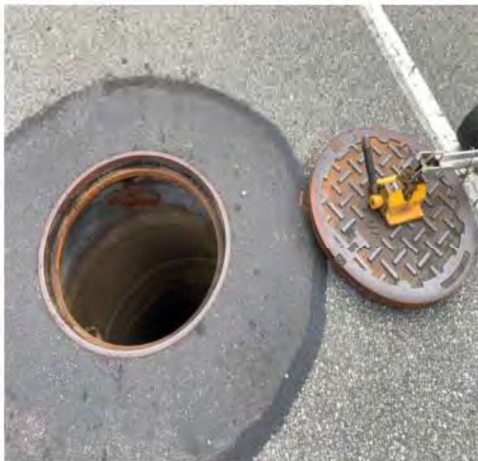
Type of Manhole: SANITARY SEWER (GRAVITY)

Inspection Status: SURFACE INSPECTION: LEVEL 1 (NO MANHOLE ENTRY)

Manhole Location and Configuration



Inspection Photos





Town of Stonington, Connecticut

Manhole Inspection Form

Manhole Information

Inspector: BM AK
Date: 9/8/2022
Weather: DRY (NO PRECIPITATION DURING SURVEY)
Street: ROUTE 27
Location: PRIMARY ARTERIAL ROADS

GIS MH No: 1-213
Type of Manhole: SANITARY SEWER (GRAVITY)
Inspection Status: SURFACE INSPECTION: LEVEL 1 (NO MANHOLE ENTRY)
Rim to Invert (ft): 8.75
Grade to Rim (in): 0

Manhole Infiltration

Surcharge: NO
Infiltration: NO
Number of Holes: 0
Metal Riser: NO

Manhole Characteristics

Location in MH	Mtrl. Code	Infil. Code	Cond. Code	Repair Codes	Comments
Frame/Cover	CAST IRON	NONE	SOUND	NONE	
Chimney	BRICK	NONE	SOUND	NONE	
Cone	CONCRETE (PRECAST)	NONE	SOUND	NONE	
Wall	CONCRETE (PRECAST)	NONE	SOUND	NONE	
Bench	BRICK	NONE	SOUND	NONE	
Invert/Channel	BRICK	NONE	SOUND	NONE	

Invert Information

Pipe	Direction	Rim to Invert	Pipe Dia. (in)	Pipe Mtrl. Code	Clock Position*	Comments
Pipe 1	OUT	8.75	8	POLY VINYL CHLORIDE	06:00	
Pipe 2	IN	8.75	8	POLY VINYL CHLORIDE	12:00	
Pipe 3						
Pipe 4						
Pipe 5						

Additional
Comments

*6:00 is outlet



CDM
Smith

Town of Stonington, Connecticut

Manhole Inspection Form

Manhole Information

Inspector: BH AND TT

Date: 4/28/2022

Weather: DRY (NO PRECIPITATION DURING SURVEY)

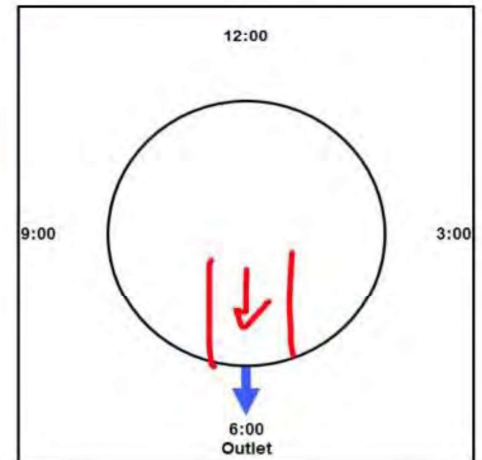
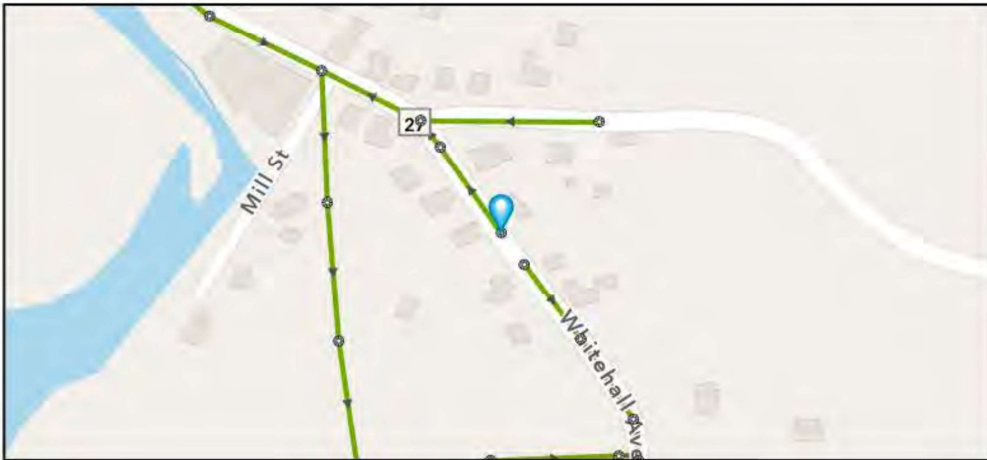
Street: ROUTE 27

GIS MH No: 1-214

Type of Manhole: SANITARY SEWER (GRAVITY)

Inspection Status: SURFACE INSPECTION: LEVEL 1 (NO MANHOLE ENTRY)

Manhole Location and Configuration



Inspection Photos



**Manhole Inspection Form****Manhole Information****Inspector:** BH AND TT**Date:** 4/28/2022**Weather:** DRY (NO PRECIPITATION DURING SURVEY)**Street:** ROUTE 27**Location:** PRIMARY ARTERIAL ROADS**GIS MH No:** 1-214**Type of Manhole:** SANITARY SEWER (GRAVITY)**Inspection Status:** SURFACE INSPECTION: LEVEL 1 (NO MANHOLE ENTRY)**Rim to Invert (ft):** 7**Grade to Rim (in):** 0**Manhole Infiltration****Surcharge:** NO**Infiltration:** NO**Number of Holes:** 4**Metal Riser:** YES**Manhole Characteristics**

Location in MH	Mtrl. Code	Infil. Code	Cond. Code	Repair Codes	Comments
Frame/Cover	CAST IRON	NONE	SOUND	NONE	
Chimney	BRICK	NONE	SOUND	NONE	
Cone	OTHER (DESCRIBE IN DETAILS)	NONE	SOUND	NONE	NO CONE
Wall	CONCRETE (PRECAST)	NONE	SOUND	NONE	
Bench	BRICK	NONE	SOUND	NONE	
Invert/Channel	BRICK	NONE	SOUND	NONE	

Invert Information

Pipe	Direction	Rim to Invert	Pipe Dia. (in)	Pipe Mtrl. Code	Clock Position*	Comments
Pipe 1	OUT	7	8	REINFORCED CONCRETE PIPE	06:00	
Pipe 2						
Pipe 3						
Pipe 4						
Pipe 5						

**Additional
Comments**



Manhole Inspection Form

Manhole Information

Inspector: BM AK60006

Date: 9/8/2022

Weather: DRY (NO PRECIPITATION DURING SURVEY)

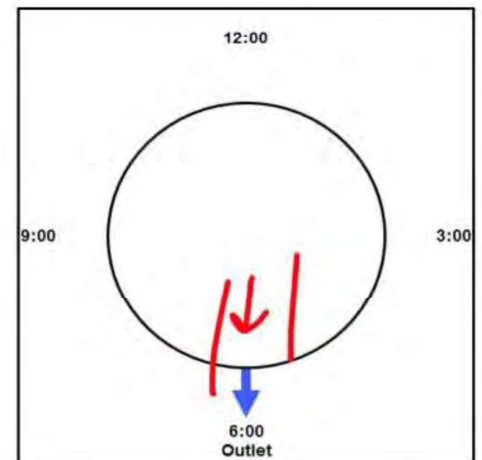
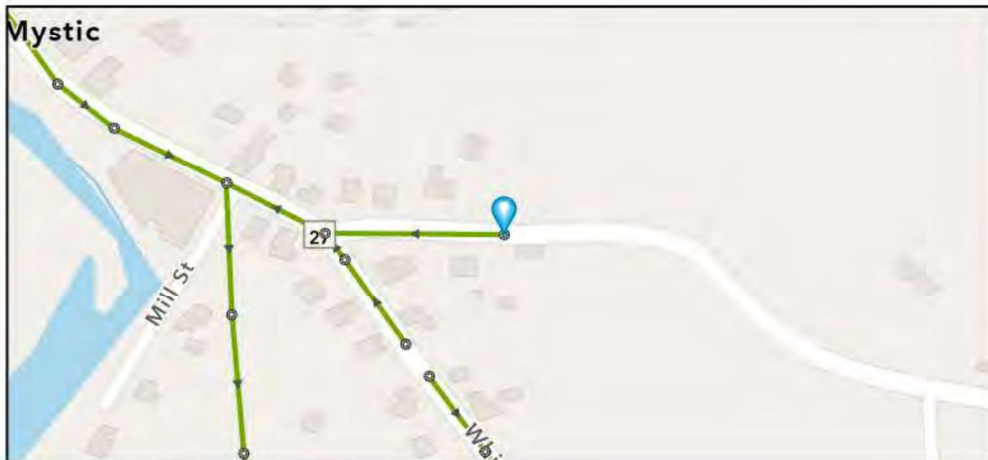
Street: ROUTE 234

GIS MH No: 1-215

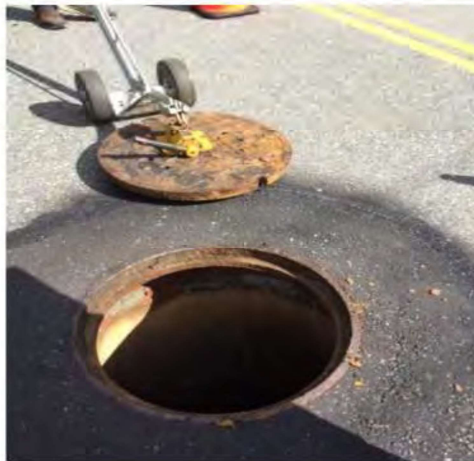
Type of Manhole: SANITARY SEWER (GRAVITY)

Inspection Status: SURFACE INSPECTION: LEVEL 1 (NO MANHOLE ENTRY)

Manhole Location and Configuration



Inspection Photos



**Manhole Inspection Form****Manhole Information**

Inspector: BM AK60006 **GIS MH No:** 1-215
Date: 9/8/2022 **Type of Manhole:** SANITARY SEWER (GRAVITY)
Weather: DRY (NO PRECIPITATION DURING SURVEY) **Inspection Status:** SURFACE INSPECTION: LEVEL 1 (NO MANHOLE ENTRY)
Street: ROUTE 234 **Rim to Invert (ft):** 8.75
Location: SECONDARY ROADS **Grade to Rim (in):** 0

Manhole Infiltration

Surcharge: NO **Number of Holes:** 4
Infiltration: NO **Metal Riser:** NO

Manhole Characteristics

Location in MH	Mtrl. Code	Infil. Code	Cond. Code	Repair Codes	Comments
Frame/Cover	CAST IRON	NONE	CORRODED	REPLACE FRAME AND COVER	
Chimney	BRICK	NONE	SOUND	NONE	
Cone	CONCRETE (PRECAST)	NONE	SOUND	NONE	
Wall	CONCRETE (PRECAST)	NONE	SOUND	NONE	
Bench	BRICK	NONE	SOUND	NONE	
Invert/Channel	BRICK	NONE	SOUND	NONE	

Invert Information

Pipe	Direction	Rim to Invert	Pipe Dia. (in)	Pipe Mtrl. Code	Clock Position*	Comments
Pipe 1	OUT	8.75	8	POLY VINYL CHLORIDE	06:00	
Pipe 2						
Pipe 3						
Pipe 4						
Pipe 5						

Additional
Comments



CDM
Smith

Town of Stonington, Connecticut

Manhole Inspection Form

Manhole Information

Inspector: BM AK

Date: 9/8/2022

Weather: DRY (NO PRECIPITATION DURING SURVEY)

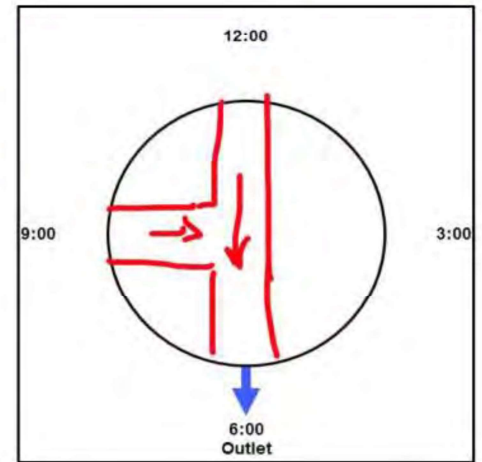
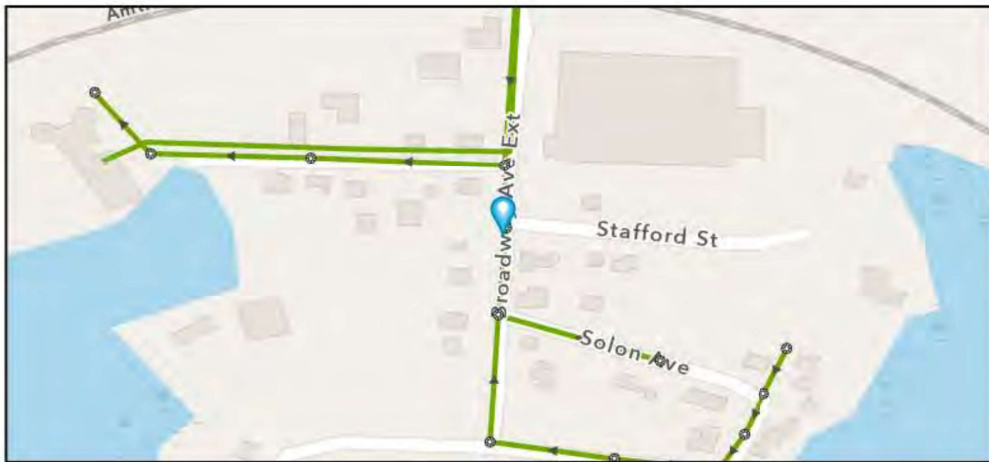
Street: CORNER OF BROADWAY AVE EXT AND STAFFORD

GIS MH No: 1-216

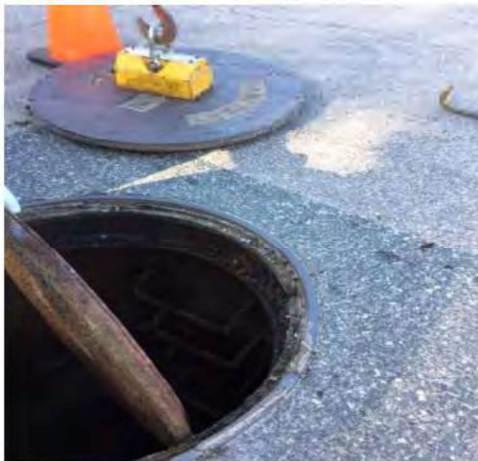
Type of Manhole: SANITARY SEWER (GRAVITY)

Inspection Status: SURFACE INSPECTION: LEVEL 1 (NO MANHOLE ENTRY)

Manhole Location and Configuration



Inspection Photos





Town of Stonington, Connecticut

Manhole Inspection Form

Manhole Information

Inspector: BM AK
Date: 9/8/2022
Weather: DRY (NO PRECIPITATION DURING SURVEY)
Street: CORNER OF BROADWAY AVE EXT AND STAFFORD
Location: LOCAL RURAL STREETS

GIS MH No: 1-216
Type of Manhole: SANITARY SEWER (GRAVITY)
Inspection Status: SURFACE INSPECTION: LEVEL 1 (NO MANHOLE ENTRY)
Rim to Invert (ft): 11.75
Grade to Rim (in): 0

Manhole Infiltration

Surcharge: NO
Infiltration: YES

Number of Holes: 0
Metal Riser: NO

Manhole Characteristics

Location in MH	Mtrl. Code	Infil. Code	Cond. Code	Repair Codes	Comments
Frame/Cover	CAST IRON	NONE	SOUND	OTHER	WATER TIGHT COVER NEEDS TO BE REPLACED, NO HANDLES
Chimney	OTHER (DESCRIBE IN DETAILS)	NONE	SOUND	NONE	NO CHIMNEY
Cone	CONCRETE (PRECAST)	NONE	SOUND	NONE	
Wall	CONCRETE (PRECAST)	STAINS	SOUND	NONE	
Bench	BRICK	NONE	SOUND	NONE	
Invert/Channel	BRICK	NONE	SOUND	NONE	

Invert Information

Pipe	Direction	Rim to Invert	Pipe Dia. (in)	Pipe Mtrl. Code	Clock Position*	Comments
Pipe 1	OUT	11.75	8	POLY VINYL CHLORIDE	06:00	
Pipe 2	IN	9	8	POLY VINYL CHLORIDE	09:00	TOP OF DROP
Pipe 3	IN	11.75	8	POLY VINYL CHLORIDE	09:00	BOTTOM OF DROP
Pipe 4	IN	11.75	8	POLY VINYL CHLORIDE	12:00	
Pipe 5						

Additional
Comments

*6:00 is outlet



CDM
Smith

Town of Stonington, Connecticut

Manhole Inspection Form

Manhole Information

Inspector: BM AK

Date: 9/8/2022

Weather: DRY (NO PRECIPITATION DURING SURVEY)

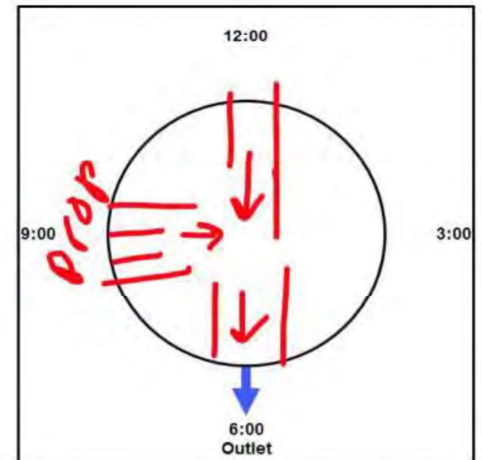
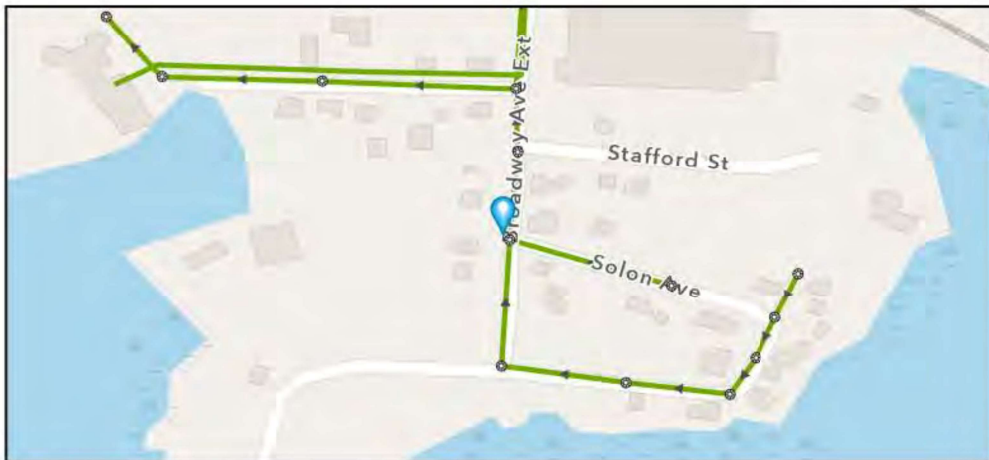
Street: CORNER OF BROADWAY AVE EXT AND SOLON AVE

GIS MH No: 1-217

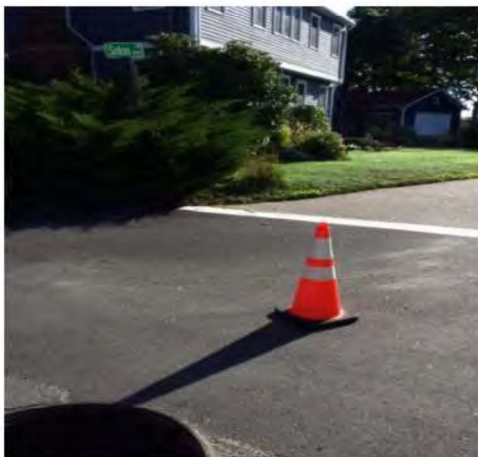
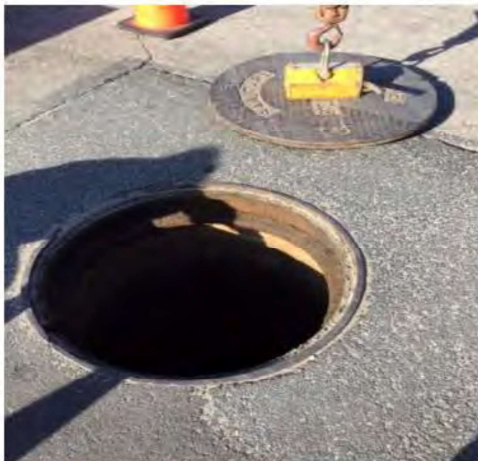
Type of Manhole: SANITARY SEWER (GRAVITY)

Inspection Status: SURFACE INSPECTION: LEVEL 1 (NO MANHOLE ENTRY)

Manhole Location and Configuration



Inspection Photos




Manhole Inspection Form
Manhole Information

Inspector: BM AK	GIS MH No: 1-217
Date: 9/8/2022	Type of Manhole: SANITARY SEWER (GRAVITY)
Weather: DRY (NO PRECIPITATION DURING SURVEY)	Inspection Status: SURFACE INSPECTION: LEVEL 1 (NO MANHOLE ENTRY)
Street: CORNER OF BROADWAY AVE EXT AND SOLON AVE	Rim to Invert (ft): 10.5
Location: LOCAL RURAL STREETS	Grade to Rim (in): 0

Manhole Infiltration

Surcharge: NO	Number of Holes: 0
Infiltration: NO	Metal Riser: NO

Manhole Characteristics

Location in MH	Mtrl. Code	Infil. Code	Cond. Code	Repair Codes	Comments
Frame/Cover	CAST IRON	NONE	BROKEN	REPLACE FRAME AND COVER	FRAME NEEDS TO BE REPLACED, ALSO WATER TIGHT COVER NEEDS TO BE REPLACED, NO HANDLES BRICK AND CONCRETE
Chimney	BRICK	NONE	SOUND	NONE	
Cone	CONCRETE (PRECAST)	NONE	SOUND	NONE	
Wall	CONCRETE (PRECAST)	NONE	SOUND	NONE	
Bench	BRICK	NONE	SOUND	NONE	
Invert/Channel	BRICK	NONE	SOUND	NONE	

Invert Information

Pipe	Direction	Rim to Invert	Pipe Dia. (in)	Pipe Mtrl. Code	Clock Position*	Comments
Pipe 1	OUT	10.5	8	POLY VINYL CHLORIDE	06:00	
Pipe 2	IN	8	8	POLY VINYL CHLORIDE	09:00	TOP OF DROP
Pipe 3	IN	10.5	8	POLY VINYL CHLORIDE	09:00	BOTTOM OF DROP
Pipe 4	IN	10.5	8	POLY VINYL CHLORIDE	12:00	
Pipe 5						

**Additional
Comments**



CDM
Smith

Town of Stonington, Connecticut

Manhole Inspection Form

Manhole Information

Inspector: BM AK

Date: 9/8/2022

Weather: DRY (NO PRECIPITATION DURING SURVEY)

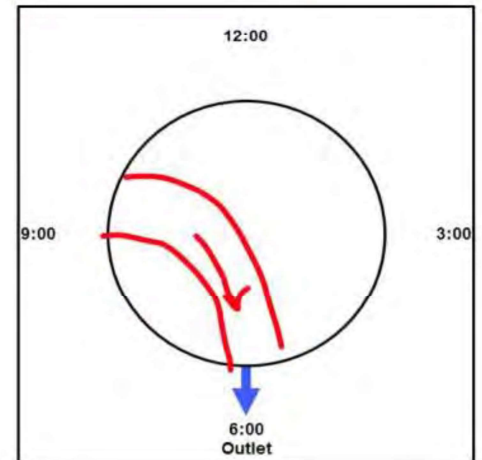
Street: END OF BROADWAY AVE EXT

GIS MH No: 1-218

Type of Manhole: SANITARY SEWER (GRAVITY)

Inspection Status: SURFACE INSPECTION: LEVEL 1 (NO MANHOLE ENTRY)

Manhole Location and Configuration



Inspection Photos



**Manhole Inspection Form****Manhole Information**

Inspector: BM AK
Date: 9/8/2022
Weather: DRY (NO PRECIPITATION DURING SURVEY)
Street: END OF BROADWAY AVE EXT
Location: LOCAL RURAL STREETS

GIS MH No: 1-218
Type of Manhole: SANITARY SEWER (GRAVITY)
Inspection Status: SURFACE INSPECTION: LEVEL 1 (NO MANHOLE ENTRY)
Rim to Invert (ft): 8
Grade to Rim (in): 0

Manhole Infiltration

Surcharge: NO
Infiltration: YES

Number of Holes: 0
Metal Riser: NO

Manhole Characteristics

Location in MH	Mtrl. Code	Infil. Code	Cond. Code	Repair Codes	Comments
Frame/Cover	CAST IRON	WEEPER	BROKEN	REPLACE FRAME AND COVER	REPLACE FRAME AND WATER TIGHT COVER
Chimney	BRICK	NONE	SOUND	NONE	
Cone	CONCRETE (PRECAST)	NONE	SOUND	NONE	
Wall	CONCRETE (PRECAST)	STAINS	DEFECTIVE	LINE_MANHOLE	
Bench	BRICK	NONE	DEFECTIVE	CLEAN	MULTIPLE ADDITIONAL BRICKS
Invert/Channel	BRICK	NONE	SOUND	NONE	

Invert Information

Pipe	Direction	Rim to Invert	Pipe Dia. (in)	Pipe Mtrl. Code	Clock Position*	Comments
Pipe 1	OUT	8	8	POLY VINYL CHLORIDE	06:00	
Pipe 2	IN	8	8	POLY VINYL CHLORIDE	09:00	
Pipe 3						
Pipe 4						
Pipe 5						

Additional
Comments



Town of Stonington, Connecticut

Manhole Inspection Form

Manhole Information

Inspector: BM AK

Date: 9/8/2022

Weather: DRY (NO PRECIPITATION DURING SURVEY)

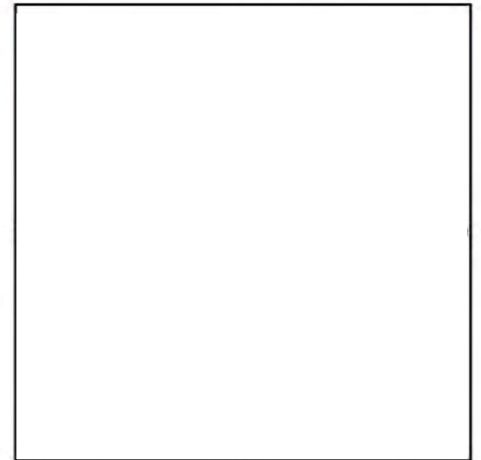
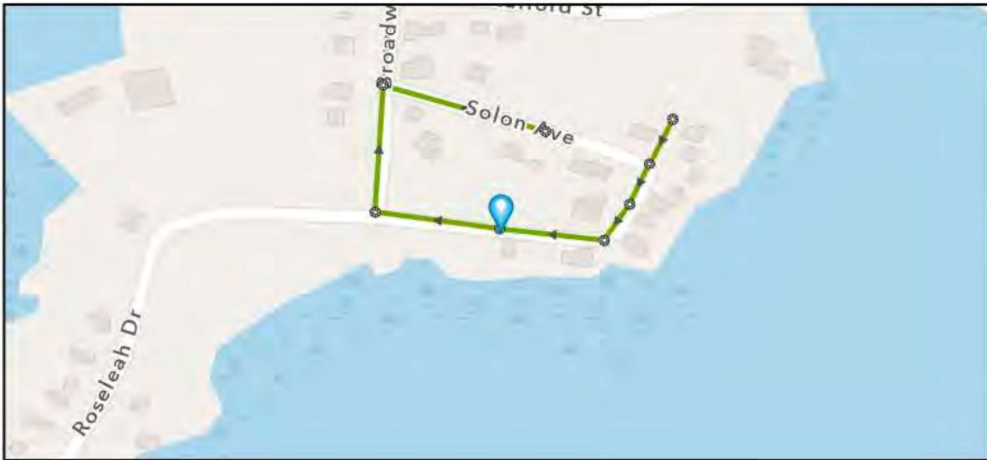
Street: JEROME AVE

GIS MH No: 1-219

Type of Manhole:

Inspection Status: NO ACCESS

Manhole Location and Configuration



Inspection Photos





Town of Stonington, Connecticut

Manhole Inspection Form

Manhole Information

Inspector: BM AK
Date: 9/8/2022
Weather: DRY (NO PRECIPITATION DURING SURVEY)
Street: JEROME AVE
Location: LOCAL RURAL STREETS

GIS MH No: 1-219
Type of Manhole:
Inspection Status: NO ACCESS
Rim to Invert (ft):
Grade to Rim (in):

Manhole Infiltration

Surcharge:
Infiltration:

Number of Holes:
Metal Riser:

Manhole Characteristics

Location in MH	Mtrl. Code	Infil. Code	Cond. Code	Repair Codes	Comments
Frame/Cover					
Chimney					
Cone					
Wall					
Bench					
Invert/Channel					

Invert Information

Pipe	Direction	Rim to Invert	Pipe Dia. (in)	Pipe Mtrl. Code	Clock Position*	Comments
Pipe 1						
Pipe 2						
Pipe 3						
Pipe 4						
Pipe 5						

Additional
Comments



CDM
Smith

Town of Stonington, Connecticut

Manhole Inspection Form

Manhole Information

Inspector: BM AK

Date: 9/8/2022

Weather: DRY (NO PRECIPITATION DURING SURVEY)

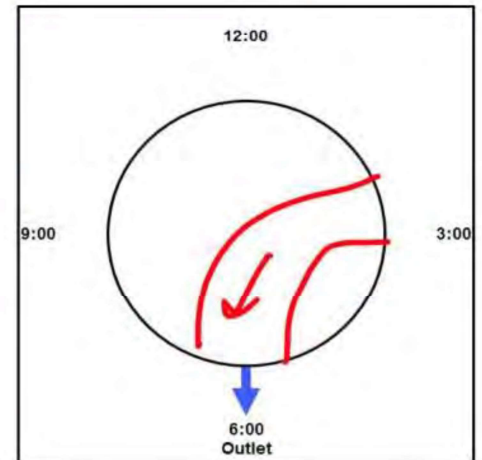
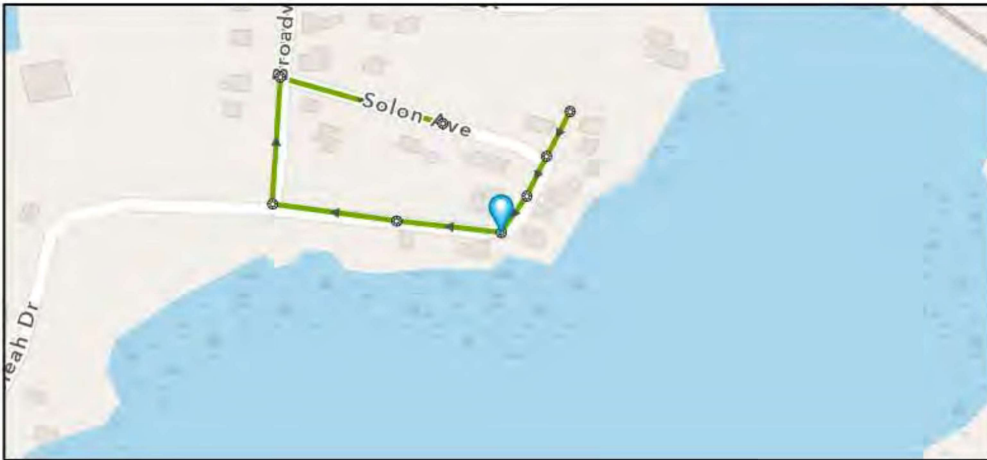
Street: JEROME AVE

GIS MH No: 1-220

Type of Manhole: SANITARY SEWER (GRAVITY)

Inspection Status: SURFACE INSPECTION: LEVEL 1 (NO MANHOLE ENTRY)

Manhole Location and Configuration



Inspection Photos



**Manhole Inspection Form****Manhole Information**

Inspector: BM AK
Date: 9/8/2022
Weather: DRY (NO PRECIPITATION DURING SURVEY)
Street: JEROME AVE
Location: LOCAL RURAL STREETS

GIS MH No: 1-220
Type of Manhole: SANITARY SEWER (GRAVITY)
Inspection Status: SURFACE INSPECTION: LEVEL 1 (NO MANHOLE ENTRY)
Rim to Invert (ft): 8
Grade to Rim (in): 0

Manhole Infiltration

Surcharge: NO
Infiltration: YES

Number of Holes: 0
Metal Riser: NO

Manhole Characteristics

Location in MH	Mtrl. Code	Infil. Code	Cond. Code	Repair Codes	Comments
Frame/Cover	CAST IRON	NONE	SOUND	NONE	
Chimney	BRICK	NONE	SOUND	NONE	
Cone	CONCRETE (PRECAST)	NONE	SOUND	NONE	
Wall	CONCRETE (PRECAST)	RUNNER	DEFECTIVE	LINE_MANHOLE	INFILTRATION WHERE WALL MEETS CONE, IN JOINT
Bench	BRICK	NONE	SOUND	NONE	
Invert/Channel	BRICK	NONE	SOUND	NONE	

Invert Information

Pipe	Direction	Rim to Invert	Pipe Dia. (in)	Pipe Mtrl. Code	Clock Position*	Comments
Pipe 1	OUT	8	8	POLY VINYL CHLORIDE	06:00	
Pipe 2	IN	8	8	POLY VINYL CHLORIDE	02:00	
Pipe 3						
Pipe 4						
Pipe 5						

Additional
Comments



Town of Stonington, Connecticut

Manhole Inspection Form

Manhole Information

Inspector: BM AK

Date: 9/8/2022

Weather: DRY (NO PRECIPITATION DURING SURVEY)

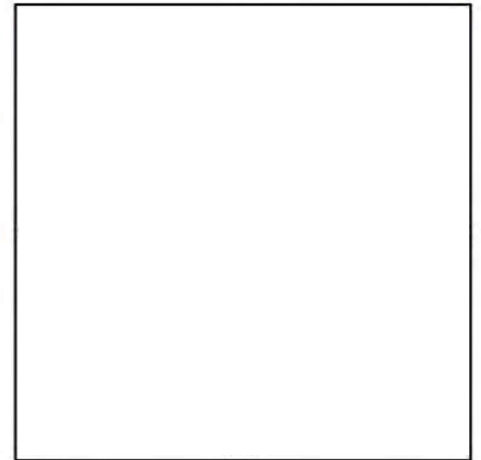
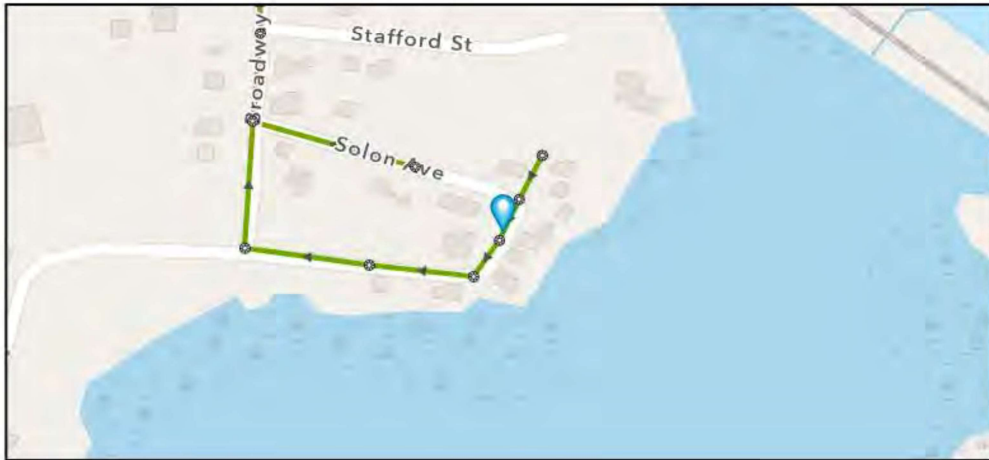
Street: 3 SYLVIA AVE

GIS MH No: 1-221

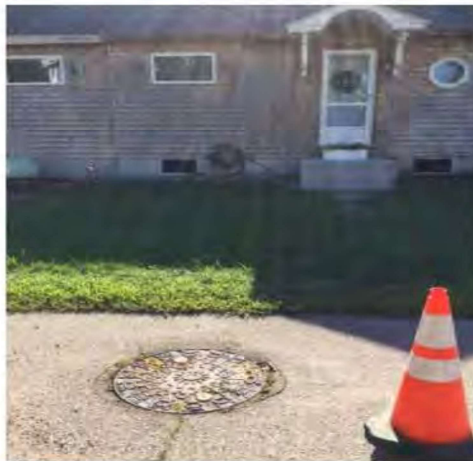
Type of Manhole:

Inspection Status: NO ACCESS

Manhole Location and Configuration



Inspection Photos





Town of Stonington, Connecticut

Manhole Inspection Form

Manhole Information

Inspector: BM AK

Date: 9/8/2022

Weather: DRY (NO PRECIPITATION DURING SURVEY)

Street: 3 SYLVIA AVE

Location: LOCAL RURAL STREETS

GIS MH No: 1-221

Type of Manhole:

Inspection Status: NO ACCESS

Rim to Invert (ft):

Grade to Rim (in):

Manhole Infiltration

Surcharge:

Infiltration:

Number of Holes:

Metal Riser:

Manhole Characteristics

Location in MH	Mtrl. Code	Infil. Code	Cond. Code	Repair Codes	Comments
Frame/Cover					
Chimney					
Cone					
Wall					
Bench					
Invert/Channel					

Invert Information

Pipe	Direction	Rim to Invert	Pipe Dia. (in)	Pipe Mtrl. Code	Clock Position*	Comments
Pipe 1						
Pipe 2						
Pipe 3						
Pipe 4						
Pipe 5						

Additional
Comments



CDM
Smith

Town of Stonington, Connecticut

Manhole Inspection Form

Manhole Information

Inspector: BM AK

Date: 9/8/2022

Weather: DRY (NO PRECIPITATION DURING SURVEY)

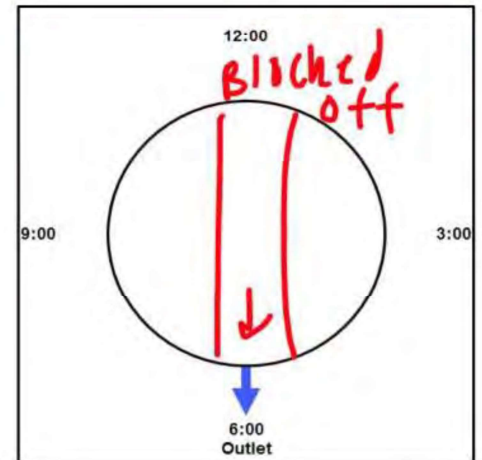
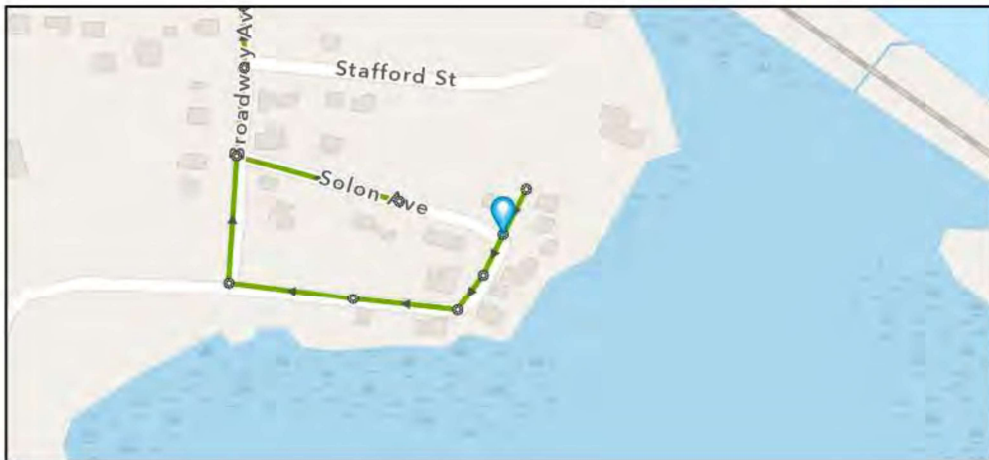
Street: CORNER OF SOLON AND SYLVIA

GIS MH No: 1-222

Type of Manhole: SANITARY SEWER (GRAVITY)

Inspection Status: SURFACE INSPECTION: LEVEL 1 (NO MANHOLE ENTRY)

Manhole Location and Configuration



Inspection Photos



**Manhole Inspection Form****Manhole Information**

Inspector: BM AK
Date: 9/8/2022
Weather: DRY (NO PRECIPITATION DURING SURVEY)
Street: CORNER OF SOLON AND SYLVIA
Location: LOCAL RURAL STREETS

GIS MH No: 1-222
Type of Manhole: SANITARY SEWER (GRAVITY)
Inspection Status: SURFACE INSPECTION: LEVEL 1 (NO MANHOLE ENTRY)
Rim to Invert (ft): 7
Grade to Rim (in): 0

Manhole Infiltration

Surcharge: NO
Infiltration: NO

Number of Holes: 0
Metal Riser: NO

Manhole Characteristics

Location in MH	Mtrl. Code	Infil. Code	Cond. Code	Repair Codes	Comments
Frame/Cover	CAST IRON	NONE	SOUND	NONE	
Chimney	BRICK	NONE	DEFECTIVE	OTHER	REPLACE PART OF CHIMNEY
Cone	CONCRETE (PRECAST)	NONE	SOUND	NONE	
Wall	CONCRETE (PRECAST)	NONE	SOUND	NONE	
Bench	BRICK	NONE	SOUND	NONE	
Invert/Channel	BRICK	NONE	SOUND	NONE	

Invert Information

Pipe	Direction	Rim to Invert	Pipe Dia. (in)	Pipe Mtrl. Code	Clock Position*	Comments
Pipe 1	OUT	7	8	POLY VINYL CHLORIDE	06:00	
Pipe 2	IN	7	8	POLY VINYL CHLORIDE	12:00	BLOCKED OFF, NOW DEAD END
Pipe 3						
Pipe 4						
Pipe 5						

**Additional
Comments**



Town of Stonington, Connecticut

Manhole Inspection Form

Manhole Information

Inspector: BM AK

Date: 9/8/2022

Weather: DRY (NO PRECIPITATION DURING SURVEY)

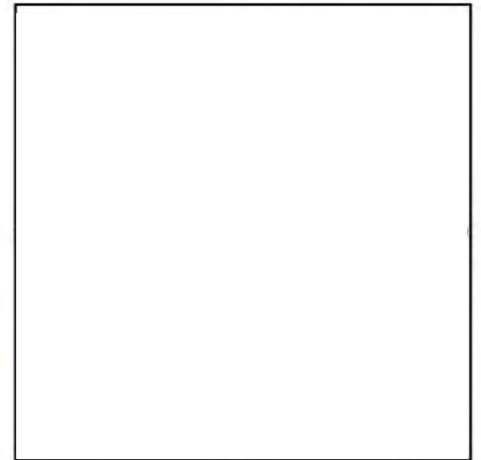
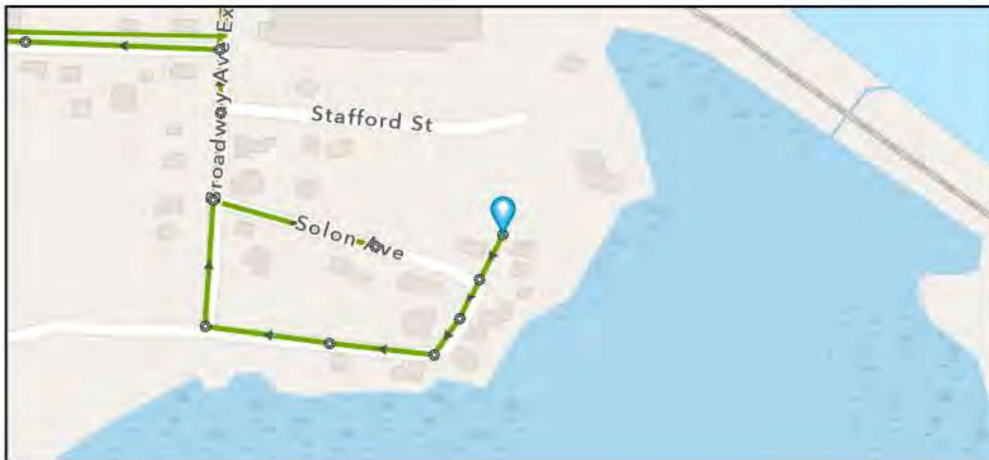
Street: SOLON AVE

GIS MH No: 1-223

Type of Manhole:

Inspection Status: NOT FOUND

Manhole Location and Configuration



Inspection Photos



**Manhole Inspection Form****Manhole Information**

Inspector: BM AK

GIS MH No: 1-223

Date: 9/8/2022

Type of Manhole:

Weather: DRY (NO PRECIPITATION DURING SURVEY)

Inspection Status: NOT FOUND

Street: SOLON AVE

Rim to Invert (ft):

Location: LOCAL RURAL STREETS

Grade to Rim (in):

Manhole Infiltration

Surcharge:

Number of Holes:

Infiltration:

Metal Riser:

Manhole Characteristics

Location in MH	Mtrl. Code	Infil. Code	Cond. Code	Repair Codes	Comments
Frame/Cover					
Chimney					
Cone					
Wall					
Bench					
Invert/Channel					

Invert Information

Pipe	Direction	Rim to Invert	Pipe Dia. (in)	Pipe Mtrl. Code	Clock Position*	Comments
Pipe 1						
Pipe 2						
Pipe 3						
Pipe 4						
Pipe 5						

Additional
Comments



Town of Stonington, Connecticut

Manhole Inspection Form

Manhole Information

Inspector: BM AK

Date: 9/8/2022

Weather: DRY (NO PRECIPITATION DURING SURVEY)

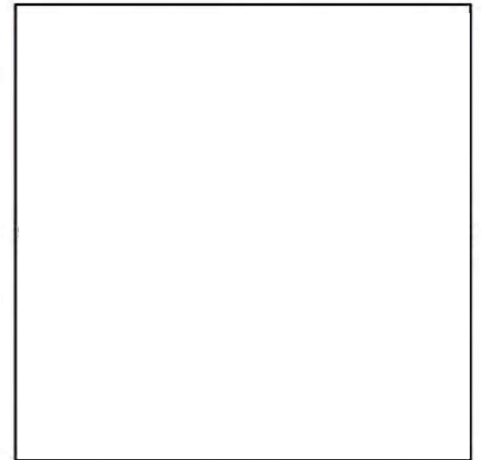
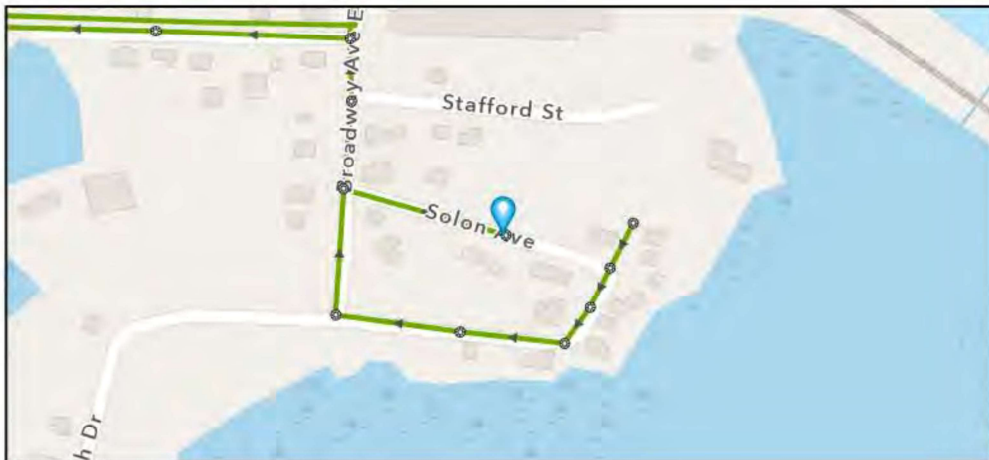
Street: 12 SOLON AVE

GIS MH No: 1-224

Type of Manhole:

Inspection Status: NO ACCESS

Manhole Location and Configuration



Inspection Photos





Town of Stonington, Connecticut

Manhole Inspection Form

Manhole Information

Inspector: BM AK

GIS MH No: 1-224

Date: 9/8/2022

Type of Manhole:

Weather: DRY (NO PRECIPITATION DURING SURVEY)

Inspection Status: NO ACCESS

Street: 12 SOLON AVE

Rim to Invert (ft):

Location: LOCAL RURAL STREETS

Grade to Rim (in):

Manhole Infiltration

Surcharge:

Number of Holes:

Infiltration:

Metal Riser:

Manhole Characteristics

Location in MH	Mtrl. Code	Infil. Code	Cond. Code	Repair Codes	Comments
Frame/Cover					
Chimney					
Cone					
Wall					
Bench					
Invert/Channel					

Invert Information

Pipe	Direction	Rim to Invert	Pipe Dia. (in)	Pipe Mtrl. Code	Clock Position*	Comments
Pipe 1						
Pipe 2						
Pipe 3						
Pipe 4						
Pipe 5						

Additional
Comments



CDM
Smith

Town of Stonington, Connecticut

Manhole Inspection Form

Manhole Information

Inspector: BM AK

Date: 9/8/2022

Weather: DRY (NO PRECIPITATION DURING SURVEY)

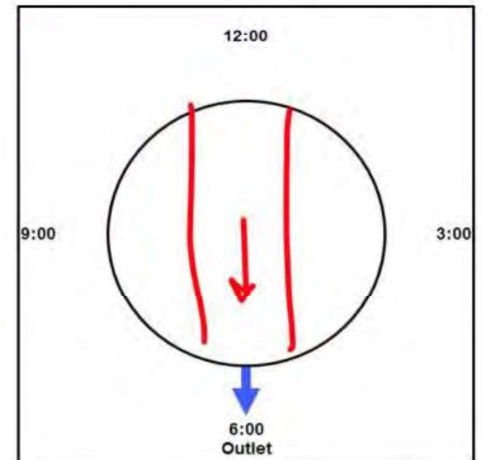
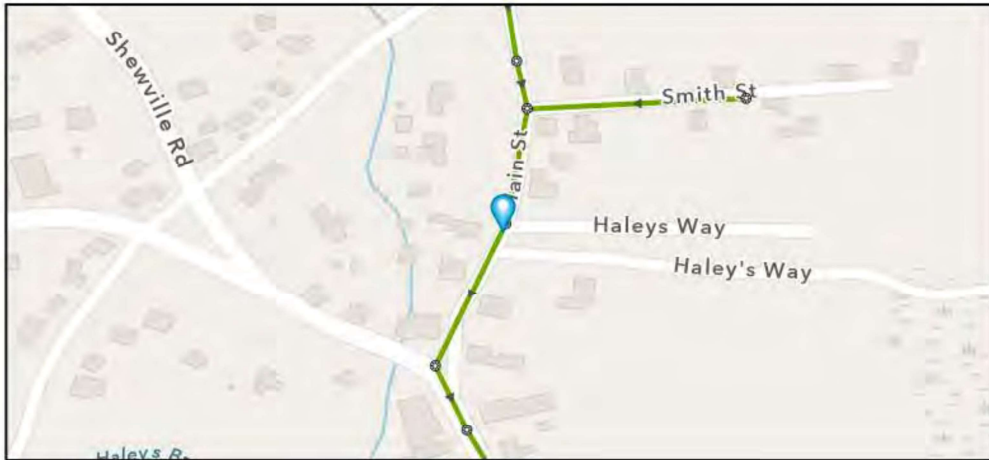
Street: ROUTE 27

GIS MH No: 1-225

Type of Manhole: SANITARY SEWER (GRAVITY)

Inspection Status: SURFACE INSPECTION: LEVEL 1 (NO MANHOLE ENTRY)

Manhole Location and Configuration



Inspection Photos



**Manhole Inspection Form****Manhole Information**

Inspector: BM AK
Date: 9/8/2022
Weather: DRY (NO PRECIPITATION DURING SURVEY)
Street: ROUTE 27
Location: PRIMARY ARTERIAL ROADS

GIS MH No: 1-225
Type of Manhole: SANITARY SEWER (GRAVITY)
Inspection Status: SURFACE INSPECTION: LEVEL 1 (NO MANHOLE ENTRY)
Rim to Invert (ft): 8.25
Grade to Rim (in): 0

Manhole Infiltration

Surcharge: NO
Infiltration: NO

Number of Holes: 0
Metal Riser: NO

Manhole Characteristics

Location in MH	Mtrl. Code	Infil. Code	Cond. Code	Repair Codes	Comments
Frame/Cover	CAST IRON	NONE	BROKEN	REPLACE FRAME AND COVER	SEAL IS COMING OFF FROM FRAME
Chimney	OTHER (DESCRIBE IN DETAILS)	NONE	SOUND	NONE	NO CHIMNEY
Cone	CONCRETE (PRECAST)	NONE	SOUND	NONE	
Wall	CONCRETE (PRECAST)	STAINS	SOUND	NONE	
Bench	BRICK	NONE	SOUND	NONE	
Invert/Channel	BRICK	NONE	SOUND	NONE	

Invert Information

Pipe	Direction	Rim to Invert	Pipe Dia. (in)	Pipe Mtrl. Code	Clock Position*	Comments
Pipe 1	OUT	8.25	8	POLY VINYL CHLORIDE	06:00	
Pipe 2	IN	8.25	8	POLY VINYL CHLORIDE	12:00	
Pipe 3						
Pipe 4						
Pipe 5						

**Additional
Comments**



CDM
Smith

Town of Stonington, Connecticut

Manhole Inspection Form

Manhole Information

Inspector: BH AND TT

Date: 4/28/2022

Weather: DRY (NO PRECIPITATION DURING SURVEY)

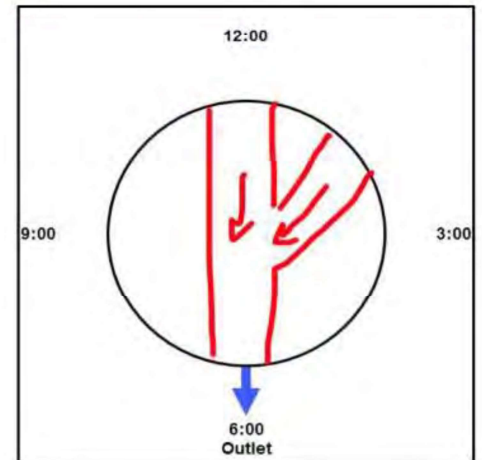
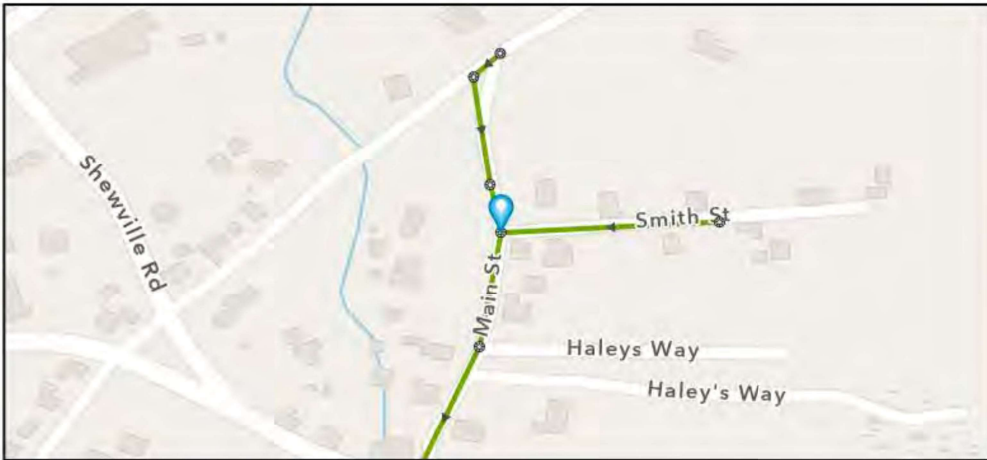
Street: MAIN STREET

GIS MH No: 1-226

Type of Manhole: SANITARY SEWER (GRAVITY)

Inspection Status: SURFACE INSPECTION: LEVEL 1 (NO MANHOLE ENTRY)

Manhole Location and Configuration



Inspection Photos



**Manhole Inspection Form****Manhole Information****Inspector:** BH AND TT**Date:** 4/28/2022**Weather:** DRY (NO PRECIPITATION DURING SURVEY)**GIS MH No:** 1-226**Type of Manhole:** SANITARY SEWER (GRAVITY)**Inspection Status:** SURFACE INSPECTION: LEVEL 1 (NO MANHOLE ENTRY)**Street:** MAIN STREET**Location:** PRIMARY ARTERIAL ROADS**Rim to Invert (ft):** 7.5**Grade to Rim (in):** 0**Manhole Infiltration****Surcharge:** NO**Infiltration:** YES**Number of Holes:** 0**Metal Riser:** NO**Manhole Characteristics**

Location in MH	Mtrl. Code	Infil. Code	Cond. Code	Repair Codes	Comments
Frame/Cover	CAST IRON	STAINS	SOUND	NONE	
Chimney	BRICK	STAINS	SOUND	LINE MANHOLE	
Cone	CONCRETE (PRECAST)	NONE	SOUND	NONE	
Wall	CONCRETE (PRECAST)	STAINS	DEFECTIVE	LINE_MANHOLE	
Bench	BRICK	NONE	SOUND	NONE	
Invert/Channel	BRICK	NONE	SOUND	CLEAN	

Invert Information

Pipe	Direction	Rim to Invert	Pipe Dia. (in)	Pipe Mtrl. Code	Clock Position*	Comments
Pipe 1	OUT	7.5	8	POLY VINYL CHLORIDE	06:00	
Pipe 2	IN	7.5	8	POLY VINYL CHLORIDE	12:00	
Pipe 3	IN	7.5	8	POLY VINYL CHLORIDE	03:00	
Pipe 4						
Pipe 5						

**Additional
Comments**



CDM
Smith

Town of Stonington, Connecticut

Manhole Inspection Form

Manhole Information

Inspector: BH AND TT

Date: 4/28/2022

Weather: DRY (NO PRECIPITATION DURING SURVEY)

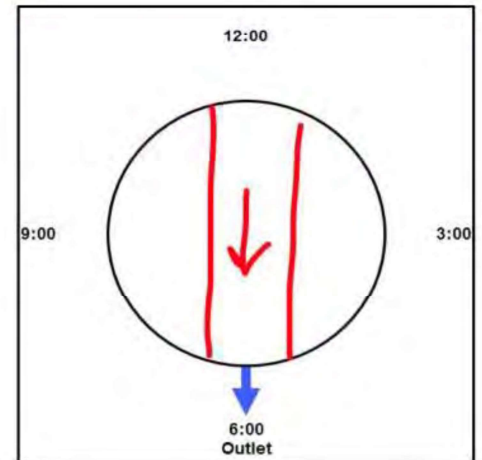
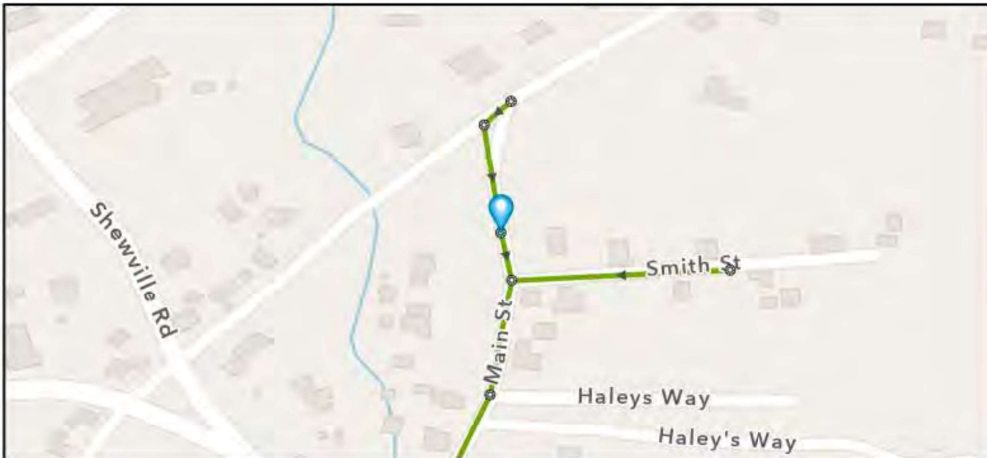
Street: MAIN STREET

GIS MH No: 1-227

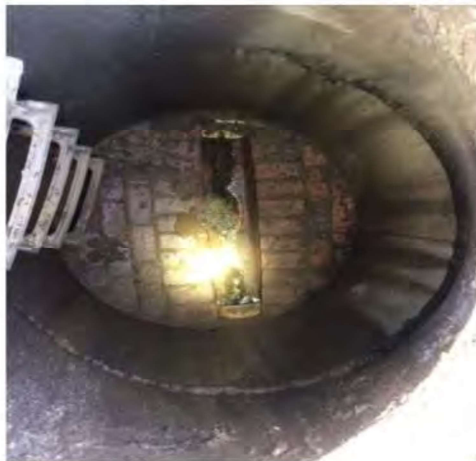
Type of Manhole: SANITARY SEWER (GRAVITY)

Inspection Status: SURFACE INSPECTION: LEVEL 1 (NO MANHOLE ENTRY)

Manhole Location and Configuration



Inspection Photos



**Manhole Inspection Form****Manhole Information****Inspector:** BH AND TT**Date:** 4/28/2022**Weather:** DRY (NO PRECIPITATION DURING SURVEY)**Street:** MAIN STREET**Location:** PRIMARY ARTERIAL ROADS**GIS MH No:** 1-227**Type of Manhole:** SANITARY SEWER (GRAVITY)**Inspection Status:** SURFACE INSPECTION: LEVEL 1 (NO MANHOLE ENTRY)**Rim to Invert (ft):** 7.75**Grade to Rim (in):** 0**Manhole Infiltration****Surcharge:** NO**Infiltration:** YES**Number of Holes:** 0**Metal Riser:** NO**Manhole Characteristics**

Location in MH	Mtrl. Code	Infil. Code	Cond. Code	Repair Codes	Comments
Frame/Cover	CAST IRON	STAINS	SOUND	NONE	
Chimney	BRICK	NONE	SOUND	NONE	
Cone	CONCRETE (PRECAST)	NONE	SOUND	NONE	
Wall	CONCRETE (PRECAST)	STAINS	DEFECTIVE	LINE_MANHOLE	
Bench	BRICK	NONE	SOUND	NONE	
Invert/Channel	BRICK	NONE	SOUND	NONE	

Invert Information

Pipe	Direction	Rim to Invert	Pipe Dia. (in)	Pipe Mtrl. Code	Clock Position*	Comments
Pipe 1	OUT	7.75	8	POLY VINYL CHLORIDE	06:00	
Pipe 2	IN	7.75	8	POLY VINYL CHLORIDE	12:00	
Pipe 3						
Pipe 4						
Pipe 5						

**Additional
Comments**



CDM
Smith

Town of Stonington, Connecticut

Manhole Inspection Form

Manhole Information

Inspector: BH AND TT

Date: 4/28/2022

Weather: DRY (NO PRECIPITATION DURING SURVEY)

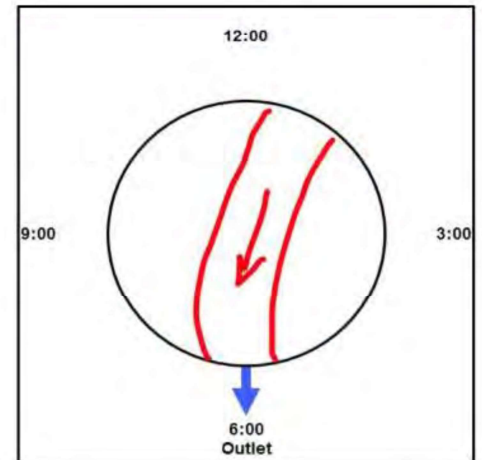
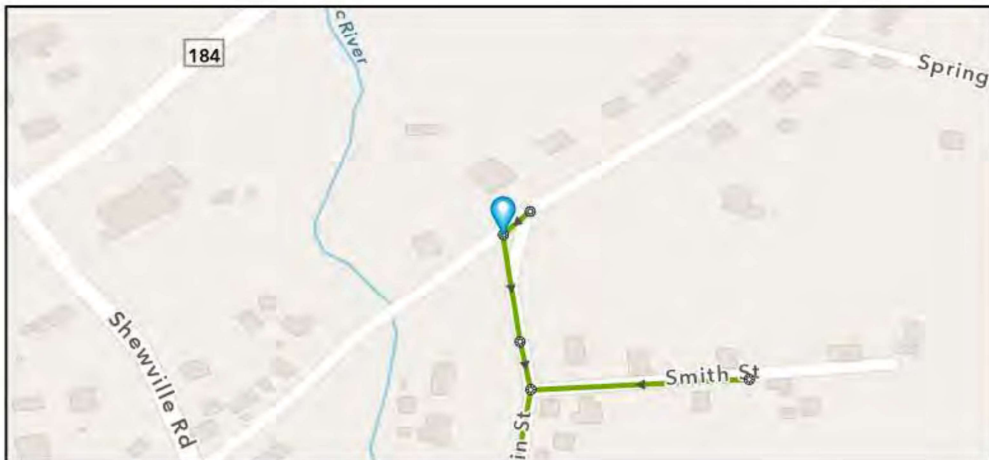
Street: NORTH STONINGTON ROAD

GIS MH No: 1-228

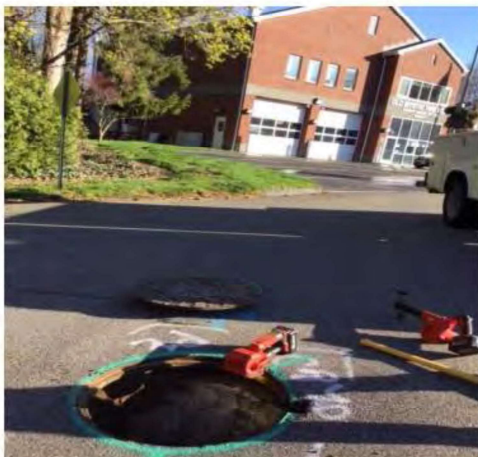
Type of Manhole: SANITARY SEWER (GRAVITY)

Inspection Status: SURFACE INSPECTION: LEVEL 1 (NO MANHOLE ENTRY)

Manhole Location and Configuration



Inspection Photos





Town of Stonington, Connecticut

Manhole Inspection Form

Manhole Information

Inspector: BH AND TT

Date: 4/28/2022

Weather: DRY (NO PRECIPITATION DURING SURVEY)

Street: NORTH STONINGTON ROAD

Location: PRIMARY ARTERIAL ROADS

GIS MH No: 1-228

Type of Manhole: SANITARY SEWER (GRAVITY)

Inspection Status: SURFACE INSPECTION: LEVEL 1 (NO MANHOLE ENTRY)

Rim to Invert (ft): 9.75

Grade to Rim (in): 0

Manhole Infiltration

Surcharge: NO

Infiltration: NO

Number of Holes: 0

Metal Riser: NO

Manhole Characteristics

Location in MH	Mtrl. Code	Infil. Code	Cond. Code	Repair Codes	Comments
Frame/Cover	CAST IRON	STAINS	SOUND	NONE	
Chimney	BRICK	NONE	SOUND	SEAL/REPOINT	
Cone	CONCRETE (PRECAST)	NONE	SOUND	NONE	
Wall	CONCRETE (PRECAST)	NONE	SOUND	NONE	
Bench	BRICK	NONE	SOUND	NONE	
Invert/Channel	BRICK	NONE	SOUND	NONE	

Invert Information

Pipe	Direction	Rim to Invert	Pipe Dia. (in)	Pipe Mtrl. Code	Clock Position*	Comments
Pipe 1	OUT	9.75	8	POLY VINYL CHLORIDE	06:00	
Pipe 2	IN	9.75	8	POLY VINYL CHLORIDE	01:00	
Pipe 3						
Pipe 4						
Pipe 5						

Additional
Comments

*6:00 is outlet



CDM
Smith

Town of Stonington, Connecticut

Manhole Inspection Form

Manhole Information

Inspector: BM TT

Date: 4/28/2022

Weather: DRY (NO PRECIPITATION DURING SURVEY)

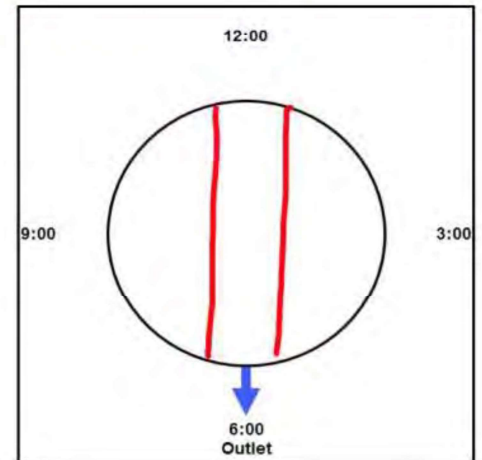
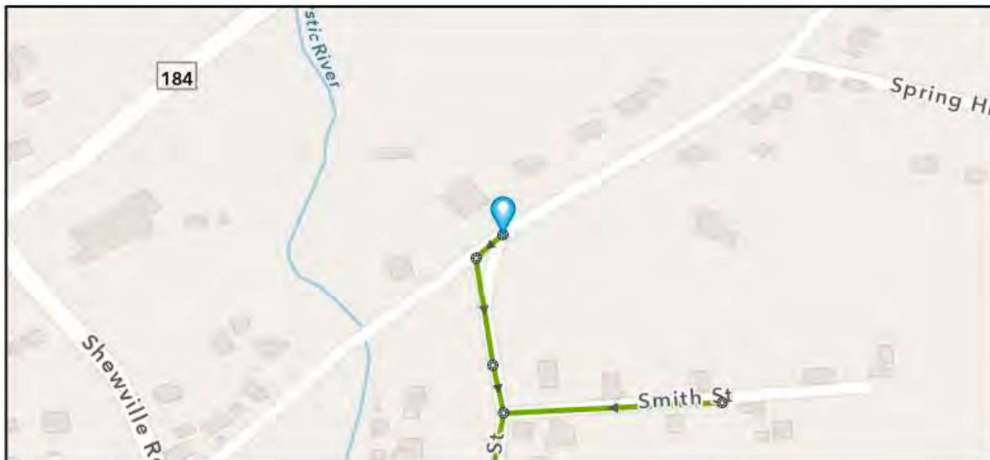
Street: NORTH STONINGTON ROAD

GIS MH No: 1-229

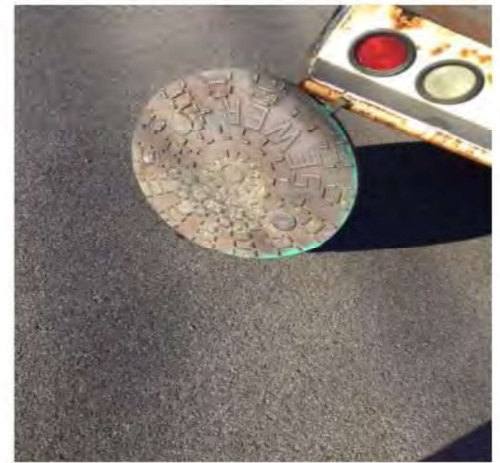
Type of Manhole: SANITARY SEWER (GRAVITY)

Inspection Status: SURFACE INSPECTION: LEVEL 1 (NO MANHOLE ENTRY)

Manhole Location and Configuration



Inspection Photos





Town of Stonington, Connecticut

Manhole Inspection Form

Manhole Information

Inspector: BM TT
Date: 4/28/2022
Weather: DRY (NO PRECIPITATION DURING SURVEY)
Street: NORTH STONINGTON ROAD
Location: PRIMARY ARTERIAL ROADS

GIS MH No: 1-229
Type of Manhole: SANITARY SEWER (GRAVITY)
Inspection Status: SURFACE INSPECTION; LEVEL 1 (NO MANHOLE ENTRY)
Rim to Invert (ft): 9.25
Grade to Rim (in): 0

Manhole Infiltration

Surcharge: NO
Infiltration: NO

Number of Holes: 0
Metal Riser: NO

Manhole Characteristics

Location in MH	Mtrl. Code	Infil. Code	Cond. Code	Repair Codes	Comments
Frame/Cover	CAST IRON	STAINS	SOUND	NONE	
Chimney	BRICK	NONE	SOUND	NONE	
Cone	CONCRETE (PRECAST)	NONE	SOUND	NONE	
Wall	CONCRETE (PRECAST)	NONE	SOUND	NONE	
Bench	BRICK	NONE	SOUND	NONE	
Invert/Channel	BRICK	NONE	SOUND	NONE	

Invert Information

Pipe	Direction	Rim to Invert	Pipe Dia. (in)	Pipe Mtrl. Code	Clock Position*	Comments
Pipe 1	OUT	9.25	8	POLY VINYL CHLORIDE	06:00	
Pipe 2						
Pipe 3						
Pipe 4						
Pipe 5						

Additional
Comments

*6:00 is outlet



CDM
Smith

Town of Stonington, Connecticut

Manhole Inspection Form

Manhole Information

Inspector: BH AND TT

Date: 4/28/2022

Weather: DRY (NO PRECIPITATION DURING SURVEY)

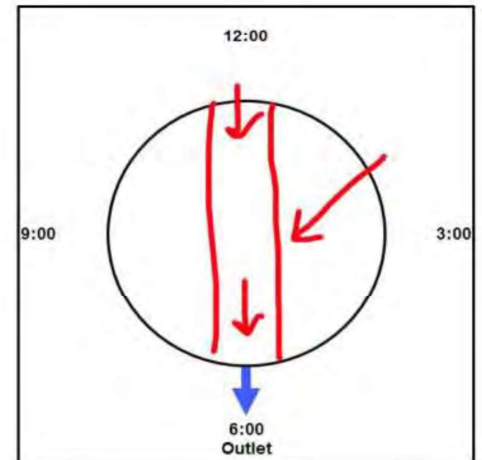
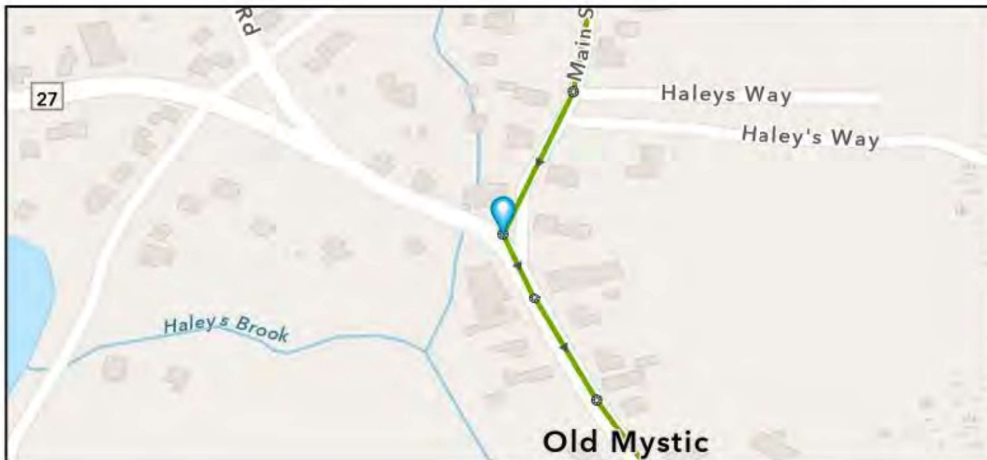
Street: MAIN STREET

GIS MH No: 1-230

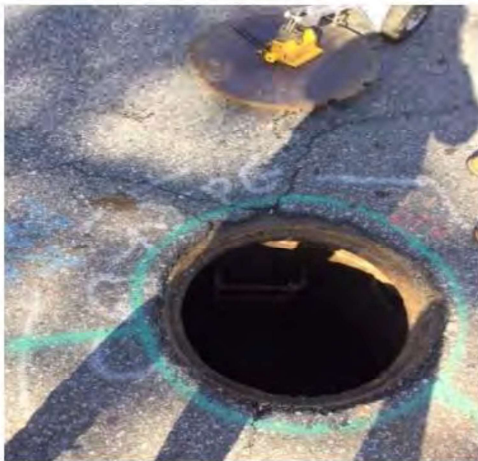
Type of Manhole: SANITARY SEWER (GRAVITY)

Inspection Status: SURFACE INSPECTION: LEVEL 1 (NO MANHOLE ENTRY)

Manhole Location and Configuration



Inspection Photos



**Manhole Inspection Form****Manhole Information****Inspector:** BH AND TT**Date:** 4/28/2022**Weather:** DRY (NO PRECIPITATION DURING SURVEY)**GIS MH No:** 1-230**Type of Manhole:** SANITARY SEWER (GRAVITY)**Inspection Status:** SURFACE INSPECTION: LEVEL 1 (NO MANHOLE ENTRY)**Street:** MAIN STREET**Rim to Invert (ft):** 8**Location:** PRIMARY ARTERIAL ROADS**Grade to Rim (in):** -1**Manhole Infiltration****Surcharge:** NO**Number of Holes:** 0**Infiltration:** YES**Metal Riser:** NO**Manhole Characteristics**

Location in MH	Mtrl. Code	Infil. Code	Cond. Code	Repair Codes	Comments
Frame/Cover	CAST IRON	NONE	SOUND	ADD RISER RING TO FRAME AND CHIMNEY	
Chimney	BRICK	STAINS	DEFECTIVE	LINE MANHOLE	
Cone	CONCRETE (PRECAST)	NONE	SOUND	NONE	
Wall	CONCRETE (PRECAST)	RUNNER	DEFECTIVE	LINE_MANHOLE	RUNNER COMING FROM PATCHED TAP AT 12 O CLOCK
Bench	BRICK	NONE	SOUND	NONE	
Invert/Channel	BRICK	NONE	SOUND	NONE	

Invert Information

Pipe	Direction	Rim to Invert	Pipe Dia. (in)	Pipe Mtrl. Code	Clock Position*	Comments
Pipe 1	OUT	8	24	REINFORCED CONCRETE PIPE	06:00	
Pipe 2	IN	7	8	REINFORCED CONCRETE PIPE	12:00	LOOKS LIKE DROP, BUT ONLY ONE PIPE.
Pipe 3	IN	7.5	8	POLY VINYL CHLORIDE	02:00	
Pipe 4						
Pipe 5						

**Additional
Comments**



Manhole Inspection Form

Manhole Information

Inspector: BH AND TT

Date: 4/28/2022

Weather: DRY (NO PRECIPITATION DURING SURVEY)

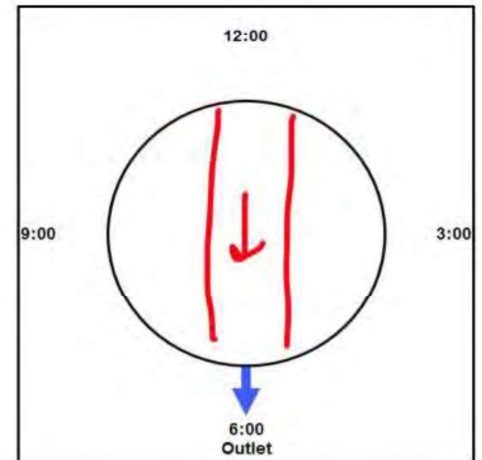
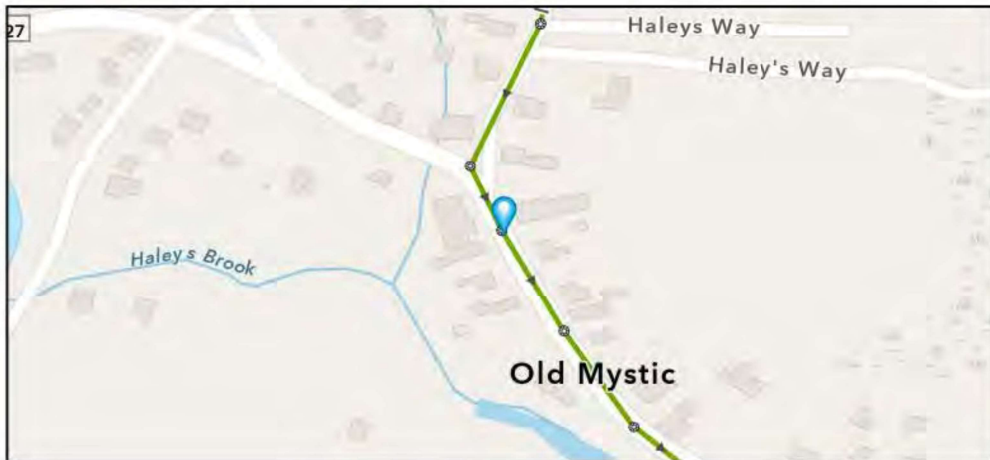
Street: MAIN STREET

GIS MH No: 1-231

Type of Manhole: SANITARY SEWER (GRAVITY)

Inspection Status: SURFACE INSPECTION: LEVEL 1 (NO MANHOLE ENTRY)

Manhole Location and Configuration



Inspection Photos



**Manhole Inspection Form****Manhole Information****Inspector:** BH AND TT**Date:** 4/28/2022**Weather:** DRY (NO PRECIPITATION DURING SURVEY)**Street:** MAIN STREET**Location:** PRIMARY ARTERIAL ROADS**GIS MH No:** 1-231**Type of Manhole:** SANITARY SEWER (GRAVITY)**Inspection Status:** SURFACE INSPECTION: LEVEL 1 (NO MANHOLE ENTRY)**Rim to Invert (ft):** 7**Grade to Rim (in):** -0.5**Manhole Infiltration****Surcharge:** NO**Number of Holes:** 0**Infiltration:** NO**Metal Riser:** YES**Manhole Characteristics**

Location in MH	Mtrl. Code	Infil. Code	Cond. Code	Repair Codes	Comments
Frame/Cover	CAST IRON	NONE	BROKEN	REPLACE FRAME AND COVER	
Chimney	OTHER (DESCRIBE IN DETAILS)	NONE	NOT KNOWN	NONE	NO CHIMNEY
Cone	CONCRETE (PRECAST)	NONE	SOUND	NONE	
Wall	CONCRETE (PRECAST)	NONE	SOUND	NONE	
Bench	BRICK	NONE	SOUND	NONE	
Invert/Channel	BRICK	NONE	SOUND	NONE	

Invert Information

Pipe	Direction	Rim to Invert	Pipe Dia. (in)	Pipe Mtrl. Code	Clock Position*	Comments
Pipe 1	OUT	7	24	REINFORCED CONCRETE PIPE	06:00	
Pipe 2	IN	7	24	REINFORCED CONCRETE PIPE	12:00	
Pipe 3						
Pipe 4						
Pipe 5						

**Additional
Comments**



CDM
Smith

Town of Stonington, Connecticut

Manhole Inspection Form

Manhole Information

Inspector: BM AK

Date: 9/8/2022

Weather: DRY (NO PRECIPITATION DURING SURVEY)

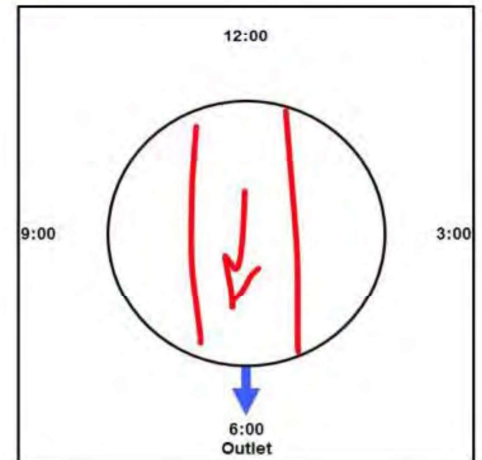
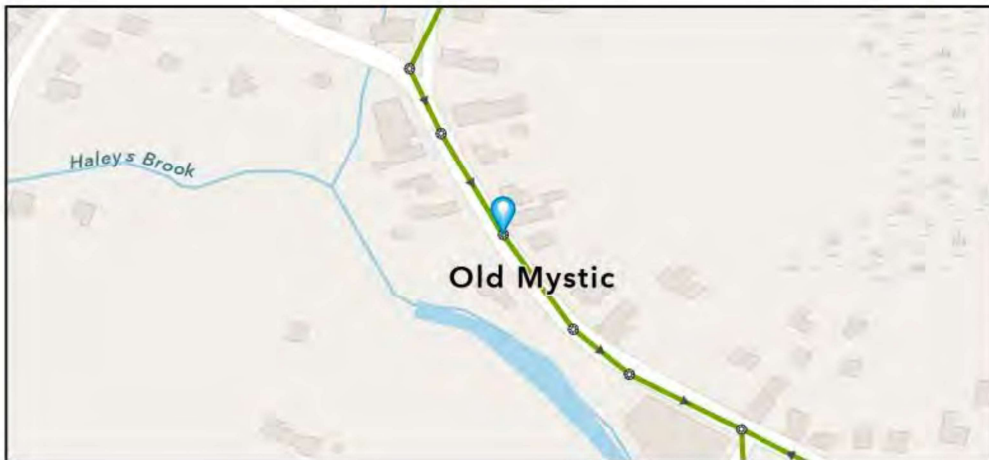
Street: MAIN STREET

GIS MH No: 1-232

Type of Manhole: SANITARY SEWER (GRAVITY)

Inspection Status: SURFACE INSPECTION: LEVEL 1 (NO MANHOLE ENTRY)

Manhole Location and Configuration



Inspection Photos



**Manhole Inspection Form****Manhole Information**

Inspector: BM AK
Date: 9/8/2022
Weather: DRY (NO PRECIPITATION DURING SURVEY)
Street: MAIN STREET
Location: PRIMARY ARTERIAL ROADS

GIS MH No: 1-232
Type of Manhole: SANITARY SEWER (GRAVITY)
Inspection Status: SURFACE INSPECTION: LEVEL 1 (NO MANHOLE ENTRY)
Rim to Invert (ft): 7
Grade to Rim (in): 0

Manhole Infiltration

Surcharge: NO
Infiltration: NO

Number of Holes: 0
Metal Riser: YES

Manhole Characteristics

Location in MH	Mtrl. Code	Infil. Code	Cond. Code	Repair Codes	Comments
Frame/Cover	CAST IRON	NONE	CORRODED	REPLACE FRAME AND COVER	
Chimney	BRICK	NONE	SOUND	NONE	
Cone	OTHER (DESCRIBE IN DETAILS)	NONE	SOUND	NONE	NO CONE
Wall	CONCRETE (PRECAST)	NONE	SOUND	NONE	
Bench	BRICK	NONE	SOUND	NONE	
Invert/Channel	BRICK	NONE	SOUND	NONE	

Invert Information

Pipe	Direction	Rim to Invert	Pipe Dia. (in)	Pipe Mtrl. Code	Clock Position*	Comments
Pipe 1	OUT	7	18	REINFORCED CONCRETE PIPE	06:00	
Pipe 2	IN	7	18	REINFORCED CONCRETE PIPE	12:00	
Pipe 3						
Pipe 4						
Pipe 5						

**Additional
Comments**



Manhole Inspection Form

Manhole Information

Inspector: BM AK

Date: 9/8/2022

Weather: DRY (NO PRECIPITATION DURING SURVEY)

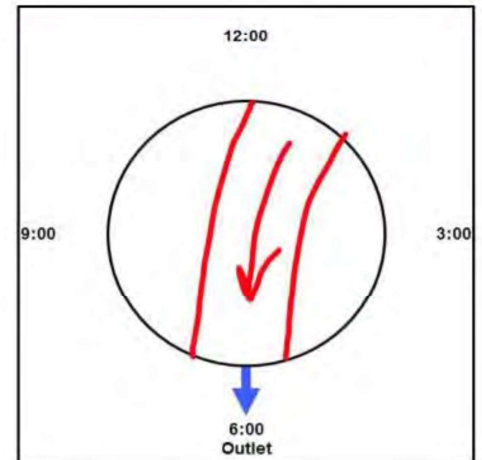
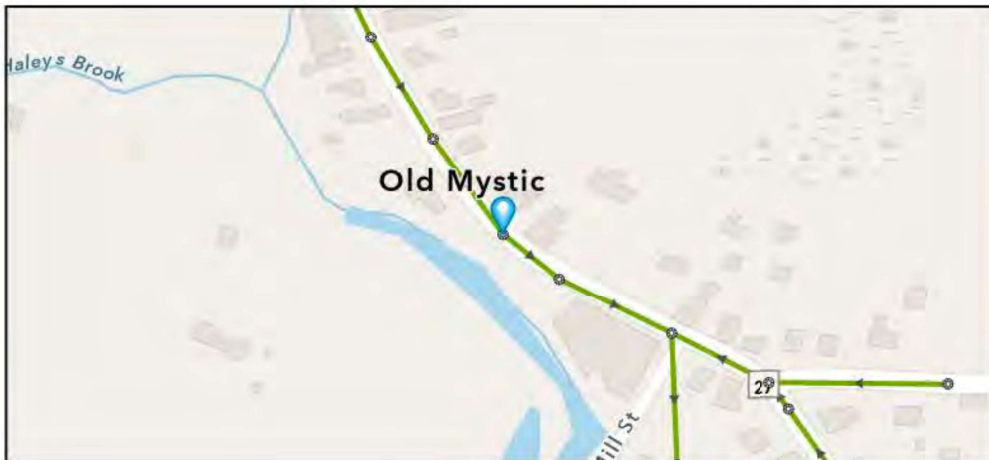
Street: MAIN STREET/ROUTE 27

GIS MH No: 1-233

Type of Manhole: SANITARY SEWER (GRAVITY)

Inspection Status: SURFACE INSPECTION: LEVEL 1 (NO MANHOLE ENTRY)

Manhole Location and Configuration



Inspection Photos





Town of Stonington, Connecticut

Manhole Inspection Form

Manhole Information

Inspector: BM AK
Date: 9/8/2022
Weather: DRY (NO PRECIPITATION DURING SURVEY)
Street: MAIN STREET/ROUTE 27
Location: PRIMARY ARTERIAL ROADS

GIS MH No: 1-233
Type of Manhole: SANITARY SEWER (GRAVITY)
Inspection Status: SURFACE INSPECTION: LEVEL 1 (NO MANHOLE ENTRY)
Rim to Invert (ft): 7.25
Grade to Rim (in): 0

Manhole Infiltration

Surcharge: NO
Infiltration: NO

Number of Holes: 0
Metal Riser: NO

Manhole Characteristics

Location in MH	Mtrl. Code	Infil. Code	Cond. Code	Repair Codes	Comments
Frame/Cover	CAST IRON	NONE	CORRODED	REPLACE FRAME AND COVER	
Chimney	BRICK	NONE	SOUND	NONE	
Cone	CONCRETE (PRECAST)	NONE	SOUND	NONE	
Wall	CONCRETE (PRECAST)	NONE	SOUND	NONE	
Bench	BRICK	NONE	SOUND	NONE	
Invert/Channel	BRICK	NONE	SOUND	NONE	

Invert Information

Pipe	Direction	Rim to Invert	Pipe Dia. (in)	Pipe Mtrl. Code	Clock Position*	Comments
Pipe 1	OUT	7.25	18	REINFORCED CONCRETE PIPE	06:00	
Pipe 2	IN	7.25	18	REINFORCED CONCRETE PIPE	01:00	
Pipe 3						
Pipe 4						
Pipe 5						

Additional
Comments

*6:00 is outlet



CDM
Smith

Town of Stonington, Connecticut

Manhole Inspection Form

Manhole Information

Inspector: BM AK

Date: 9/8/2022

Weather: DRY (NO PRECIPITATION DURING SURVEY)

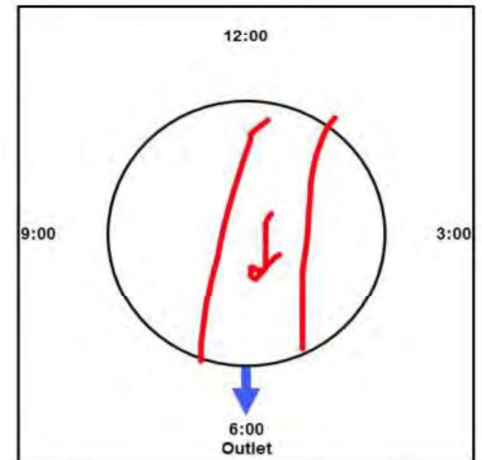
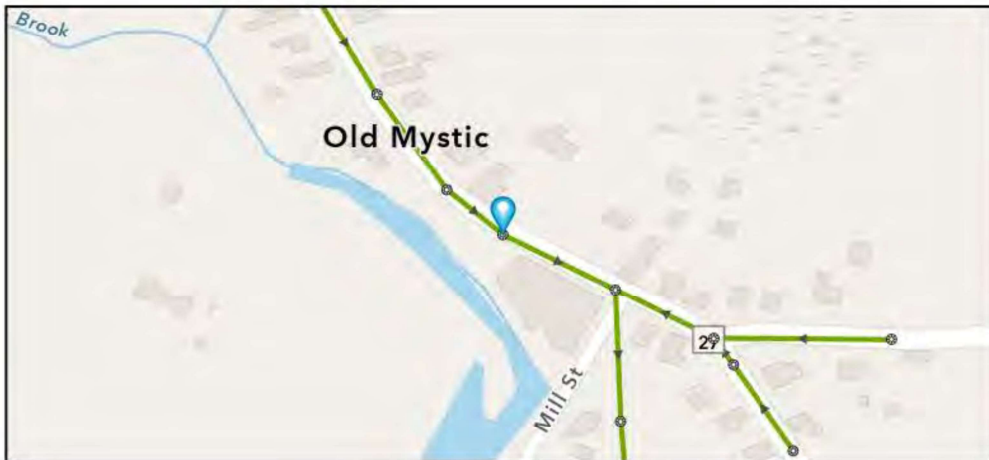
Street: ROUTE 27

GIS MH No: 1-264

Type of Manhole: SANITARY SEWER (GRAVITY)

Inspection Status: SURFACE INSPECTION: LEVEL 1 (NO MANHOLE ENTRY)

Manhole Location and Configuration



Inspection Photos



**Manhole Inspection Form****Manhole Information**

Inspector: BM AK
Date: 9/8/2022
Weather: DRY (NO PRECIPITATION DURING SURVEY)
Street: ROUTE 27
Location: PRIMARY ARTERIAL ROADS

GIS MH No: 1-264
Type of Manhole: SANITARY SEWER (GRAVITY)
Inspection Status: SURFACE INSPECTION: LEVEL 1 (NO MANHOLE ENTRY)
Rim to Invert (ft): 7.25
Grade to Rim (in): 0

Manhole Infiltration

Surcharge: NO
Infiltration: NO

Number of Holes: 0
Metal Riser: NO

Manhole Characteristics

Location in MH	Mtrl. Code	Infil. Code	Cond. Code	Repair Codes	Comments
Frame/Cover	CAST IRON	NONE	CORRODED	REPLACE FRAME AND COVER	
Chimney	CONCRETE (PRECAST)	NONE	SOUND	NONE	
Cone	OTHER (DESCRIBE IN DETAILS)	NONE	SOUND	NONE	NO CONE
Wall	CONCRETE (PRECAST)	NONE	SOUND	NONE	
Bench	BRICK	NONE	SOUND	NONE	
Invert/Channel	BRICK	NONE	SOUND	NONE	

Invert Information

Pipe	Direction	Rim to Invert	Pipe Dia. (in)	Pipe Mtrl. Code	Clock Position*	Comments
Pipe 1	OUT	7.25	18	REINFORCED CONCRETE PIPE	06:00	
Pipe 2	IN	7.25	18	REINFORCED CONCRETE PIPE	01:00	
Pipe 3						
Pipe 4						
Pipe 5						

**Additional
Comments**