



Manhole Inspection Form

Manhole Information

Inspector: BM AK

Date: 9/8/2022

Weather: DRY (NO PRECIPITATION DURING SURVEY)

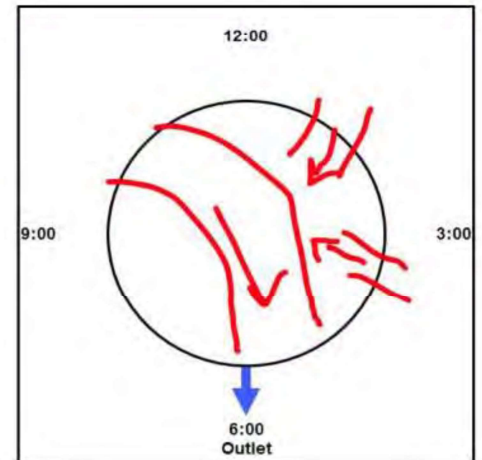
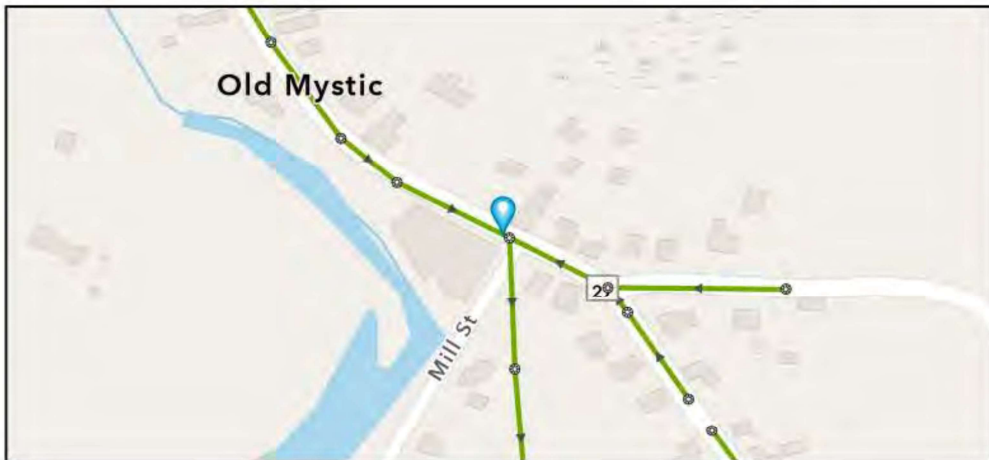
Street: ROUTE 27

GIS MH No: 1-265

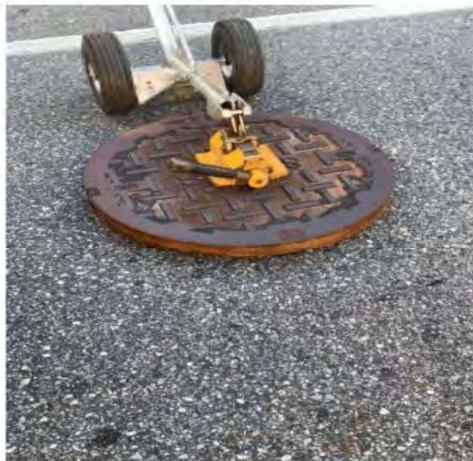
Type of Manhole: SANITARY SEWER (GRAVITY)

Inspection Status: SURFACE INSPECTION: LEVEL 1 (NO MANHOLE ENTRY)

Manhole Location and Configuration



Inspection Photos



**Manhole Inspection Form****Manhole Information**

**Inspector:** BM AK  
**Date:** 9/8/2022  
**Weather:** DRY (NO PRECIPITATION DURING SURVEY)  
**Street:** ROUTE 27  
**Location:** PRIMARY ARTERIAL ROADS

**GIS MH No:** 1-265  
**Type of Manhole:** SANITARY SEWER (GRAVITY)  
**Inspection Status:** SURFACE INSPECTION; LEVEL 1 (NO MANHOLE ENTRY)  
**Rim to Invert (ft):** 8.75  
**Grade to Rim (in):** 0

**Manhole Infiltration**

**Surcharge:** NO  
**Infiltration:** NO

**Number of Holes:** 0  
**Metal Riser:** NO

**Manhole Characteristics**

Location in MH	Mtrl. Code	Infil. Code	Cond. Code	Repair Codes	Comments
Frame/Cover	CAST IRON	NONE	SOUND	NONE	
Chimney	BRICK	NONE	SOUND	NONE	CONCRETE BLOCK AND BRICK
Cone	CONCRETE (PRECAST)	NONE	SOUND	NONE	
Wall	CONCRETE (PRECAST)	NONE	SOUND	NONE	
Bench	BRICK	NONE	SOUND	NONE	
Invert/Channel	BRICK	NONE	SOUND	NONE	

**Invert Information**

Pipe	Direction	Rim to Invert	Pipe Dia. (in)	Pipe Mtrl. Code	Clock Position*	Comments
Pipe 1	OUT	8.75	18	REINFORCED CONCRETE PIPE	06:00	
Pipe 2	IN	8.75	18	REINFORCED CONCRETE PIPE	10:00	
Pipe 3	IN	6.75	6	POLY VINYL CHLORIDE	01:00	
Pipe 4	IN	7.75	8	POLY VINYL CHLORIDE	05:00	
Pipe 5						

**Additional  
Comments**





# Town of Stonington, Connecticut

## Manhole Inspection Form

### Manhole Information

Inspector: BM AND JC

Date: 5/3/2022

Weather: DRY (NO PRECIPITATION DURING SURVEY)

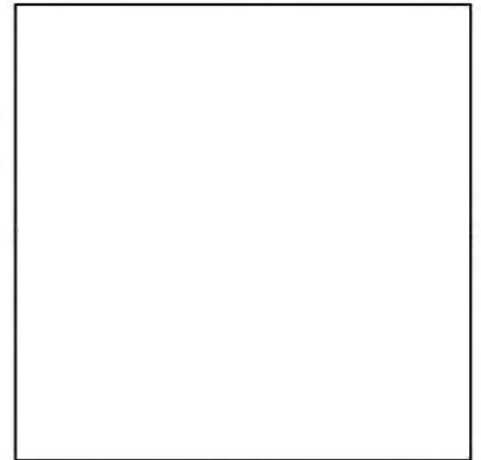
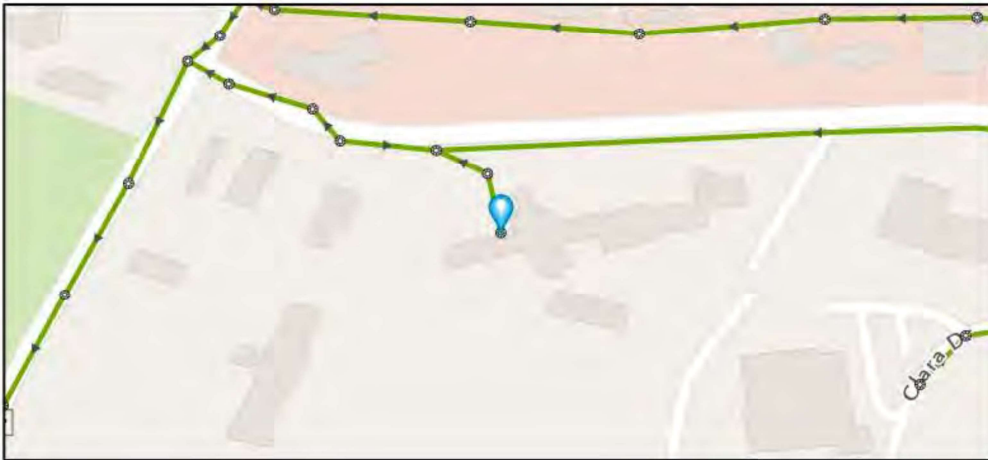
Street: COOGAN BLVD

GIS MH No: 1-285

Type of Manhole:

Inspection Status: NOT FOUND

### Manhole Location and Configuration



### Inspection Photos



**Manhole Inspection Form****Manhole Information**

Inspector: BM AND JC

GIS MH No: 1-285

Date: 5/3/2022

Type of Manhole:

Weather: DRY (NO PRECIPITATION DURING SURVEY)

Inspection Status: NOT FOUND

Street: COOGAN BLVD

Rim to Invert (ft):

Location: PARKING LOT

Grade to Rim (in):

**Manhole Infiltration**

Surcharge:

Number of Holes:

Infiltration:

Metal Riser:

**Manhole Characteristics**

Location in MH	Mtrl. Code	Infil. Code	Cond. Code	Repair Codes	Comments
Frame/Cover					
Chimney					
Cone					
Wall					
Bench					
Invert/Channel					

**Invert Information**

Pipe	Direction	Rim to Invert	Pipe Dia. (in)	Pipe Mtrl. Code	Clock Position*	Comments
Pipe 1						
Pipe 2						
Pipe 3						
Pipe 4						
Pipe 5						

Additional  
Comments





# Town of Stonington, Connecticut

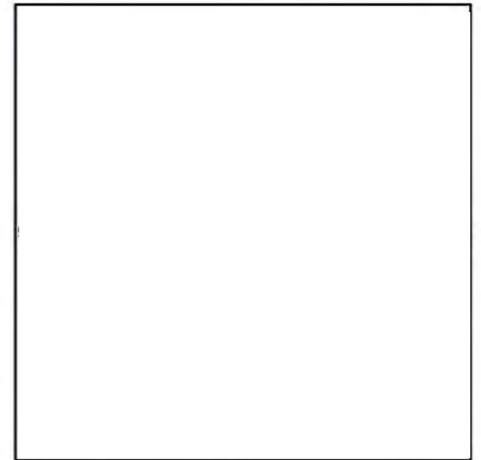
## Manhole Inspection Form

### Manhole Information

**Inspector:** BM AND JC  
**Date:** 5/3/2022  
**Weather:** LIGHT RAIN  
**Street:** COOGAN BLVD

**GIS MH No:** 1-286  
**Type of Manhole:**  
**Inspection Status:** NOT FOUND

### Manhole Location and Configuration



### Inspection Photos





# Town of Stonington, Connecticut

## Manhole Inspection Form

### Manhole Information

Inspector: BM AND JC

Date: 5/3/2022

Weather: LIGHT RAIN

Street: COOGAN BLVD

Location: YARD

GIS MH No: 1-286

Type of Manhole:

Inspection Status: NOT FOUND

Rim to Invert (ft):

Grade to Rim (in):

### Manhole Infiltration

Surcharge:

Infiltration:

Number of Holes:

Metal Riser:

### Manhole Characteristics

Location in MH	Mtrl. Code	Infil. Code	Cond. Code	Repair Codes	Comments
Frame/Cover					
Chimney					
Cone					
Wall					
Bench					
Invert/Channel					

### Invert Information

Pipe	Direction	Rim to Invert	Pipe Dia. (in)	Pipe Mtrl. Code	Clock Position*	Comments
Pipe 1						
Pipe 2						
Pipe 3						
Pipe 4						
Pipe 5						

Additional  
Comments





CDM  
Smith

## Town of Stonington, Connecticut

### Manhole Inspection Form

#### Manhole Information

Inspector: BM AND JC

Date: 5/3/2022

Weather: DRY (NO PRECIPITATION DURING SURVEY)

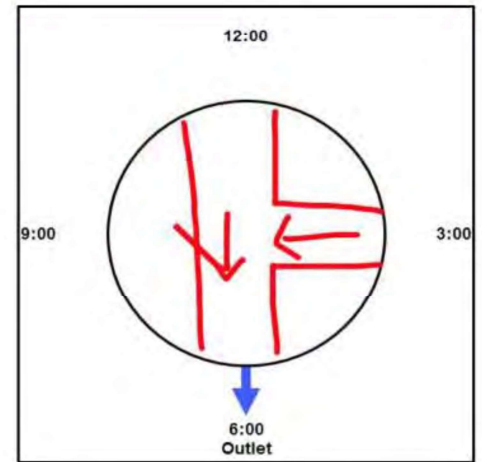
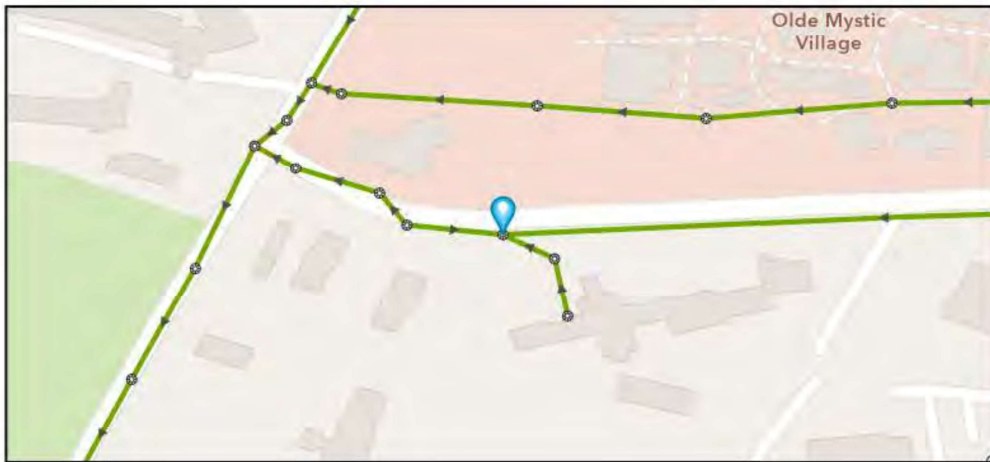
Street: COOGAN BLVD

GIS MH No: 1-287

Type of Manhole: SANITARY SEWER (GRAVITY)

Inspection Status: SURFACE INSPECTION: LEVEL 1 (NO MANHOLE ENTRY)

#### Manhole Location and Configuration



#### Inspection Photos



**Manhole Inspection Form****Manhole Information****Inspector:** BM AND JC**Date:** 5/3/2022**Weather:** DRY (NO PRECIPITATION DURING SURVEY)**GIS MH No:** 1-287**Type of Manhole:** SANITARY SEWER (GRAVITY)**Inspection Status:** SURFACE INSPECTION: LEVEL 1 (NO MANHOLE ENTRY)**Street:** COOGAN BLVD**Location:** SIDEWALK**Rim to Invert (ft):** 7**Grade to Rim (in):** 0**Manhole Infiltration****Surcharge:** NO**Number of Holes:** 0**Infiltration:** NO**Metal Riser:** NO**Manhole Characteristics**

Location in MH	Mtrl. Code	Infil. Code	Cond. Code	Repair Codes	Comments
Frame/Cover	CAST IRON	NONE	CORRODED	REPLACE FRAME AND COVER	
Chimney	OTHER (DESCRIBE IN DETAILS)	NONE	SOUND	NONE	NO CHIMNEY
Cone	CONCRETE (CAST IN PLACE)	NONE	DEFECTIVE	LINE_MANHOLE	
Wall	CONCRETE (CAST IN PLACE)	NONE	DEFECTIVE	LINE_MANHOLE	
Bench	BRICK	NONE	DEFECTIVE	REPAIR_CHANNEL	FLOW DEGRADATION, VERY DIRTY
Invert/Channel	BRICK	NONE	SOUND	NONE	

**Invert Information**

Pipe	Direction	Rim to Invert	Pipe Dia. (in)	Pipe Mtrl. Code	Clock Position*	Comments
Pipe 1	OUT	7	8	VITRIFIED CLAY PIPE	06:00	
Pipe 2	IN	7	8	POLY VINYL CHLORIDE	12:00	
Pipe 3	IN	7	8	VITRIFIED CLAY PIPE	09:00	
Pipe 4						
Pipe 5						

**Additional  
Comments**





# Town of Stonington, Connecticut

## Manhole Inspection Form

### Manhole Information

Inspector: BM AND JC

Date: 5/3/2022

Weather: DRY (NO PRECIPITATION DURING SURVEY)

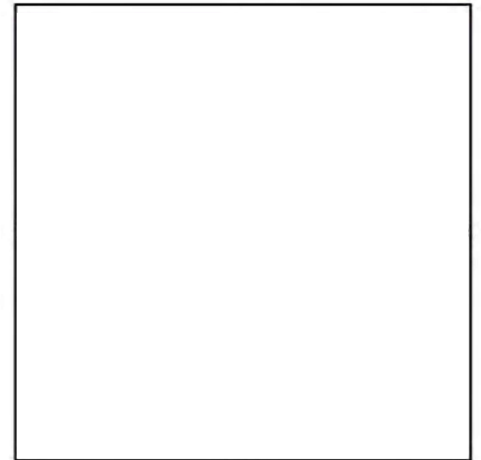
Street: COOGAN BLVD

GIS MH No: 1-288

Type of Manhole:

Inspection Status: NOT FOUND

### Manhole Location and Configuration



### Inspection Photos





# Town of Stonington, Connecticut

## Manhole Inspection Form

### Manhole Information

Inspector: BM AND JC

GIS MH No: 1-288

Date: 5/3/2022

Type of Manhole:

Weather: DRY (NO PRECIPITATION DURING SURVEY)

Inspection Status: NOT FOUND

Street: COOGAN BLVD

Rim to Invert (ft):

Location: YARD

Grade to Rim (in):

### Manhole Infiltration

Surcharge:

Number of Holes:

Infiltration:

Metal Riser:

### Manhole Characteristics

Location in MH	Mtrl. Code	Infil. Code	Cond. Code	Repair Codes	Comments
Frame/Cover					
Chimney					
Cone					
Wall					
Bench					
Invert/Channel					

### Invert Information

Pipe	Direction	Rim to Invert	Pipe Dia. (in)	Pipe Mtrl. Code	Clock Position*	Comments
Pipe 1						
Pipe 2						
Pipe 3						
Pipe 4						
Pipe 5						

Additional  
Comments





CDM  
Smith

## Town of Stonington, Connecticut

### Manhole Inspection Form

#### Manhole Information

Inspector: JC/BM

Date: 5/12/2022

Weather: DRY (NO PRECIPITATION DURING SURVEY)

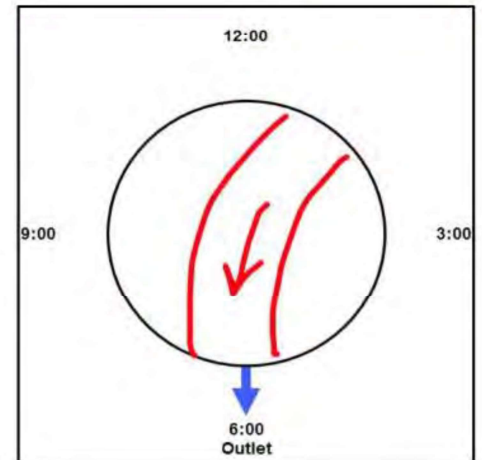
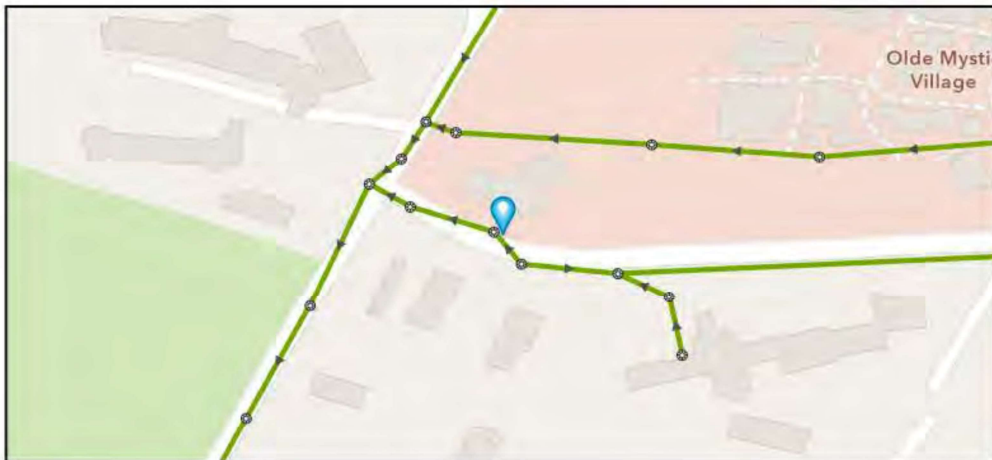
Street: COOGAN BLVD

GIS MH No: 1-289

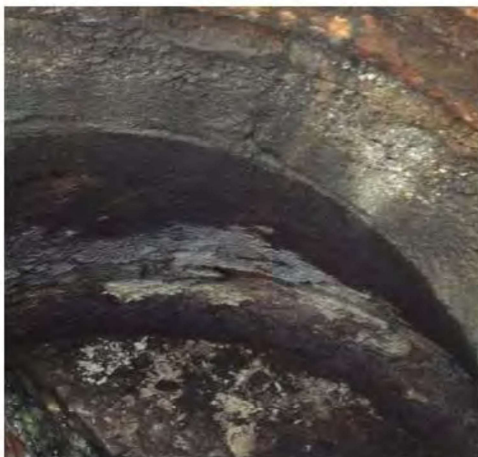
Type of Manhole: SANITARY SEWER (GRAVITY)

Inspection Status: SURFACE INSPECTION: LEVEL 1 (NO MANHOLE ENTRY)

#### Manhole Location and Configuration



#### Inspection Photos



**Manhole Inspection Form****Manhole Information****Inspector:** JC/BM**Date:** 5/12/2022**Weather:** DRY (NO PRECIPITATION DURING SURVEY)**GIS MH No:** 1-289**Type of Manhole:** SANITARY SEWER (GRAVITY)**Inspection Status:** SURFACE INSPECTION: LEVEL 1 (NO MANHOLE ENTRY)**Street:** COOGAN BLVD**Location:** SECONDARY ROADS**Rim to Invert (ft):** 6**Grade to Rim (in):** 0**Manhole Infiltration****Surcharge:** NO**Infiltration:** NO**Number of Holes:** 0**Metal Riser:** YES**Manhole Characteristics**

Location in MH	Mtrl. Code	Infil. Code	Cond. Code	Repair Codes	Comments
Frame/Cover	CAST IRON	STAINS	BROKEN	REPLACE FRAME AND COVER	
Chimney	BRICK	NONE	DEFECTIVE	LINE MANHOLE	CORRODED
Cone	CONCRETE (PRECAST)	NONE	DEFECTIVE	LINE_MANHOLE	CORRODED
Wall	CONCRETE (PRECAST)	NONE	DEFECTIVE	LINE_MANHOLE	CORRODED
Bench	BRICK	NONE	SOUND	NONE	
Invert/Channel	BRICK	NONE	SOUND	NONE	

**Invert Information**

Pipe	Direction	Rim to Invert	Pipe Dia. (in)	Pipe Mtrl. Code	Clock Position*	Comments
Pipe 1	OUT	6	8	VITRIFIED CLAY PIPE	06:00	
Pipe 2	IN	6	8	VITRIFIED CLAY PIPE	01:00	
Pipe 3						
Pipe 4						
Pipe 5						

**Additional  
Comments**





Manhole Inspection Form

Manhole Information

Inspector: JC/BM

Date: 5/12/2022

Weather: DRY (NO PRECIPITATION DURING SURVEY)

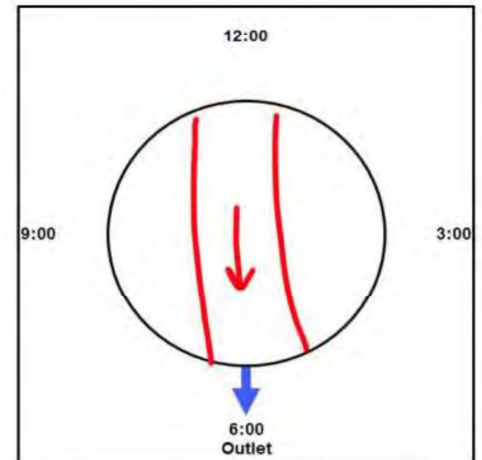
Street: COOGAN BLVD

GIS MH No: 1-290

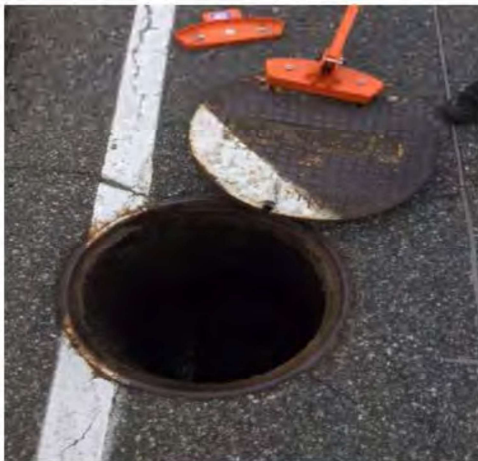
Type of Manhole: SANITARY SEWER (GRAVITY)

Inspection Status: SURFACE INSPECTION: LEVEL 1 (NO MANHOLE ENTRY)

Manhole Location and Configuration



Inspection Photos







# Town of Stonington, Connecticut

## Manhole Inspection Form

### Manhole Information

Inspector: JC/BM  
Date: 5/12/2022  
Weather: DRY (NO PRECIPITATION DURING SURVEY)  
Street: COOGAN BLVD  
Location: SECONDARY ROADS

GIS MH No: 1-290  
Type of Manhole: SANITARY SEWER (GRAVITY)  
Inspection Status: SURFACE INSPECTION: LEVEL 1 (NO MANHOLE ENTRY)  
Rim to Invert (ft): 6  
Grade to Rim (in): 0

### Manhole Infiltration

Surcharge: NO  
Infiltration: NO

Number of Holes: 0  
Metal Riser: YES

### Manhole Characteristics

Location in MH	Mtrl. Code	Infil. Code	Cond. Code	Repair Codes	Comments
Frame/Cover	CAST IRON	STAINS	BROKEN	REPLACE FRAME AND COVER	
Chimney	BRICK	NONE	SOUND	NONE	
Cone	CONCRETE (PRECAST)	NONE	SOUND	NONE	
Wall	CONCRETE (PRECAST)	NONE	SOUND	NONE	
Bench	BRICK	NONE	DEFECTIVE	OTHER	REPAIR BENCH, BRICKS STARTING TO BE DISPLACED
Invert/Channel	BRICK	NONE	SOUND	NONE	

### Invert Information

Pipe	Direction	Rim to Invert	Pipe Dia. (in)	Pipe Mtrl. Code	Clock Position*	Comments
Pipe 1	OUT	6	8	VITRIFIED CLAY PIPE	06:00	
Pipe 2	IN	6	8	VITRIFIED CLAY PIPE	12:00	
Pipe 3						
Pipe 4						
Pipe 5						

Additional  
Comments

\*6:00 is outlet



**CDM  
Smith**

## Town of Stonington, Connecticut

### Manhole Inspection Form

#### Manhole Information

**Inspector:** BM AND JC

**Date:** 5/4/2022

**Weather:** LIGHT RAIN

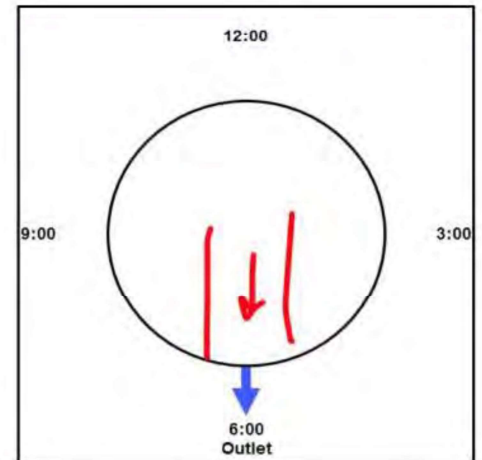
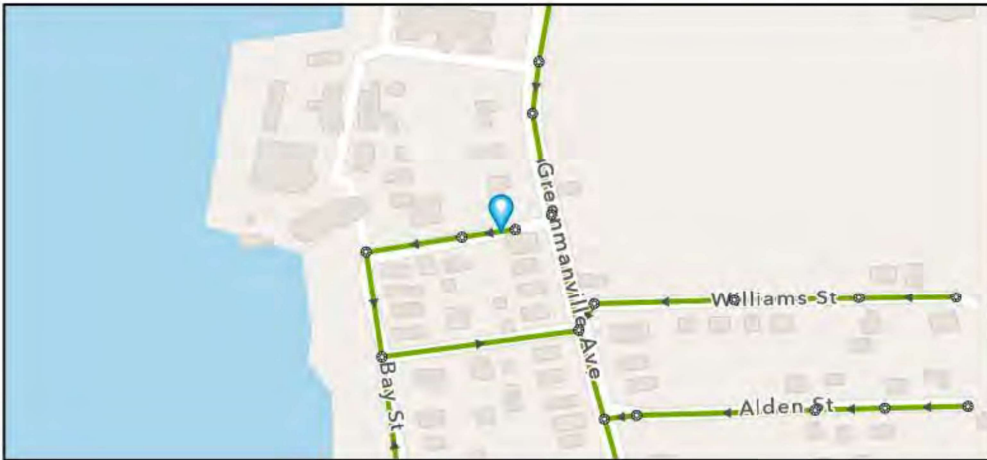
**Street:** 2 ISHAM STREET

**GIS MH No:** 1-295

**Type of Manhole:** SANITARY SEWER (GRAVITY)

**Inspection Status:** SURFACE INSPECTION: LEVEL 1 (NO MANHOLE ENTRY)

#### Manhole Location and Configuration



#### Inspection Photos







# Town of Stonington, Connecticut

## Manhole Inspection Form

### Manhole Information

Inspector: BM AND JC

Date: 5/4/2022

Weather: LIGHT RAIN

Street: 2 ISHAM STREET

Location: LOCAL RURAL STREETS

GIS MH No: 1-295

Type of Manhole: SANITARY SEWER (GRAVITY)

Inspection Status: SURFACE INSPECTION: LEVEL 1 (NO MANHOLE ENTRY)

Rim to Invert (ft): 7.25

Grade to Rim (in): 0

### Manhole Infiltration

Surcharge: NO

Infiltration: YES

Number of Holes: 1

Metal Riser: NO

### Manhole Characteristics

Location in MH	Mtrl. Code	Infil. Code	Cond. Code	Repair Codes	Comments
Frame/Cover	CAST IRON	NONE	SOUND	NONE	
Chimney	CONCRETE BLOCK	NONE	SOUND	NONE	
Cone	CONCRETE (PRECAST)	NONE	SOUND	NONE	
Wall	CONCRETE (PRECAST)	STAINS	DEFECTIVE	LINE_MANHOLE	CRACK IN WALL AT 3:00
Bench	BRICK	NONE	SOUND	NONE	
Invert/Channel	BRICK	NONE	SOUND	NONE	

### Invert Information

Pipe	Direction	Rim to Invert	Pipe Dia. (in)	Pipe Mtrl. Code	Clock Position*	Comments
Pipe 1	OUT	7.25	8	VITRIFIED CLAY PIPE	06:00	
Pipe 2						
Pipe 3						
Pipe 4						
Pipe 5						

Additional  
Comments

\*6:00 is outlet





CDM  
Smith

## Town of Stonington, Connecticut

### Manhole Inspection Form

#### Manhole Information

Inspector: BM/AJC

Date: 5/12/2022

Weather: DRY (NO PRECIPITATION DURING SURVEY)

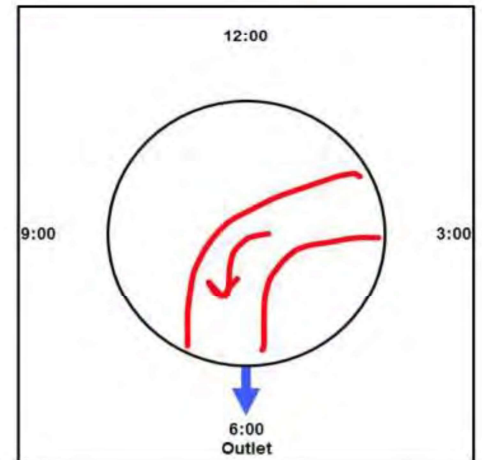
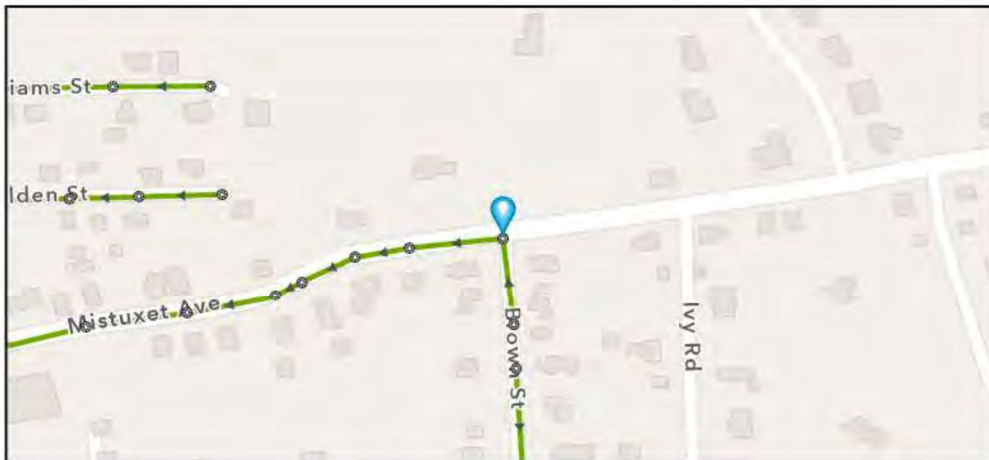
Street: MISTUXET AVE

GIS MH No: 1-296

Type of Manhole: SANITARY SEWER (GRAVITY)

Inspection Status: SURFACE INSPECTION: LEVEL 1 (NO MANHOLE ENTRY)

#### Manhole Location and Configuration



#### Inspection Photos





# Town of Stonington, Connecticut

## Manhole Inspection Form

### Manhole Information

Inspector: BM/AJC  
Date: 5/12/2022  
Weather: DRY (NO PRECIPITATION DURING SURVEY)  
Street: MISTUXET AVE  
Location: SECONDARY ROADS

GIS MH No: 1-296  
Type of Manhole: SANITARY SEWER (GRAVITY)  
Inspection Status: SURFACE INSPECTION: LEVEL 1 (NO MANHOLE ENTRY)  
Rim to Invert (ft): 7.5  
Grade to Rim (in): 0

### Manhole Infiltration

Surcharge: NO  
Infiltration: NO

Number of Holes: 0  
Metal Riser: YES

### Manhole Characteristics

Location in MH	Mtrl. Code	Infil. Code	Cond. Code	Repair Codes	Comments
Frame/Cover	CAST IRON	STAINS	SOUND	NONE	
Chimney	BRICK	NONE	DEFECTIVE	REBUILD TOP, REPLACE FRAME AND CHIMNEY	REBUILD CHIMNEY, MATERIAL STARTING TO BE DISPLACED
Cone	CONCRETE (PRECAST)	NONE	SOUND	NONE	
Wall	CONCRETE (PRECAST)	NONE	SOUND	NONE	
Bench	BRICK	NONE	SOUND	NONE	
Invert/Channel	BRICK	NONE	DEFECTIVE	CLEAN	BRICK AND DEBRIS IN CHANNEL COULD BLOCK FLOW

### Invert Information

Pipe	Direction	Rim to Invert	Pipe Dia. (in)	Pipe Mtrl. Code	Clock Position*	Comments
Pipe 1	OUT	7.5	8	ASBESTOS CONCRETE	06:00	
Pipe 2	IN	7.5	8	ASBESTOS CONCRETE	03:00	
Pipe 3						
Pipe 4						
Pipe 5						

Additional  
Comments

\*6:00 is outlet





CDM  
Smith

## Town of Stonington, Connecticut

### Manhole Inspection Form

#### Manhole Information

Inspector: BM/JC

Date: 5/12/2022

Weather: DRY (NO PRECIPITATION DURING SURVEY)

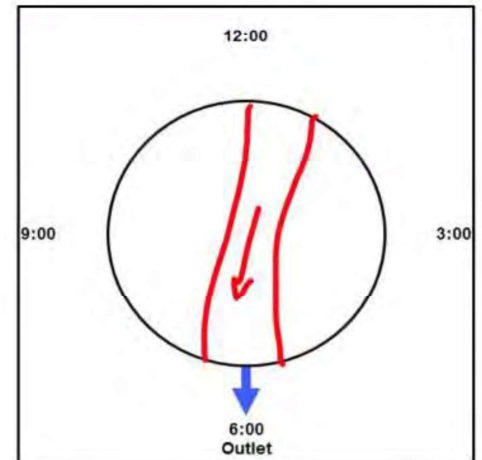
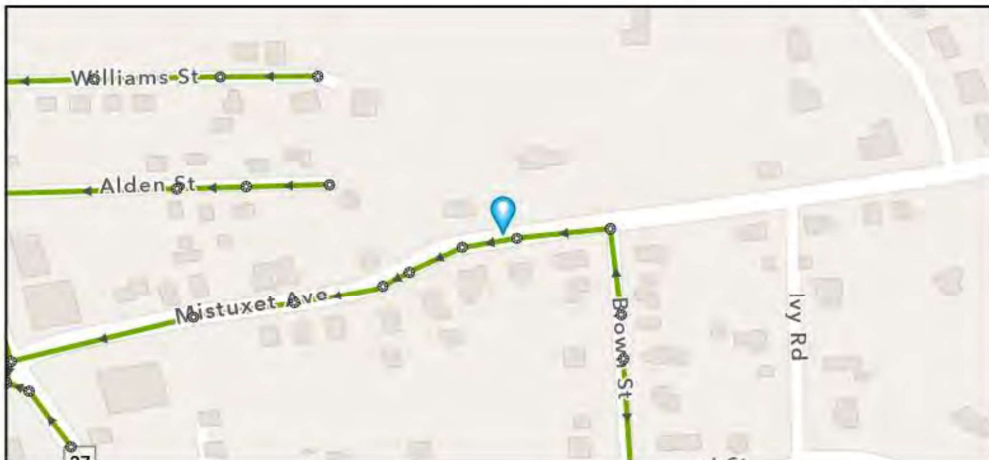
Street: 34 MISTUXET AVE

GIS MH No: 1-297

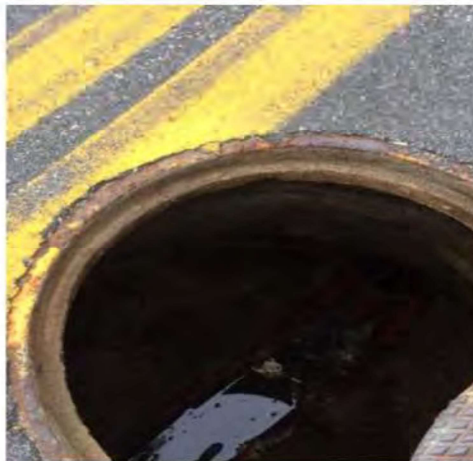
Type of Manhole: SANITARY SEWER (GRAVITY)

Inspection Status: SURFACE INSPECTION: LEVEL 1 (NO MANHOLE ENTRY)

#### Manhole Location and Configuration



#### Inspection Photos







# Town of Stonington, Connecticut

## Manhole Inspection Form

### Manhole Information

Inspector: BM/JC GIS MH No: 1-297  
Date: 5/12/2022 Type of Manhole: SANITARY SEWER (GRAVITY)  
Weather: DRY (NO PRECIPITATION DURING SURVEY) Inspection Status: SURFACE INSPECTION: LEVEL 1 (NO MANHOLE ENTRY)  
Street: 34 MISTUXET AVE Rim to Invert (ft): 4  
Location: SECONDARY ROADS Grade to Rim (in): 0

### Manhole Infiltration

Surcharge: NO Number of Holes: 0  
Infiltration: NO Metal Riser: NO

### Manhole Characteristics

Location in MH	Mtrl. Code	Infil. Code	Cond. Code	Repair Codes	Comments
Frame/Cover	CAST IRON	NONE	CORRODED	REPLACE FRAME AND COVER	
Chimney	BRICK	NONE	SOUND	NONE	
Cone	CONCRETE BLOCK	NONE	SOUND	NONE	
Wall	CONCRETE BLOCK	NONE	SOUND	NONE	
Bench	BRICK	NONE	SOUND	CLEAN	LOTS OF SEDIMENT
Invert/Channel	BRICK	NONE	SOUND	CLEAN	

### Invert Information

Pipe	Direction	Rim to Invert	Pipe Dia. (in)	Pipe Mtrl. Code	Clock Position*	Comments
Pipe 1	OUT	4	8	ASBESTOS CONCRETE	06:00	
Pipe 2	IN	4	8	ASBESTOS CONCRETE	01:00	
Pipe 3						
Pipe 4						
Pipe 5						

Additional  
Comments

\*6:00 is outlet



CDM  
Smith

## Town of Stonington, Connecticut

### Manhole Inspection Form

#### Manhole Information

Inspector: JC/BM

Date: 5/12/2022

Weather: DRY (NO PRECIPITATION DURING SURVEY)

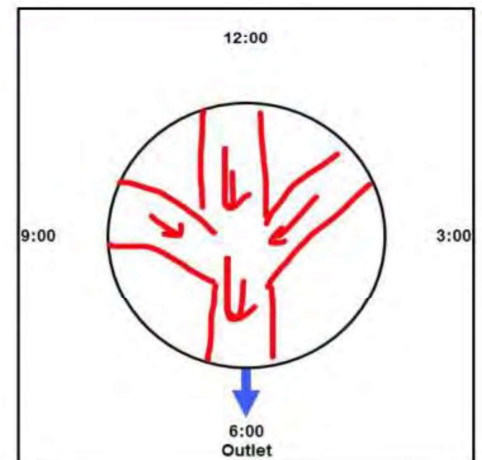
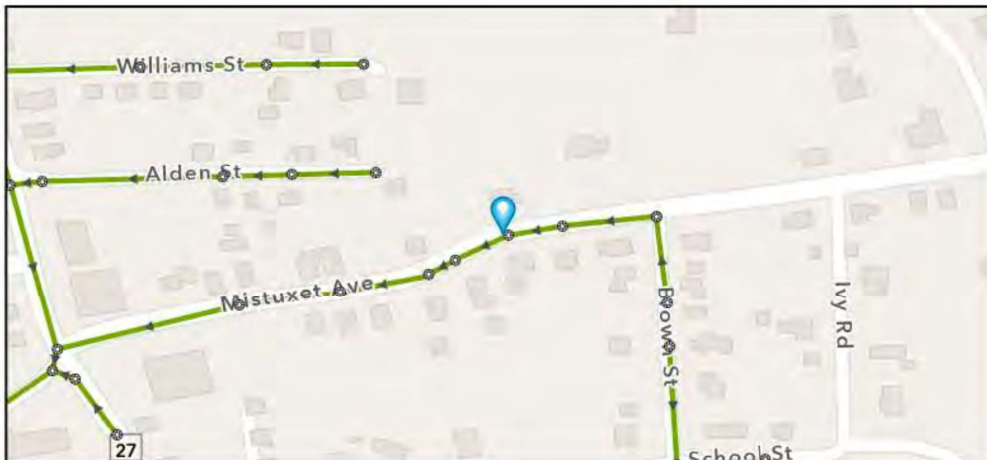
Street: 30 MISTUXET AVE

GIS MH No: 1-298

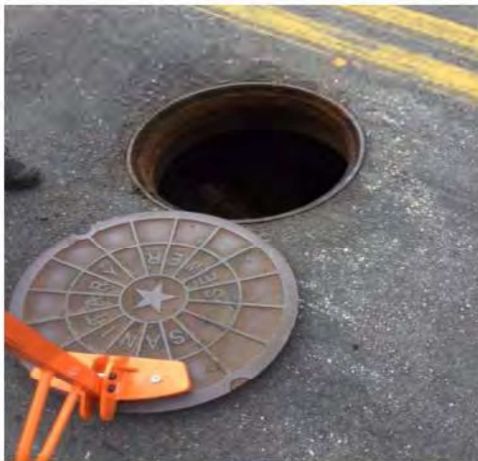
Type of Manhole: SANITARY SEWER (GRAVITY)

Inspection Status: SURFACE INSPECTION: LEVEL 1 (NO MANHOLE ENTRY)

#### Manhole Location and Configuration



#### Inspection Photos







# Town of Stonington, Connecticut

## Manhole Inspection Form

### Manhole Information

Inspector: JC/BM GIS MH No: 1-298  
Date: 5/12/2022 Type of Manhole: SANITARY SEWER (GRAVITY)  
Weather: DRY (NO PRECIPITATION DURING SURVEY) Inspection Status: SURFACE INSPECTION: LEVEL 1 (NO MANHOLE ENTRY)  
Street: 30 MISTUXET AVE Rim to Invert (ft): 4.25  
Location: SECONDARY ROADS Grade to Rim (in): 0

### Manhole Infiltration

Surcharge: NO Number of Holes: 0  
Infiltration: NO Metal Riser: YES

### Manhole Characteristics

Location in MH	Mtrl. Code	Infil. Code	Cond. Code	Repair Codes	Comments
Frame/Cover	CAST IRON	STAINS	SOUND	NONE	
Chimney	CONCRETE BLOCK	NONE	SOUND	NONE	
Cone	CONCRETE (PRECAST)	NONE	SOUND	NONE	
Wall	CONCRETE (PRECAST)	NONE	SOUND	NONE	
Bench	BRICK	NONE	SOUND	NONE	
Invert/Channel	BRICK	NONE	SOUND	NONE	

### Invert Information

Pipe	Direction	Rim to Invert	Pipe Dia. (in)	Pipe Mtrl. Code	Clock Position*	Comments
Pipe 1	OUT	4.25	8	ASBESTOS CONCRETE	06:00	
Pipe 2	IN	4.25	4	ASBESTOS CONCRETE	10:00	LATERAL
Pipe 3	IN	2.75	8	ASBESTOS CONCRETE	01:00	
Pipe 4	IN	4.25	4	ASBESTOS CONCRETE	02:00	LATERAL
Pipe 5						

Additional  
Comments

\*6:00 is outlet





CDM  
Smith

# Town of Stonington, Connecticut

## Manhole Inspection Form

### Manhole Information

Inspector: JC/BM

Date: 5/12/2022

Weather: DRY (NO PRECIPITATION DURING SURVEY)

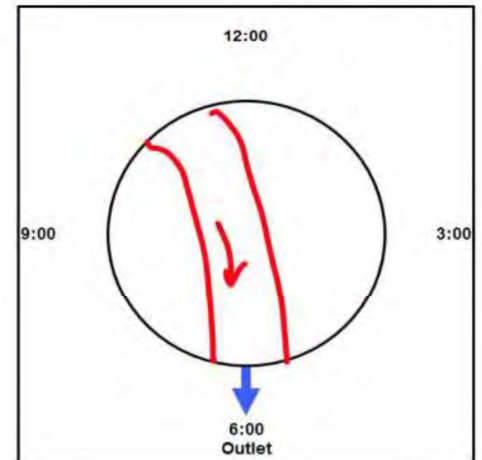
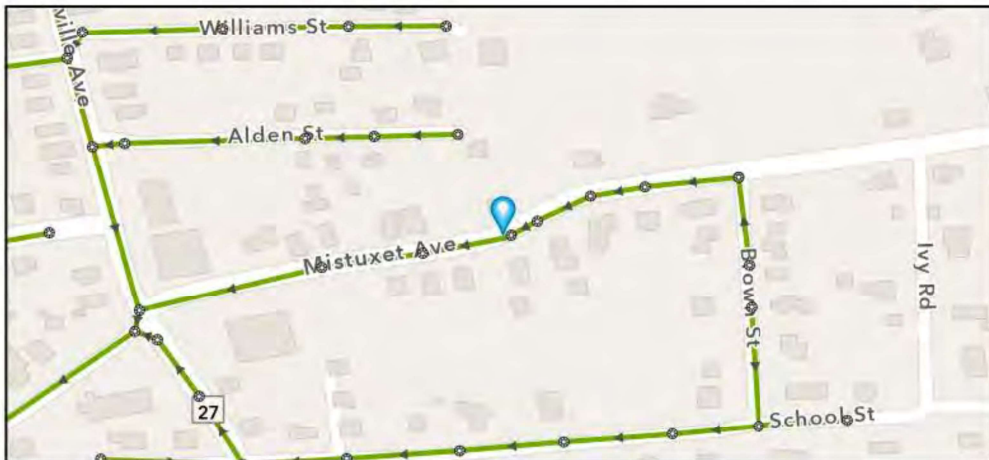
Street: 24 MISTUXET AVE

GIS MH No: 1-299

Type of Manhole: SANITARY SEWER (GRAVITY)

Inspection Status: SURFACE INSPECTION: LEVEL 1 (NO MANHOLE ENTRY)

### Manhole Location and Configuration



### Inspection Photos



**Manhole Inspection Form****Manhole Information****Inspector:** JC/BM**Date:** 5/12/2022**Weather:** DRY (NO PRECIPITATION DURING SURVEY)**GIS MH No:** 1-299**Type of Manhole:** SANITARY SEWER (GRAVITY)**Inspection Status:** SURFACE INSPECTION: LEVEL 1 (NO MANHOLE ENTRY)**Street:** 24 MISTUXET AVE**Location:** PRIMARY ARTERIAL ROADS**Rim to Invert (ft):** 10.75**Grade to Rim (in):** 0**Manhole Infiltration****Surcharge:** NO**Number of Holes:** 0**Infiltration:** NO**Metal Riser:** YES**Manhole Characteristics**

Location in MH	Mtrl. Code	Infil. Code	Cond. Code	Repair Codes	Comments
Frame/Cover	CAST IRON	WEEPER	SOUND	NONE	
Chimney	BRICK	NONE	DEFECTIVE	REBUILD TOP, REPLACE FRAME AND CHIMNEY	CHIKNEY MATERIAL BEGINNING TO BE DISPLACED.
Cone	CONCRETE (PRECAST)	NONE	SOUND	NONE	
Wall	CONCRETE (PRECAST)	NONE	SOUND	NONE	
Bench	BRICK	NONE	SOUND	NONE	
Invert/Channel	BRICK	NONE	SOUND	NONE	

**Invert Information**

Pipe	Direction	Rim to Invert	Pipe Dia. (in)	Pipe Mtrl. Code	Clock Position*	Comments
Pipe 1	OUT	10.75	8	ASBESTOS CONCRETE	06:00	
Pipe 2	IN	10.75	8	ASBESTOS CONCRETE	11:00	
Pipe 3						
Pipe 4						
Pipe 5						

**Additional  
Comments**





CDM  
Smith

# Town of Stonington, Connecticut

## Manhole Inspection Form

### Manhole Information

Inspector: JC/BM

Date: 5/12/2022

Weather: DRY (NO PRECIPITATION DURING SURVEY)

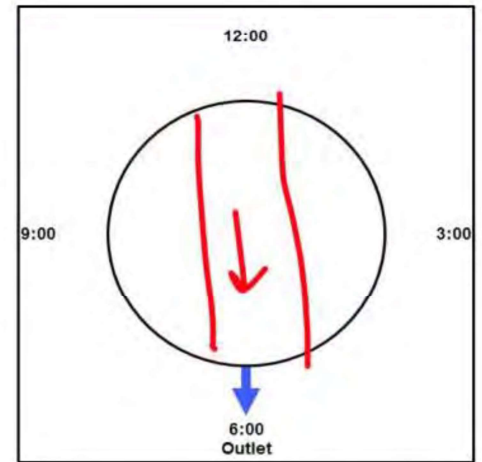
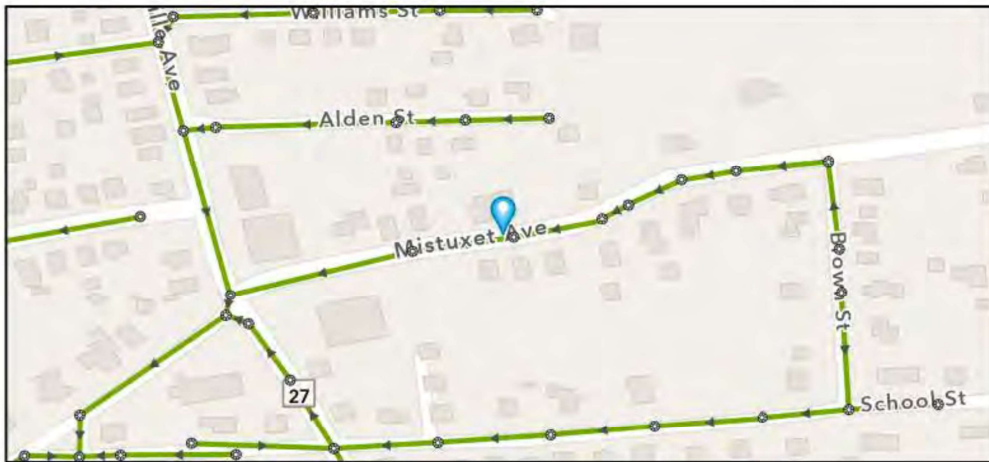
Street: 19 MISTUXET AVE

GIS MH No: 1-300

Type of Manhole: SANITARY SEWER (GRAVITY)

Inspection Status: SURFACE INSPECTION: LEVEL 1 (NO MANHOLE ENTRY)

### Manhole Location and Configuration



### Inspection Photos





# Town of Stonington, Connecticut

## Manhole Inspection Form

### Manhole Information

Inspector: JC/BM GIS MH No: 1-300  
Date: 5/12/2022 Type of Manhole: SANITARY SEWER (GRAVITY)  
Weather: DRY (NO PRECIPITATION DURING SURVEY) Inspection Status: SURFACE INSPECTION: LEVEL 1 (NO MANHOLE ENTRY)  
Street: 19 MISTUXET AVE Rim to Invert (ft): 10.5  
Location: SECONDARY ROADS Grade to Rim (in): 0

### Manhole Infiltration

Surcharge: NO Number of Holes: 0  
Infiltration: NO Metal Riser: YES

### Manhole Characteristics

Location in MH	Mtrl. Code	Infil. Code	Cond. Code	Repair Codes	Comments
Frame/Cover	CAST IRON	WEEPER	SOUND	NONE	
Chimney	BRICK	NONE	DEFECTIVE	REBUILD TOP, REPLACE FRAME AND CHIMNEY	MATERIAL DEGRADING/COMING OUT FROM CHIMNEY
Cone	CONCRETE (PRECAST)	NONE	SOUND	NONE	
Wall	CONCRETE (PRECAST)	NONE	SOUND	NONE	
Bench	BRICK	NONE	SOUND	NONE	
Invert/Channel	BRICK	NONE	SOUND	NONE	

### Invert Information

Pipe	Direction	Rim to Invert	Pipe Dia. (in)	Pipe Mtrl. Code	Clock Position*	Comments
Pipe 1	OUT	10.5	8	ASBESTOS CONCRETE	06:00	
Pipe 2	IN	10.5	8	ASBESTOS CONCRETE	12:00	
Pipe 3						
Pipe 4						
Pipe 5						

Additional  
Comments

\*6:00 is outlet





CDM  
Smith

# Town of Stonington, Connecticut

## Manhole Inspection Form

### Manhole Information

Inspector: BM/JC

Date: 5/18/2022

Weather: DRY (NO PRECIPITATION DURING SURVEY)

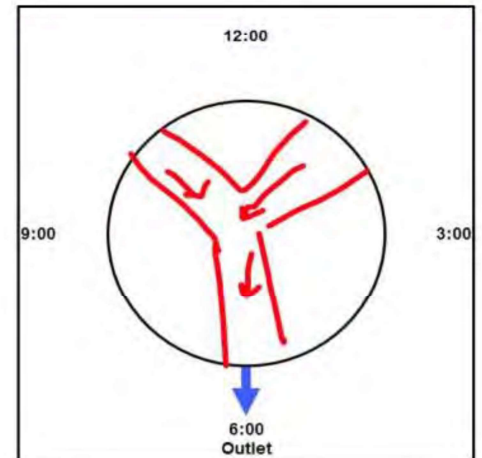
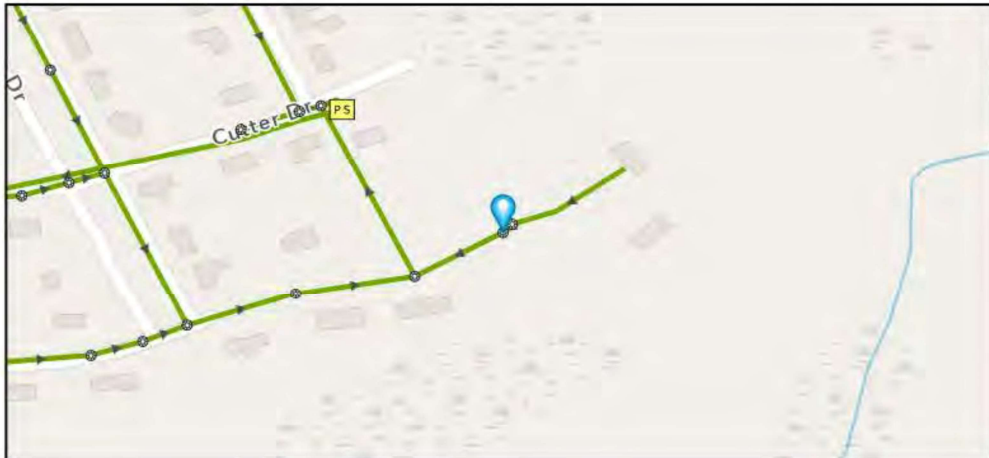
Street: WHALERS DRIVE

GIS MH No: 1-301

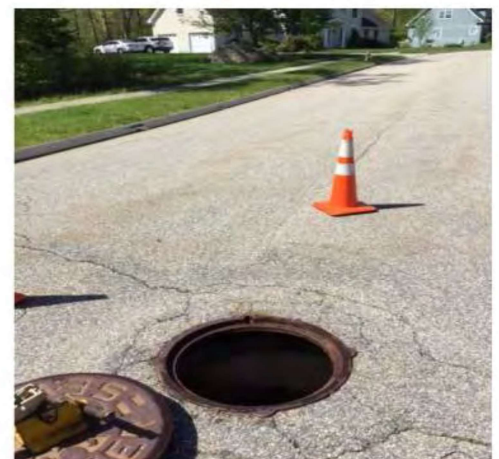
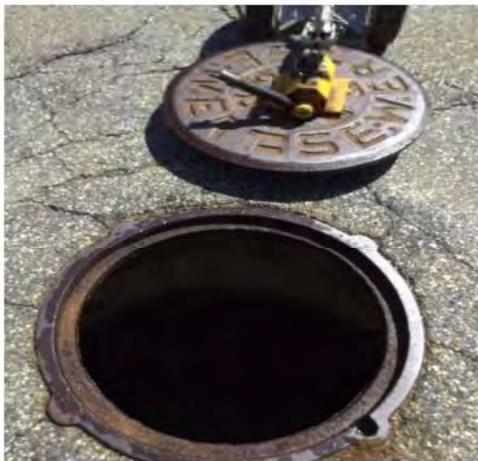
Type of Manhole: SANITARY SEWER (GRAVITY)

Inspection Status: SURFACE INSPECTION: LEVEL 1 (NO MANHOLE ENTRY)

### Manhole Location and Configuration



### Inspection Photos



**Manhole Inspection Form****Manhole Information**

**Inspector:** BM/JC **GIS MH No:** 1-301  
**Date:** 5/18/2022 **Type of Manhole:** SANITARY SEWER (GRAVITY)  
**Weather:** DRY (NO PRECIPITATION DURING SURVEY) **Inspection Status:** SURFACE INSPECTION: LEVEL 1 (NO MANHOLE ENTRY)  
**Street:** WHALERS DRIVE **Rim to Invert (ft):** 4.5  
**Location:** LOCAL RURAL STREETS **Grade to Rim (in):** 0

**Manhole Infiltration**

**Surcharge:** NO **Number of Holes:** 0  
**Infiltration:** NO **Metal Riser:** NO

**Manhole Characteristics**

Location in MH	Mtrl. Code	Infil. Code	Cond. Code	Repair Codes	Comments
Frame/Cover	CAST IRON	WEEPER	SOUND	REPLACE FRAME AND COVER	
Chimney	CONCRETE (PRECAST)	NONE	SOUND	NONE	
Cone	CONCRETE (PRECAST)	NONE	SOUND	NONE	
Wall	CONCRETE (PRECAST)	NONE	SOUND	NONE	
Bench	BRICK	NONE	SOUND	NONE	
Invert/Channel	BRICK	NONE	SOUND	NONE	

**Invert Information**

Pipe	Direction	Rim to Invert	Pipe Dia. (in)	Pipe Mtrl. Code	Clock Position*	Comments
Pipe 1	OUT	4.5	8	POLY VINYL CHLORIDE	06:00	
Pipe 2	IN	4.5	2	POLY VINYL CHLORIDE	11:00	LATERAL
Pipe 3	IN	4.5	2	POLY VINYL CHLORIDE	01:00	LATERAL
Pipe 4						
Pipe 5						

Additional  
Comments





**CDM  
Smith**

## Town of Stonington, Connecticut

### Manhole Inspection Form

#### Manhole Information

**Inspector:** BM AND JC

**Date:** 5/3/2022

**Weather:** DRY (NO PRECIPITATION DURING SURVEY)

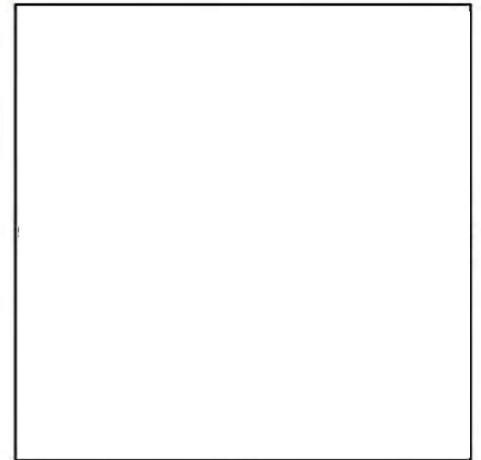
**Street:** ROSSIE

**GIS MH No:** 1-302

**Type of Manhole:**

**Inspection Status:** NOT FOUND

#### Manhole Location and Configuration



#### Inspection Photos



**Manhole Inspection Form****Manhole Information****Inspector:** BM AND JC**GIS MH No:** 1-302**Date:** 5/3/2022**Type of Manhole:****Weather:** DRY (NO PRECIPITATION DURING SURVEY)**Inspection Status:** NOT FOUND**Street:** ROSSIE**Rim to Invert (ft):****Location:** LOCAL RURAL STREETS**Grade to Rim (in):****Manhole Infiltration****Surcharge:****Number of Holes:****Infiltration:****Metal Riser:****Manhole Characteristics**

Location in MH	Mtrl. Code	Infil. Code	Cond. Code	Repair Codes	Comments
Frame/Cover					
Chimney					
Cone					
Wall					
Bench					
Invert/Channel					

**Invert Information**

Pipe	Direction	Rim to Invert	Pipe Dia. (in)	Pipe Mtrl. Code	Clock Position*	Comments
Pipe 1						
Pipe 2						
Pipe 3						
Pipe 4						
Pipe 5						

**Additional  
Comments**





CDM  
Smith

## Town of Stonington, Connecticut

### Manhole Inspection Form

#### Manhole Information

Inspector: BM AND JC

Date: 5/6/2022

Weather: DRY (NO PRECIPITATION DURING SURVEY)

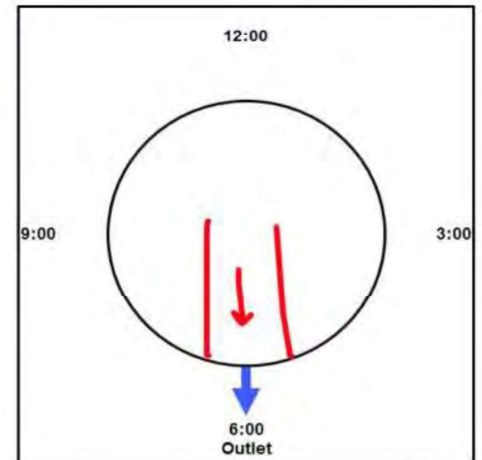
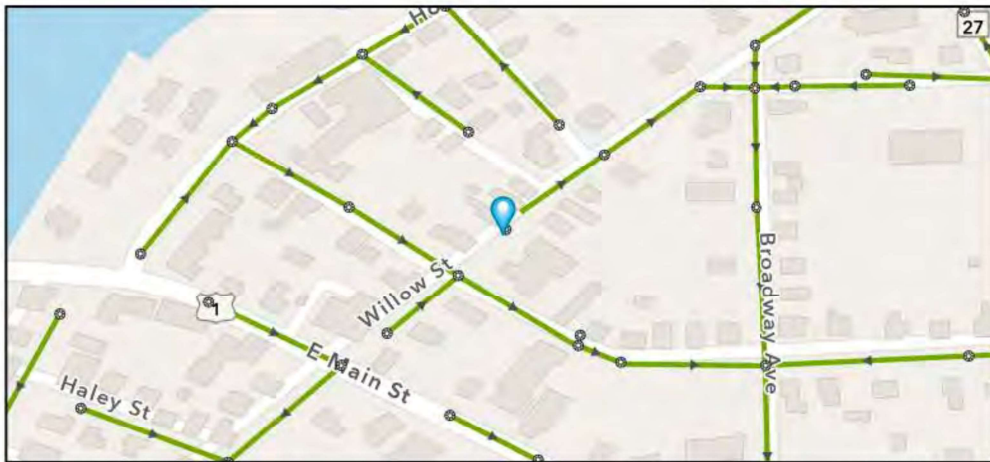
Street: 20 WILLOW ST

GIS MH No: 1-307

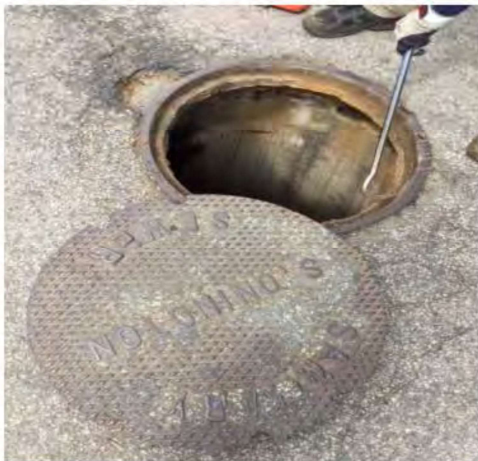
Type of Manhole: SANITARY SEWER (GRAVITY)

Inspection Status: SURFACE INSPECTION: LEVEL 1 (NO MANHOLE ENTRY)

#### Manhole Location and Configuration



#### Inspection Photos



**Manhole Inspection Form****Manhole Information****Inspector:** BM AND JC**Date:** 5/6/2022**Weather:** DRY (NO PRECIPITATION DURING SURVEY)**GIS MH No:** 1-307**Type of Manhole:** SANITARY SEWER (GRAVITY)**Inspection Status:** SURFACE INSPECTION: LEVEL 1 (NO MANHOLE ENTRY)**Street:** 20 WILLOW ST**Location:** LOCAL RURAL STREETS**Rim to Invert (ft):** 8**Grade to Rim (in):** 0**Manhole Infiltration****Surcharge:** NO**Number of Holes:** 0**Infiltration:** NO**Metal Riser:** NO**Manhole Characteristics**

Location in MH	Mtrl. Code	Infil. Code	Cond. Code	Repair Codes	Comments
Frame/Cover	CAST IRON	WEEPER	SOUND	REPLACE FRAME AND COVER	LOTS OF INFLOW
Chimney	BRICK	NONE	SOUND	NONE	
Cone	CONCRETE (PRECAST)	NONE	SOUND	NONE	
Wall	CONCRETE (PRECAST)	NONE	SOUND	NONE	
Bench	BRICK	NONE	SOUND	NONE	
Invert/Channel	BRICK	NONE	SOUND	NONE	

**Invert Information**

Pipe	Direction	Rim to Invert	Pipe Dia. (in)	Pipe Mtrl. Code	Clock Position*	Comments
Pipe 1	OUT	8	8.25	VITRIFIED CLAY PIPE	06:00	
Pipe 2						
Pipe 3						
Pipe 4						
Pipe 5						

**Additional  
Comments**





CDM  
Smith

# Town of Stonington, Connecticut

## Manhole Inspection Form

### Manhole Information

Inspector: BM AND JC

Date: 5/18/2022

Weather: DRY (NO PRECIPITATION DURING SURVEY)

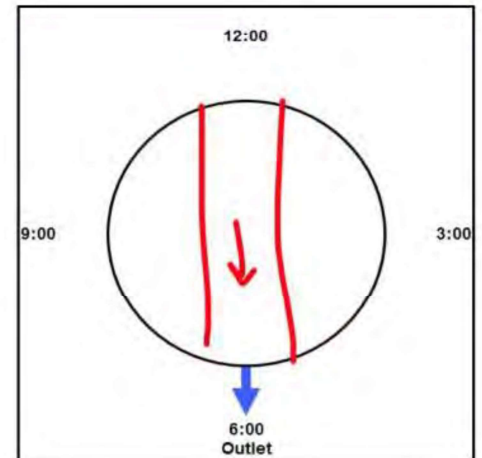
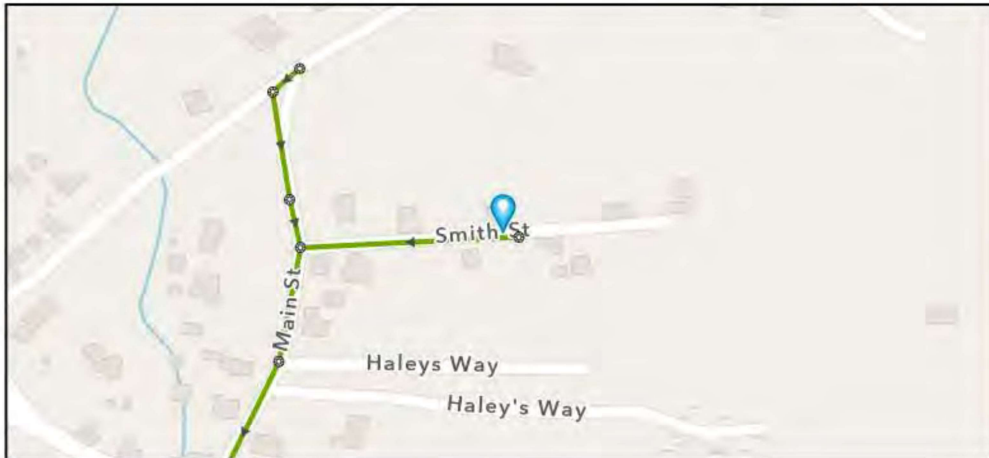
Street: SMITH STREET

GIS MH No: 1-308

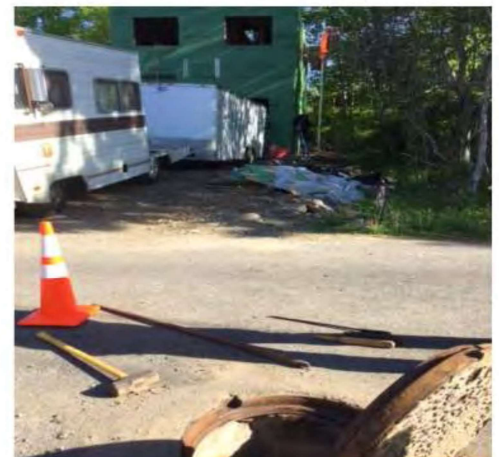
Type of Manhole: SANITARY SEWER (GRAVITY)

Inspection Status: SURFACE INSPECTION: LEVEL 1 (NO MANHOLE ENTRY)

### Manhole Location and Configuration



### Inspection Photos



**Manhole Inspection Form****Manhole Information****Inspector:** BM AND JC**Date:** 5/18/2022**Weather:** DRY (NO PRECIPITATION DURING SURVEY)**GIS MH No:** 1-308**Type of Manhole:** SANITARY SEWER (GRAVITY)**Inspection Status:** SURFACE INSPECTION: LEVEL 1 (NO MANHOLE ENTRY)**Street:** SMITH STREET**Location:** LOCAL RURAL STREETS**Rim to Invert (ft):** 4.5**Grade to Rim (in):** 0**Manhole Infiltration****Surcharge:** NO**Number of Holes:** 0**Infiltration:** NO**Metal Riser:** NO**Manhole Characteristics**

Location in MH	Mtrl. Code	Infil. Code	Cond. Code	Repair Codes	Comments
Frame/Cover	CAST IRON	NONE	SOUND	REPLACE FRAME AND COVER	
Chimney	CONCRETE BLOCK	NONE	SOUND	NONE	
Cone	CONCRETE (PRECAST)	NONE	SOUND	NONE	
Wall	CONCRETE (PRECAST)	NONE	SOUND	NONE	
Bench	BRICK	NONE	SOUND	NONE	
Invert/Channel	BRICK	NONE	SOUND	NONE	

**Invert Information**

Pipe	Direction	Rim to Invert	Pipe Dia. (in)	Pipe Mtrl. Code	Clock Position*	Comments
Pipe 1	OUT	4.5	8	POLY VINYL CHLORIDE	06:00	
Pipe 2	IN	4.5	8	POLY VINYL CHLORIDE	12:00	
Pipe 3						
Pipe 4						
Pipe 5						

**Additional  
Comments**





CDM  
Smith

# Town of Stonington, Connecticut

## Manhole Inspection Form

### Manhole Information

Inspector: BM/JC

Date: 5/12/2022

Weather: DRY (NO PRECIPITATION DURING SURVEY)

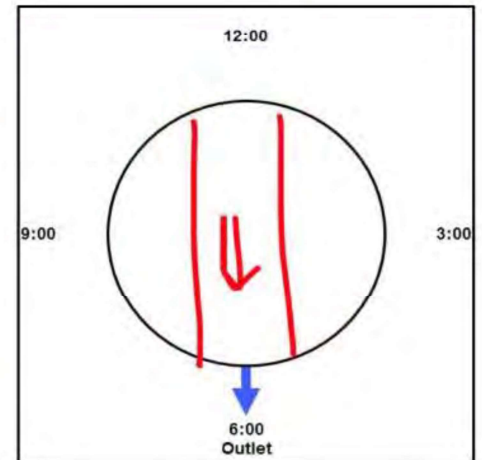
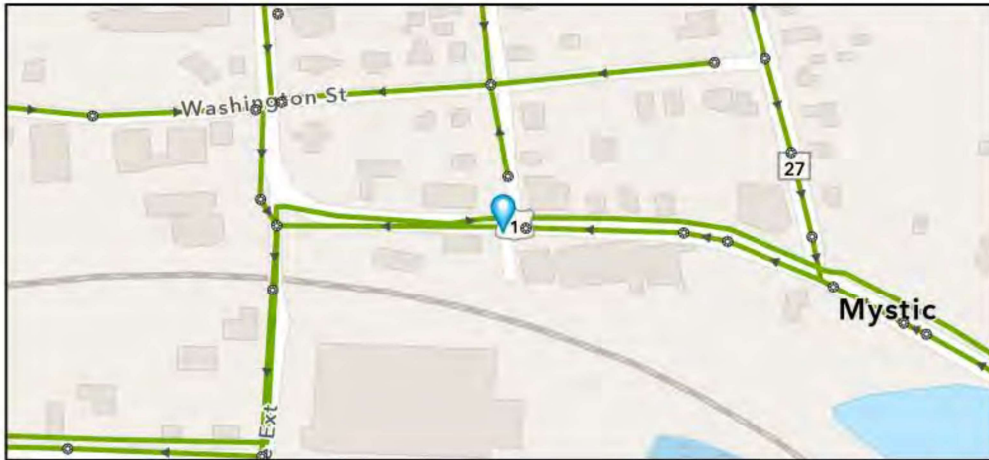
Street: ROOSEVELT ST (ROUTE 1)

GIS MH No: 2-1

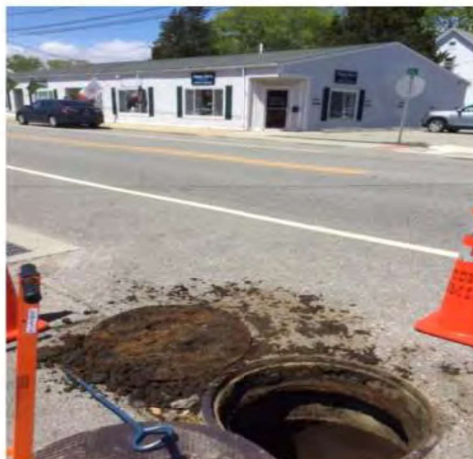
Type of Manhole: SANITARY SEWER (GRAVITY)

Inspection Status: SURFACE INSPECTION: LEVEL 1 (NO MANHOLE ENTRY)

### Manhole Location and Configuration



### Inspection Photos



**Manhole Inspection Form****Manhole Information**

**Inspector:** BM/JC **GIS MH No:** 2-1  
**Date:** 5/12/2022 **Type of Manhole:** SANITARY SEWER (GRAVITY)  
**Weather:** DRY (NO PRECIPITATION DURING SURVEY) **Inspection Status:** SURFACE INSPECTION: LEVEL 1 (NO MANHOLE ENTRY)  
**Street:** ROOSEVELT ST (ROUTE 1) **Rim to Invert (ft):** 7.5  
**Location:** PRIMARY ARTERIAL ROADS **Grade to Rim (in):** 0

**Manhole Infiltration**

**Surcharge:** NO **Number of Holes:** 0  
**Infiltration:** YES **Metal Riser:** NO

**Manhole Characteristics**

Location in MH	Mtrl. Code	Infil. Code	Cond. Code	Repair Codes	Comments
Frame/Cover	CAST IRON	NONE	SOUND	REPLACE FRAME AND COVER	REPLACE COVER, HANDLES ARE BROKEN
Chimney	CONCRETE BLOCK	NONE	SOUND	NONE	
Cone	CONCRETE (PRECAST)	NONE	SOUND	NONE	
Wall	CONCRETE (PRECAST)	NONE	DEFECTIVE	LINE_MANHOLE	BOTTOM OF WALL IS CORRODED
Bench	BRICK	NONE	SOUND	NONE	
Invert/Channel	BRICK	RUNNER	DEFECTIVE	REPAIR_CHANNEL	RUNNER IN CHANNEL BY OUTLET

**Invert Information**

Pipe	Direction	Rim to Invert	Pipe Dia. (in)	Pipe Mtrl. Code	Clock Position*	Comments
Pipe 1	OUT	7.5	24	REINFORCED CONCRETE PIPE	06:00	
Pipe 2	IN	7.5	24	REINFORCED CONCRETE PIPE	12:00	
Pipe 3						
Pipe 4						
Pipe 5						

Additional  
Comments





# Town of Stonington, Connecticut

## Manhole Inspection Form

### Manhole Information

Inspector: BM AK

Date: 9/8/2022

Weather: DRY (NO PRECIPITATION DURING SURVEY)

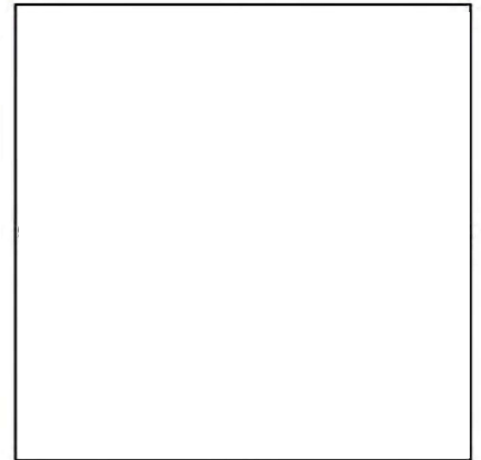
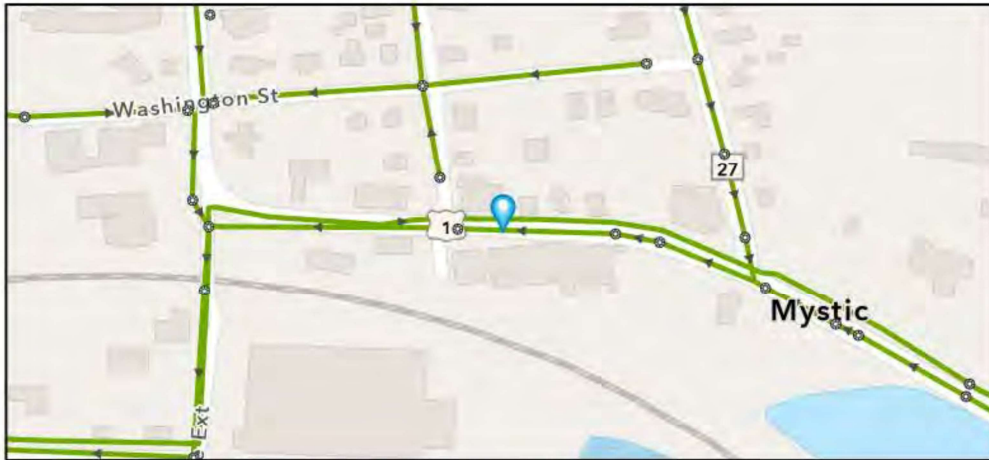
Street: ROOSEVELT STREET

GIS MH No: 2-1A

Type of Manhole:

Inspection Status: NO ACCESS

### Manhole Location and Configuration



### Inspection Photos



**Manhole Inspection Form****Manhole Information****Inspector:** BM AK**GIS MH No:** 2-1A**Date:** 9/8/2022**Type of Manhole:****Weather:** DRY (NO PRECIPITATION DURING SURVEY)**Inspection Status:** NO ACCESS**Street:** ROOSEVELT STREET**Rim to Invert (ft):****Location:** PRIMARY ARTERIAL ROADS**Grade to Rim (in):****Manhole Infiltration****Surcharge:****Number of Holes:****Infiltration:****Metal Riser:****Manhole Characteristics**

Location in MH	Mtrl. Code	Infil. Code	Cond. Code	Repair Codes	Comments
Frame/Cover					
Chimney					
Cone					
Wall					
Bench					
Invert/Channel					

**Invert Information**

Pipe	Direction	Rim to Invert	Pipe Dia. (in)	Pipe Mtrl. Code	Clock Position*	Comments
Pipe 1						
Pipe 2						
Pipe 3						
Pipe 4						
Pipe 5						

**Additional  
Comments**





Manhole Inspection Form

Manhole Information

Inspector: BM/JC

Date: 5/12/2022

Weather: DRY (NO PRECIPITATION DURING SURVEY)

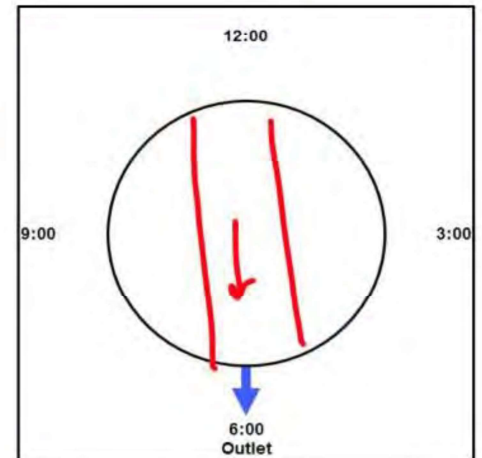
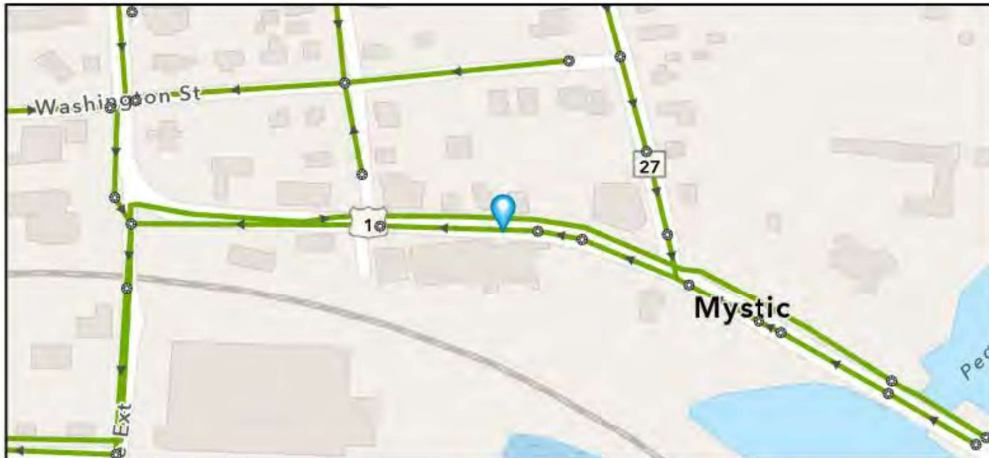
Street: ROOSEVELT AVE

GIS MH No: 2-2

Type of Manhole: SANITARY SEWER (GRAVITY)

Inspection Status: SURFACE INSPECTION: LEVEL 1 (NO MANHOLE ENTRY)

Manhole Location and Configuration



Inspection Photos



**Manhole Inspection Form****Manhole Information**

**Inspector:** BM/JC **GIS MH No:** 2-2  
**Date:** 5/12/2022 **Type of Manhole:** SANITARY SEWER (GRAVITY)  
**Weather:** DRY (NO PRECIPITATION DURING SURVEY) **Inspection Status:** SURFACE INSPECTION; LEVEL 1 (NO MANHOLE ENTRY)  
**Street:** ROOSEVELT AVE **Rim to Invert (ft):** 8.5  
**Location:** SIDEWALK **Grade to Rim (in):** 0

**Manhole Infiltration**

**Surcharge:** NO **Number of Holes:** 0  
**Infiltration:** YES **Metal Riser:** NO

**Manhole Characteristics**

Location in MH	Mtrl. Code	Infil. Code	Cond. Code	Repair Codes	Comments
Frame/Cover	CAST IRON	NONE	SOUND	NONE	
Chimney	BRICK	NONE	SOUND	NONE	BRICK AND CONCRETE BLOCK
Cone	CONCRETE (PRECAST)	NONE	SOUND	NONE	
Wall	BRICK	WEEPER	DEFECTIVE	LINE_MANHOLE	INFILTRATION NEAR 2:00
Bench	BRICK	NONE	SOUND	NONE	
Invert/Channel	BRICK	NONE	SOUND	NONE	

**Invert Information**

Pipe	Direction	Rim to Invert	Pipe Dia. (in)	Pipe Mtrl. Code	Clock Position*	Comments
Pipe 1	OUT	8.5	24	REINFORCED CONCRETE PIPE	06:00	
Pipe 2	IN	8.5	24	REINFORCED CONCRETE PIPE	12:00	
Pipe 3						
Pipe 4						
Pipe 5						

Additional  
Comments





Manhole Inspection Form

Manhole Information

Inspector: BM/JC

Date: 5/12/2022

Weather: DRY (NO PRECIPITATION DURING SURVEY)

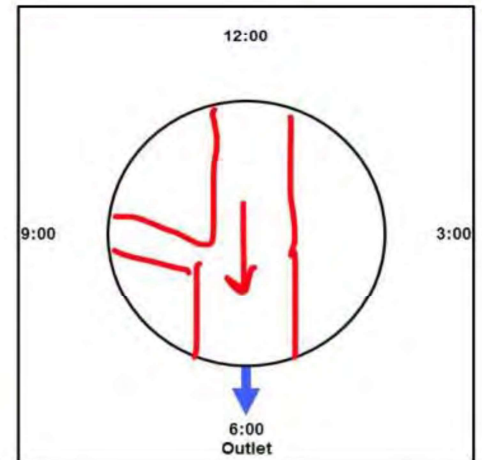
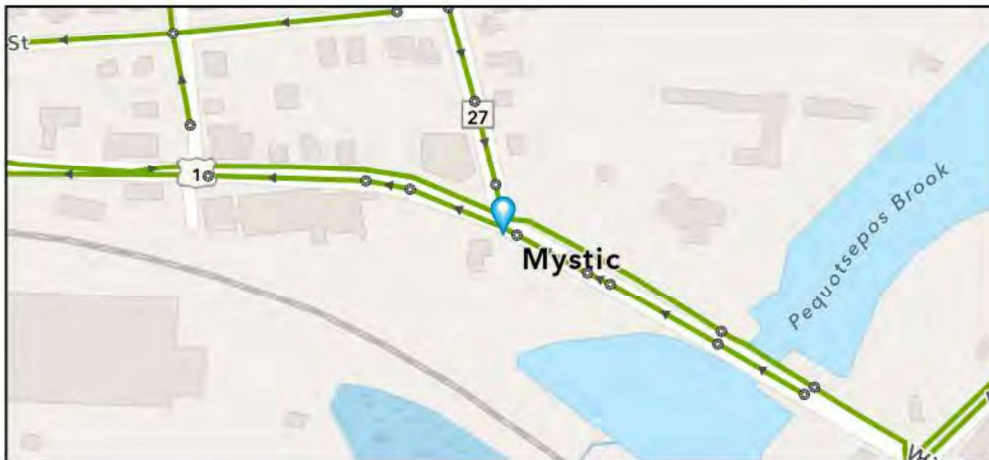
Street: ROOSEVELT AVE

GIS MH No: 2-3

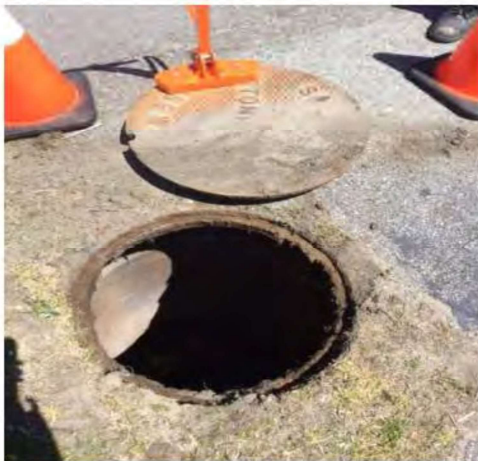
Type of Manhole: SANITARY SEWER (GRAVITY)

Inspection Status: SURFACE INSPECTION: LEVEL 1 (NO MANHOLE ENTRY)

Manhole Location and Configuration



Inspection Photos



**Manhole Inspection Form****Manhole Information**

**Inspector:** BM/JC **GIS MH No:** 2-3  
**Date:** 5/12/2022 **Type of Manhole:** SANITARY SEWER (GRAVITY)  
**Weather:** DRY (NO PRECIPITATION DURING SURVEY) **Inspection Status:** SURFACE INSPECTION: LEVEL 1 (NO MANHOLE ENTRY)  
**Street:** ROOSEVELT AVE **Rim to Invert (ft):** 9.5  
**Location:** PRIMARY ARTERIAL ROADS **Grade to Rim (in):** 0

**Manhole Infiltration**

**Surcharge:** NO **Number of Holes:** 0  
**Infiltration:** NO **Metal Riser:** NO

**Manhole Characteristics**

Location in MH	Mtrl. Code	Infil. Code	Cond. Code	Repair Codes	Comments
Frame/Cover	CAST IRON	NONE	SOUND	NONE	
Chimney	BRICK	NONE	SOUND	NONE	
Cone	CONCRETE (PRECAST)	NONE	SOUND	NONE	
Wall	CONCRETE (PRECAST)	NONE	SOUND	NONE	
Bench	BRICK	NONE	SOUND	NONE	
Invert/Channel	BRICK	NONE	SOUND	NONE	

**Invert Information**

Pipe	Direction	Rim to Invert	Pipe Dia. (in)	Pipe Mtrl. Code	Clock Position*	Comments
Pipe 1	OUT	9.5	24	REINFORCED CONCRETE PIPE	06:00	
Pipe 2	IN	9	4	REINFORCED CONCRETE PIPE	07:00	LATERAL?
Pipe 3	IN	9.5	24	REINFORCED CONCRETE PIPE	12:00	
Pipe 4						
Pipe 5						

Additional  
Comments





CDM  
Smith

# Town of Stonington, Connecticut

## Manhole Inspection Form

### Manhole Information

Inspector: BM AK

Date: 9/8/2022

Weather: DRY (NO PRECIPITATION DURING SURVEY)

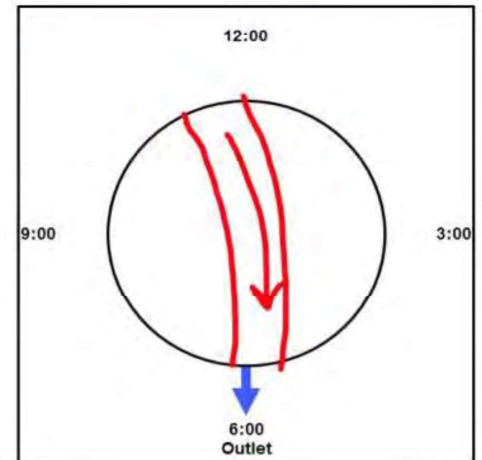
Street: ROUTE 1

GIS MH No: 2-3A

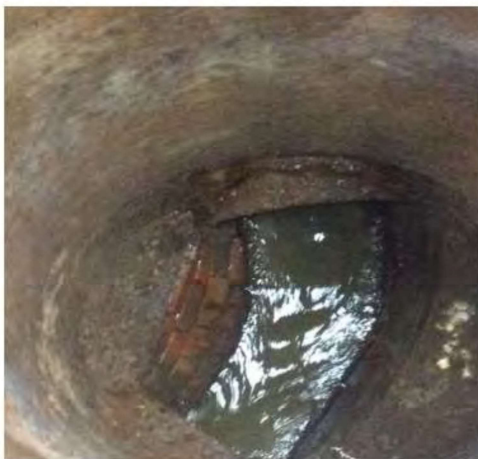
Type of Manhole: SANITARY SEWER (GRAVITY)

Inspection Status: SURFACE INSPECTION: LEVEL 1 (NO MANHOLE ENTRY)

### Manhole Location and Configuration



### Inspection Photos



**Manhole Inspection Form****Manhole Information**

**Inspector:** BM AK  
**Date:** 9/8/2022

**Weather:** DRY (NO PRECIPITATION DURING SURVEY)

**Street:** ROUTE 1  
**Location:** YARD

**GIS MH No:** 2-3A

**Type of Manhole:** SANITARY SEWER (GRAVITY)

**Inspection Status:** SURFACE INSPECTION: LEVEL 1 (NO MANHOLE ENTRY)

**Rim to Invert (ft):** 13

**Grade to Rim (in):** 0

**Manhole Infiltration**

**Surcharge:** NO

**Infiltration:** YES

**Number of Holes:** 0

**Metal Riser:** NO

**Manhole Characteristics**

Location in MH	Mtrl. Code	Infil. Code	Cond. Code	Repair Codes	Comments
Frame/Cover	CAST IRON	NONE	CORRODED	REPLACE FRAME AND COVER	
Chimney	BRICK	NONE	SOUND	NONE	
Cone	OTHER (DESCRIBE IN DETAILS)	NONE	SOUND	NONE	NO CONE
Wall	CONCRETE (PRECAST)	WEEPER	DEFECTIVE	REMOVE_ROOTS,LINE	MINOR INFILTRATION AT BOTTOM OF WALL AND TOP OF PIPE (11:00). ROOTS NEAR THE TOP OF THE WALL.
Bench	BRICK	NONE	SOUND	NONE	
Invert/Channel	BRICK	NONE	SOUND	NONE	

**Invert Information**

Pipe	Direction	Rim to Invert	Pipe Dia. (in)	Pipe Mtrl. Code	Clock Position*	Comments
Pipe 1	OUT	13	18	REINFORCED CONCRETE PIPE	06:00	
Pipe 2	IN	13	18	REINFORCED CONCRETE PIPE	11:00	
Pipe 3						
Pipe 4						
Pipe 5						

**Additional  
Comments**





# Town of Stonington, Connecticut

## Manhole Inspection Form

### Manhole Information

Inspector: BM AK

Date: 9/8/2022

Weather: DRY (NO PRECIPITATION DURING SURVEY)

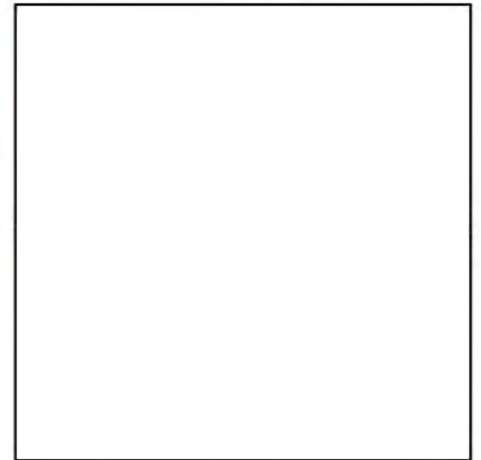
Street: ROUTE 1

GIS MH No: 2-4

Type of Manhole:

Inspection Status: NO ACCESS

### Manhole Location and Configuration



### Inspection Photos





# Town of Stonington, Connecticut

## Manhole Inspection Form

### Manhole Information

Inspector: BM AK

Date: 9/8/2022

Weather: DRY (NO PRECIPITATION DURING SURVEY)

Street: ROUTE 1

Location: PRIMARY ARTERIAL ROADS

GIS MH No: 2-4

Type of Manhole:

Inspection Status: NO ACCESS

Rim to Invert (ft):

Grade to Rim (in):

### Manhole Infiltration

Surcharge:

Infiltration:

Number of Holes:

Metal Riser:

### Manhole Characteristics

Location in MH	Mtrl. Code	Infil. Code	Cond. Code	Repair Codes	Comments
Frame/Cover					
Chimney					
Cone					
Wall					
Bench					
Invert/Channel					

### Invert Information

Pipe	Direction	Rim to Invert	Pipe Dia. (in)	Pipe Mtrl. Code	Clock Position*	Comments
Pipe 1						
Pipe 2						
Pipe 3						
Pipe 4						
Pipe 5						

Additional  
Comments





# Town of Stonington, Connecticut

## Manhole Inspection Form

### Manhole Information

Inspector: BM AK

Date: 9/8/2022

Weather: DRY (NO PRECIPITATION DURING SURVEY)

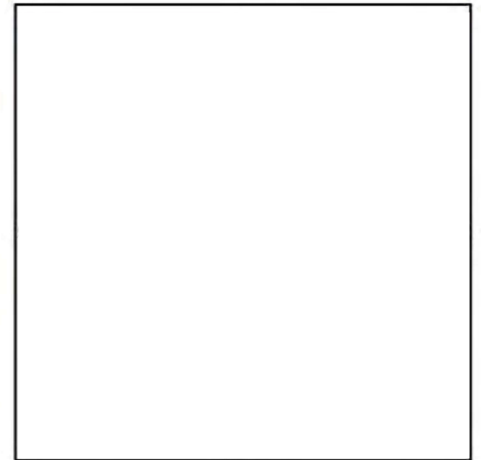
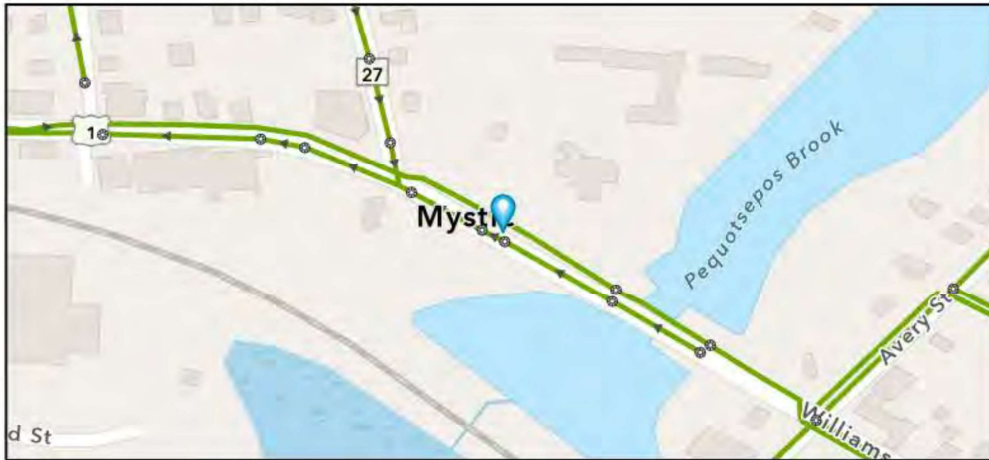
Street: ROUTE 1

GIS MH No: 2-5

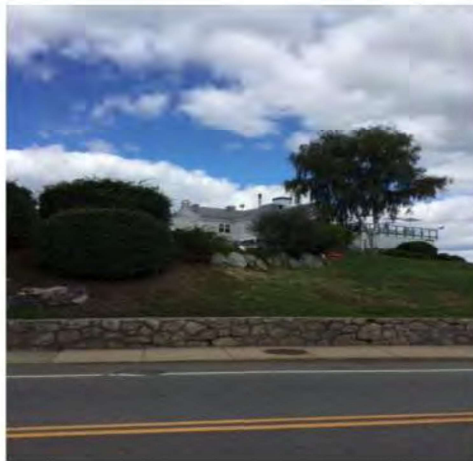
Type of Manhole:

Inspection Status: NO ACCESS

### Manhole Location and Configuration



### Inspection Photos





## Manhole Inspection Form

## Manhole Information

Inspector: BM AK  
Date: 9/8/2022

Weather: DRY (NO PRECIPITATION DURING SURVEY)

Street: ROUTE 1  
Location: PRIMARY ARTERIAL ROADS

GIS MH No: 2-5  
Type of Manhole:  
Inspection Status: NO ACCESS

Rim to Invert (ft):  
Grade to Rim (in):

## Manhole Infiltration

Surcharge:  
Infiltration:

Number of Holes:  
Metal Riser:

## Manhole Characteristics

Location in MH	Mtrl. Code	Infil. Code	Cond. Code	Repair Codes	Comments
Frame/Cover					
Chimney					
Cone					
Wall					
Bench					
Invert/Channel					

## Invert Information

Pipe	Direction	Rim to Invert	Pipe Dia. (in)	Pipe Mtrl. Code	Clock Position*	Comments
Pipe 1						
Pipe 2						
Pipe 3						
Pipe 4						
Pipe 5						

Additional  
Comments





# Town of Stonington, Connecticut

## Manhole Inspection Form

### Manhole Information

Inspector: BH AND JC

Date: 5/6/2022

Weather: DRY (NO PRECIPITATION DURING SURVEY)

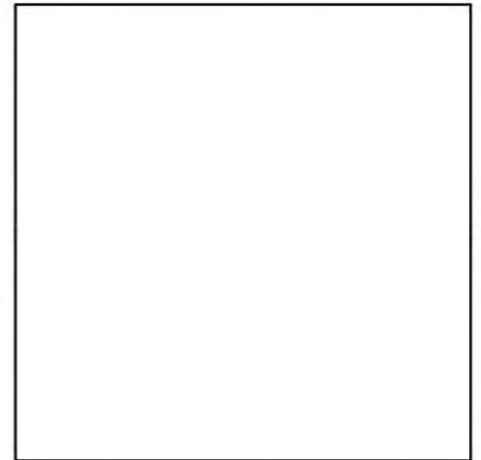
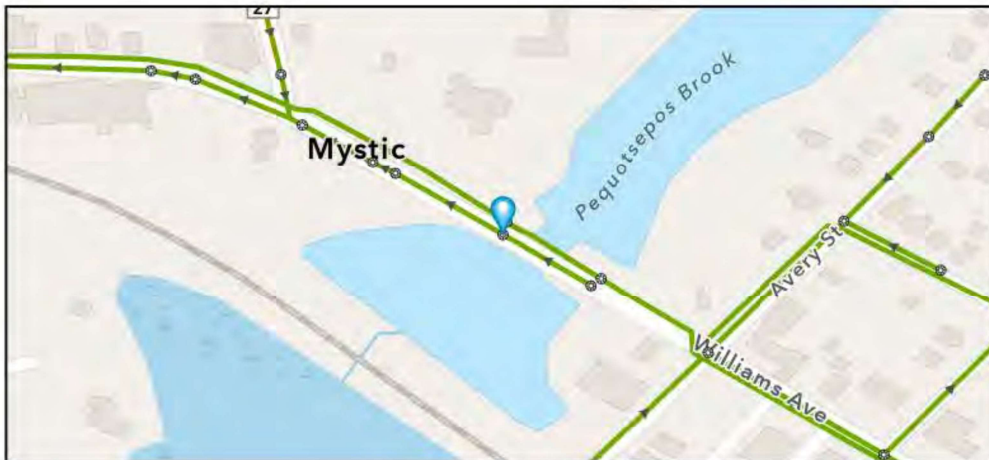
Street: ROUTE 1

GIS MH No: 2-6

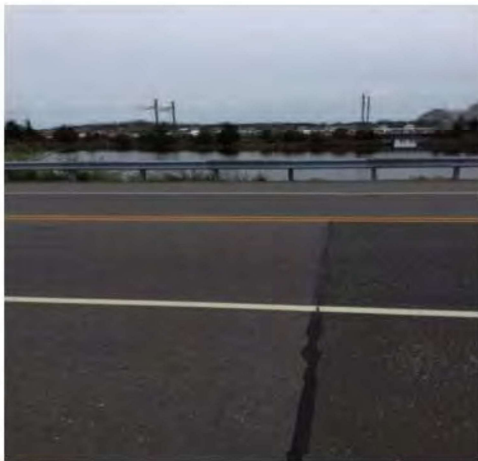
Type of Manhole:

Inspection Status: NOT FOUND

### Manhole Location and Configuration



### Inspection Photos





# Town of Stonington, Connecticut

## Manhole Inspection Form

### Manhole Information

Inspector: BH AND JC

Date: 5/6/2022

Weather: DRY (NO PRECIPITATION DURING SURVEY)

Street: ROUTE 1

Location: PRIMARY ARTERIAL ROADS

GIS MH No: 2-6

Type of Manhole:

Inspection Status: NOT FOUND

Rim to Invert (ft):

Grade to Rim (in):

### Manhole Infiltration

Surcharge:

Infiltration:

Number of Holes:

Metal Riser:

### Manhole Characteristics

Location in MH	Mtrl. Code	Infil. Code	Cond. Code	Repair Codes	Comments
Frame/Cover					
Chimney					
Cone					
Wall					
Bench					
Invert/Channel					

### Invert Information

Pipe	Direction	Rim to Invert	Pipe Dia. (in)	Pipe Mtrl. Code	Clock Position*	Comments
Pipe 1						
Pipe 2						
Pipe 3						
Pipe 4						
Pipe 5						

Additional  
Comments





CDM  
Smith

# Town of Stonington, Connecticut

## Manhole Inspection Form

### Manhole Information

Inspector: BM AND JC

Date: 5/12/2022

Weather: DRY (NO PRECIPITATION DURING SURVEY)

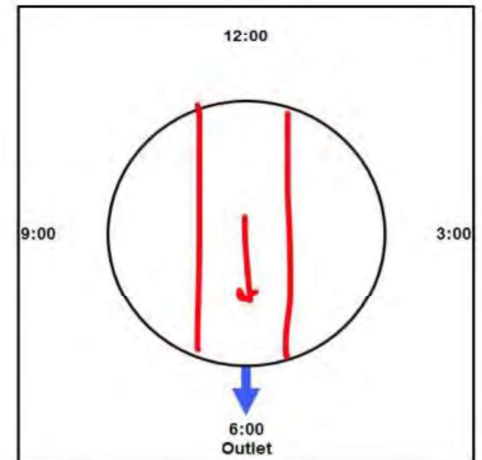
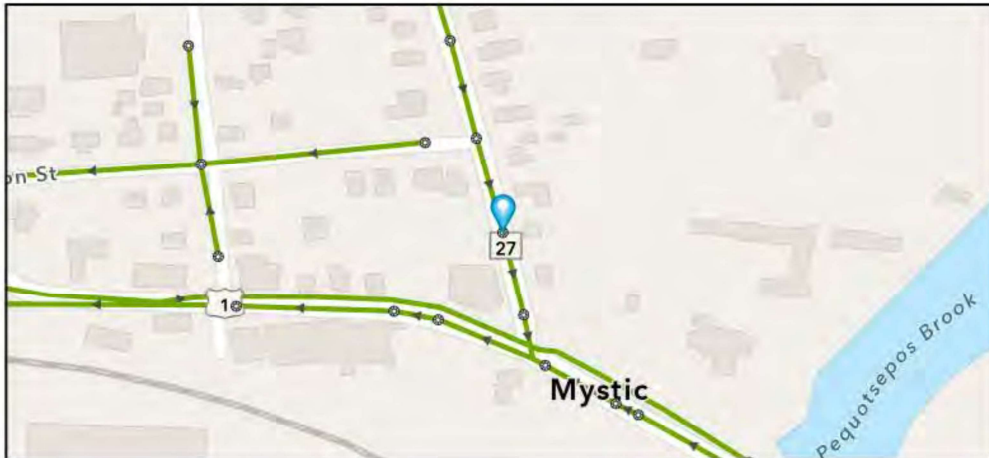
Street: 8 DENISON AVE (RT 27)

GIS MH No: 2-8

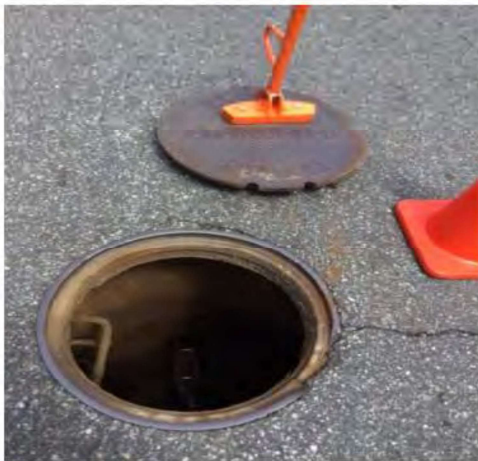
Type of Manhole: SANITARY SEWER (GRAVITY)

Inspection Status: SURFACE INSPECTION: LEVEL 1 (NO MANHOLE ENTRY)

### Manhole Location and Configuration



### Inspection Photos





# Town of Stonington, Connecticut

## Manhole Inspection Form

### Manhole Information

Inspector: BM AND JC

Date: 5/12/2022

Weather: DRY (NO PRECIPITATION DURING SURVEY)

Street: 8 DENISON AVE (RT 27)

Location: PRIMARY ARTERIAL ROADS

GIS MH No: 2-8

Type of Manhole: SANITARY SEWER (GRAVITY)

Inspection Status: SURFACE INSPECTION: LEVEL 1 (NO MANHOLE ENTRY)

Rim to Invert (ft): 6.5

Grade to Rim (in): 0

### Manhole Infiltration

Surcharge: NO

Infiltration: NO

Number of Holes: 0

Metal Riser: YES

### Manhole Characteristics

Location in MH	Mtrl. Code	Infil. Code	Cond. Code	Repair Codes	Comments
Frame/Cover	CAST IRON	WEEPER	BROKEN	REPLACE FRAME AND COVER	
Chimney	BRICK	NONE	SOUND	NONE	
Cone	CONCRETE (PRECAST)	NONE	SOUND	NONE	
Wall	CONCRETE (PRECAST)	NONE	SOUND	NONE	
Bench	BRICK	NONE	SOUND	NONE	
Invert/Channel	BRICK	NONE	SOUND	NONE	

### Invert Information

Pipe	Direction	Rim to Invert	Pipe Dia. (in)	Pipe Mtrl. Code	Clock Position*	Comments
Pipe 1	OUT	6.5	8	ASBESTOS CONCRETE	06:00	
Pipe 2	IN	6.5	8	ASBESTOS CONCRETE	12:00	
Pipe 3						
Pipe 4						
Pipe 5						

Additional  
Comments

\*6:00 is outlet





CDM  
Smith

## Town of Stonington, Connecticut

### Manhole Inspection Form

#### Manhole Information

Inspector: BM AND JC

Date: 5/6/2022

Weather: DRY (NO PRECIPITATION DURING SURVEY)

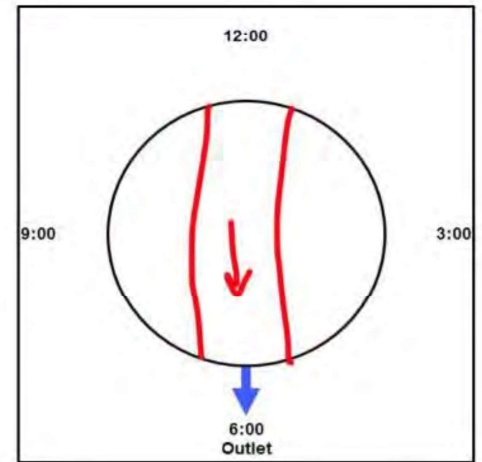
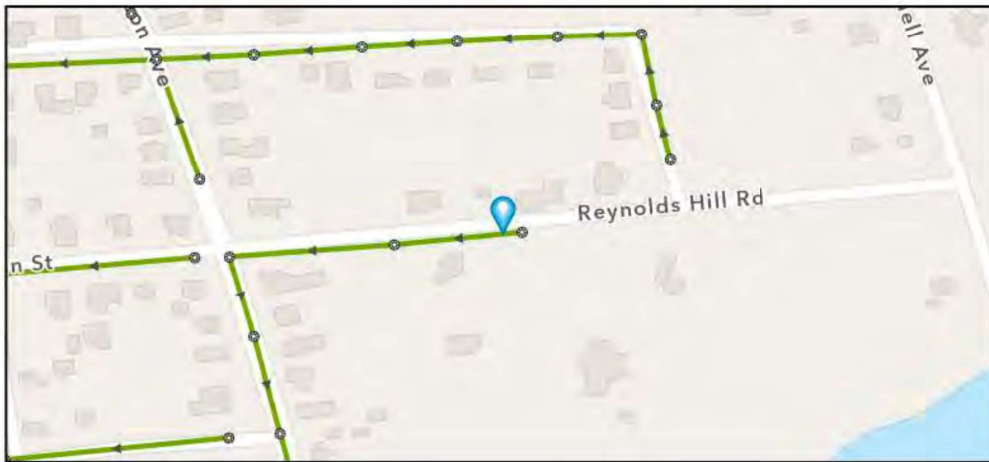
Street: 8 REYNOLDS'S HILL

GIS MH No: 2-114

Type of Manhole: SANITARY SEWER (GRAVITY)

Inspection Status: SURFACE INSPECTION: LEVEL 1 (NO MANHOLE ENTRY)

#### Manhole Location and Configuration



#### Inspection Photos



**Manhole Inspection Form****Manhole Information****Inspector:** BM AND JC**Date:** 5/6/2022**Weather:** DRY (NO PRECIPITATION DURING SURVEY)**GIS MH No:** 2-114**Type of Manhole:** SANITARY SEWER (GRAVITY)**Inspection Status:** SURFACE INSPECTION: LEVEL 1 (NO MANHOLE ENTRY)**Street:** 8 REYNOLDS'S HILL**Location:** LOCAL RURAL STREETS**Rim to Invert (ft):** 7.25**Grade to Rim (in):** 0**Manhole Infiltration****Surcharge:** NO**Infiltration:** YES**Number of Holes:** 3**Metal Riser:** NO**Manhole Characteristics**

Location in MH	Mtrl. Code	Infil. Code	Cond. Code	Repair Codes	Comments
Frame/Cover	CAST IRON	NONE	SOUND	NONE	
Chimney	BRICK	NONE	SOUND	NONE	
Cone	CONCRETE (PRECAST)	STAINS	DEFECTIVE	LINE_MANHOLE	
Wall	CONCRETE (PRECAST)	STAINS	DEFECTIVE	LINE_MANHOLE	
Bench	BRICK	NONE	SOUND	NONE	
Invert/Channel	BRICK	NONE	SOUND	NONE	

**Invert Information**

Pipe	Direction	Rim to Invert	Pipe Dia. (in)	Pipe Mtrl. Code	Clock Position*	Comments
Pipe 1	OUT	7.25	8	ASBESTOS CONCRETE	06:00	
Pipe 2	IN	7	8	ASBESTOS CONCRETE	12:00	
Pipe 3						
Pipe 4						
Pipe 5						

**Additional  
Comments**





CDM  
Smith

## Town of Stonington, Connecticut

### Manhole Inspection Form

#### Manhole Information

Inspector: BM AND JC

Date: 5/6/2022

Weather: DRY (NO PRECIPITATION DURING SURVEY)

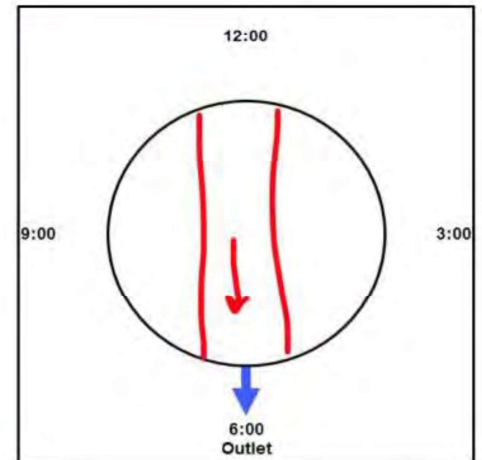
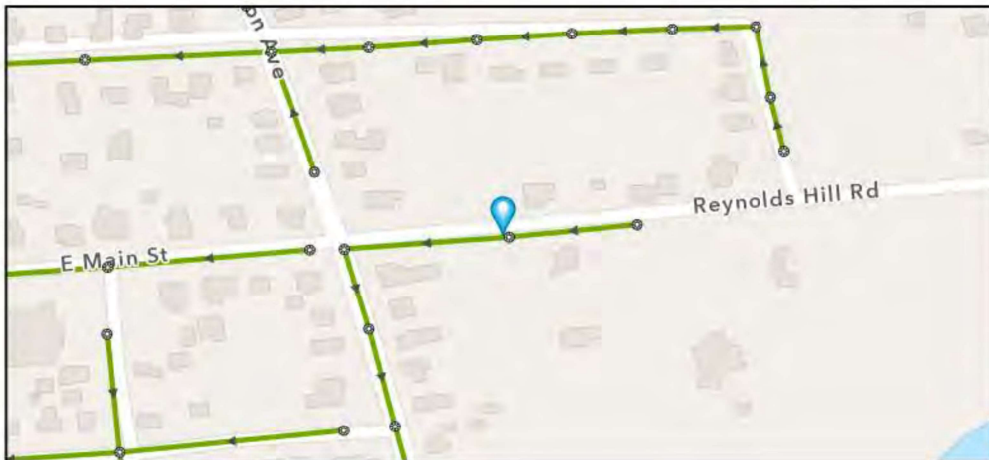
Street: REYNOLDS HILL RD

GIS MH No: 2-115

Type of Manhole: SANITARY SEWER (GRAVITY)

Inspection Status: SURFACE INSPECTION: LEVEL 1 (NO MANHOLE ENTRY)

#### Manhole Location and Configuration



#### Inspection Photos



**Manhole Inspection Form****Manhole Information****Inspector:** BM AND JC**Date:** 5/6/2022**Weather:** DRY (NO PRECIPITATION DURING SURVEY)**GIS MH No:** 2-115**Type of Manhole:** SANITARY SEWER (GRAVITY)**Inspection Status:** SURFACE INSPECTION; LEVEL 1 (NO MANHOLE ENTRY)**Street:** REYNOLDS HILL RD**Rim to Invert (ft):** 8.5**Location:** LOCAL RURAL STREETS**Grade to Rim (in):** 0**Manhole Infiltration****Surcharge:** NO**Number of Holes:** 0**Infiltration:** NO**Metal Riser:** NO**Manhole Characteristics**

Location in MH	Mtrl. Code	Infil. Code	Cond. Code	Repair Codes	Comments
Frame/Cover	CAST IRON	NONE	SOUND	NONE	
Chimney	BRICK	NONE	SOUND	NONE	BRICK AND CONCRETE BLOCK
Cone	CONCRETE (PRECAST)	NONE	SOUND	NONE	
Wall	CONCRETE (PRECAST)	NONE	SOUND	NONE	
Bench	BRICK	NONE	SOUND	NONE	
Invert/Channel	BRICK	NONE	SOUND	NONE	

**Invert Information**

Pipe	Direction	Rim to Invert	Pipe Dia. (in)	Pipe Mtrl. Code	Clock Position*	Comments
Pipe 1	OUT	8.5	8	ASBESTOS CONCRETE	06:00	
Pipe 2	IN	8.5	8	ASBESTOS CONCRETE	12:00	
Pipe 3						
Pipe 4						
Pipe 5						

**Additional  
Comments**





CDM  
Smith

## Town of Stonington, Connecticut

### Manhole Inspection Form

#### Manhole Information

Inspector: BM AK

Date: 9/8/2022

Weather: DRY (NO PRECIPITATION DURING SURVEY)

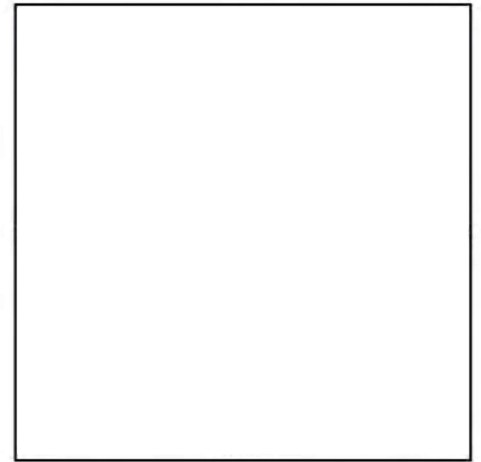
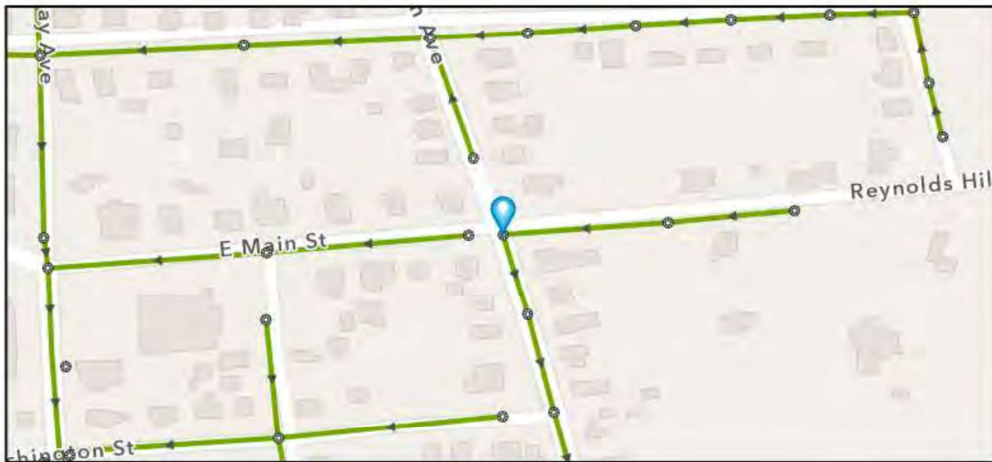
Street: ROUTE 27

GIS MH No: 2-116

Type of Manhole:

Inspection Status: NO ACCESS

#### Manhole Location and Configuration



#### Inspection Photos



**Manhole Inspection Form****Manhole Information**

Inspector: BM AK

GIS MH No: 2-116

Date: 9/8/2022

Type of Manhole:

Weather: DRY (NO PRECIPITATION DURING SURVEY)

Inspection Status: NO ACCESS

Street: ROUTE 27

Rim to Invert (ft):

Location: PRIMARY ARTERIAL ROADS

Grade to Rim (in):

**Manhole Infiltration**

Surcharge:

Number of Holes:

Infiltration:

Metal Riser:

**Manhole Characteristics**

Location in MH	Mtrl. Code	Infil. Code	Cond. Code	Repair Codes	Comments
Frame/Cover					
Chimney					
Cone					
Wall					
Bench					
Invert/Channel					

**Invert Information**

Pipe	Direction	Rim to Invert	Pipe Dia. (in)	Pipe Mtrl. Code	Clock Position*	Comments
Pipe 1						
Pipe 2						
Pipe 3						
Pipe 4						
Pipe 5						

Additional  
Comments





# Town of Stonington, Connecticut

## Manhole Inspection Form

### Manhole Information

Inspector: BM AK

Date: 9/8/2022

Weather: DRY (NO PRECIPITATION DURING SURVEY)

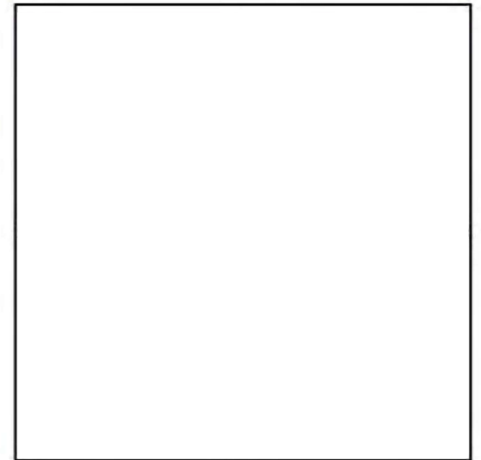
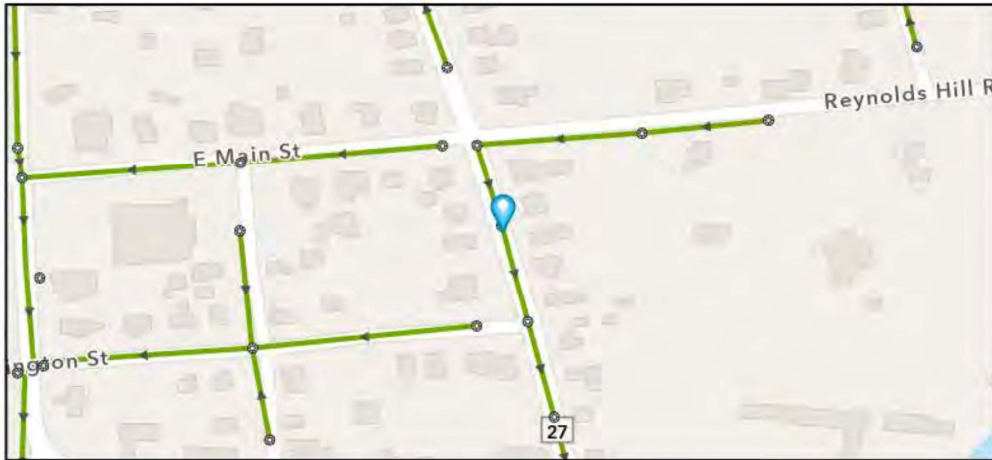
Street: ROUTE 27

GIS MH No: 2-117

Type of Manhole:

Inspection Status: NO ACCESS

### Manhole Location and Configuration



### Inspection Photos





# Town of Stonington, Connecticut

## Manhole Inspection Form

### Manhole Information

Inspector: BM AK  
Date: 9/8/2022  
Weather: DRY (NO PRECIPITATION DURING SURVEY)  
Street: ROUTE 27  
Location: PRIMARY ARTERIAL ROADS

GIS MH No: 2-117  
Type of Manhole:  
Inspection Status: NO ACCESS  
Rim to Invert (ft):  
Grade to Rim (in):

### Manhole Infiltration

Surcharge:  
Infiltration:

Number of Holes:  
Metal Riser:

### Manhole Characteristics

Location in MH	Mtrl. Code	Infil. Code	Cond. Code	Repair Codes	Comments
Frame/Cover					
Chimney					
Cone					
Wall					
Bench					
Invert/Channel					

### Invert Information

Pipe	Direction	Rim to Invert	Pipe Dia. (in)	Pipe Mtrl. Code	Clock Position*	Comments
Pipe 1						
Pipe 2						
Pipe 3						
Pipe 4						
Pipe 5						

Additional  
Comments





**CDM  
Smith**

## Town of Stonington, Connecticut

### Manhole Inspection Form

#### Manhole Information

**Inspector:** BM/JC

**Date:** 5/12/2022

**Weather:** DRY (NO PRECIPITATION DURING SURVEY)

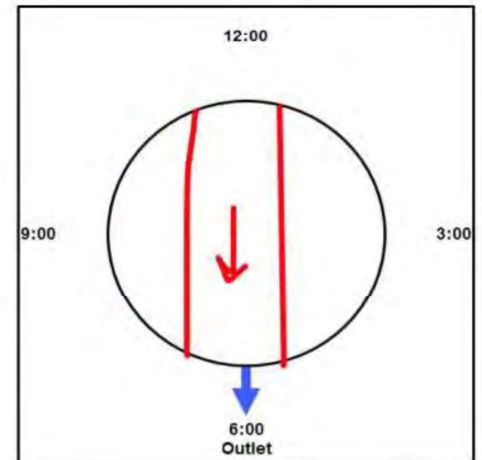
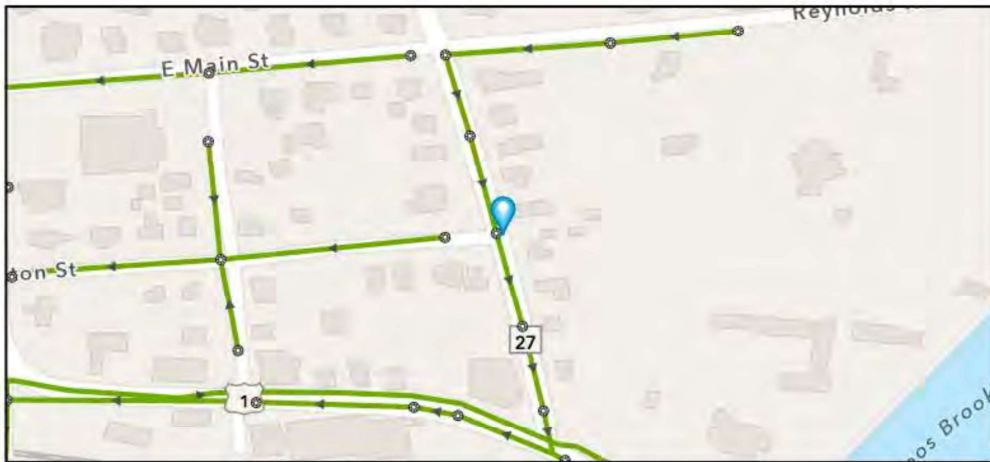
**Street:** 18 DENISON AVE (RT 27)

**GIS MH No:** 2-118

**Type of Manhole:** SANITARY SEWER (GRAVITY)

**Inspection Status:** SURFACE INSPECTION: LEVEL 1 (NO MANHOLE ENTRY)

#### Manhole Location and Configuration



#### Inspection Photos





# Town of Stonington, Connecticut

## Manhole Inspection Form

### Manhole Information

Inspector: BM/JC GIS MH No: 2-118  
Date: 5/12/2022 Type of Manhole: SANITARY SEWER (GRAVITY)  
Weather: DRY (NO PRECIPITATION DURING SURVEY) Inspection Status: SURFACE INSPECTION: LEVEL 1 (NO MANHOLE ENTRY)  
Street: 18 DENISON AVE (RT 27) Rim to Invert (ft): 8  
Location: PRIMARY ARTERIAL ROADS Grade to Rim (in): 0

### Manhole Infiltration

Surcharge: NO Number of Holes: 0  
Infiltration: NO Metal Riser: YES

### Manhole Characteristics

Location in MH	Mtrl. Code	Infil. Code	Cond. Code	Repair Codes	Comments
Frame/Cover	CAST IRON	WEEPER	BROKEN	REPLACE FRAME AND COVER	
Chimney	BRICK	NONE	SOUND	NONE	
Cone	CONCRETE (PRECAST)	NONE	SOUND	NONE	
Wall	CONCRETE (PRECAST)	NONE	SOUND	NONE	
Bench	BRICK	NONE	SOUND	NONE	
Invert/Channel	BRICK	NONE	SOUND	NONE	

### Invert Information

Pipe	Direction	Rim to Invert	Pipe Dia. (in)	Pipe Mtrl. Code	Clock Position*	Comments
Pipe 1	OUT	8	8	ASBESTOS CONCRETE	06:00	
Pipe 2	IN	8	8	ASBESTOS CONCRETE	12:00	
Pipe 3						
Pipe 4						
Pipe 5						

Additional  
Comments

\*6:00 is outlet





# Town of Stonington, Connecticut

## Manhole Inspection Form

### Manhole Information

Inspector: BM/JC

Date: 5/12/2022

Weather: DRY (NO PRECIPITATION DURING SURVEY)

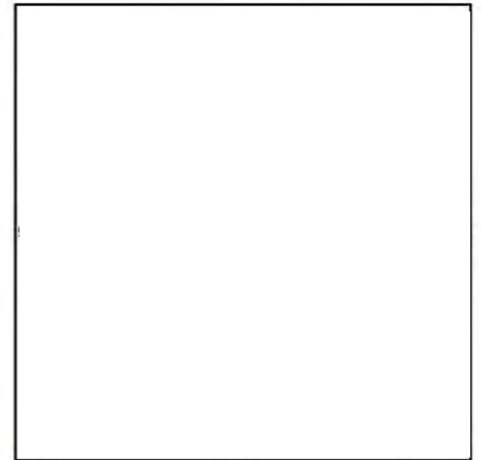
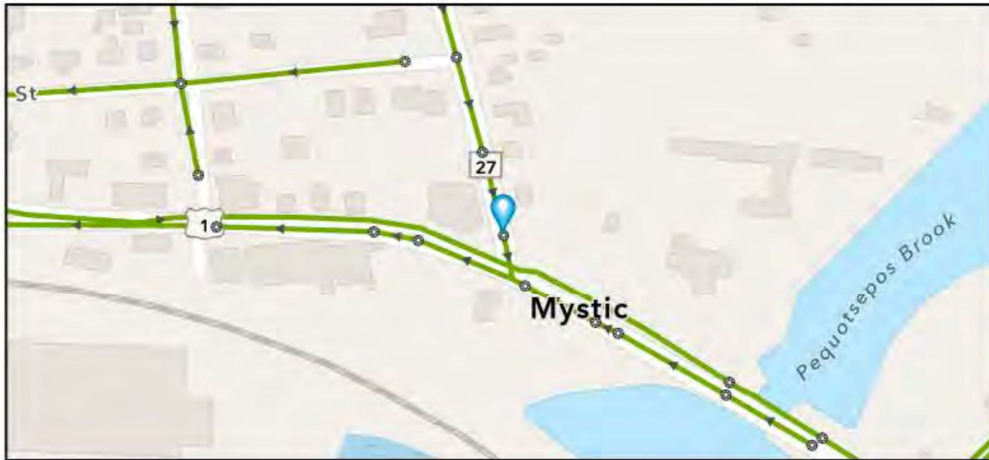
Street: ROUTE 27

GIS MH No: 2-119

Type of Manhole:

Inspection Status: NOT FOUND

### Manhole Location and Configuration



### Inspection Photos





# Town of Stonington, Connecticut

## Manhole Inspection Form

### Manhole Information

Inspector: BM/JC

GIS MH No: 2-119

Date: 5/12/2022

Type of Manhole:

Weather: DRY (NO PRECIPITATION DURING SURVEY)

Inspection Status: NOT FOUND

Street: ROUTE 27

Rim to Invert (ft):

Location: PRIMARY ARTERIAL ROADS

Grade to Rim (in):

### Manhole Infiltration

Surcharge:

Number of Holes:

Infiltration:

Metal Riser:

### Manhole Characteristics

Location in MH	Mtrl. Code	Infil. Code	Cond. Code	Repair Codes	Comments
Frame/Cover					
Chimney					
Cone					
Wall					
Bench					
Invert/Channel					

### Invert Information

Pipe	Direction	Rim to Invert	Pipe Dia. (in)	Pipe Mtrl. Code	Clock Position*	Comments
Pipe 1						
Pipe 2						
Pipe 3						
Pipe 4						
Pipe 5						

Additional  
Comments





# Town of Stonington, Connecticut

## Manhole Inspection Form

### Manhole Information

Inspector: BM AND JC

Date: 5/6/2022

Weather: DRY (NO PRECIPITATION DURING SURVEY)

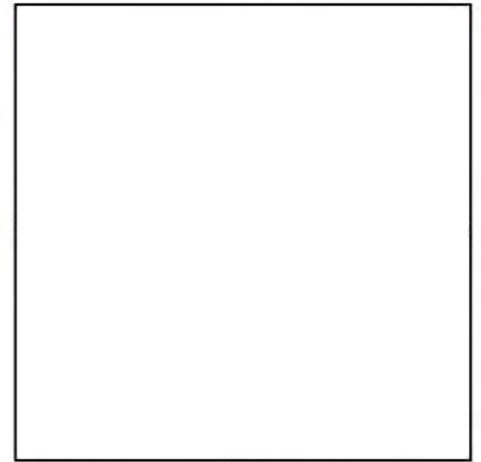
Street: ROUTE 1

GIS MH No: 2-120

Type of Manhole:

Inspection Status: NOT FOUND

### Manhole Location and Configuration



### Inspection Photos





# Town of Stonington, Connecticut

## Manhole Inspection Form

### Manhole Information

Inspector: BM AND JC

Date: 5/6/2022

Weather: DRY (NO PRECIPITATION DURING SURVEY)

Street: ROUTE 1

Location: SIDEWALK

GIS MH No: 2-120

Type of Manhole:

Inspection Status: NOT FOUND

Rim to Invert (ft):

Grade to Rim (in):

### Manhole Infiltration

Surcharge:

Infiltration:

Number of Holes:

Metal Riser:

### Manhole Characteristics

Location in MH	Mtrl. Code	Infil. Code	Cond. Code	Repair Codes	Comments
Frame/Cover					
Chimney					
Cone					
Wall					
Bench					
Invert/Channel					

### Invert Information

Pipe	Direction	Rim to Invert	Pipe Dia. (in)	Pipe Mtrl. Code	Clock Position*	Comments
Pipe 1						
Pipe 2						
Pipe 3						
Pipe 4						
Pipe 5						

Additional  
Comments





CDM  
Smith

## Town of Stonington, Connecticut

### Manhole Inspection Form

#### Manhole Information

Inspector: BM AND JC

Date: 5/6/2022

Weather: DRY (NO PRECIPITATION DURING SURVEY)

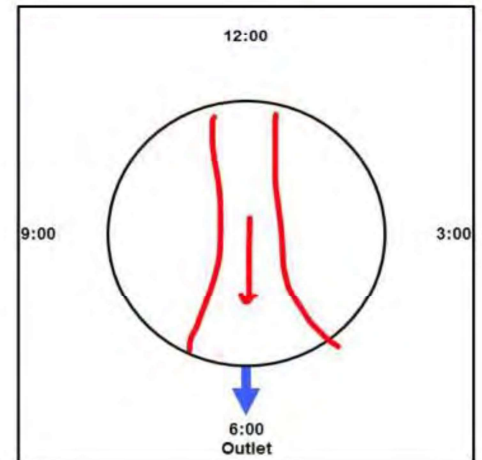
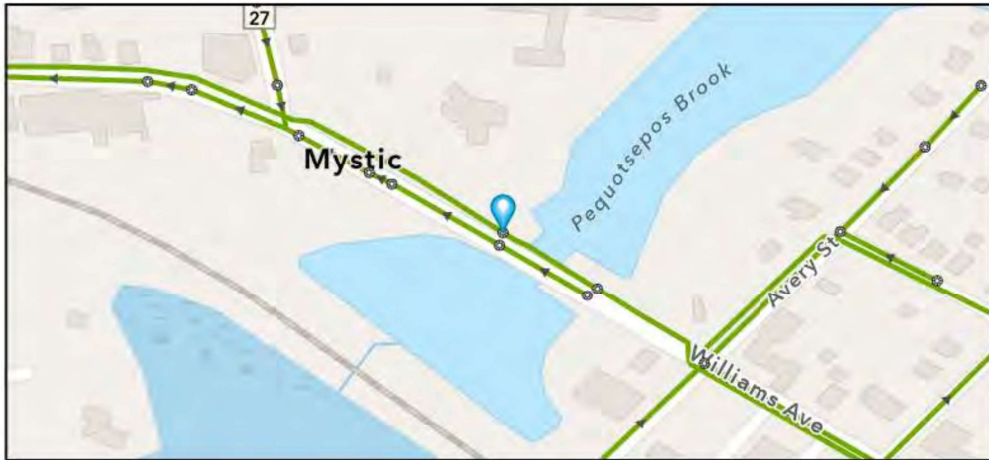
Street: WILLIAMS AVE

GIS MH No: 2-154

Type of Manhole: SANITARY SEWER (GRAVITY)

Inspection Status: SURFACE INSPECTION: LEVEL 1 (NO MANHOLE ENTRY)

#### Manhole Location and Configuration



#### Inspection Photos



**Manhole Inspection Form****Manhole Information****Inspector:** BM AND JC**Date:** 5/6/2022**Weather:** DRY (NO PRECIPITATION DURING SURVEY)**Street:** WILLIAMS AVE**Location:** SIDEWALK**GIS MH No:** 2-154**Type of Manhole:** SANITARY SEWER (GRAVITY)**Inspection Status:** SURFACE INSPECTION; LEVEL 1 (NO MANHOLE ENTRY)**Rim to Invert (ft):** 13**Grade to Rim (in):** 0**Manhole Infiltration****Surcharge:** NO**Number of Holes:** 0**Infiltration:** NO**Metal Riser:** NO**Manhole Characteristics**

Location in MH	Mtrl. Code	Infil. Code	Cond. Code	Repair Codes	Comments
Frame/Cover	CAST IRON	NONE	SOUND	NONE	
Chimney	CONCRETE BLOCK	NONE	SOUND	NONE	
Cone	CONCRETE BLOCK	NONE	SOUND	NONE	
Wall	CONCRETE (CAST IN PLACE)	NONE	SOUND	NONE	
Bench	BRICK	NONE	SOUND	NONE	
Invert/Channel	BRICK	NONE	SOUND	NONE	

**Invert Information**

Pipe	Direction	Rim to Invert	Pipe Dia. (in)	Pipe Mtrl. Code	Clock Position*	Comments
Pipe 1	OUT	13	24	REINFORCED CONCRETE PIPE	06:00	FORCE MAIN
Pipe 2	IN	10	8	REINFORCED CONCRETE PIPE	12:00	GRAVITY?
Pipe 3						
Pipe 4						
Pipe 5						

**Additional  
Comments**





CDM  
Smith

# Town of Stonington, Connecticut

## Manhole Inspection Form

### Manhole Information

Inspector: BM AND JC

Date: 5/6/2022

Weather: DRY (NO PRECIPITATION DURING SURVEY)

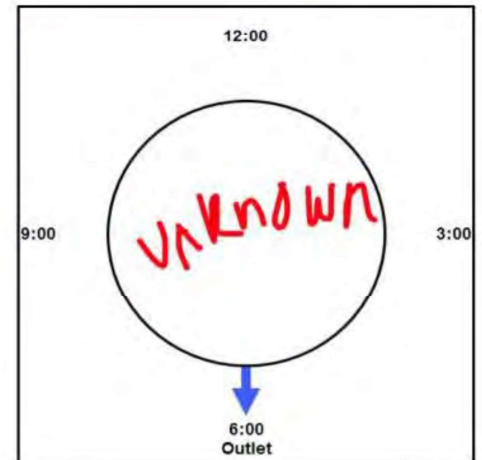
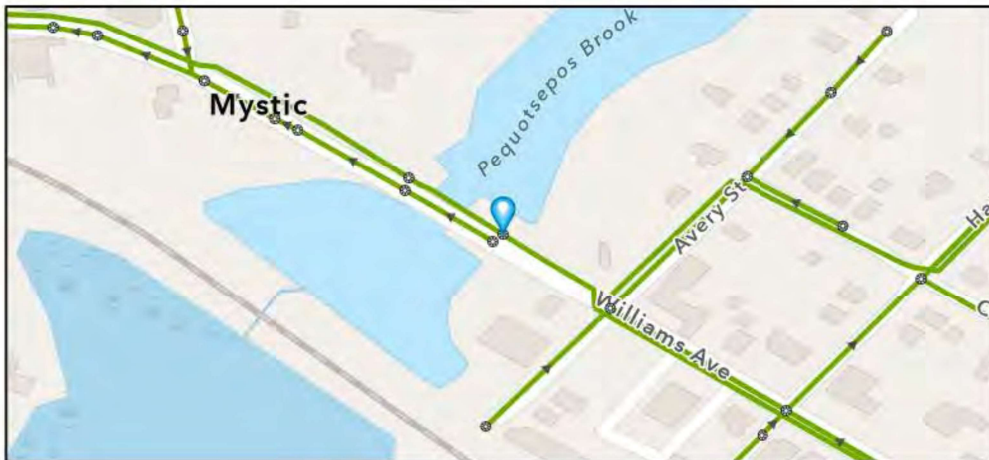
Street: ROUTE 1

GIS MH No: 2-155

Type of Manhole: SANITARY SEWER (GRAVITY)

Inspection Status: SURFACE INSPECTION: LEVEL 1 (NO MANHOLE ENTRY)

### Manhole Location and Configuration



### Inspection Photos





# Town of Stonington, Connecticut

## Manhole Inspection Form

### Manhole Information

Inspector: BM AND JC

Date: 5/6/2022

Weather: DRY (NO PRECIPITATION DURING SURVEY)

Street: ROUTE 1

Location: SIDEWALK

GIS MH No: 2-155

Type of Manhole: SANITARY SEWER (GRAVITY)

Inspection Status: SURFACE INSPECTION: LEVEL 1 (NO MANHOLE ENTRY)

Rim to Invert (ft): 10

Grade to Rim (in): 0

### Manhole Infiltration

Surcharge: YES

Infiltration: NO

Number of Holes: 0

Metal Riser: NO

### Manhole Characteristics

Location in MH	Mtrl. Code	Infil. Code	Cond. Code	Repair Codes	Comments
Frame/Cover	CAST IRON	NONE	SOUND	REPLACE FRAME AND COVER	
Chimney	CONCRETE BLOCK	NONE	SOUND	NONE	
Cone	NOT KNOWN	NONE	NOT KNOWN	NONE	TOO MUCH WATER TO SEE
Wall	NOT KNOWN	NONE	NOT KNOWN	NONE	TOO MUCH WATER TO SEE
Bench	NOT KNOWN	NONE	NOT KNOWN	NONE	TOO MUCH WATER TO SEE
Invert/Channel	NOT KNOWN	NONE	NOT KNOWN	NONE	

### Invert Information

Pipe	Direction	Rim to Invert	Pipe Dia. (in)	Pipe Mtrl. Code	Clock Position*	Comments
Pipe 1						
Pipe 2						
Pipe 3						
Pipe 4						
Pipe 5						

Additional  
Comments